



Bulletin No.: 16-NA-378

Date: Nov-2016

Service Bulletin

TECHNICAL

Subject: Intermittent IPC Gauges Drop Out, Passenger Airbag Indicator "OFF"/Radio/HVAC Displays Blank Out, Airbag Readiness Light On, Service Airbag/Service Theft Deterrent/Service Tire Pressure Monitor Messages Displayed, No Crank No Start - DTCs U0073, U0078, U0140, U0151, U0155, U0164, U0184 Set

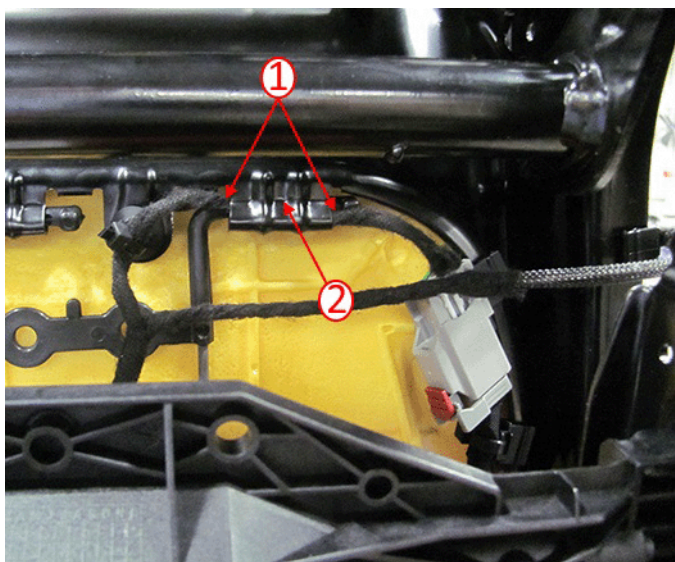
Brand:	Model:	Model Year:		Vehicle Build Date:		Engine:	Transmission:
		from	to	from	to		
Chevrolet	Malibu	2013	2014	SOP	March 14, 2014		

Involved Region or Country	North America and Israel
Alternate RPO	AL0

Condition	<p>Some customers may comment on any of the following conditions:</p> <ul style="list-style-type: none"> • Service Airbag message displayed. • Airbag Readiness light on. • IPC/Cluster gauges drop to the rest position. • Radio display blanks out. • HVAC display blanks out. • Passenger airbag indicator “OFF” with passenger seat occupied. • Service theft deterrent message displayed. • Service tire pressure monitor message displayed. • No crank/no start. <p>The Technician may find:</p> <ul style="list-style-type: none"> • Air bag fuse blown. • DTC Set: <ul style="list-style-type: none"> – U0073 – U0078 – U0140 – U0151 – U0155 – U0164 – U0184
Cause	<p>This condition may be caused by the wiring harness chaffing against the seat frame or a short to ground in the 5060 circuit.</p>

Important: To duplicate this concern, the passenger seat must be occupied.

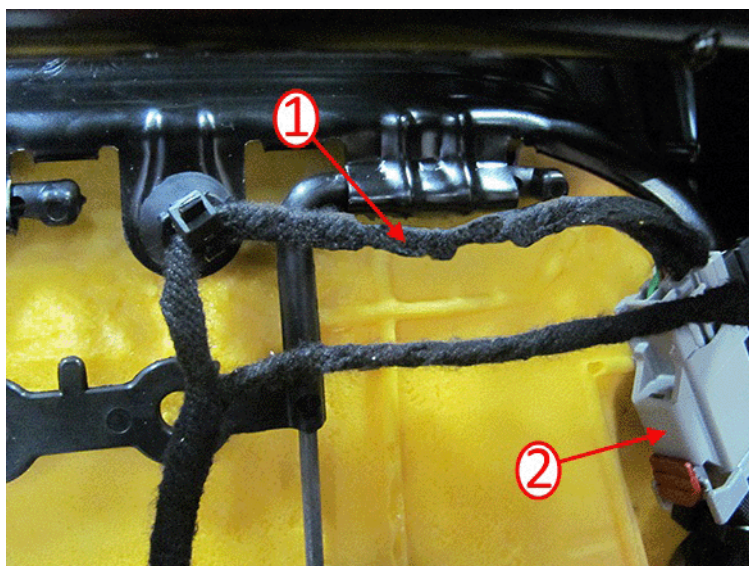
Correction



If the condition has been duplicated, inspect the passenger side seat wiring harness for possible damage (1) and/or improper routing through the seat frame (2).

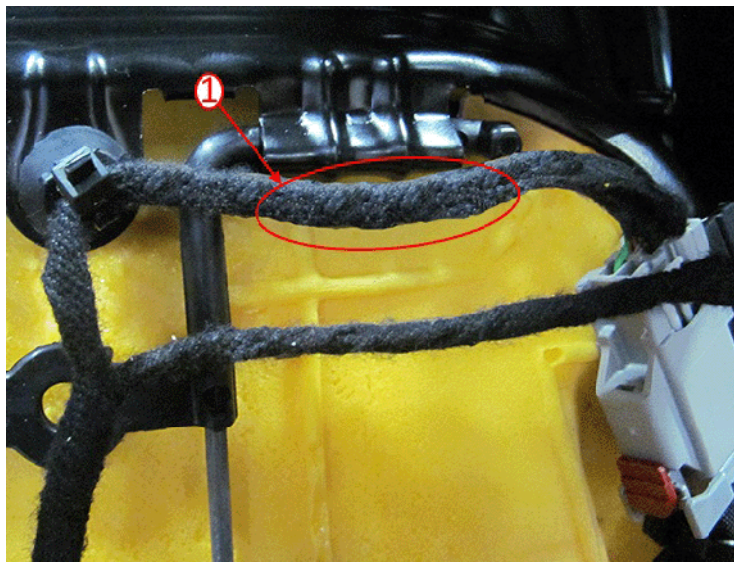
If the harness has been found to be the cause of the concern, proceed with the following procedure.

Service Procedure

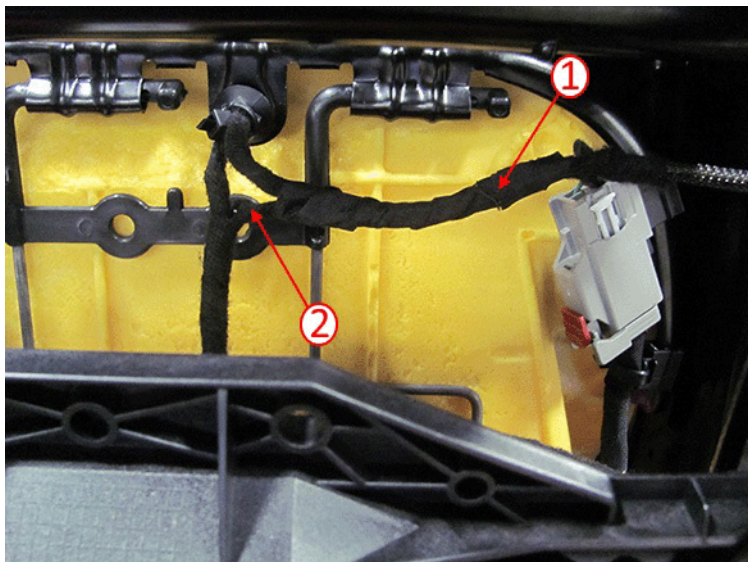


Note: If there is no chaffing or exposed bare copper wire, continue with diagnosis referring to SI.

1. Remove the passenger seat. Refer to *Driver or Passenger Seat Removal and Installation* in SI.
 - If the wiring harness has been found to be routed through the seat frame, re-route the harness away from the frame as shown above.
 - If necessary, disconnect the electrical connector (2).
2. Inspect the passenger seat wiring harness for chaffing or exposed copper wire (1).
3. Repair exposed and/or separated wiring. Refer to *Repairing Damaged Wire Insulation* in SI.



4. Using Woven Polyester Electrical Tape (PET), tape the harness ensuring that the tape is applied in a double layer extending along the harness (1).



5. Secure the passenger seat data wiring harness (1) to the seat wiring harness (2) using the Woven Polyester Electrical Tape (PET).
 - If necessary, connect the electrical connector.
6. Install the passenger side seat.

Note: If no signs of damage has been found to the passenger seat wiring harness, refer to SI for further diagnostic testing.

Warranty Information

For vehicles repaired under warranty, use:

Labor Operation	Description	Labor Time
7080208*	Remove/Install Passenger Seat and Wrap Harness	0.5 hr
*This is a unique Labor Operation for Bulletin use only.		

Version	1
Modified	

GM bulletins are intended for use by professional technicians, NOT a "do-it-yourselfer". They are written to inform these technicians of conditions that may occur on some vehicles, or to provide information that could assist in the proper service of a vehicle. Properly trained technicians have the equipment, tools, safety instructions, and know-how to do a job properly and safely. If a condition is described, DO NOT assume that the bulletin applies to your vehicle, or that your vehicle will have that condition. See your GM dealer for information on whether your vehicle may benefit from the information.



WE SUPPORT VOLUNTARY TECHNICIAN CERTIFICATION