



# Service Bulletin

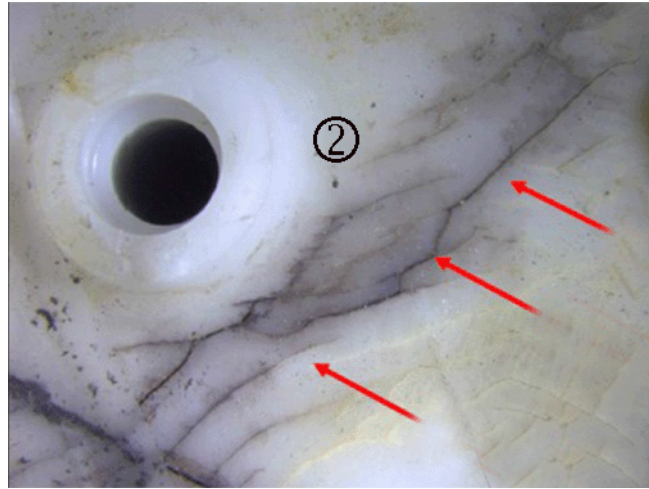
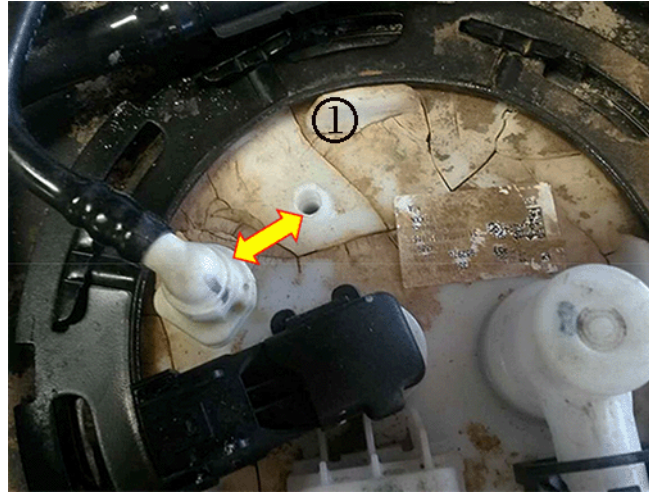
## TECHNICAL

**Subject:** Fuel Odor, Fuel Smell, Fuel Leak, Fuel Weeping from Top of Tank, DTC P0442 May Be Set

| Brand:    | Model:   | Model Year: |      | VIN: |    | Engine: | Transmission: |
|-----------|----------|-------------|------|------|----|---------|---------------|
|           |          | from        | to   | from | to |         |               |
| Chevrolet | Colorado | 2015        | 2017 |      |    | All     | All           |
| GMC       | Canyon   | 2015        | 2017 |      |    |         |               |

|                                   |   |
|-----------------------------------|---|
| <b>Involved Region or Country</b> | NORTH AMERICA, GUAM, MEXICO, PUERTO RICO  |
| <b>Condition</b>                  | Some customers may comment on a fuel odor, fuel leak or fuel weeping from the top of the fuel tank. |

## Cause

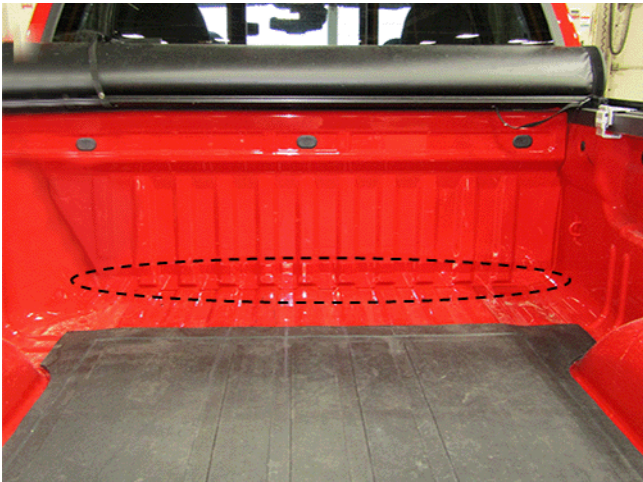


The cause may be sulfuric acid, or other such chemicals, placed in the bed of the truck that has either leaked or been washed through the holes in pickup box, and settled onto the top of the fuel tank. Examples of chemical damage to the fuel pump module such as a fractured port (1) and cracks in the plastic flange (2), are shown in the graphics above.

## Correction

**Note:** Vehicles with a spray-on bed liner can still exhibit the condition because the floor/front panel seam is not fully sealed. Spray-on bed liner vehicles should have a black sealer product applied, while any other vehicles should have clear product applied, regardless of paint color.

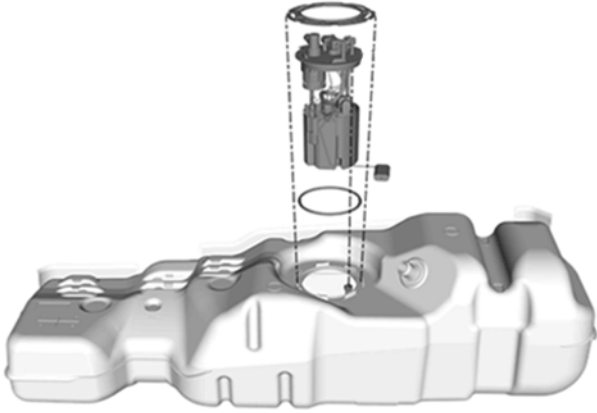
Verify fuel pump damage/failure and follow the Service Procedure below to replace the fuel pump and seal the pickup box.



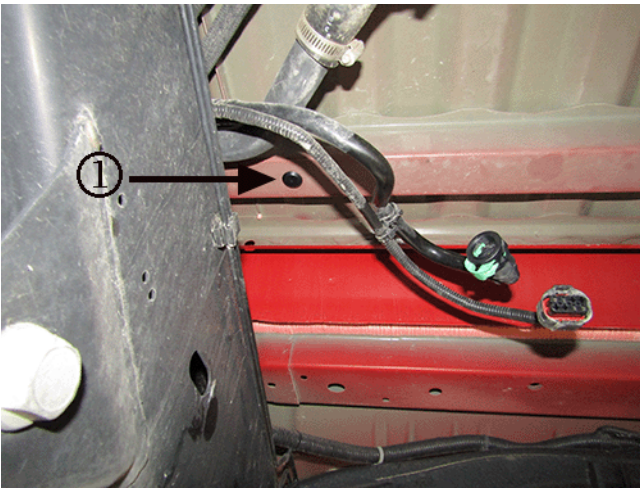
The top side front joint of the pickup bed floor and front panel, shown circled above, is the area that seam sealant will be applied.

## Service Procedure

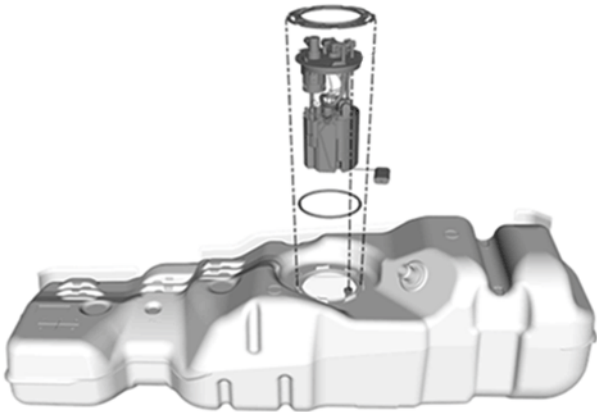
1. Raise and suitably support the vehicle. Refer to *Lifting and Jacking the Vehicle* in SI.



2. Remove the fuel tank fuel pump module. Refer to *Fuel Tank Fuel Pump Module Replacement* in SI.



3. Before reinstalling the fuel tank to the vehicle, install one drain hole plug (1) to the open left side drain hole location shown above.



4. Install the new fuel pump module. Refer to *Fuel Tank Fuel Pump Module Replacement* in SI.
5. Lower the vehicle.
6. Using an air hose, blow out any dirt/debris from the front joint of pickup bed floor and front panel.



7. Use a rag and wax/grease removing solvent such as Acrysol, or equivalent, to remove any dirt, grease, oil or chemical residue from the repair area.

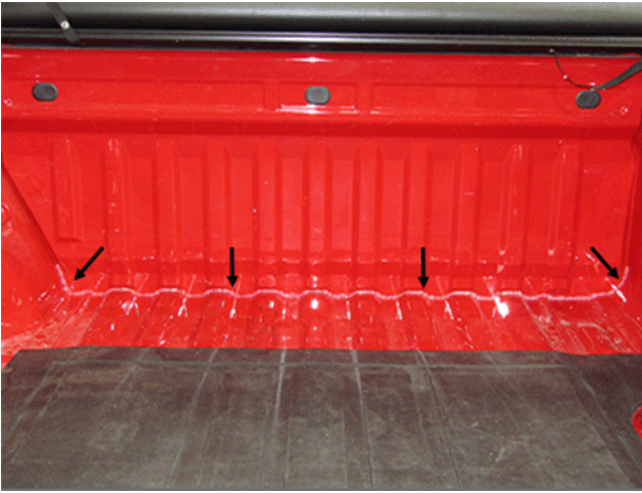
**Note:** Application of the clear seam sealer is shown in the steps below. Application of the black sealer, on a spray-on bed liner, should follow the same process.



**Important:** As shown in the graphic above, ensure the lower corners are fully sealed by applying sealant past the bottom radius and up to the front panel body line.



8. Using an appropriate color seam sealer from the table below, or equivalent, apply a bead of sealant across the complete floor/front panel joint.



9. Ensure the complete front joint is sealed, and allow to dry per manufacturer's recommendation.

## Parts Information

Contact Kent Automotive at 1-888-YES-KENT or online at [www.kent-automotive.com](http://www.kent-automotive.com).

3M® products are available through your local 3M® distributor. Information about 3M® product retailers in your area may be obtained at 1-866-364-3577 or at <http://3mcollision.com/>.

| Description                                   | Vehicle Application | Part Number | Qty |
|---|---------------------|-------------|-----|
| Module, Kit F/Tank F/Pump                     | All                 | 13595810    | 1   |
| PLUG ASM, R/FLR PNL DRN HOLE                  | All                 | 94535715    | 1   |
| *Kent Automotive High-Tech™ Clear Seam Sealer | Painted Box         | P10195      | 1   |
| *3M™ Marine Grade Silicone Sealant Clear      |                     | 08029       |     |
| *Kent DTM High Build (Black)                  | Spray-on Bedliner   | KT 14999    |     |
| *3M™ Heavy Bodied Seam Sealer (Black)         |                     | 08308       |     |

\*We believe this source and their products to be reliable. There may be additional manufacturers of such products/materials. General Motors does not endorse, indicate any preference for, or assume any responsibility for the products or material from this firm or for any such items that may be available from other sources.

## Warranty Information

For vehicles repaired under warranty, use Labor Operation below and include material cost.

| Labor Operation  | Description  | Labor Time |
|--|--|------------|
| 1480678*   | Replace Fuel Pump Module, Seal Front Pickup Box Seam | 1.5 hrs    |
| *This is a unique Labor Operation for Bulletin use only. |  |            |

|         |   |
|---------|---|
| Version | 2 |
|---------|---|

|                 |  |
|-----------------|--|
| <b>Modified</b> | Nov. 17, 2016 – Added DTC and Additional Keyword to Subject and the 2017 Model Year. |
|-----------------|--|

GM bulletins are intended for use by professional technicians, NOT a "do-it-yourselfer". They are written to inform these technicians of conditions that may occur on some vehicles, or to provide information that could assist in the proper service of a vehicle. Properly trained technicians have the equipment, tools, safety instructions, and know-how to do a job properly and safely. If a condition is described, DO NOT assume that the bulletin applies to your vehicle, or that your vehicle will have that condition. See your GM dealer for information on whether your vehicle may benefit from the information.



WE SUPPORT VOLUNTARY TECHNICIAN CERTIFICATION