



Service Bulletin

File in Section: -

Bulletin No.: 16-NA-360

Date: November, 2016

TECHNICAL

Subject: Sharp Edge at Bottom Rear Corner of Front Door Lower Molding

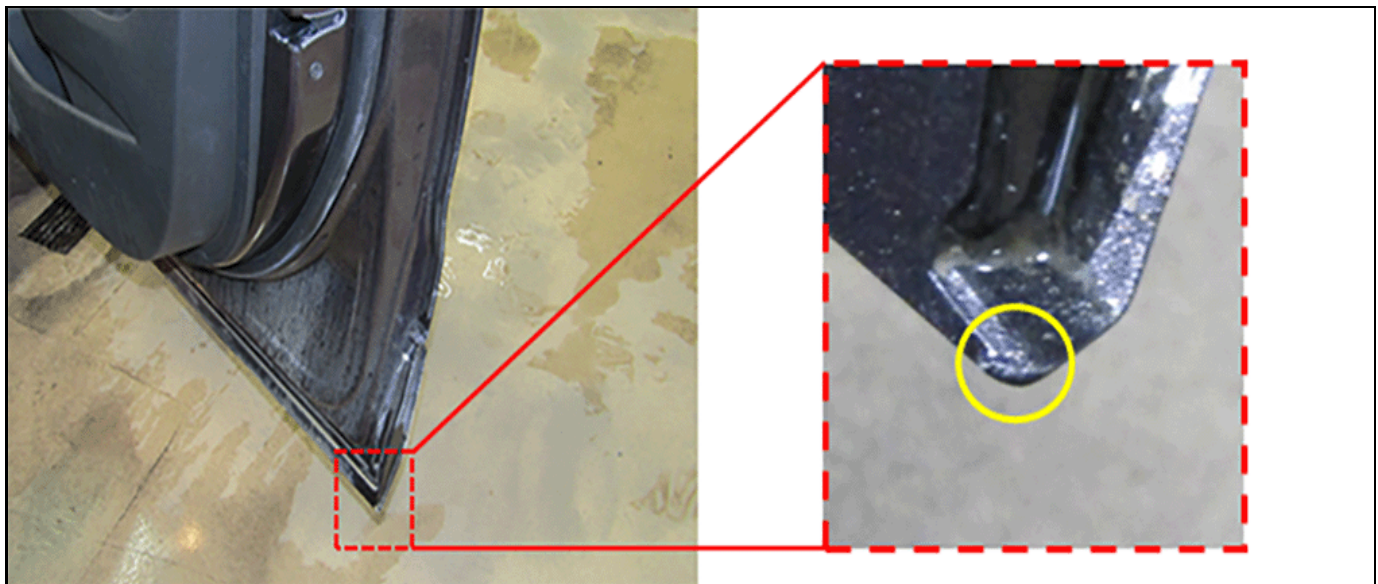
Brand:	Model:	Model Year:		VIN:		Engine:	Transmission:
		from	to	from	to		
Buick	Envision	2016	2017			All	All

Involved Region or Country	North America
Condition	Some customers may comment on finding a sharp edge at bottom rear corner of the driver and/or passenger front door lower molding.
Cause	The cause of the condition may be a flashing or sharp edge being exposed during the molding part production.

Correction

Sand the affected corner(s) to remove the flashing/edge and apply touch-up paint as necessary following the Service Procedure below.

Service Procedure



1. Open the affected front door and locate the flashing/sharp edge.

4604463



4604464

2. Using a DA sander with 400 grit paper, or equivalent, carefully sand off the flashing/edge to a smooth radius.



4604466

4. Apply the appropriate touch-up paint color to the molding corner.
5. Repeat, if necessary, on the opposite front door.

Warranty Information

For vehicles repaired under warranty, use:

Labor Operation	Description	Labor Time
1480738*	Remove Sharp Edge from Corner of Front Door Lower Molding (1 or Both Doors)	0.3 hr
*This is a unique Labor Operation for Bulletin use only.		



4604465

3. Finish sanding by hand, as necessary.

Version	1
Modified	

