



# Service Bulletin

File in Section: -

Bulletin No.: 16-NA-102

Date: November, 2016

## TECHNICAL

**Subject: Duramax Diesel Hard Start, No Start, DTCs P0087, P0088, P0191, P128E or Injection Pump Replacement**

Brand:	Model:	Model Year:		VIN:		Engine:	Transmission:
		from	to	from	to		
Chevrolet	Express, Silverado 2500/3500	2010	2016			Diesel (RPOs LML or LGH)	
GMC	Savana, Sierra 2500/3500						

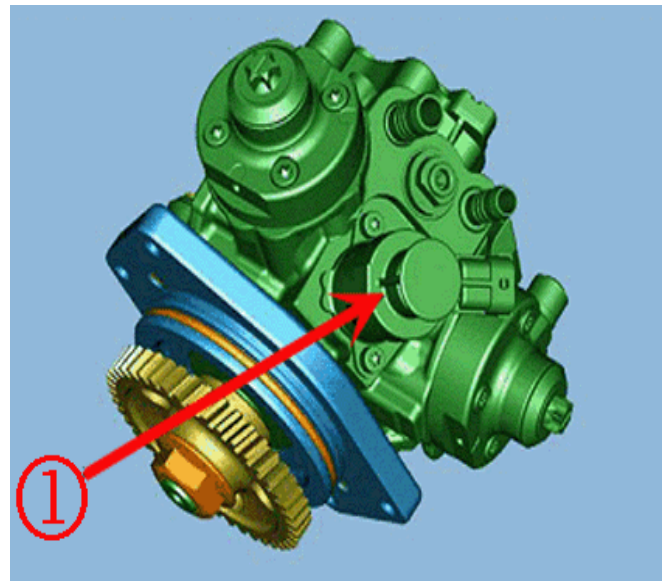
<b>Involved Region or Country</b>	North America, Israel
<b>Condition</b>	A dealer may encounter a customer concern of a hard start or a no start. DTCs P0087, P0088, P0191 or P128E may also be found. Normal SI Diagnostics may be inconclusive or lead to Fuel Injection Pump replacement.

### Service Procedure

Complete the current SI diagnostics for any symptoms or DTCs found.

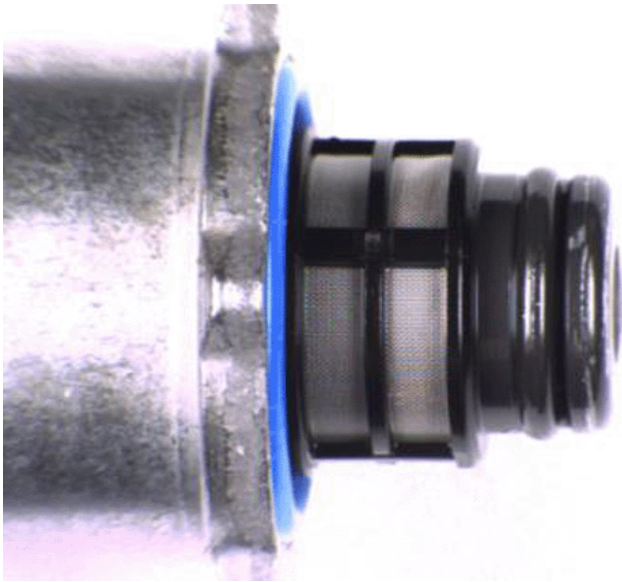
If the current SI diagnostic has led to Fuel Injection Pump replacement, Fuel Pressure Regulator 1 must be inspected for magnetic metal debris.

**Note:** Clean the area around Pressure Regulator 1 before removal. It is possible that road debris could find its way into the regulator port when it is removed. A small piece of dirt on Pressure Regulator 1 does not qualify for the fuel system repairs recommended in this Bulletin.

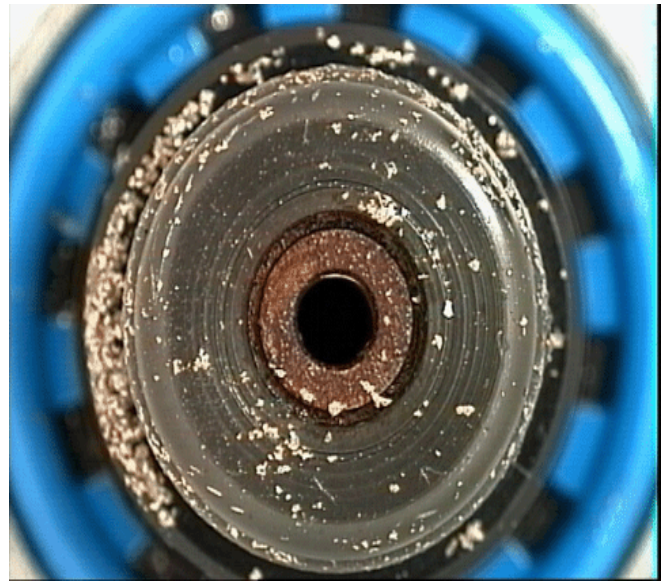


2698603

Remove the Fuel Injection Pump / Pressure Regulator 1 for inspection.



3541158



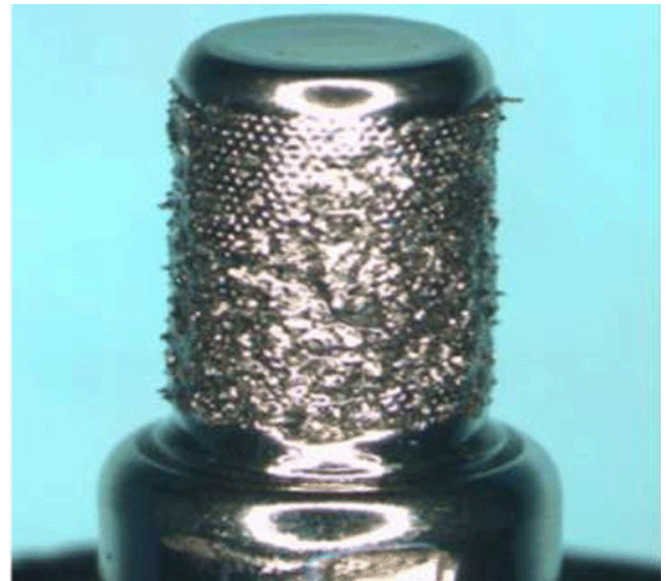
3541165

If Pressure Regulator 1 has no debris on the screen, complete the SI repair procedure and replace the Fuel Injection Pump.

If there is a questionable amount of magnetic debris found on Pressure Regulator 1, remove the Fuel Rail Pressure Sensor and/or Fuel Pressure Regulator 2 (Pressure Relief Valve) for inspection.



3541164



3541168



12639000	HOSE ASM-FUEL RTN	1	X	X	X	X	X	X	X	X	X	X	X	X	X	X	X
12661071	INJECTOR ASM-INDIRECT FUEL	1	X	X	X	X	X	X	X	X	X	X	X	X	X	X	X
12656313	PIPE ASM-FUEL FEED	1	X	X	X	X	X	X	X	X	X	X	X	X	X	X	X
94011618	SEAL_COLD START FUEL FEED VLV (O RING)	1	X	X	X	X	X	X	X	X	X	X	X	X	X	X	X
12625100	SEAL_COLD START FUEL FEED VLV (O RING)	1	X	X	X	X	X	X	X	X	X	X	X	X	X	X	X
94036238	SEAL_OIL LVL IND TUBE (O RING)	1	X	X	X	X	X	X	X	X	X	X	X	X	X	X	X
94011603	SEAL_THERM BYPASS PIPE (O RING)	1	X	X	X	X	X	X	X	X	X	X	X	X	X	X	X
12670466	PIPE ASM-FUEL HIGH PRESS	1	X	X	X	X	X	X	X	X	X	X	X	X	X	X	X
12641590	SWITCH ASM_ENG FUEL VAC	1	X		X	X	X	X	X	X	X	X	X	X	X	X	X
12631851	SEAL-TURBO AIR INL ADAP	1	X	X	X	X	X	X	X	X	X	X	X	X	X	X	X
97224993	SENSOR ASM_FUEL TEMP	1	X						X		X	X	X	X	X	X	X
12676436	SENSOR ASM-WAT IN FUEL IND	1										X	X	X	X	X	X
98065521	GASKET-EGR VLV CLR	1	X	X	X	X	X	X	X	X							
12644913	BRACKET ASM-FUEL FEED PIPE CLIP	1	X	X	X	X	X	X	X	X							
12624346	TUBE-FUEL PRESS REG VAC	1	X	X	X	X	X	X	X	X							
12636270	HOSE-FUEL FEED (ON RH PUMP INLET)	1	X	X	X	X	X	X	X	X							
12636274	HOSE-FUEL FLTR (ON FILTER OUTLET)	1	X	X	X	X	X	X	X	X							
12636275	HOSE-FUEL PRESS REG VAC (PIPE TO SERVICE FIT)	1	X	X	X	X	X	X	X	X							
12646725	MANIFOLD ASM-F/INJN FUEL FEED	1	X	X	X	X	X	X	X	X							
12639779	PIPE ASM-FUEL FEED (FILTER OUT TO PUMP INLET)	1	X	X	X	X	X	X	X	X							
12670460	PIPE ASM-FUEL HIGH PRESS (CYL 2 & 7)	2	X	X	X	X	X	X	X	X							
12670468	PIPE ASM-FUEL HIGH PRESS (CYL 1 & 8)	2	X	X	X	X	X	X	X	X							
12670469	PIPE ASM-FUEL HIGH PRESS (CYL 3 & 6)	2	X	X	X	X	X	X	X	X							
12670471	PIPE ASM-FUEL HIGH PRESS (CYL 4 & 5)	2	X	X	X	X	X	X	X	X							
12670474	PIPE ASM-FUEL HIGH PRESS (LEFT SIDE OF PUMP)	1	X	X	X	X	X	X	X	X							
12670475	PIPE ASM-FUEL HIGH PRESS (RIGHT SIDE OF PUMP)	1	X	X	X	X	X	X	X	X							
12629458	SEAL-TURBO AIR INL ADAP	1	X	X	X	X	X	X	X	X							
12627913	SEAL-UPR INT MANIF	1	X	X	X	X	X	X	X	X							

12645582	HOSE ASM-FUEL RTN (LEFT RAIL TO FEED PIPE)	1		X	X	X	X	X		X							
98065519	GASKET-EGR MANIF	1	X	X	X	X	X	X									
98065523	GASKET-EGR PIPE	1	X	X	X	X	X	X									
98065520	GASKET-EGR VLV CLR	1	X	X	X	X	X	X									
12672028	PUMP KIT-FUEL (CONTAINS FUEL PUMP, INJECTORS & RAILS)	1	X	X	X	X	X	X									
98070023	GASKET-EGR VLV CLR	1						X	X		X	X	X	X	X	X	X
12672027	PUMP KIT-FUEL (CONTAINS FUEL PUMP, INJECTORS & RAILS)	1							X	X	X	X	X	X	X	X	X
12636266	HOSE-FUEL RTN	1									X	X	X	X	X	X	X
12641356	PIPE ASM-FUEL FEED	1									X	X	X	X	X	X	X
12670457	PIPE ASM-FUEL HIGH PRESS (CYL 6)	1									X	X	X	X	X	X	X
12670463	PIPE ASM-FUEL HIGH PRESS (CYL 7)	1									X	X	X	X	X	X	X
12670456	PIPE ASM-FUEL HIGH PRESS (CYL 8)	1									X	X	X	X	X	X	X
12670454	PIPE ASM-FUEL HIGH PRESS	1									X	X	X	X	X	X	X
12670465	PIPE ASM-FUEL HIGH PRESS (CYL 1)	1									X	X	X	X	X	X	X
12670460	PIPE ASM-FUEL HIGH PRESS (CYL 2)	1									X	X	X	X	X	X	X
12670464	PIPE ASM-FUEL HIGH PRESS (CYL 3)	1									X	X	X	X	X	X	X
12670459	PIPE ASM-FUEL HIGH PRESS (CYL 4 OR 5)	2									X	X	X	X	X	X	X
12670453	PIPE ASM-FUEL HIGH PRESS	1									X	X	X	X	X	X	X
12639101	PIPE ASM-FUEL RTN	1									X	X	X	X	X	X	X
26020642	SEAL P/S PUMP RSVR (O RING)	1									X	X	X	X	X	X	X
97368325	GASKET-CTR INT MANIF	1									X	X	X	X	X	X	X

**Warranty Information**

For vehicles repaired under the Powertrain coverage, use the following labor operation. Reference the Applicable Warranties section of Investigate Vehicle History (IVH) for coverage information.

Labor Operation	Description	Labor Time
4080558*	Diagnose and Clean/Repair Complete Fuel System	2010-2016 G Van 21.0 Hours* 2011-2014 C Truck (2WD) 18.0 Hours* 2011-2014 K Truck (4WD) 20.0 Hours* 2015-2016 C and K Truck (2WD and 4WD) 21 Hours*
*This is a unique Labor Operation for bulletin use only.		

<b>Version</b>	4
<b>Modified</b>	April 11, 2016 – Updating the Qty. column of the Parts Information table. April 29, 2016 – Updating the Parts Information table. Oct. 26, 2016 – Updating the Parts Information table.

