



DLB Expired on February 28, 2016

**TECHNICAL INSTRUCTIONS
FOR
PRODUCT UPDATE DLB
INTERNAL TRUNK RELEASE LEVER (HANDLE)**

CERTAIN

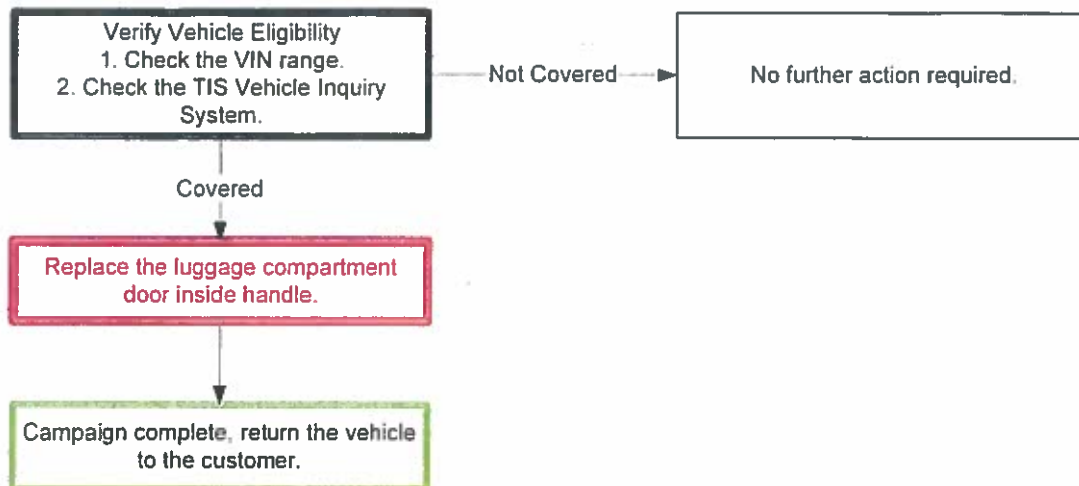
2006 – EARLY 2013 MODEL YEAR IS250, IS350, ISF

2007 – EARLY 2013 MODEL YEAR ES350, ES300h

2013 MODEL YEAR GS350, GS450h

DLB Expired on February 28, 2016

I. OPERATION FLOW CHART



II. PREPARATION

A. PARTS

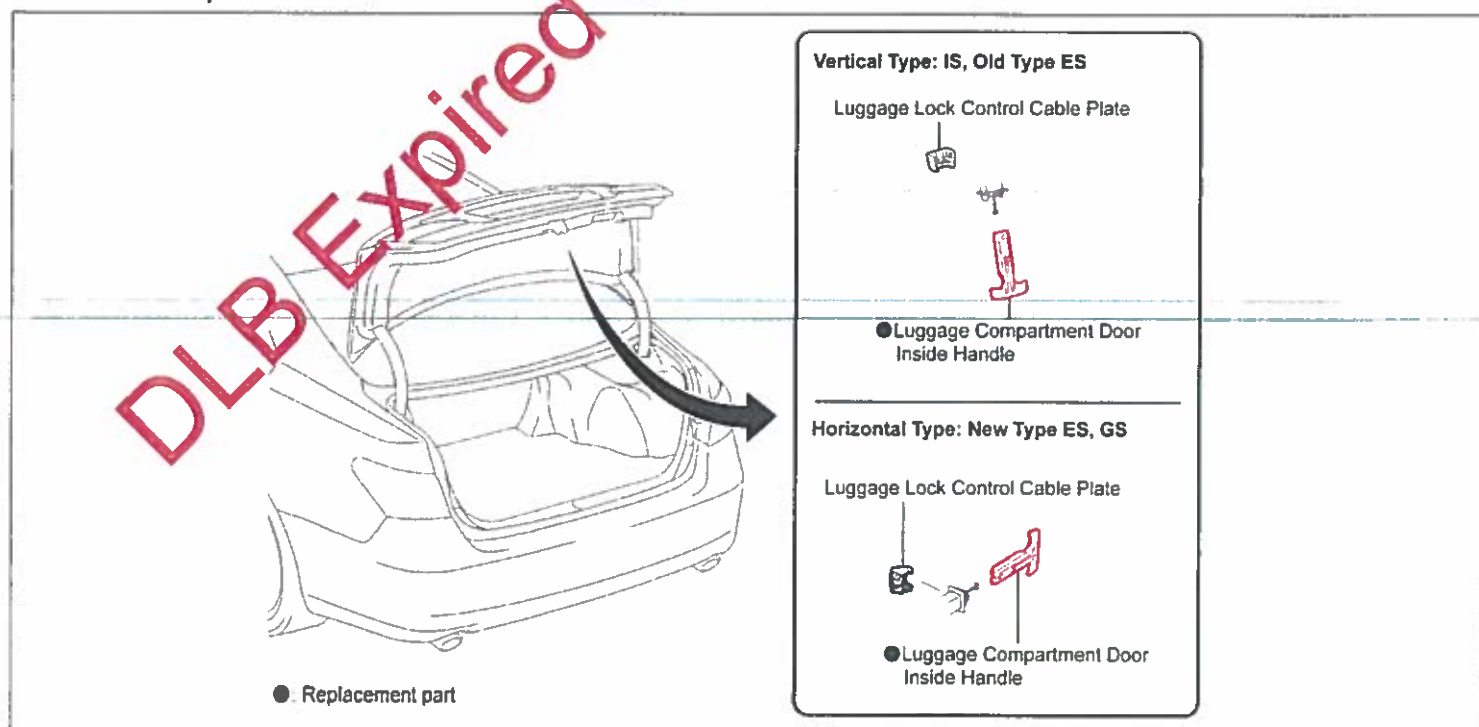
Part Number	Part Description	Quantity
04002-81153	Back Door Inside Handle Kit*	1
*The kit above includes the following part.		
-	Back Door Inside Handle	1

B. TOOLS & EQUIPMENT

- Standard hand tools

III. BACKGROUND

The vehicles covered by this Product Update are equipped with an internal trunk release lever (handle) located inside of the trunk compartment. The handle makes it possible for a person trapped inside the trunk to escape from the compartment. If the handle is not pulled in the direction indicated* on the lever, the lever may break and not open the trunk.



IV. IDENTIFICATION OF AFFECTED VEHICLES

A. COVERED VIN RANGE

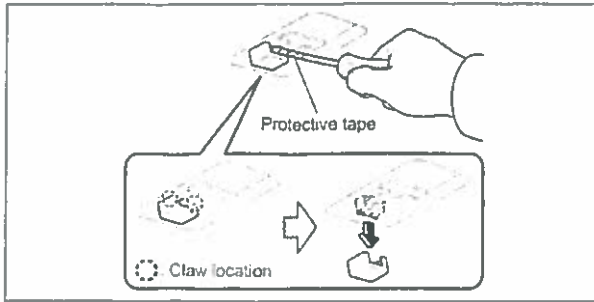
Model	WMI	Year	VIN Range	
			VDS	Range
ES 300H	JTH	2013	BW1GG	2000142-2014201
ES 350	JTH	2007	BJ46G	2000122-2154865
		2008	BJ46G	2152373-2274244
		2009	BJ46G	2272246-2342372
		2010	BK1EG	2341225-2414572
		2011	BK1EG	2413336-2472840
		2012	BK1EG	2471873-2513315
GS 350	JTH	2013	BE1BL	5000150-5019003
			CE1BL	5000125-5013887
GS 450H	JTH	2013	BS1BL	5000157-5005497
IS 250	JTH	2006	BK262	2000010-2021611
				5000018-5025772
		2007	BK262	2021159-2058542
				5025773-5050845
		2008	BK262	2057792-2082748
				5050849-5086447
		2009	BK262	2082750-2094284
				5086448-5107246
		2010	BF5C2	2094264-2100284
				5107249-5129060
		2011	BF5C2	2100134-2101920
				5129064-5156853
		2012	BF5C2	2101792-2103133
				5156194-5184999
IS 250 AWD	JTH	2006	CK262	2103127-2103181
				5184062-5185632
		2007	CK262	5185633-5186675
				5000002-2008075
		2008	CK262	5000013-5007508
				2008542-2019897
		2009	CK262	5007903-5015612
				2019897-2027723
		2010	CF5C2	5015613-5027611
				2027724-2032532
		2011	CF5C2	5027612-5036006
				2032533-2034898
		2012	CF5C2	5036007-5044700
				2034899-2035500
IS 350	JTH	2013	BP262	5044623-5052754
				2035323-2036050
				5052402-5060750
IS F	JTH	2013	BP5C2	2036051-2036071
				5060507-5062515

Model	WMI	Year	VIN Range	
			VDS	Range
IS 350	JTH	2006	BE262	2000000-2007084
				5000018-5011869
		2007	BE262	2006942-2013016
				5011408-5017246
		2008	BE262	2013017-2016302
				5017247-5021818
		2009	BE262	2016303-2017388
				5017389-5023468
		2010	BE5C2	2017389-2017712
				5023469-5025230
		2011	CE5C2	5015210-5028448
				5000105-5002049
IS F	JTH	2012	BE5C2	5028291-5031233
				5002050-5003020
		2013	CE5C2	5031180-5031615
				5003012-5003167
		2008	BP262	5000156-5004828
				5004658-5006738
		2009	BP262	5006743-5008082
				5008080-5009726
		2010	BP5C2	5009692-5010859
				5010828-5011046

NOTE:

- Check the TIS Vehicle Inquiry System to confirm the VIN is involved in this Product Update, and that the campaign has not already been completed prior to dealer shipment or by another dealer.
- TIS warranty will not reimburse dealers for repairs conducted on vehicles that are not affected or were completed by another dealer.

V. WORK PROCEDURE

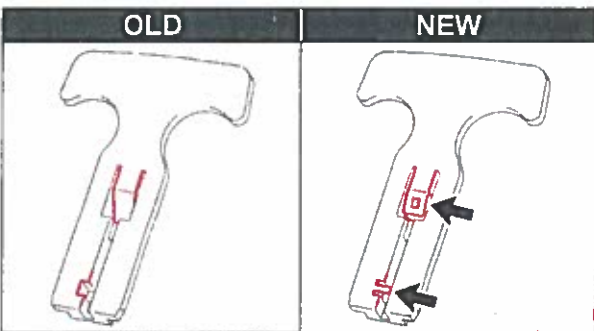


1. REMOVE THE LUGGAGE LOCK CONTROL CABLE PLATE
 - a) Disengage the 2 claws and remove the cable plate using a flat head screwdriver wrapped with protective tape.

NOTE: Disengage the cable plate claws on both sides to prevent it from getting damaged.

2. REMOVE THE LUGGAGE COMPARTMENT DOOR INSIDE HANDLE

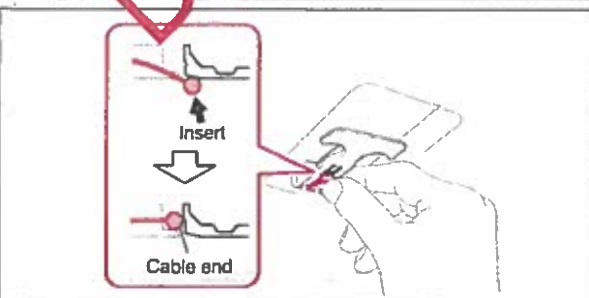
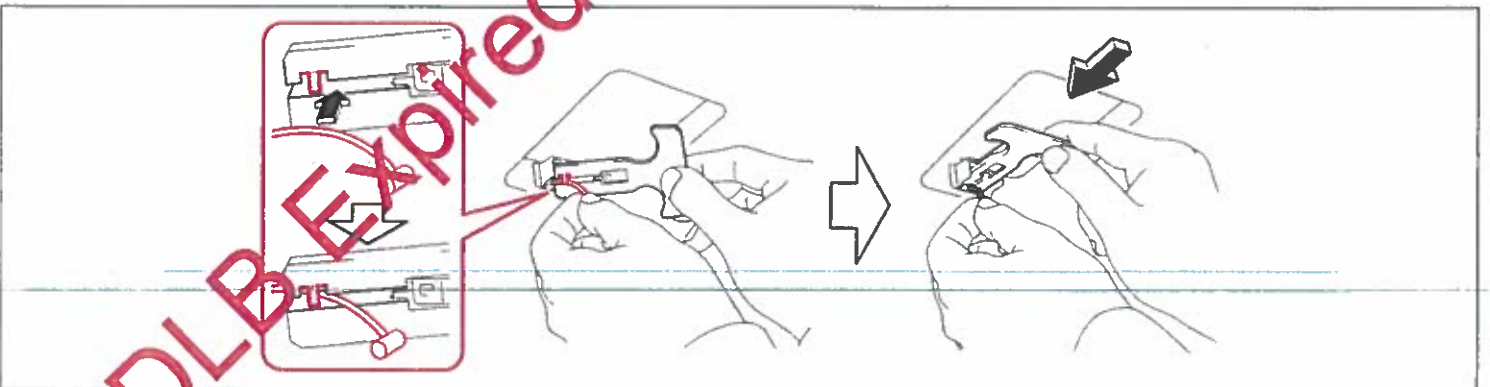
- a) Pull out the inside handle and disengage the cable by turning the handle downward towards the vehicle.



3. INSTALL THE NEW LUGGAGE COMPARTMENT DOOR INSIDE HANDLE

- a) Confirm the shape of the **NEW** inside handle being installed.

- b) Pass the cable through the handle as shown and insert the handle.



- c) Insert the cable end into the inside handle as shown in the figure.



○: Claw locations

4. REINSTALL THE LUGGAGE LOCK CONTROL CABLE PLATE

- Engage the 2 claws to reinstall the cable plate.

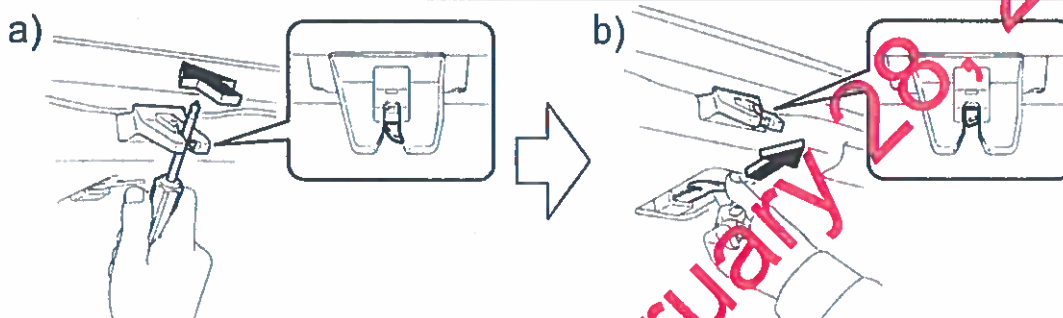
5. CHECK THE LUGGAGE COMPARTMENT DOOR INSIDE HANDLE FUNCTIONALITY

- Put the door latch into the locked position using a screwdriver.
- Pull the inside handle to confirm that the latch unlocks.

NOTE: Be careful not to damage the lock or surrounding painted surfaces.

6. CONFIRM THE LATCH IS IN THE UNLOCKED POSITION BEFORE CLOSING THE TRUNK

NOTE: The latch and/or striker can be damaged if the latch is in the incorrect position when closing the trunk.



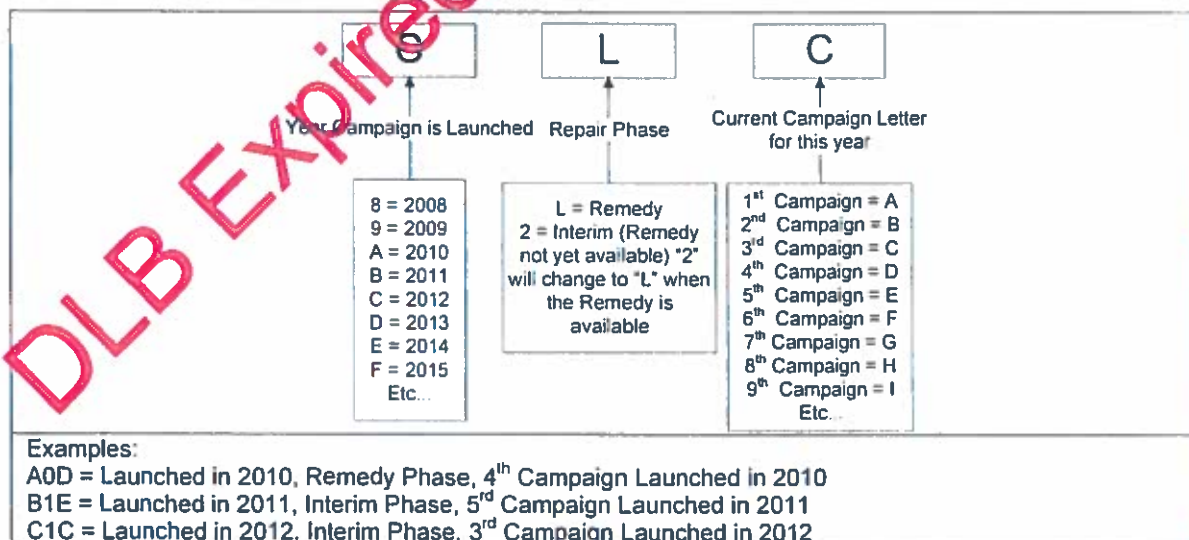
◀ VERIFY REPAIR QUALITY ▶

- Be careful not to damage the cable plate during removal and installation
- Confirm the operation on the newly installed handle
- Confirm the trunk latch is in the unlocked position prior to attempting to close the trunk

If you have any questions regarding this update, please contact your regional representative.

VI. APPENDIX

A. CAMPAIGN DESIGNATION DECODER



B. CAMPAIGN PARTS DISPOSAL

As required by Federal Regulations, please make sure all campaign parts (original parts) removed from the vehicle are disposed of in a manner in which they will not be reused, *unless requested for parts recovery return.*