


# Load Configuration Data

**Service Category** Engine/Hybrid System

**Section** Engine Control

**Market** USA

Scion Supports  
ASE Certification 

## Applicability

YEAR(S)	MODEL(S)	ADDITIONAL INFORMATION
2016	iA	

## Introduction

This bulletin details the procedure for loading configuration data (also known as as-built data) in the ECUs of the Scion iA. When replacing one of the ECUs listed below, you must load configuration data into the ECU. It is NOT recommended to swap ECU's between vehicles.

- PCM (Engine ECU)
- TCM (Transmission ECU)
- IC (Instrument Cluster or Combination Meter ECU)
- SSU (Smart Key ECU)
- RCM (Restraint Control Module/Airbag ECU)

There are 2 different ways to load configuration data into a new ECU:

- You can save the data from the old ECU to load into the new ECU. This method is used when an ECU requires replacement, however you can still communicate with the ECU and read the existing As-built Data. This is the preferred method and should be attempted first, as it will ensure that the current ECU calibration is reinstalled on the ECU after repair (for TCM and PCM). Downloading the calibration from the server in the step below will load the original calibration as it was built from the factory (for TCM and PCM).

Follow steps 1 – 8 for instructions on how to save the data. Once at step 8, start over at step 1 after replacing the ECU to load the data. You can download the data from the server. Follow ALL the steps in the repair procedure to load data from the server into the ECU.

- You can download the data from the server. This method is used when you can no longer communicate with the ECU, or the RM has instructed you to re-load As-built data without replacing the ECU.

Follow ALL the steps in the repair procedure to load data from the server into the ECU.

# Load Configuration Data

## Warranty Information

OP CODE	DESCRIPTION	TIME	OFF	T1	T2
N/A	Not Applicable to Warranty	-	-	-	-

## Required Tools & Equipment

REQUIRED EQUIPMENT	SUPPLIER	PART NUMBER	QTY
Techstream 2.0*	ADE	TS2UNIT	1
Techstream Lite		TSLITEPDLR01	
Techstream Lite (Green Cable)		TSLP2DLR01	

\* Essential SST.

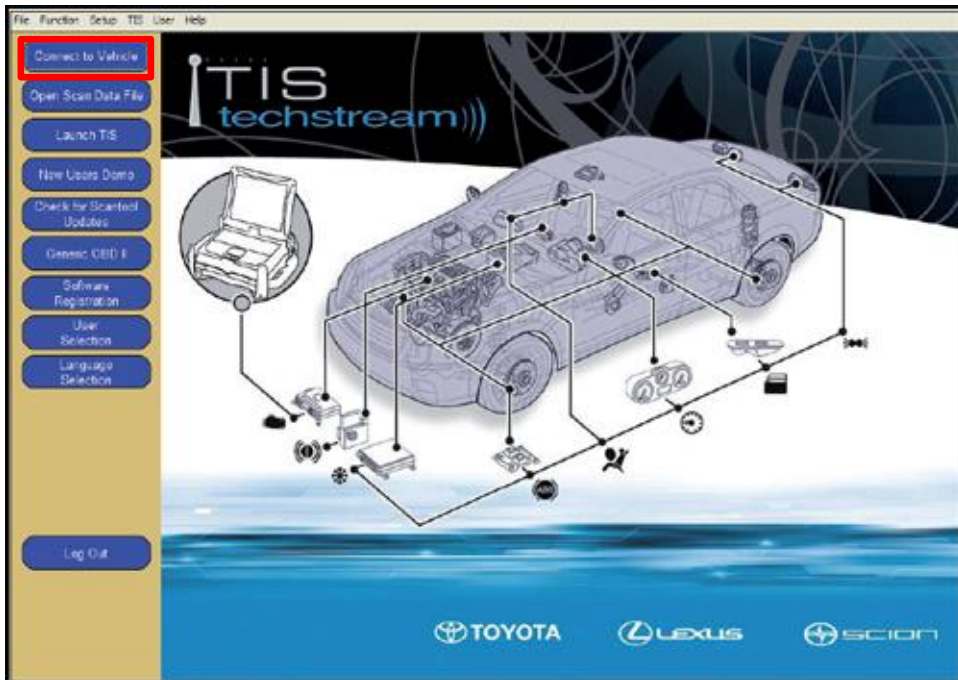
**NOTE**

- Only ONE of the Techstream units listed above is required.
- Software version 11.00.017 or later is required.
- Additional Techstream units may be ordered by calling Approved Dealer Equipment (ADE) at 1-800-368-6787.

## Repair Procedure

1. Connect Techstream to the vehicle.

Figure 1.

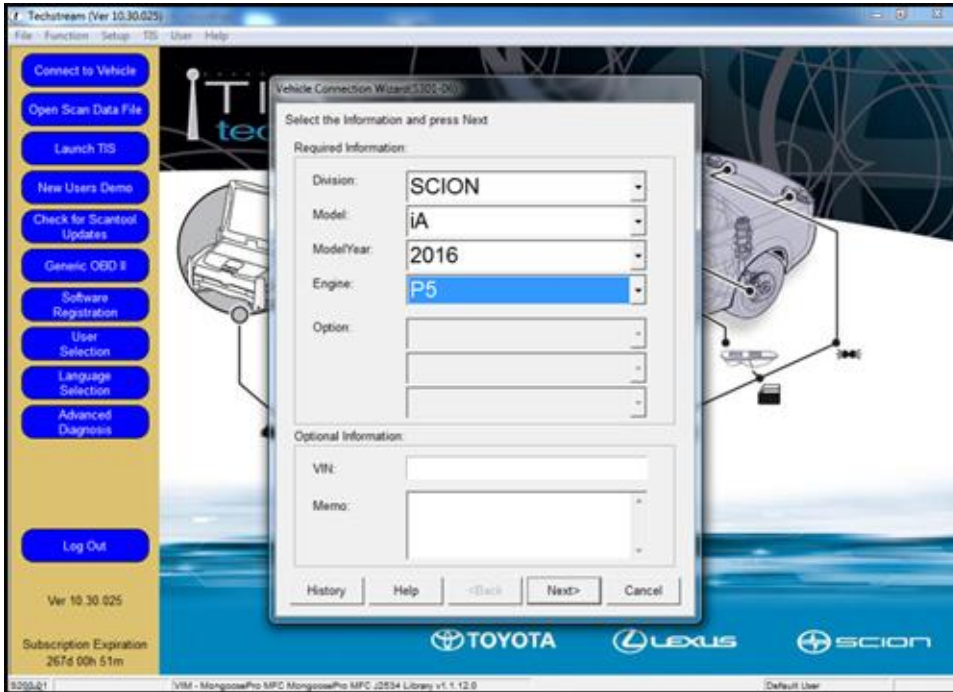


## Load Configuration Data

### Repair Procedure (Continued)

2. Select the correct Division > Model > Model Year.

Figure 2.

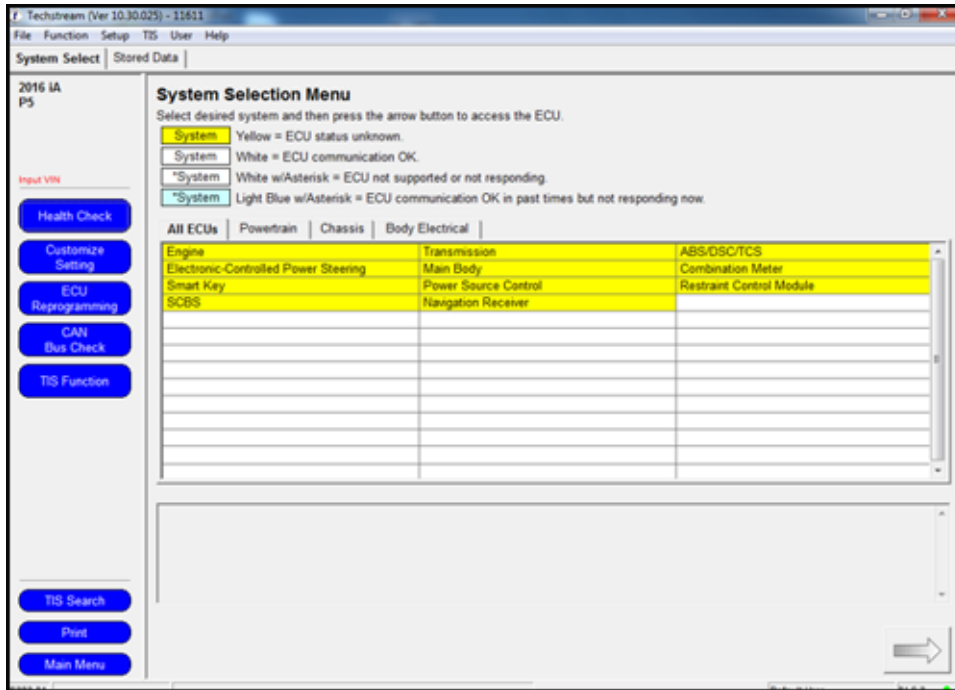


# Load Configuration Data

## Repair Procedure (Continued)

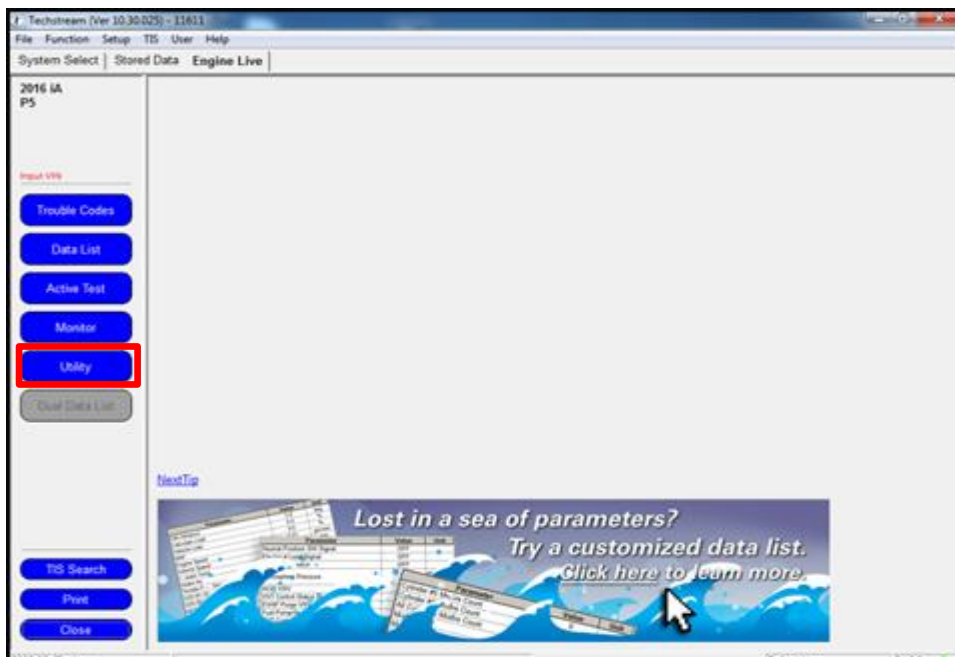
3. Select the ECU of the system you are loading configuration data for.

Figure 3.



4. Select *Utility*.

Figure 4.

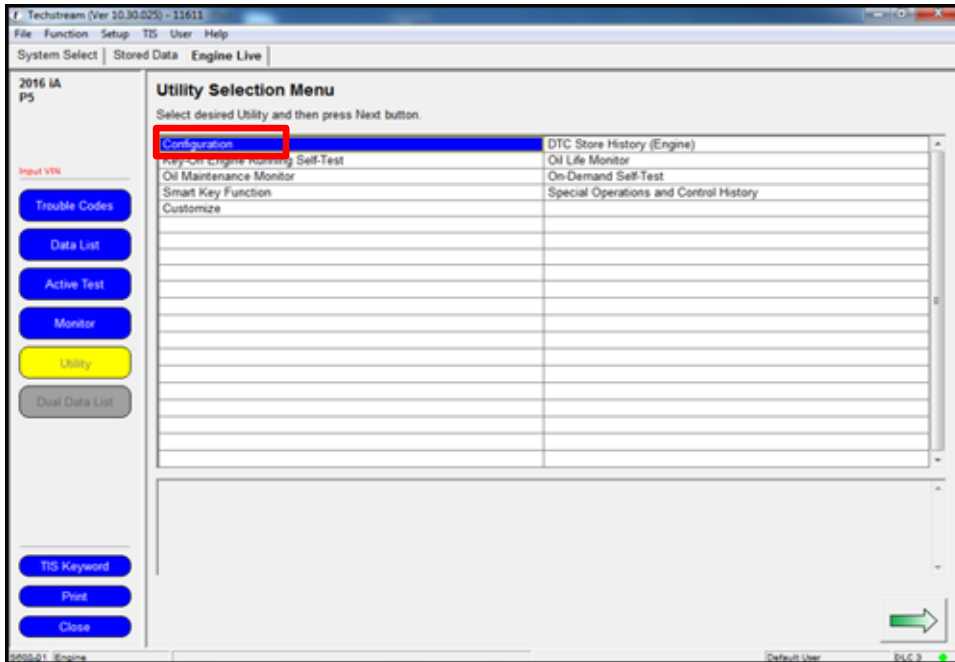


# Load Configuration Data

## Repair Procedure (Continued)

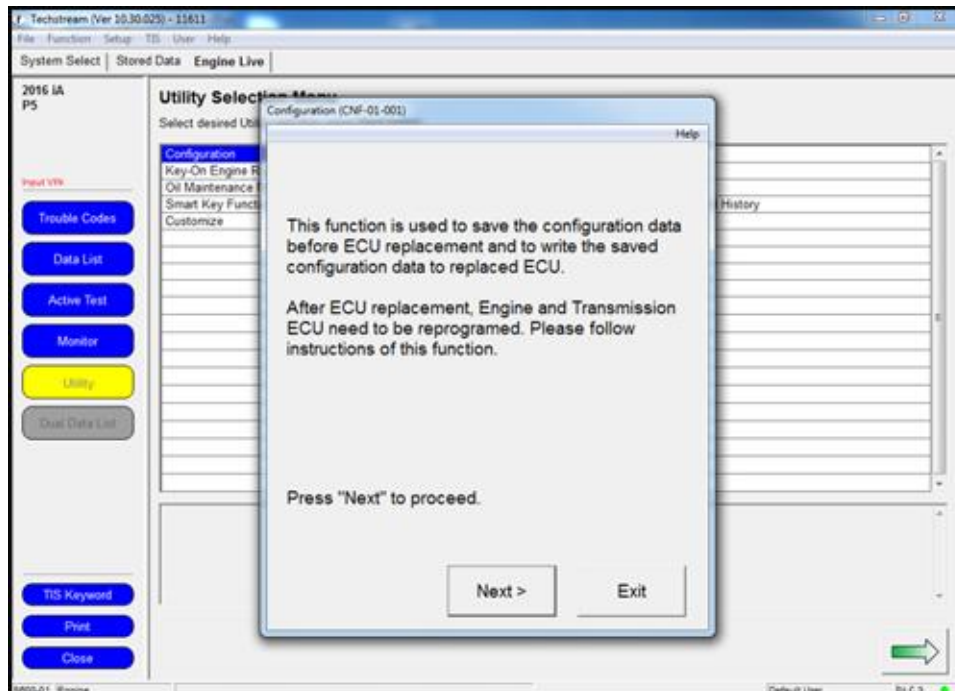
5. Select *Configuration*.

**Figure 5.**



6. Follow the prompts on the Utility screens.

**Figure 6.**



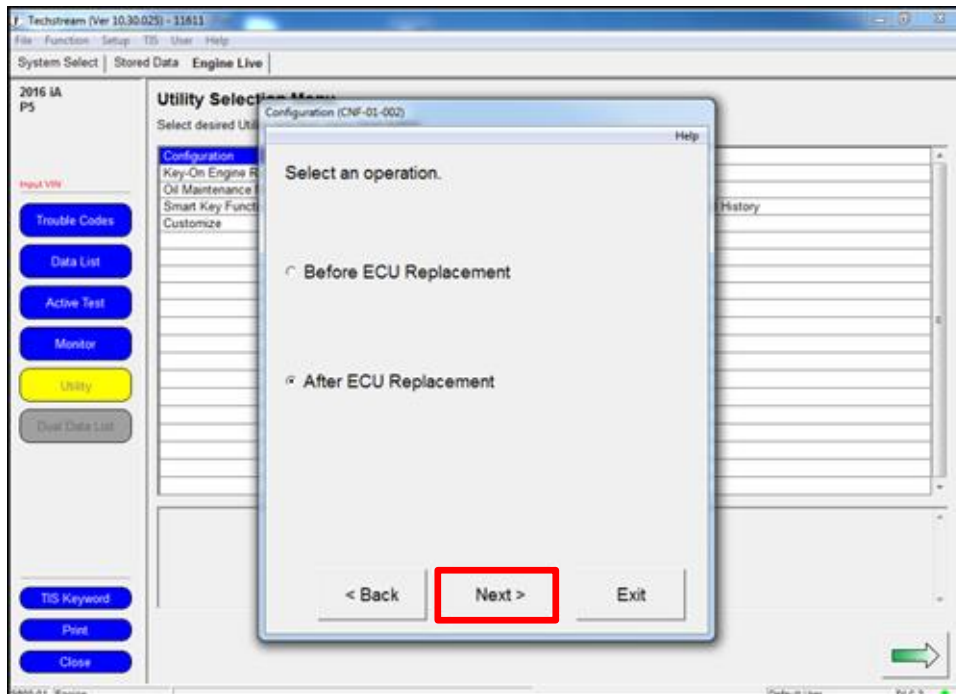
## Load Configuration Data

### Repair Procedure (Continued)

7. If you are saving the current configuration data to load into a new ECU, select "Before ECU Replacement" and select "Next". This will save the data currently on the ECU.

If you have installed the NEW blank ECU and have either saved the old data OR want to download the data from the server, OR the RM has instructed you to load configuration data on an old ECU, select "After ECU Replacement" and select "Next."

**Figure 7.**

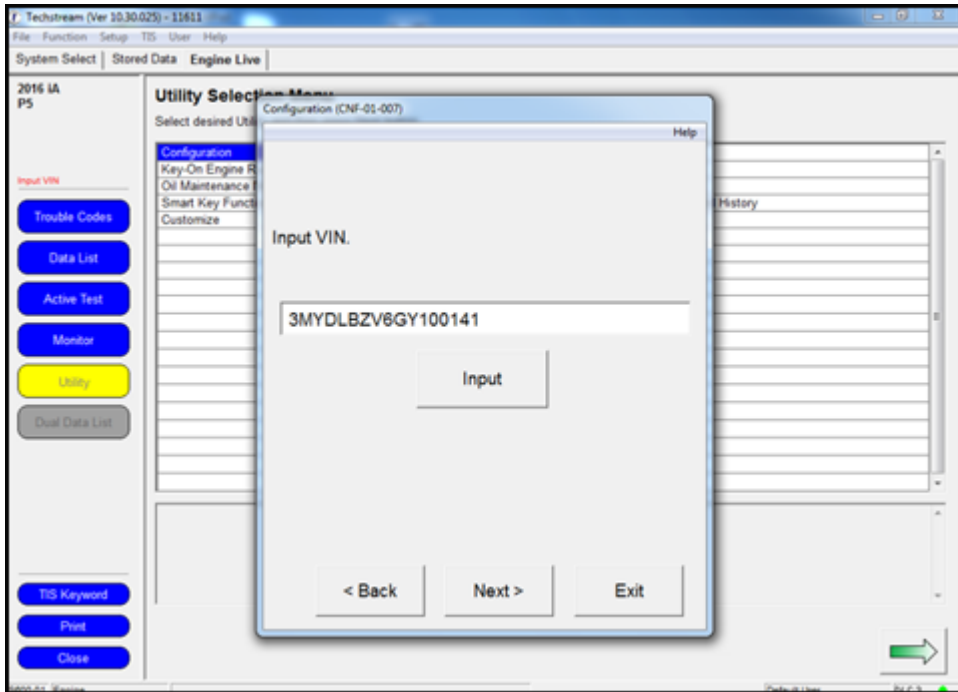


## Load Configuration Data

### Repair Procedure (Continued)

8. Enter the 17 digit VIN of the vehicle being worked on.

**Figure 8.**



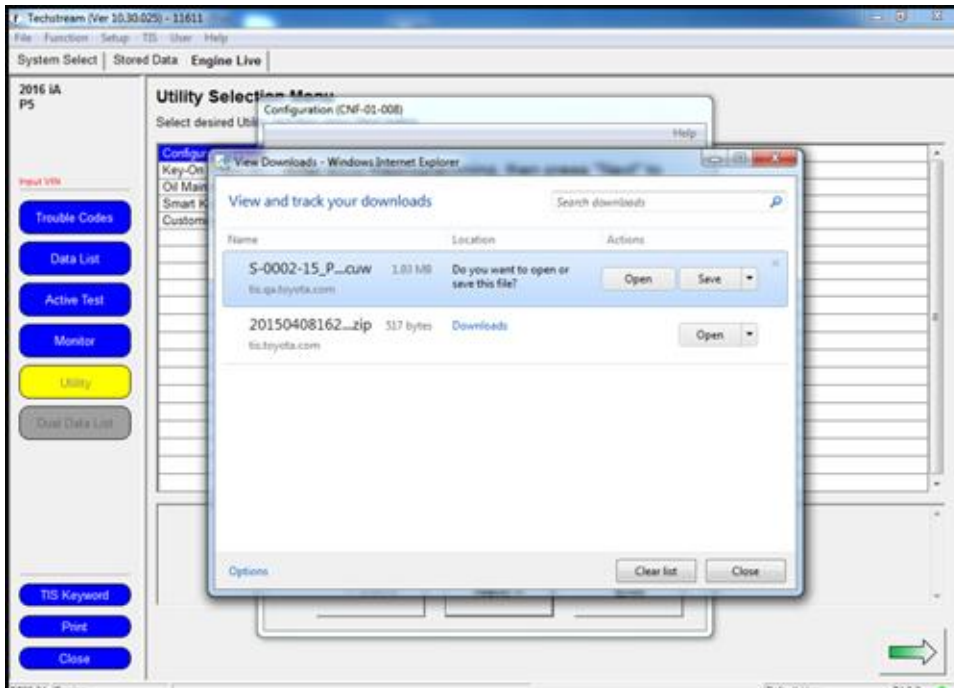
## Load Configuration Data

### Repair Procedure (Continued)

- If you are loading configuration data for the PCM or TCM, a download window will open prompting the download of the calibration for that vehicle. Select *Open* to open the Calibration Update Wizard (CUW).

If you are loading data for any other system, skip to step 12.

**Figure 9.**



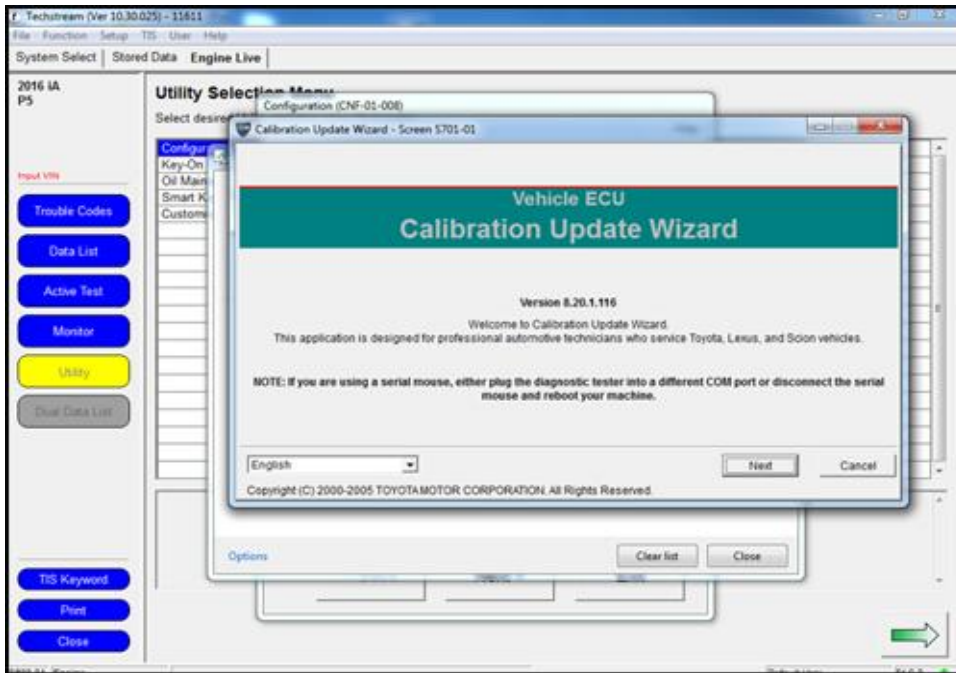


## Load Configuration Data

### Repair Procedure (Continued)

- Follow the instructions for CUW. Please see TSB [S-SB-0015-14](#) Techstream ECU Flash Reprogramming Procedure for more details.

**Figure 10.**



# Load Configuration Data

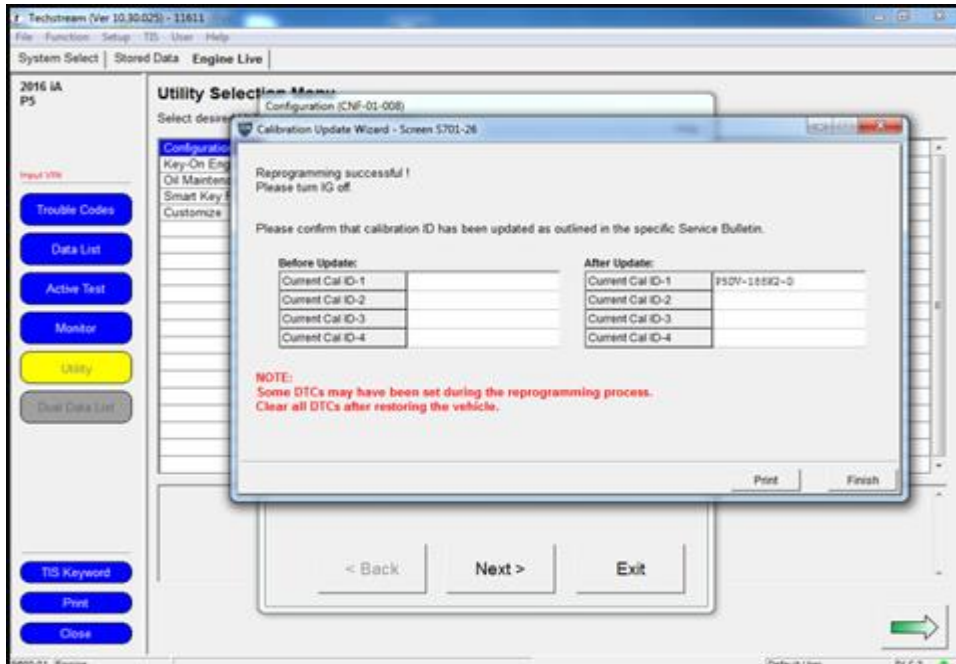
## Repair Procedure (Continued)

11. Once the calibration has been loaded into the vehicle, select *Finish* to close CUW.

**NOTE**

The procedure is not complete yet. Continue through the bulletin.

Figure 11.



# Load Configuration Data

## Repair Procedure (Continued)

12. Continue to follow the prompts in the Utility to load the configuration data.

Figure 12.

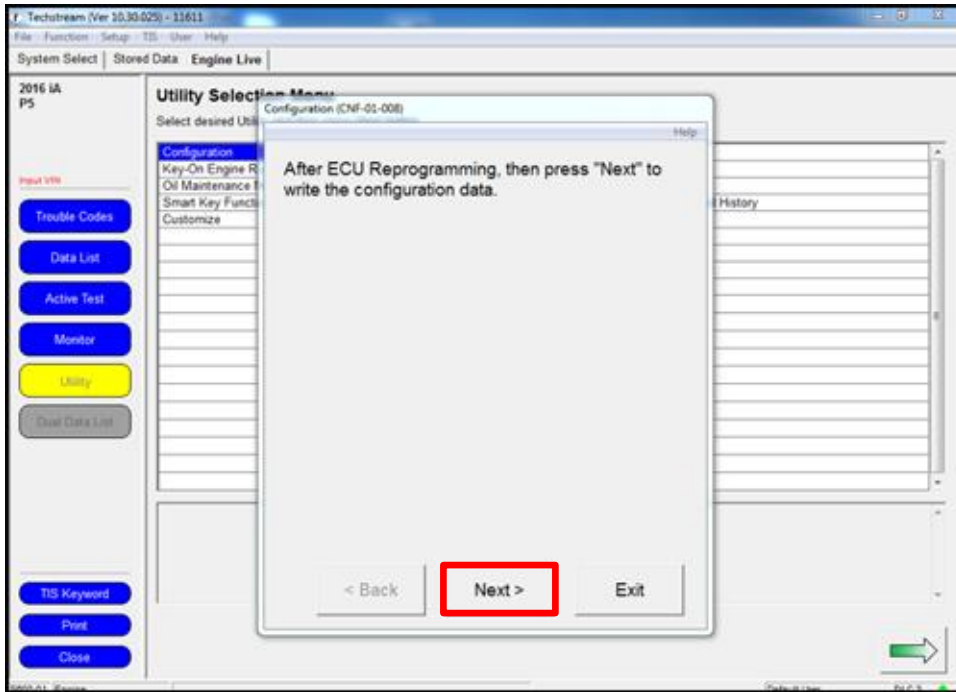
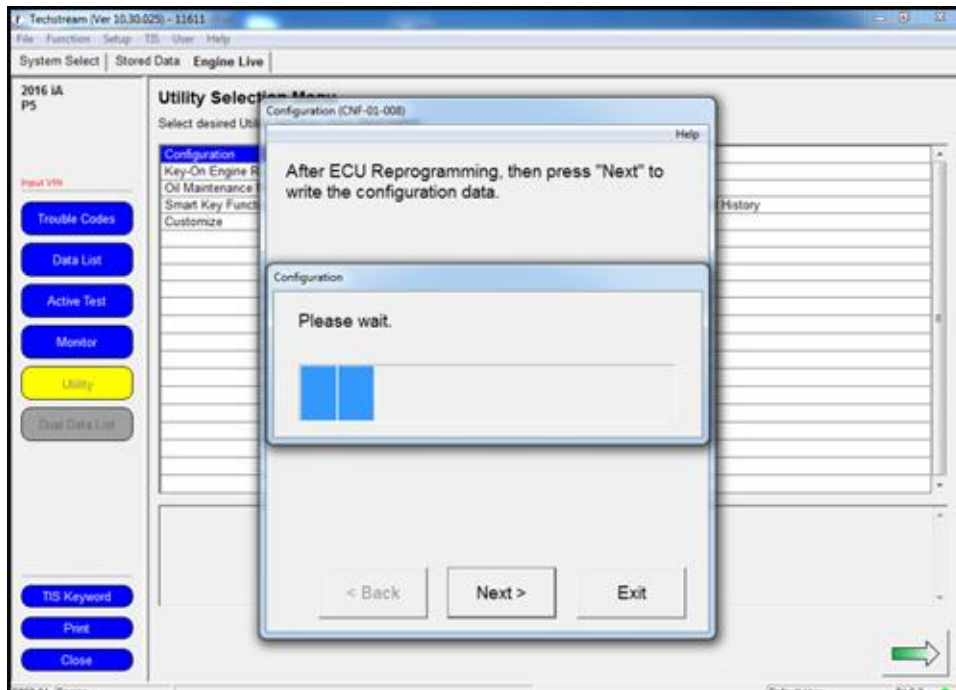


Figure 13.

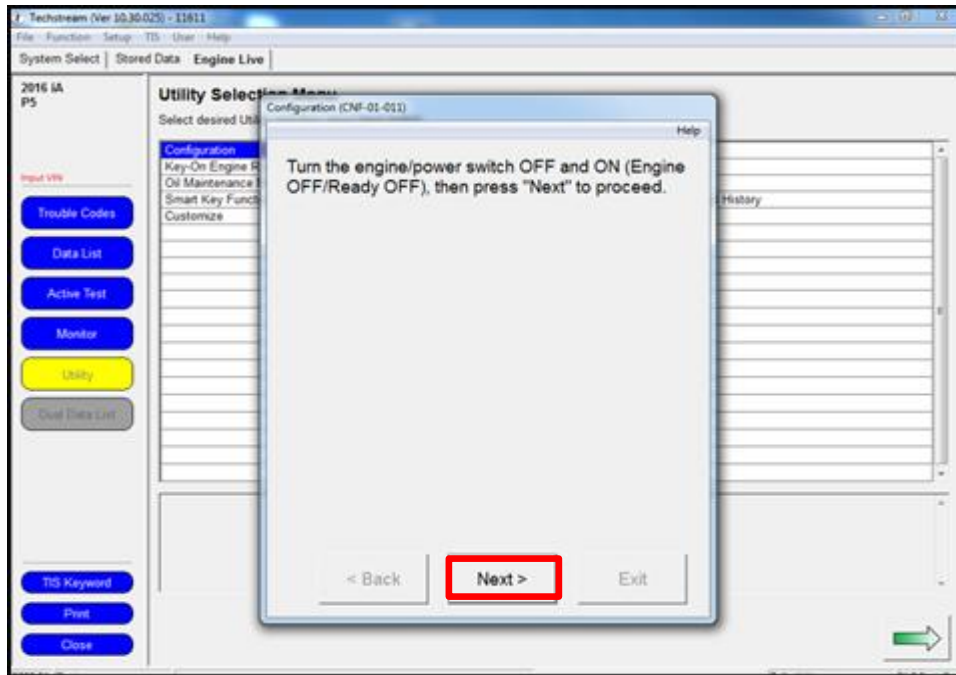


## Load Configuration Data

### Repair Procedure (Continued)

- Turn the engine/power switch OFF and ON (Engine OFF/Ready OFF), then press *Next* to proceed.

**Figure 14.**



## Load Configuration Data

---

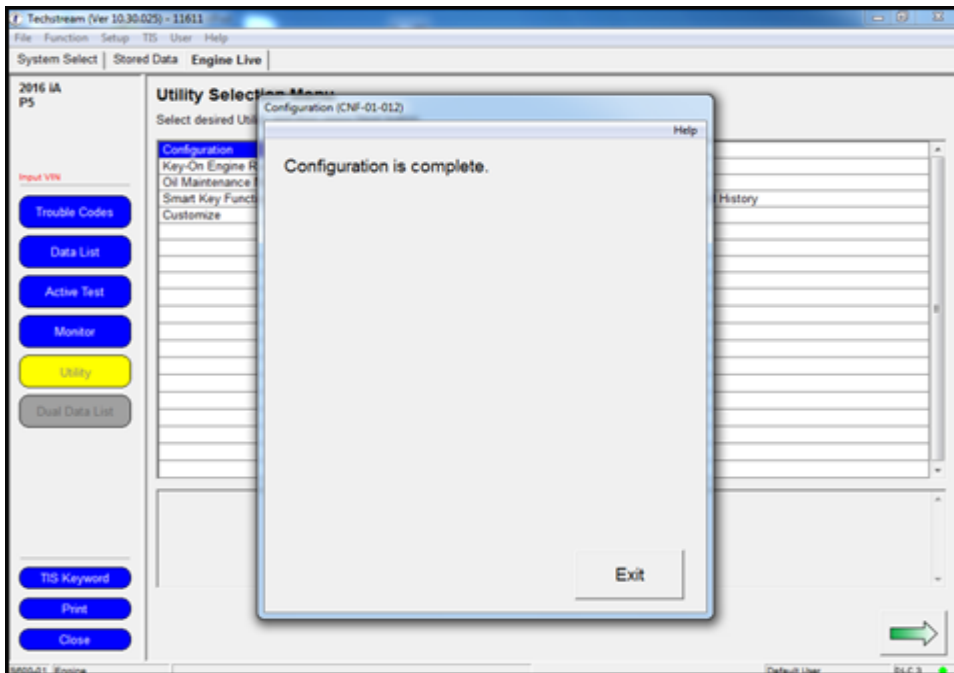
### Repair Procedure (Continued)

14. Configuration is complete, select *Exit*.

**NOTE**

If the PCM or SSU ECU was replaced, you **MUST** complete the handshake to register them together. Please perform procedure B of [S-SB-0022-15](#).

**Figure 15.**



15. Please perform a Health Check and check for any updated calibrations. If there are updates, please check the bulletin to see if the car applies and load as necessary.