

Subject <b>08-10MY Sienna Sliding Door Cable Binding (without coating damage) and Center Hinge Cable Mis-routing</b>		Market USA
Service Category Vehicle Exterior	Section Door/Hatch	
Applicability 08-10 MY Sienna		

**APPLICABLE VEHICLES**

2008-2010	Sienna
-----------	--------

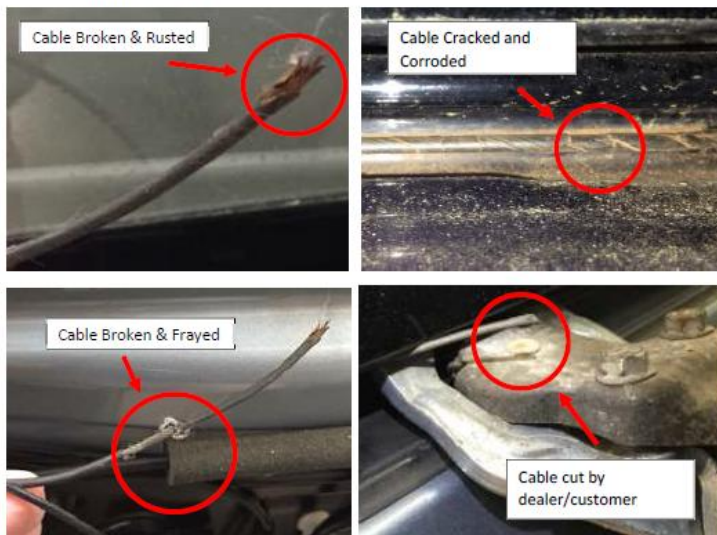
**CONDITION**

Sienna Sliding door not moving/stuck due to cable binding and/or cable mis-routing at central hinge. This applies to sliding door cables without damage to the coating (fraying/cracking/breaking) present. Please look and verify condition of the cable coating before proceeding. Refer to the following for details of both cable conditions.

08-10MY Sienna Possible Cable Conditions

1) Cable binding

- **Do NOT include:** Cable broken, frayed, corroded, cracked, or cut by dealer/customer.



- **INCLUDE:** Cable Binding with no cable coating damage.



Subject

**08-10MY Sienna Sliding Door Cable Binding (without coating damage) and Center Hinge Cable Mis-routing**

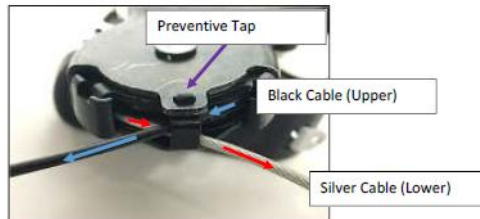
Market

USA

Applicability

2) Cable Mis-routing.

- **Do NOT Include:** cable routed correctly



- **INCLUDE:** Black cable out of the tap, mis-routing of the cables in the guide pulley, and cables routed backwards.

NG Pattern #		
1	Black Cable (Open cable) is out of the tap.	<p>Black Cable outside of pulley.</p>
2	Mis-Routing of the cables in the guide pulley; Both cables into the "same" pulley track (Both cables on top).	<p>Both cables in the same track.</p>
3	Mis-Routing of the cables in the guide pulley; Cables routed backwards. Silver Cable Upper and Black Cable lower.	<p>Silver Cable (Upper) Black Cable (Lower)</p>

**RECOMMENDATIONS**

This issue is currently under investigation.

- Please create a TAS case and contact Technical Assistance (TAS) to submit details on any vehicle identified matching the condition described in this document prior to repair.
- If you are attempting to contact TAS on a weekend or TMS holiday, continue with diagnosis and submit the requested information on the next available work day. Retain all replaced parts and technician notes for possible review with TMS TAS Product Engineer.

**LINK REFERENCES**

This Tech Tip does not contain any link references



<b>Subject</b> <b>08-10MY Sienna Sliding Door Cable Binding (without coating damage) and Center Hinge Cable Mis-routing</b>	<b>Market</b> USA
<b>Applicability</b>	