

# Entune Audio Head Unit Software Update (Panasonic)

**Service Category** Audio/Visual/Telematics

**Section** Navigation/Multi Info Display

**Market** USA

Toyota Supports  
 ASE Certification 

## Applicability

YEAR(S)	MODEL(S)	ADDITIONAL INFORMATION
2016 - 2017	4Runner, Avalon, Avalon HV, Highlander, Highlander HV, Prius, Sequoia, Sienna, Tacoma, Tundra	
2017	Prius V	

### REVISION NOTICE

**October 14, 2016 Rev1:**

- **Applicability has been updated to include 2017 model year Prius V vehicles. Any previous printed versions of this bulletin should be discarded.**

## Introduction

Some 2016 – 2017 model year applicable vehicles equipped with Entune™ Audio (version 01013E) / Entune™ Audio Plus (version 010156 or 01015C) / Entune™ Premium Audio (version 010171 or 010170 or 01017D) may exhibit one or more of the following conditions:

- Head unit rebooting at a specific location
- Abnormal destination search operation
- Rebooting caused by no songs on the USB connected iPhone
- One time reboot after ACC-ON
- Audio stays muted after the key is cycled

Some 2016 – 2017 model year applicable vehicles equipped with Entune™ Audio (version 010144) / Entune™ Audio Plus (version 01015E) / Entune™ Premium Audio (version 010182) or earlier may exhibit one or more of the following conditions:

- Intermittent head unit rebooting
- Half blank screen when on maintenance screen and shifting to reverse
- Screen freezing during incoming phone call
- Incorrect time in the diagnostic menu

## Entune Audio Head Unit Software Update (Panasonic)

---

### Introduction (Continued)

- Radio station information doesn't match radio station that is playing
- Abnormal playlist browsing operation
- Mute stays enabled after key cycle
- "Search along my route" is inoperative
- Improper scaling of traffic data
- Unit missing from distance to destination (showing 11 instead of 11mi)
- MID compass doesn't match navigation screen when switching to North up
- Navigation doesn't match MID when switching from miles to kilometers
- Speed limit is blank on navigation screen
- "Go" button on VR screen is inoperative

Updated system software is now available to address these conditions. Follow the Software Update Procedure in this bulletin to install the latest software version.

### Warranty Information

OP CODE	DESCRIPTION	MODEL	TIME	OFF	T1	T2
EL1608	Software Update	4Runner	0.3	86100-35351	87	74
				86100-35361		
				86100-35371		
				86100-35381		
				86100-35391		
				86100-35401		
				86100-35411		
				86100-35421		
				86100-35431		
				86100-35460		
				86100-35470		
				86100-35510		
				86100-35440		
				86100-35450		
				86100-35480		
				86100-35490		
				86100-35500		
				86100-35520		
		Avalon, Avalon HV		86140-07100		
				86804-07110		
				86804-07120		
				86100-07131		
				86100-07141		

## Entune Audio Head Unit Software Update (Panasonic)

### Warranty Information (Continued)

OP CODE	DESCRIPTION	MODEL	TIME	OFF	T1	T2
EL1608	Software Update	Highlander, Highlander HV	0.3	86804-0E270	87	74
				86100-0E271		
				86804-0E280		
				86100-0E281		
		Prius		86140-47270		
				86804-47340		
				86804-47330		
				86100-47561		
				86100-47461		
		Sequoia		86140-0C150		
				86140-0C160		
				86804-0C160		
				86804-0C170		
				86804-0C180		
				86804-0C190		
				86100-0C220		
		86100-0C230				
		86100-0C240				
		86100-0C250				
		Sienna		86804-08030		
86804-08040						
86100-08061						
86100-08071						
Tacoma	86804-04090					
	86140-04100					
	86804-04120					
	86804-04130					
	86100-04160					
	86100-04170					
	86100-04180					
	86140-04160					
86140-04170						
86140-04180						

## Entune Audio Head Unit Software Update (Panasonic)

### Warranty Information (Continued)

OP CODE	DESCRIPTION	MODEL	TIME	OFP	T1	T2
EL1608	Software Update	Tundra	0.3	86100-0C181 86100-0C191 86100-0C201 86100-0C211 86804-0C120 86804-0C130 86804-0C140 86804-0C150 86140-0C100 86140-0C110 86140-0C120 86140-0C130 86140-0C140	87	74
		Prius V		86100-47601 86100-47611 86100-47621 86100-47631 86804-47290 86804-47300 86804-47310 86804-47320 86140-47450		

#### APPLICABLE WARRANTY

- This repair is covered under the Toyota Basic Warranty. This warranty is in effect for 36 months or 36,000 miles, whichever occurs first, from the vehicle's in-service date.
- Warranty application is limited to occurrence of the specified condition described in this bulletin.

## Entune Audio Head Unit Software Update (Panasonic)

### Firmware Update Information

MODEL	HEAD UNIT	FIRMWARE UPDATE FILE
Avalon, Avalon HV	Entune™ Audio Plus	<a href="#">13TDDANA-DA11_0097.kwi</a>
	Entune™ Premium Audio	<a href="#">13TDANNA-DA12_0137.kwi</a>
Tacoma, Tundra, Prius, Prius V	Entune™ Audio	<a href="#">13TBDANA-DA10_0069.kwi</a>
Tacoma, Tundra, Sequoia	Entune™ Audio Plus	<a href="#">13TDDANA-DA10_0097.kwi</a>
Tundra (South America)	Entune™ Audio Plus	<a href="#">13TDDANA-DA12_0097.kwi</a>
Tacoma, Tundra, Prius, Prius V, Sequoia, Highlander, Highlander HV, 4Runner, Sienna	Entune™ Premium Audio	<a href="#">13TDANNA-DA11_0137.kwi</a>

#### MULTIMEDIA SOFTWARE FILE DOWNLOAD

The Multimedia software update file may be downloaded directly from this Service Bulletin by clicking on the applicable file name in the table above. Once downloaded, the file may be copied directly to a commonly-available blank USB flash drive.

For USB flash drive requirements and download instructions: Refer to the Technical Information System (TIS): *Diagnostics – Reprogramming – Reference Documents – “[Multimedia Software Download Instructions](#)”*

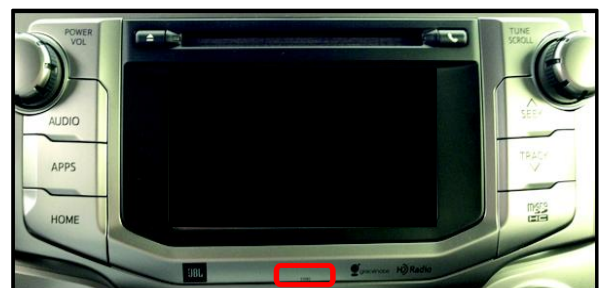
### Software Update Procedure

1. Confirm the audio system type by checking the Panel ID printed on the bottom-right or bottom-center of the machine.

Figure 1. Avalon, Avalon HV, Highlander, Highlander HV, Prius, Prius V, Sienna, Sequoia, Tacoma & Tundra.



Figure 2. 4Runner



## Entune Audio Head Unit Software Update (Panasonic)

### Software Update Procedure (Continued)

**Table 1. Panel ID Information**

MODEL	Entune™ Audio	Entune™ Audio Plus	Entune™ Premium Audio
4Runner	N/A	N/A	510139
			510140
			510141
			510142
			510143
			510144
			510145
			510146
Highlander, Highlander HV	N/A	N/A	510147
			510159
Sequoia	N/A	510151 510152	510160
			510153
			510154
			510155
Tacoma	510100 510101	510102 510162	510156
			510103
			510161
Tundra	510113	510114 510116 510117	510104
			510118
			510119
			510120
Avalon, Avalon HV	N/A	510129	510121
			510130
Sienna	N/A	N/A	510131
			510157
Prius	510028	N/A	510158
			510053
Prius V	510163	N/A	510054
			510164
			510165
			510166
			510167

2. Start the engine.
3. Insert the USB flash drive with the downloaded multimedia update file into the vehicle's USB port.

# Entune Audio Head Unit Software Update (Panasonic)

## Software Update Procedure (Continued)

4. Go to the *Setup* screen.

A. For Entune™ Audio: Press the SETUP button on the panel.

Figure 3. Tacoma, Prius, Prius V



Figure 4. Tundra



B. For Entune™ Audio Plus/Entune™ Premium Audio: Press the APPS button on the panel.

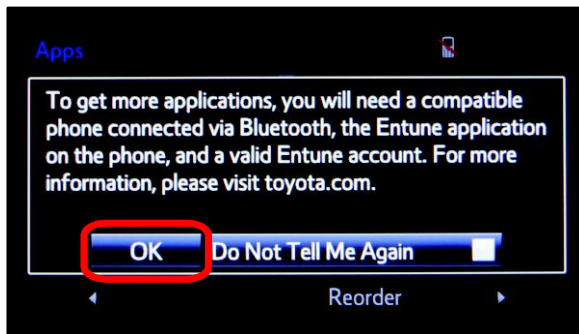
Figure 5. 4Runner, Avalon, Avalon HV, Highlander, Highlander HV, Prius, Prius V, Sienna, Sequoia, Tacoma & Tundra



Figure 6. Tundra



Figure 7.



**NOTE**

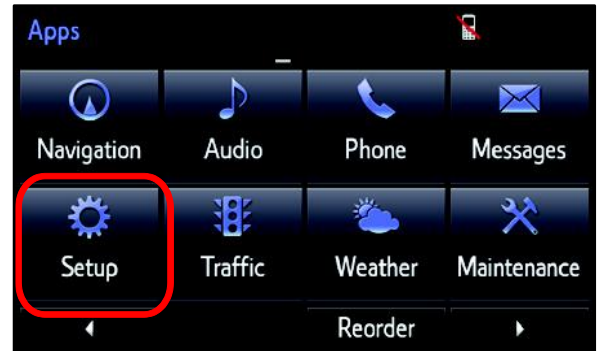
If Entune™ pop-up displays, select **OK**.

## Entune Audio Head Unit Software Update (Panasonic)

### Software Update Procedure (Continued)

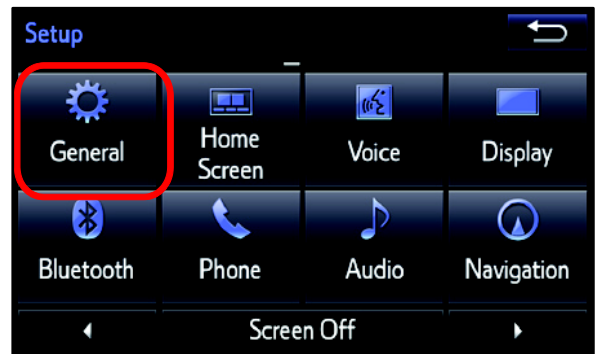
Select *Setup* on the Apps Screen.

Figure 8.



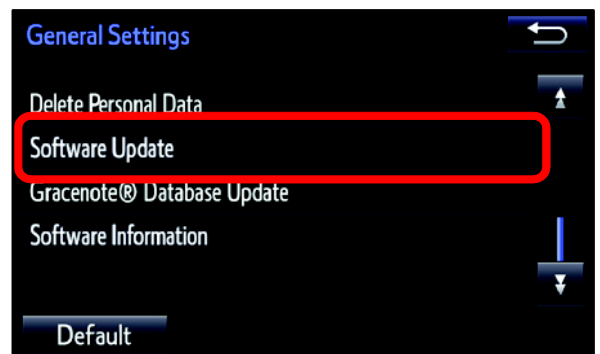
5. Select *General* on the Setup screen.

Figure 9.



6. Select *Software Update* from the list on the *General Settings* screen.

Figure 10.



**HINT**

Scroll down the list until *Software Update* is displayed.

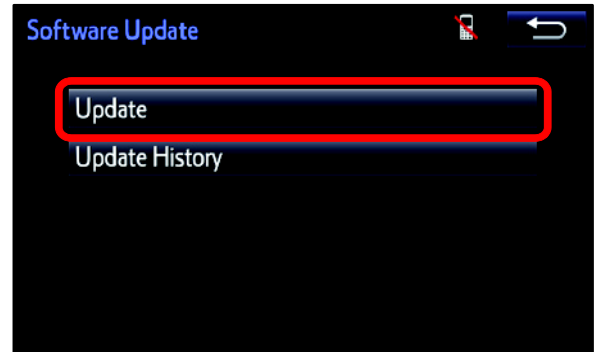


## Entune Audio Head Unit Software Update (Panasonic)

### Software Update Procedure (Continued)

7. Select *Update* on the *Software Update* Screen.

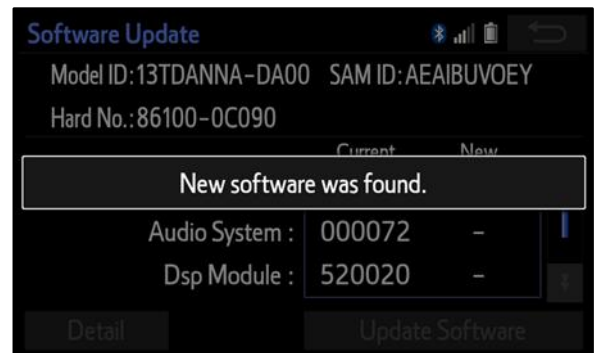
Figure 11.



**NOTE**

If software has been detected properly, a "New software was found." pop-up will be displayed.

Figure 12.



8. Verify that the new software is up-to-date on the *Software Update* screen.

Figure 13.



## Entune Audio Head Unit Software Update (Panasonic)

### Software Update Procedure (Continued)

Table 2. Software Version Information

TYPE	Entune™ Audio		Entune™ Audio Plus		Entune™ Premium Audio	
	CURRENT VERSION	NEW VERSION	CURRENT VERSION	NEW VERSION	CURRENT VERSION	NEW VERSION
Audio	01013E 010144	010145	010156 01015C 01015E	010161	010170 010171 01017D 010182	010189
Audio System	00008E	–	000093	–	000095	–
Dsp Module	910010	–	A10010	–	A10010	–
Sub	010001	–	010001	–	010001	–
Can	130209	–	130209	–	130209	–

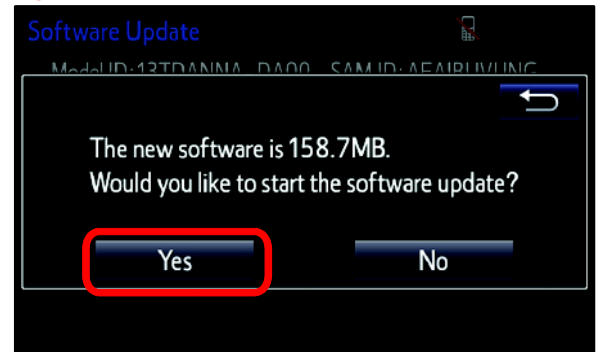
9. Select Update Software on the Software Update screen.

Figure 14.



10. Select Yes on the “Would you like to start the software update?” pop-up.

Figure 15.



## Entune Audio Head Unit Software Update (Panasonic)

### Software Update Procedure (Continued)

- The unit begins installation. The update will take about 10 minutes.

**NOTE**

- Do NOT turn off the engine or ACC before the software is ready for updating.
- Do NOT pull the USB flash drive out of the vehicle USB port.

For Entune™ Premium Audio:

If update fails and the error message “New software is not compatible with the system.” displays, cycle the ignition OFF, remove the Map Micro SD Card from the head unit, and repeat steps 3 – 11.

**NOTE**

Software update error is more likely to occur in areas with more traffic information.

Once update is complete, reinsert the Map Micro SD card into the head unit, cycle the ignition OFF, and proceed to step 12.

- When “The software is ready for updating.” displays, cycle the ignition OFF.

- Remove the USB flash drive from the vehicle USB port.

**Figure 16.**

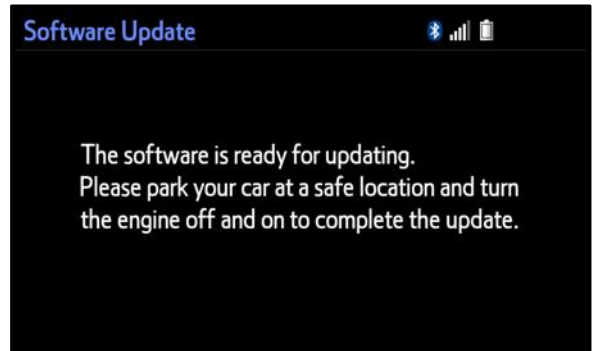


**Figure 17.**



**1** Map Micro SD Card

**Figure 18.**



## Entune Audio Head Unit Software Update (Panasonic)

### Software Version Confirmation

1. Perform steps 3 – 6 of the Software Update procedure to re-enter the Software Update screen.
2. Verify that the software information is updated on the Software Update screen.

Figure 19.



Table 3. New Software Version Information

TYPE	Entune™ Audio		Entune™ Audio Plus		Entune™ Premium Audio	
	CURRENT VERSION	NEW VERSION	CURRENT VERSION	NEW VERSION	CURRENT VERSION	NEW VERSION
Audio	010145	–	010161	–	010189	–
Audio System	00008E	–	000093	–	000095	–
Dsp Module	910010	–	A10010	–	A10010	–
Sub	010001	–	010001	–	010001	–
Can	130209	–	130209	–	130209	–

\* Updated version information