

MIL "ON" DTC P2610

Service Category Engine/Hybrid System

Section Engine Control

Market USA

Toyota Supports
ASE Certification 

Applicability

YEAR(S)	MODEL(S)	ADDITIONAL INFORMATION
2014 - 2016	Tundra	

Introduction

Some 2014 – 2016 model year Tundra vehicles may exhibit a MIL "ON" condition with Diagnostic Trouble Code (DTC) P2610 (ECM/PCM Engine Off Timer Performance) present. The Engine Control Module (ECM) logic has been modified to reduce the possibility of this condition. Follow the Repair Procedure below to address this condition.

MIL "ON" DTC P2610

Warranty Information

OP CODE	DESCRIPTION	TIME	MODEL YEAR	ENGINE	DRIVETRAIN	OFF	T1	T2
EG1631	Reprogram ECM (PCM)	0.4	2014 – 2016	1UR-FE	STD 2WD/4WD	89661-0CN60 89661-0CN61	8A	99
					TOW 2WD/4WD	89661-0CM10 89661-0CM11		
				3UR-FE	STD 2WD/4WD	89661-0CP00 89661-0CP01 89661-0CP02		
					TOW 2WD/4WD	89661-0CP10 89661-0CP11 89661-0CP12		
			2015 – 2016		Large Tank 2WD/4WD	89661-0CP80 89661-0CP81		
			2014 – 2015	3UR-FBE	FBE STD	89661-0CP30 89661-0CP31 89661-0CP32 89661-0CP33		
					FBE TOW	89661-0CP40 89661-0CP41 89661-0CP42 89661-0CP43		
			2015		FBE Large Tank	89661-0CP90 89661-0CP91 89661-0CP92		
			2016		FBE STD 2WD/4WD	89661-0CQ00		
					FBE TOW 2WD/4WD	89661-0CQ10		
					FBE Large Tank 2WD/4WD	89661-0CQ20		

APPLICABLE WARRANTY

- This repair is covered under the Toyota Federal Emission Warranty. This warranty is in effect for 96 months or 80,000 miles, whichever occurs first, from the vehicle's in-service date.
- Warranty application is limited to occurrence of the specified condition described in this bulletin.

MIL "ON" DTC P2610

Parts Information

YEAR	ENGINE	DRIVETRAIN	PART NUMBER		PART NAME	QTY
			PREVIOUS	NEW		
2014 – 2016	1UR-FE	STD 2WD/4WD	89661-0CN60 89661-0CN61	89661-0CN62	Computer, Engine Control (ECM)	–
		TOW 2WD/4WD	89661-0CM10 89661-0CM11	89661-0CM12		–
	3UR-FE	STD 2WD/4WD	89661-0CP00 89661-0CP01 89661-0CP02	89661-0CP03		–
		TOW 2WD/4WD	89661-0CP10 89661-0CP11 89661-0CP12	89661-0CP13		–
2015 – 2016		Large Tank 2WD/4WD	89661-0CP80 89661-0CP81	89661-0CP82		–
2014 – 2015	3UR-FBE	FBE STD	89661-0CP30 89661-0CP31 89661-0CP32 89661-0CP33	89661-0CP34		–
		FBE TOW	89661-0CP40 89661-0CP41 89661-0CP42 89661-0CP43	89661-0CP44		–
2015		FBE Large Tank	89661-0CP90 89661-0CP91 89661-0CP92	89661-0CP93		–
2016		FBE STD 2WD/4WD	89661-0CQ00	89661-0CQ01	–	
		FBE TOW 2WD/4WD	89661-0CQ10	89661-0CQ11	–	
		FBE Large Tank 2WD/4WD	89661-0CQ20	89661-0CQ21	–	
–	–	–	00451-00001-LBL		Authorized Modification Labels	1

NOTE

- The ECM (PCM) should NOT be replaced as part of the Repair Procedure.
- Authorized Modification Labels may be ordered in packages of 25 from the Materials Distribution Center (MDC) through *Dealer Daily – Parts – Dealer Support Material Order*.


MIL "ON" DTC P2610

Required Tools & Equipment

REQUIRED EQUIPMENT	SUPPLIER	PART NUMBER	QTY
Techstream 2.0*	ADE	TS2UNIT	1
Techstream Lite		TSLITEPDLR01	
Techstream Lite (Green Cable)		TSLP2DLR01	

NOTE

- Only ONE of the Techstream units listed above is required.
- Software version 11.20.019 or later is required.
- Additional Techstream units may be ordered by calling Approved Dealer Equipment (ADE) at 1-800-368-6787.
- The Diagnostic Tester is NOT recommended for flash reprogramming. Please use Techstream or an approved J2534 interface to perform flash reprogramming updates. Visit techinfo.toyota.com for more information regarding J2534 reprogramming.



SPECIAL SERVICE TOOLS (SST)	PART NUMBER	QTY
GR8 Battery Diagnostic Station*	00002-MCGR8	1

NOTE

Additional SSTs may be ordered by calling 1-800-933-8335.

* Essential SST.

MIL "ON" DTC P2610

Calibration Information

YEAR	ENGINE	DRIVETRAIN	ECU	CALIBRATION ID	
				PREVIOUS	NEW
2014 – 2016	1UR-FE	STD 2WD	Main	30CL5000 30CL5100	30CL5200
		STD 4WD	Main	30CL5001 30CL5101	30CL5201
		TOW 2WD	Main	30CM1000 30CM1100	30CM1200
		TOW 4WD	Main	30CM1001 30CM1101	30CM1201
	3UR-FE	STD 2WD	Main	30CL0000 30CL0100 30CL0200	30CL0300/50C80100
			Sub	50C80000	
		STD 4WD	Main	30CL0001 30CL0101 30CL0201	30CL0301/50C80101
			Sub	50C80001	
		TOW 2WD	Main	30CL1000 30CL1100 30CL1200	30CL1300/50C81100
			Sub	50C81000	
		TOW 4WD	Main	30CL1001 30CL1101 30CL1201	30CL1301/50C81101
			Sub	50C81001	
2015 – 2016	Large Tank 2WD	Main	30CM2000 30CM2100	30CM2200/50C81100	
		Sub	50C81000		
	Large Tank 4WD	Main	30CM2001 30CM2101	30CM2201/50C81101	
		Sub	50C81001		

MIL "ON" DTC P2610

Calibration Information (Continued)

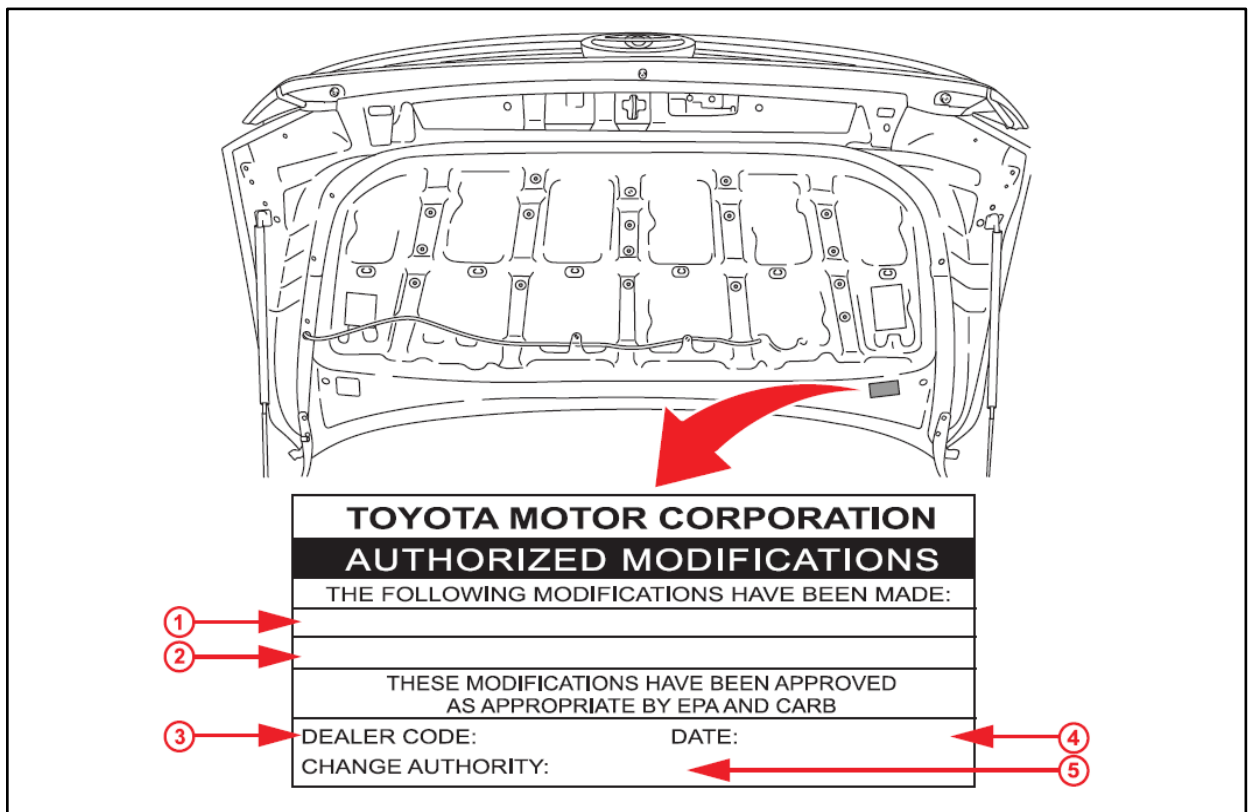
YEAR	ENGINE	DRIVETRAIN	ECU	CALIBRATION ID	
				PREVIOUS	NEW
2014 – 2015	3UR-FBE	FBE STD	Main	30CL3000 30CL3100 30CL3200 30CL3300	30CL3400/50C83100
			Sub	50C83000	
		FBE TOW	Main	30CL4000 30CL4100 30CL4200 30CL4300	30CL4400/50C84100
			Sub	50C84000	
2015		FBE Large Tank	Main	30CM3000 30CM3100 30CM3200	30CM3300/50C84100
			Sub	50C84000	
2016		FBE STD 2WD	Main	30CM6000	30CM6100
		FBE STD 4WD	Main	30CM6001	30CM6101
	FBE TOW 2WD	Main	30CM7000	30CM7100	
	FBE TOW 4WD	Main	30CM7001	30CM7101	
	FBE Large Tank 2WD	Main	30CM5000	30CM5100	
	FBE Large Tank 4WD	Main	30CM5001	30CM5101	

MIL "ON" DTC P2610

Repair Procedure

- Using Techstream, check for the following stored DTC:
 P2610 – ECM/PCM Engine Off Timer Performance
 Is the DTC present?
 - YES** – Go to step 2.
 - NO** – This bulletin does NOT apply. Continue diagnosis using the applicable Repair Manual.
- Check for the Authorized Modifications Label affixed to vehicle in the location shown below. Confirm if the ECM (PCM) calibration has been updated.
 Is the calibration ID listed NOT the latest ECM (PCM) calibration?
 - YES** – Go to step 3.
 - NO** – This Service Bulletin does NOT apply. Continue diagnosis using the applicable Repair Manual.

Figure 1. Location of Authorized Modification Label for 2014 – 2016 Tundra



1	Replacement ECM (PCM) Part Number (i.e., 89661-0CN62 or 89661-0CN62 etc.)
2	New Calibration ID (i.e., 30CL5200 or 30CL5201)
3	Dealer Code

4	Date Completed
5	This SB Number

MIL "ON" DTC P2610

Repair Procedure (Continued)

- Flash reprogram the ECM (PCM).

NOTE

- The GR8 Battery Diagnostic Station **MUST** be used in Power Supply Mode to maintain battery voltage at 13.5 volts while flash reprogramming vehicle.
- For details on how to use the GR8 Battery Diagnostic Station, refer to the [GR8 Instruction Manual](#) located on the Technical Information System (TIS), *Diagnostics – Tools & Equipment – Battery Diagnostics*.

Follow the procedures outlined in Service Bulletin No. [T-SB-0134-16](#), "Techstream ECU Flash Reprogramming Procedure," and flash the ECM (PCM) with the NEW calibration file update.

- Install the Authorized Modifications Label.
 - Using a permanent marker, enter the following information on the label:
 - ECM part number [Refer to the **Parts Information** section for the **NEW PART NUMBER**]
 - Calibration ID(s) [Refer to the **Calibration Information** section for the **NEW CALIBRATION ID**]
 - Dealer Code
 - Repair Date
 - Change Authority [**This bulletin number**]
- Affix the Authorized Modifications Label to the vehicle at the location shown in Figure 1. The Authorized Modifications Label is available through the MDC, P/N 00451-00001-LBL.
- Test drive the vehicle to confirm proper vehicle operation.