

General Information

Inspecting the air intake system for damage or leaks should be performed daily as outlined in the *Daily Pretrip Inspection and Maintenance Procedures* of the *S2 Chassis Operator's Manual*.

Ensuring that the air cleaner element maintenance is performed at the scheduled intervals for vehicles operating in dusty environments is very important. See section **00-04** in the *S2 Chassis Maintenance Manual* to determine the correct schedule for your vehicle.

This bulletin provides information for air cleaner element inspection and replacement, as well as, air intake seal installation and leak check.

Air Cleaner Element Inspection and Replacement

IMPORTANT: Due to the variety of possible driving conditions (dirt roads, paved roads, etc.), it is critical to check the air restriction indicator, if so equipped. If the vehicle is not equipped with an air restriction indicator, inspect all components of the air intake system and air filter every six months. Replace the air filter every 12 months, or when filter restriction reaches 25 inH₂O for diesel engines, or when the air restriction indicator is completely red for propane engines (if equipped with an air restriction indicator). **More frequent inspections and/or filter replacement may be needed if the vehicle is being operated in a dusty environment, to avoid damaging the engine.**

Inspection

Remove and visually inspect the air filter for holes, tears, cracks, or other damage at the recommended interval. Remove loose debris, such as leaves or pine needles, from the filter housing. If the air filter is damaged, replace it. See **Group 09** of the *S2 Chassis Workshop Manual* for removal and installation instructions, or take the vehicle to an authorized Freightliner dealer.

Engine damage can occur if the air intake system is not properly maintained. Use the air intake restriction indicator to check for air intake system damage or leaks. See **Fig. 1** and **Fig. 2**. Make sure the engine is off and note the existing reading on the indicator. Reset the indicator by pushing it down. See **Fig. 1** and **Fig. 2**. Start the engine and take a short test drive. Check the indicator again and note the level of restriction on the indicator. A decrease from the previous level of restriction or a very low air restriction indicator reading (0 to 4 inH₂O) could indicate an air intake system problem such as a damaged air filter, loose or disconnected air intake piping, or a disconnected or damaged air restriction indicator.

Replacement

NOTICE

Do not use aftermarket air-cleaner elements. Aftermarket air-cleaner elements may not seal the housing correctly, which can lead to engine damage and potentially the loss of warranty. When replacing an air-cleaner element, use only the part listed in PartsPro® for the serial number of the vehicle.

Replace the air filter every 12 months, or when filter restriction reaches 25 inH₂O for diesel engines, or when the air restriction indicator is completely red for propane engines (if equipped with an air restriction indicator). See **Group 09** of the *S2 Chassis Workshop Manual* for removal and installation instructions, or take the vehicle to an authorized Freightliner dealer.

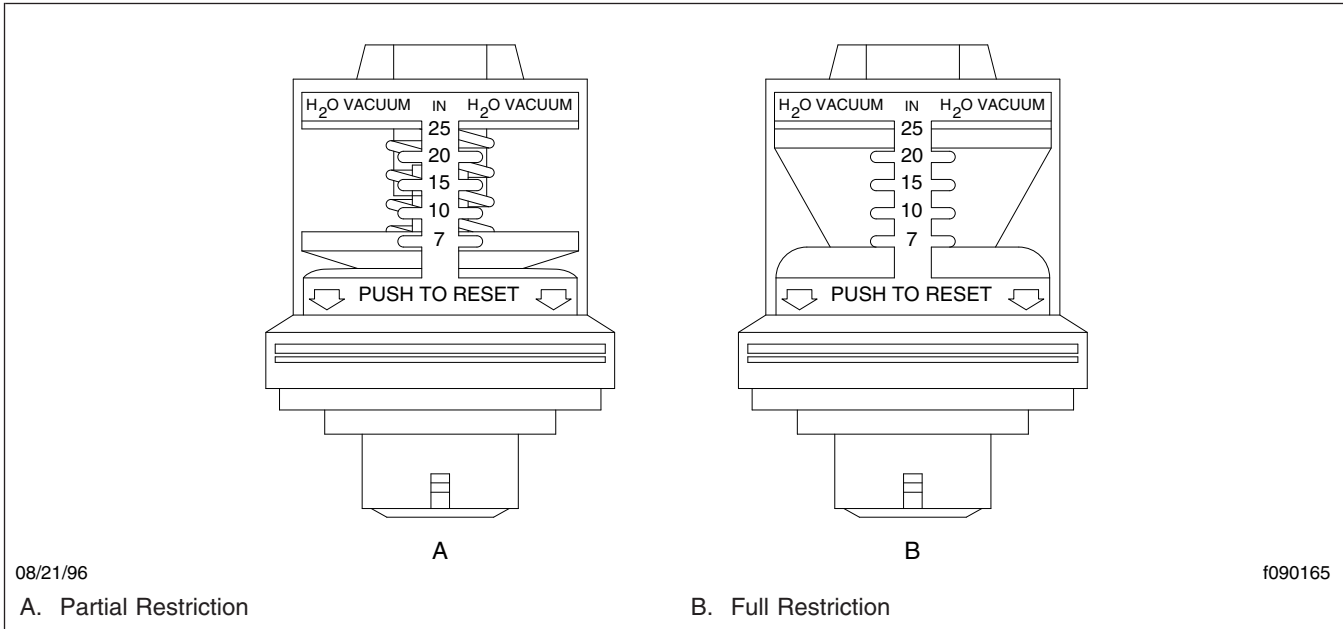


Fig. 1, Air Restriction Indicator, Diesel Engines

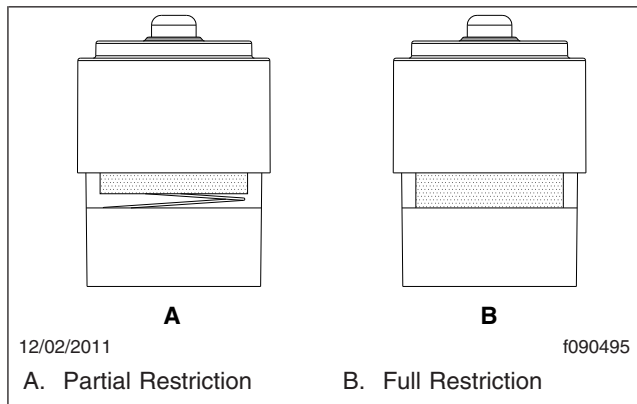


Fig. 2, Air Restriction Indicator, Propane Engines

Air Intake Seal Installation and Leak Check

It is recommended that vehicles operating in dusty environments that are equipped with air cleaner 03-37678-000, install air intake seal 03-35087-002. This will improve the sealing quality of the air cleaner and help prevent dust from entering the air intake ducting. See the steps below for seal installation.

1. Park the vehicle on a level surface, shut down the engine, and set the parking brake. Chock the tires.
2. Loosen the clamps at the air cleaner and turbocharger, then remove the air intake duct. See [Fig. 3](#).

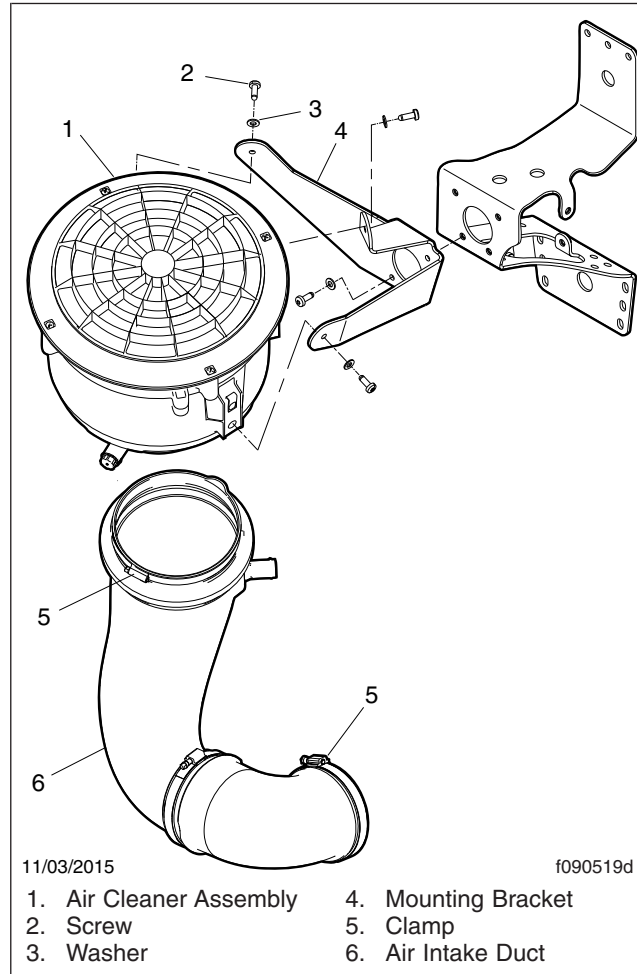


Fig. 3, Air Cleaner Assembly Installation

3. Remove any dust and debris in the air cleaner outlet.
4. Install the air intake seal on the air cleaner outlet as shown in [Fig. 4](#).

NOTE: P-80® Rubber Lubricant Emulsion eases installation of tight-fitting rubber and plastic parts by reducing the force needed for assembly. Once assembly is complete, the emulsion dries and the part returns to its original condition. Use P-80 Rubber Lubricant Emulsion when a thin film of lubricant is desired.

5. Apply P-80 Rubber Lubricant Emulsion to the seal and base of the air cleaner housing to help install the housing into the duct. See [Fig. 5](#).

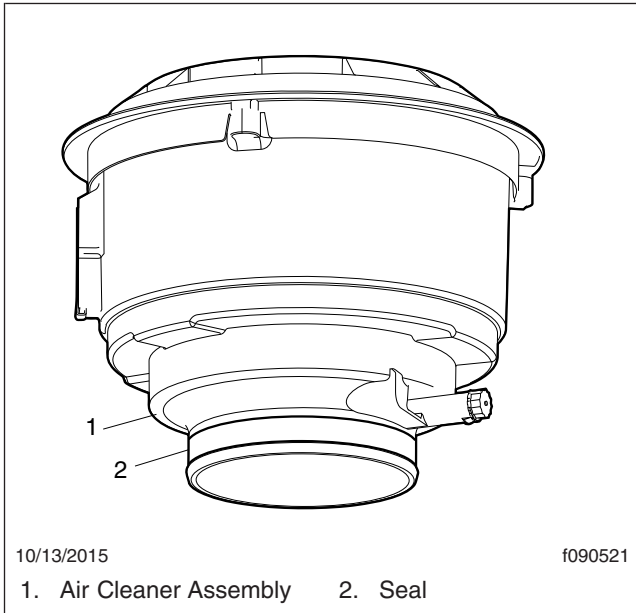


Fig. 4, Assembly, Air Intake Seal and Housing

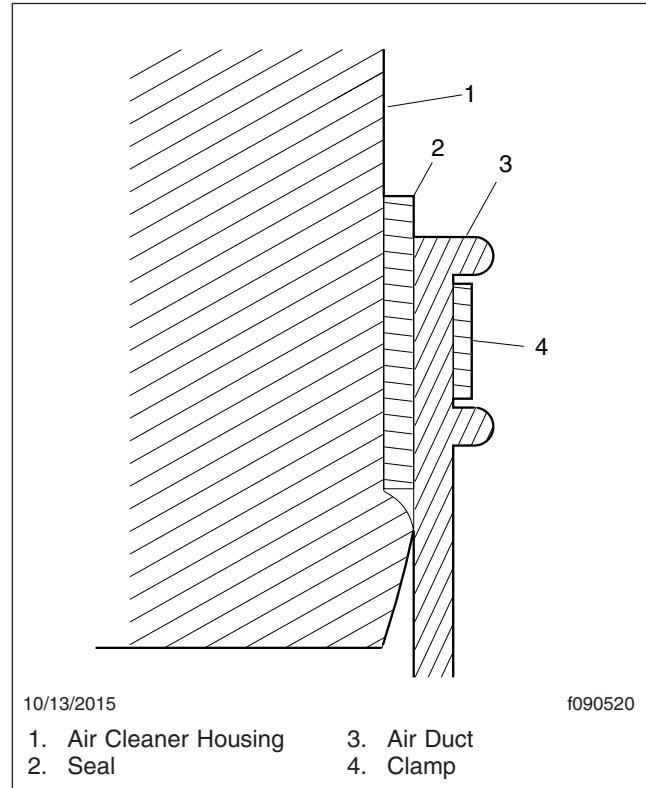


Fig. 5, Installation, Air Intake Seal and Housing

6. Wipe clean the inside and outside of the air duct, then install it on the vehicle. Tighten the clamp at the turbo charger 90 lbf-in (1017 N-cm) and the clamp at the air cleaner 40 lbf-in (452 N-cm).
7. Use the air intake restriction indicator to check for air intake system damage or leaks. See [Fig. 1](#) and [Fig. 2](#). Make sure the engine is off and note the existing reading on the indicator. Reset the indicator by pushing it down. See [Fig. 1](#) and [Fig. 2](#). Start the engine and take a short test drive. Check the indicator again and note the level of restriction on the indicator. A decrease from the previous level of restriction or a very low air restriction indicator reading (0 to 4 inH₂O) could indicate an air intake system problem such as a damaged air filter, loose or disconnected air intake piping, or a disconnected or damaged air restriction indicator.

Parts

The seal is available through the Parts Distribution Center (PDC). For air cleaner 03-37678-000, use air intake seal 03-35087-002.

Warranty

This is an informational bulletin only; warranty does not apply.