



BLUE BIRD

S16YJ

February 4, 2016

To: Blue Bird Owner

Subject: S16YJ, Rear Engine Exhaust Cables

Models Affected: Certain 2011-2017 Model Year All American Model School Bus and Non-School Bus

Bulletin Duration: One (1) Year from Date of Issue

Overview:

Certain 2011 through 2017 model year Blue Bird All American Rear Engine school and non-school buses manufactured from June 5, 2010 through December 8, 2015, and equipped with optional Cummins diesel engines may experience failure of the 5.50" rear engine exhaust support cables. Instructions are provided for Service Bulletin S16YJ, Rear Engine Exhaust Cables.

Affected Units:

On the subject buses, the possibility exists for the 5.50" exhaust cable assembly to fail. To correct this new 6.00" exhaust cable assemblies should be ordered through **Blue Bird Service Parts** to replace the existing eight (8) 5.50" cables.

Repair Parts:

The eight (8) 6.00" exhaust support cable assemblies required to perform Service Bulletin S16YJ should be ordered through **Blue Bird Service Parts** to replace each of the 5.50" exhaust support cables. Parts are currently available.

Time Allowance:

Time allowed to install eight (8) 6.00" exhaust cables in each bus is one (1) hour.

Completion Notification:

If you perform this service bulletin yourself or have an outside repair facility perform this bulletin, please notify your Blue Bird Dealer when the repair is completed. Send the body number, repair date, and odometer reading to your Blue Bird Dealer. If you request reimbursement for labor, also send a copy of the work order/invoice to your Blue Bird Dealer.

Bulletin Duration:

This Service Bulletin ends one (1) year from date of issue.

BLUE BIRD BODY COMPANY

P.O. Box 937 – 402 Blue Bird Blvd – Fort Valley, Georgia – (478) 825-2021

Repair Facility:

We encourage you to contact your Blue Bird dealer to arrange to have this Service Bulletin performed. However, you may elect and have the option to perform this Service Bulletin yourself or have a qualified repair facility convenient to you perform this work. A qualified technician must perform work required under this bulletin.

Questions:

Questions regarding this bulletin should be directed to your Blue Bird Field Service Engineer.

Regards,

Lisa Hancock

Lisa Hancock
Engineering Services
402 Blue Bird Blvd.
Fort Valley, GA 31030
Phone: 478-822-2242
lisa.hancock@blue-bird.com





Rear Engine Exhaust Cables

BULLETIN

Models Affected: Certain 2011 – 2017 Model Year Rear Engine All American Buses with a Selective Catalytic Reduction (SCR) and Diesel Particulate Filter (DPF).

ISSUE

Rear engine exhaust support cables may fail.

CORRECTIVE ACTION

Replace existing 5.5 inch cable assembly with new 6.0 inch cable assembly 10047279.

PROCEDURE

WARNING:

Always follow all Federal, State, Local, and Shop safety standards and use proper safety equipment, and thoroughly read and understand all instructions before performing these procedures.

CAUTION:

Allow exhaust system to cool prior to performing these procedures to prevent the risk of severe burns.

1. Park the bus on a level surface, apply parking brake, turn off engine, remove ignition key, and chock wheels.
2. Locate the four muffler hanger strap assemblies supporting the SCR and DPF at the rear of the bus.
3. Support the SCR and DPF, and replace the eight (8) 5.5 inch exhaust support cable assemblies with eight (8) 6.0 inch exhaust support cable assembly 10047279. Replace each cable assembly by removing the nut at the top of the cable assembly and the nut and washer at the bottom of the cable assembly. Discard old nuts, DO NOT reuse. Remove and discard the 5.5 inch cable assembly. Install the new 6.0 inch cable assembly and new nut at the top and new nut and washer at bottom.
4. Torque upper 3/8" nut to 72 – 78 in-lb. Toque lower 3/8" nut to 29 - 33 ft-lb.

See Sheet 2 for illustration

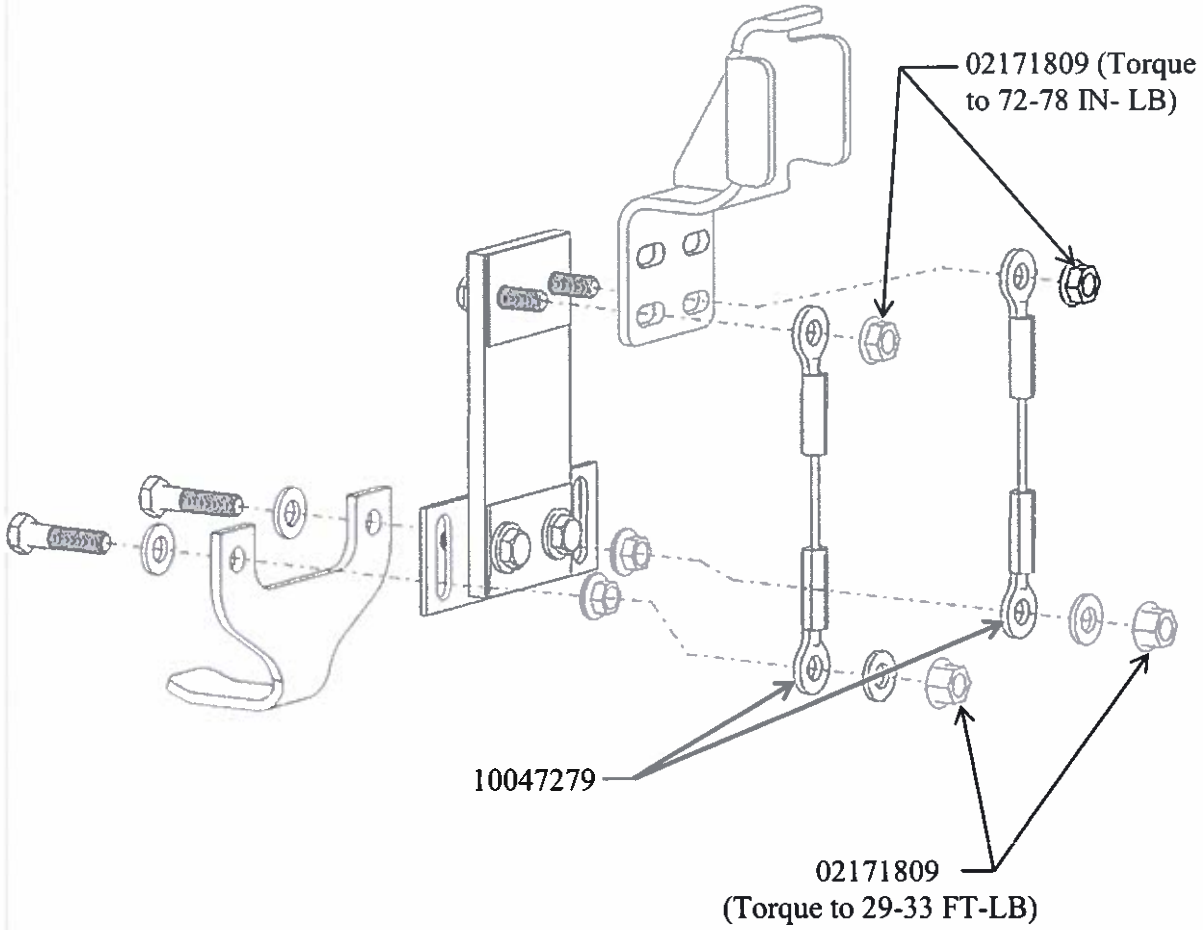
S I 6 Y J

S E R V I C E B U L L E T I N



Rear Engine Exhaust Cables

BULLETIN



Parts List		
Part #	Description	Qty
10047279	CABLE ASSY, SUPPORT,6.00",EXHAUST, T3RE	8
02171809	NUT,HEX HD,3/8-16,SM FLG LK	16

S I 6 Y J

S E R V I C E B U L L E T I N