



No.: 16 TS-9
March 31, 2016

TO: Service Locations
FROM: Service Systems Development
SUBJECT: **DD Platform High Pressure Fuel Lines**

NOTE: This document supersedes 14 TS-19.

ISSUE

With the exception of the return lines P-clip bolt on the two-filter system, the components in the images below, from the high pressure fuel pump to the fuel rail, are no longer reusable; they are **ONE-TIME-USE** only.



NOTICE:

DO NOT install any high pressure fuel line bolts and fittings using power tools. All bolts and fittings **MUST** be installed and torqued to specification using hand tools to prevent damage and possible fuel leakage.

 **WARNING:**

PERSONAL INJURY

All parts provided within this kit must be installed in the proper locations, and **MUST** be fastened to the specified torque. Failure to properly torque hardware/components will result in failure of a high pressure fuel feed line, resulting in possible fire and/or personal injury.

 **WARNING:**

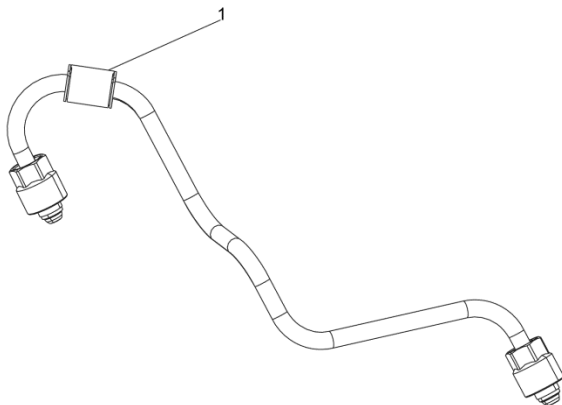
PERSONAL INJURY

All parts provided with this kit, and those they are replacing on the engine, function as a complete system and are single-use items. The old parts cannot be reused. Reusing parts or failing to use all new parts contained in the kit may result in the failure of high pressure fuel lines, possibly resulting in a fire.

REQUIRED ACTION

The high pressure fuel rail feed lines from the high pressure fuel pump to the fuel rail, mounting bracket, P-clips, vibration dampers, return lines p-clip (engine mounted three-filter fuel system only), mounting bracket bolts, P-clip bolts, vibration damper bolts, and return lines P-clip bolt (engine mounted three-filter fuel system only) **MUST** be replaced if one of these parts are removed from the engine during any repair.

All five kit numbers listed below have permanent vibration dampers (1) installed on the high pressure fuel rail feed lines.



d470305

Table 1 provides a list of the correct service kit part numbers.

Engine Type	EPA Vintage	Engine Mounted Fuel Filter System Type	Fuel Line Service Kit P/N
DD13	EPA07 and EPA10	Three Fuel Filter	A0000701632
	EPA10 and GHG14	Two Fuel Filter	A0000701232
	GHG17	Two Fuel Filter	A4710780510
DD15TC and DD16	EPA07 and EPA10	Three Fuel Filter	A0000701532
	EPA10 and GHG14	Two Fuel Filter	A0000701332
DD15AT and DD16	GHG14/GHG17 (DD15AT) and GHG17 (DD16)	Two Fuel Filter	A0000701432

Table 1 – DD Platform High Pressure Fuel Rail Feed Line Service Kits

ADDITIONAL INFORMATION

Reference Technical Service letter 13 TS-5 for additional information on the differences between the engine mounted two- and three-filter fuel system.

The return lines P-clip is not removed on the two-filter fuel system.
The return lines P-clip bolt is reused in the two-filter fuel system.

Refer to the appropriate section of Power Service Literature for removal and installation information.

Refer to video on DDCSN > Support > Multimedia > DD Platform > High Pressure Fuel Lines.

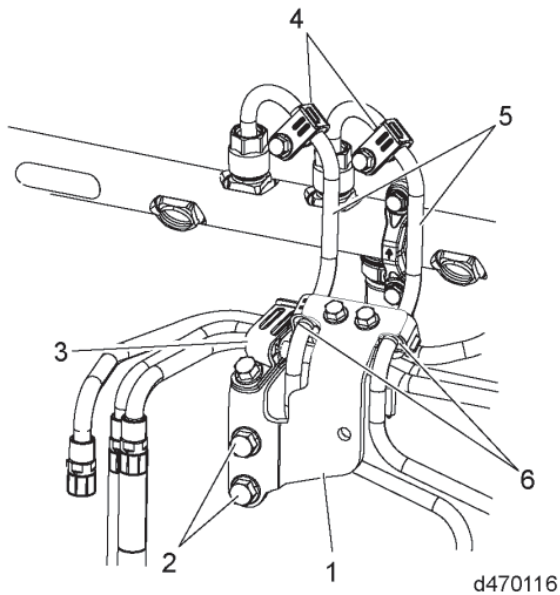
NOTICE:
DO NOT install any high pressure fuel line bolts and fittings using power tools. All bolts and fittings MUST be installed and torqued to specification using hand tools to prevent damage and possible fuel leakage.

Tape has been added to the outside of the service kit box to further highlight the need to follow all instructions. See Figure 1.



Figure 1 – Tape On Service Kit Box

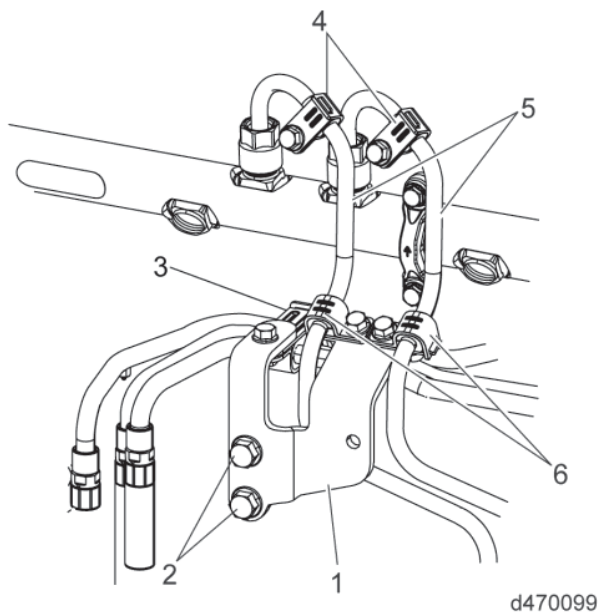
a) The graphic below illustrates the three-filter fuel system for DD15/16 engines with a serial number before 472901S0012796.



1. Mounting bracket
2. Mounting bracket bolts

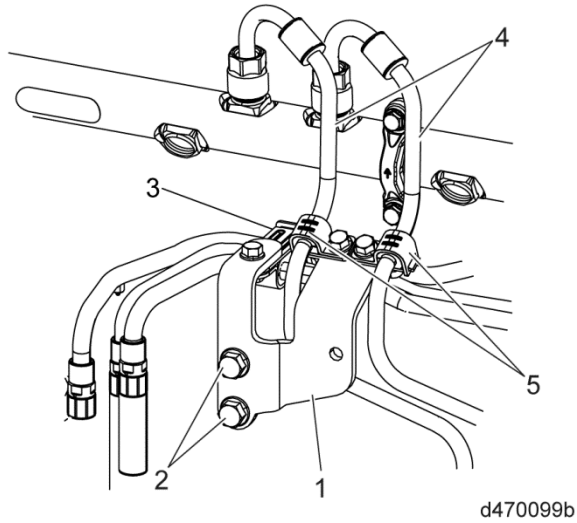
3. Return lines P-clip and bolt
4. Vibration dampers and bolts
5. High pressure fuel feed lines
6. Vibration dampers and bolts

b) The graphic below illustrates the three-filter fuel system for DD15/16 engines with a serial number after 472901S0012796 and three-filter fuel system for all the DD13 engines.



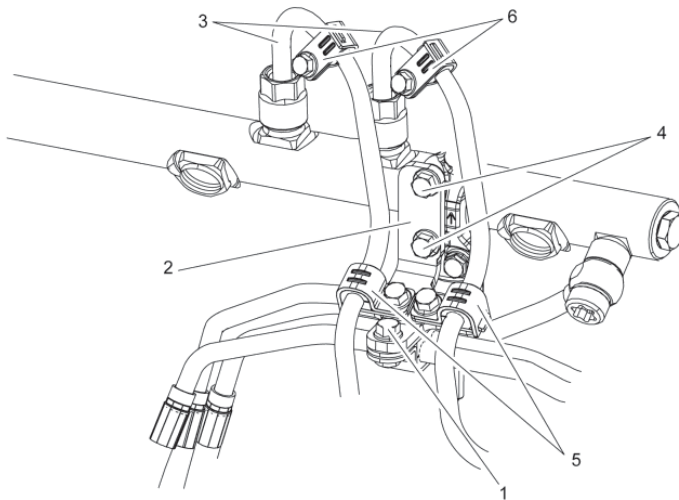
1. Mounting bracket
2. Mounting bracket bolts
3. Return lines P-clip and bolt
4. Vibration dampers and bolts
5. High pressure fuel rail feed lines
6. P-clips and bolts

c) The graphic below illustrates the three-filter fuel system for all DD engines with a serial number after 471901S0236004 for DD13 engines, 472901S0236308 for DD15/16 engines and all three-filter fuel system DD engines with a new high pressure fuel rail feed line service kit installed.



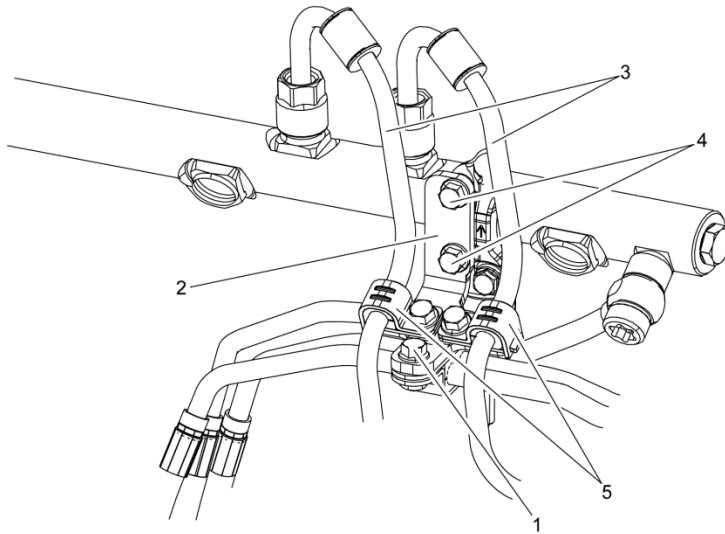
1. Mounting bracket
2. Mounting bracket bolts
3. Return lines P-clip and bolt
4. High pressure fuel rail feed lines
5. P-clips and bolts

d) The graphic below illustrates the two-filter KM59 GEN1 fuel system for the DD13/15/16 engines.



1. Return lines P-clip bolt (reused)
2. Mounting bracket
3. High pressure fuel rail feed lines
4. Mounting bracket bolts
5. P-clips and bolts
6. Vibration dampers and bolts

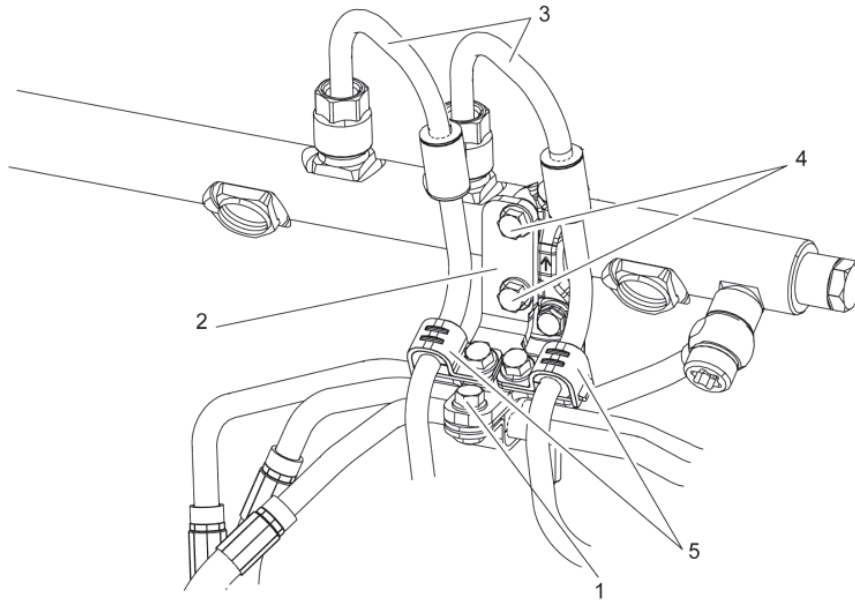
e) The graphic below illustrates the two-filter KM59 GEN1 fuel system for the DD13/15/16 engines with a serial number after 471901S0236004 for DD13 engines, 472901S0236308 for DD15/16 engines and all two-filter KM59 GEN1 fuel system DD13/15/16 engines with a new high pressure fuel rail feed line service kit installed.



d470160c

1. Return lines P-clip bolt (reused)
2. Mounting bracket
3. High pressure fuel rail feed lines
4. Mounting bracket bolts
5. P-clips and bolts

f) The graphic below illustrates the two-filter KM63 GEN2 fuel system for the DD13/DD15AT/DD16 engines.



d470251

1. Return lines P-clip bolt (reused)
2. Mounting bracket
3. High pressure fuel rail feed lines
4. Mounting bracket bolts
5. P-clips and bolts

CONTACT INFORMATION

Please contact the Detroit® Customer Support Center at 800-445-1980 or email csc@daimler.com if you have any questions.