

Service Update

43530 Rear Brake Line Contacts Chassis and Fuel Tank Harnesses



Reference Number: N16204353

Release Date: November 2016

Revision: 00

Attention: This service update includes vehicles in dealer inventory and customer vehicles that return to the dealership for any reason. This bulletin will expire at the end of the involved vehicle's New Vehicle Limited Warranty period.

Make	Model	Model Year		RPO	Description
		From	To		
Cadillac	XT5	2017	2017		

Involved vehicles are marked "open" on the Investigate Vehicle History screen in GM Global Warranty Management system. This site should always be checked to confirm vehicle involvement prior to beginning any required inspections and/or repairs.

Condition	On certain 2017 model year Cadillac XT5 vehicles, the rear brake pipes may come in contact with the chassis and fuel tank electrical harnesses. If this occurs, the brake pipe protective coating will wear and corrosion could shorten life expectancy. If a perforation hole resulted, brake lamp telltale and messaging would alert the driver of service required. Braking performance would be reduced under these conditions.
Correction	Clean and install a nylon twist sleeve in the areas of concern.

Parts

Quantity	Part Name	Part No.
4	Sleeve-Fuel Feed Hose	84220391
As Req'd (Submit as Net Item)	*Abrasion Resistant Wire Harness Tape	TS51036

* One 25 meter roll should service 25 vehicles. **Do not order from GMCCA.**

USA and Export Dealers: Contact Accurate Tape and Label, 14500 Jib St. Plymouth, MI. 48170. Ph. 734-451-7500.

Canadian Dealers: Contact National Hardware Sales Limited (NHS) at 1-877-877-0873.

Warranty Information

Labor Operation	Description	Labor Time	Trans. Type	Net Item
9102685	Install Fuel Feed Hose Sleeves	0.4	ZFAT	*

* The amount identified in "Net Item" should represent the actual sum total of the current GMCCA Dealer net price for TS 51036 Abrasion Resistant Wire Harness Tape needed to perform the required repairs, not to exceed \$0.70 USD, \$1.12 CAD. One 25 meter roll should service 25 vehicles.

Service Update

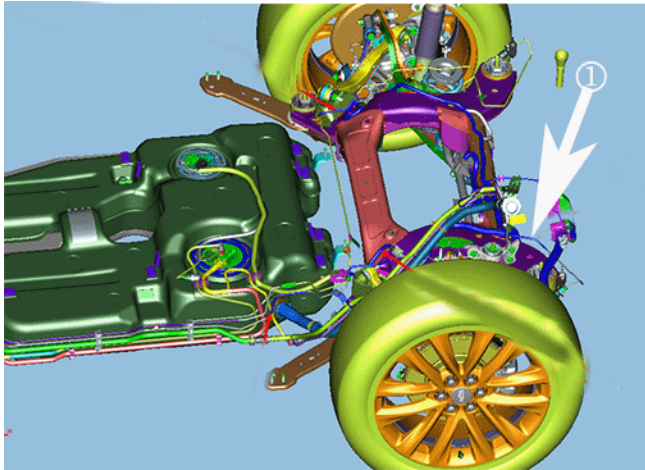
43530 Rear Brake Line Contacts Chassis and Fuel Tank Harnesses



Service Procedure

NOTE: When installing the sleeve, ensure the brake pipe is fully engaged with the protective sleeve. This may require manually opening the sleeve and installing it at a 90 degree angle to the pipe.

1. Raise the vehicle on a hoist. Refer to *Lifting and Jacking the Vehicle* in SI.



4603001

2. Locate the left rear brake pipe where it runs over the rear suspension cradle. Identify the area where the pipe may contact the chassis wiring harness (1).
3. Clean this section of the pipe with an isopropyl alcohol wipe.



4603376

4. Install the protective sleeve as shown. Ensure it is positioned to provide maximum abrasion protection from the chassis wiring harness.

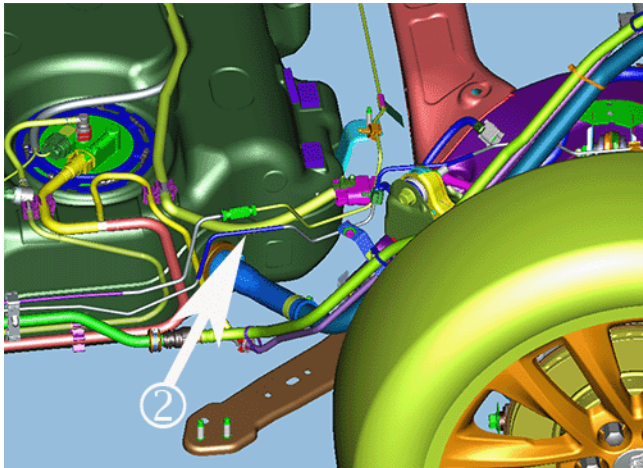
Service Update

43530 Rear Brake Line Contacts Chassis and Fuel Tank Harnesses



4903380

5. Wrap rear end of the sleeve with at least one and one half turns of TS51036 abrasion resistant wire harness tape as shown.



4603385

6. Locate the brake pipe in the left rear area of the vehicle near the fuel fill hose. Identify the area where the pipe may contact the fuel tank wiring harness (2).
7. Clean this section of the pipe with an isopropyl alcohol wipe.

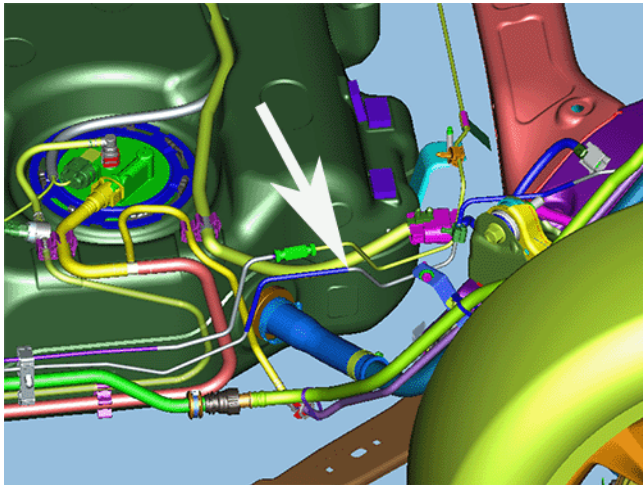


4603386

8. Install the protective sleeve. Ensure it is positioned to provide maximum abrasion protection from the fuel tank wiring harness.

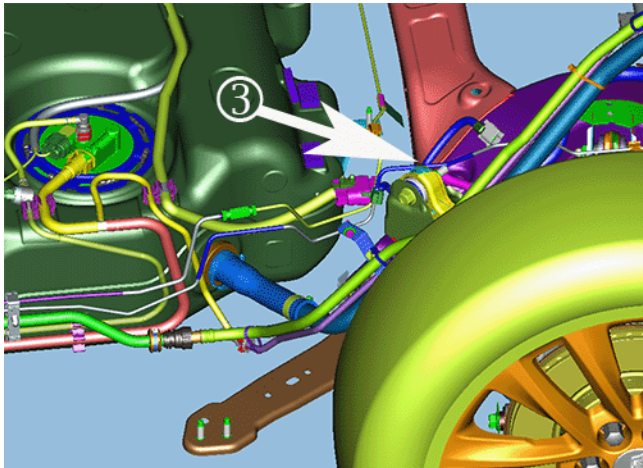
Service Update

43530 Rear Brake Line Contacts Chassis and Fuel Tank Harnesses



4617947

9. Wrap the rear end of the sleeve with at least one and one half turns of TS51036 abrasion resistant wire harness tape in the location shown.



4603393

10. Locate the brake pipe section near the left rear control arm upper front mount. Identify the area where the pipe may contact the chassis wiring harness (3).
11. Clean this section of the pipe with an isopropyl alcohol wipe.

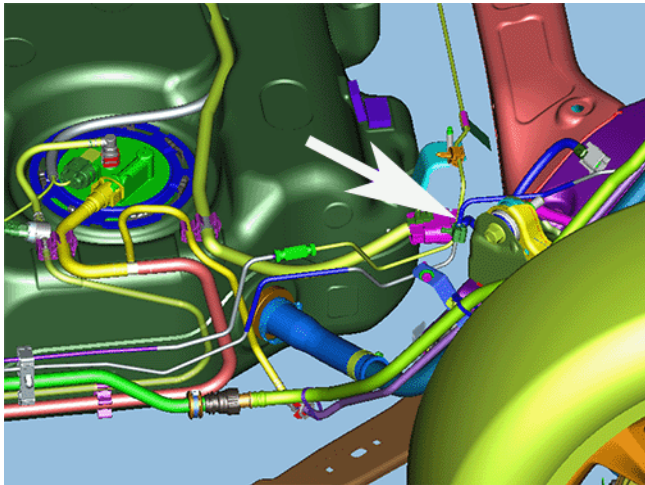


4603395

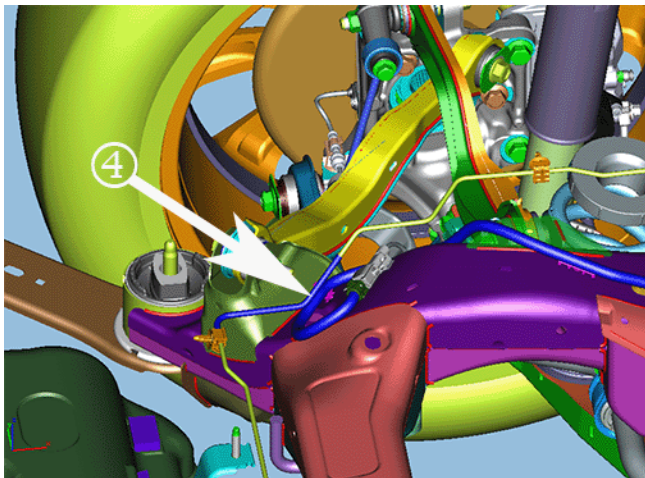
12. Install the protective sleeve. Ensure it is positioned to provide maximum abrasion protection from the chassis wiring harness.

Service Update

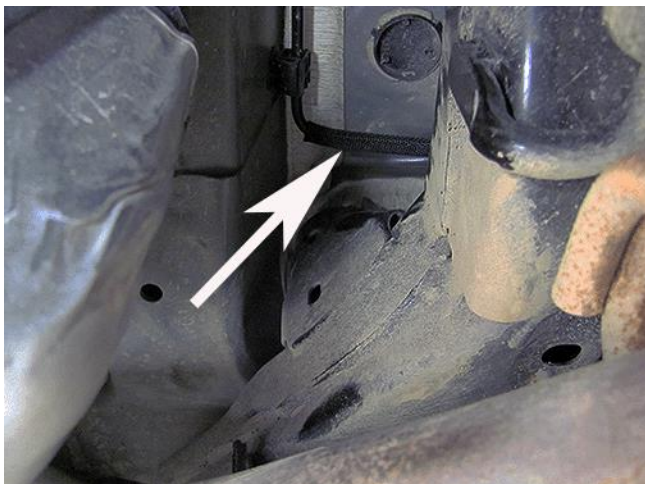
43530 Rear Brake Line Contacts Chassis and Fuel Tank Harnesses



13. Wrap the front end of the sleeve with at least one and one half turns of TS51036 abrasion resistant wire harness tape in the location shown.



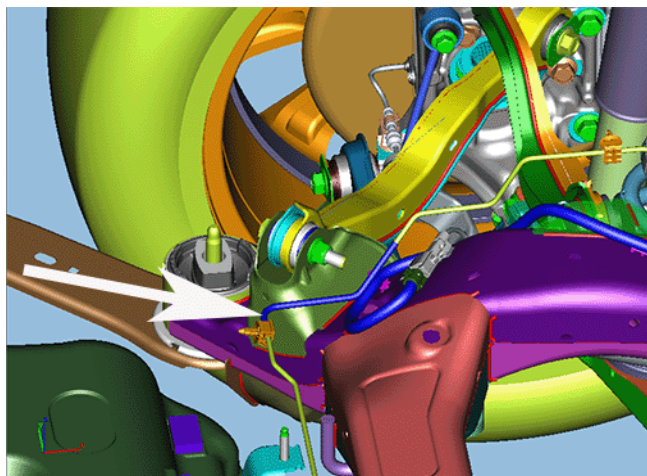
14. Locate the brake pipe section near the right rear control arm upper front mount. Identify the area where the pipe may contact the chassis wiring harness (4).
15. Clean this section of the pipe with an isopropyl alcohol wipe.



16. Install the protective sleeve. Ensure it is positioned to provide maximum abrasion protection from the chassis wiring harness.

Service Update

43530 Rear Brake Line Contacts Chassis and Fuel Tank Harnesses



4618068

17. Wrap the front end of the sleeve with at least one and one half turns of TS51036 abrasion resistant wire harness tape in the location shown.
18. Lower the vehicle. Refer to *Lifting and Jacking the Vehicle* in SI.

Dealer Responsibility

Whenever a vehicle subject to this service update enters your vehicle inventory, or is in your facility for service in the future, and the vehicle is still covered under the New Vehicle Limited Warranty, you must take the steps necessary to be sure the service update correction has been made before selling or releasing the vehicle.

All new, used, GM Certified Used, courtesy transportation vehicles, dealer shuttle vehicles, etc. in dealers' possession and subject to this bulletin must be held and inspected/repared per the service procedure of this bulletin before customers take possession of these vehicles. Involved vehicles must be held and not delivered to customers, dealer-traded, released to auction, used for demonstration, or any other purpose.

All GM Certified Used vehicles currently in the dealers' inventory within the Certified Pre-Owned Inventory System (CPOIS) will be de-certified and must be held and remedied per the service procedure in this bulletin. Upon submitting an accepted/paid warranty transaction in the Global Warranty Management (GWM) system, the vehicle can be re-certified for sale within the CPOIS system, or once again be used in the CTP program.



GLOBAL SAFETY FIELD INVESTIGATIONS
DCS4236
URGENT - DISTRIBUTE IMMEDIATELY

Date: November 2, 2016
Subject: 43530 - Service Update
Rear Brake Line Contacts Chassis and Fuel Tank Harnesses
Models: 2017 Cadillac XT5
To: All General Motors Dealers

General Motors is releasing Service Update 43530 today. The total number of U.S. vehicles involved is approximately 334. Please see the attached bulletin for details.

Global Warranty Management (GWM)

The Investigate Vehicle History (IVH) screen in the GWM system will be updated November 3, 2016. A list of involved vehicles in dealer new inventory is attached to this message. Please hold all warranty transactions until the VIN appears in IVH.

END OF MESSAGE
GLOBAL SAFETY FIELD INVESTIGATIONS