



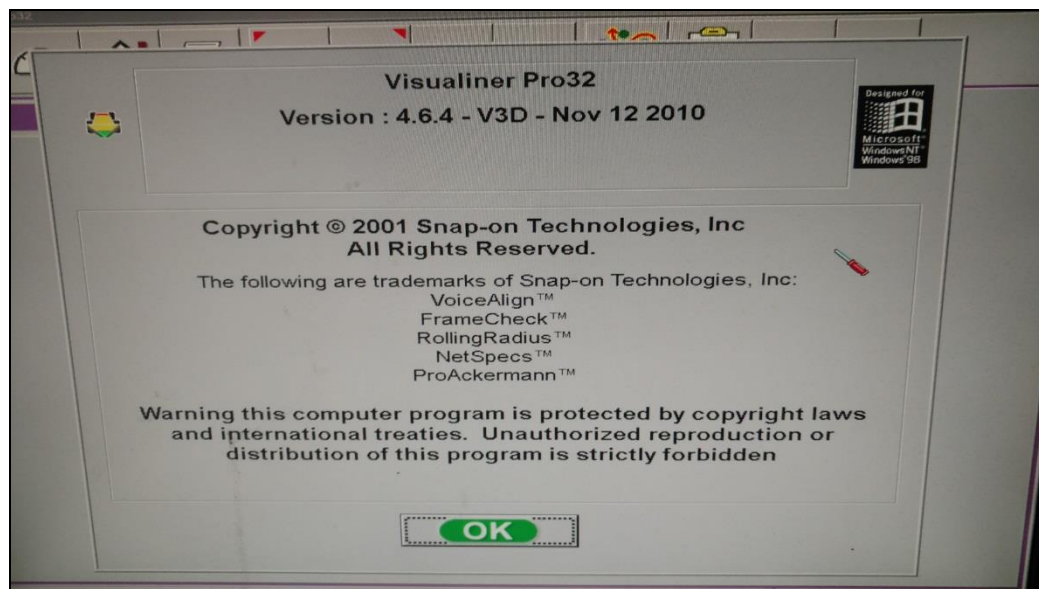
Tech Tips

TT 27-16-02

Date: December 2, 2016

2015-2017 All Models equipped with Adaptive Cruise Control - Performing ACC Calibration using John Bean Equipment

- The VAS701-001 uses the Pro42 software. The VAS6331, VAS1934B and VAS6421 use the Pro32 software.
- When using the Pro32 software, the version must be 4.12 or higher. Versions prior to this will not have any driver assist adjustment procedures.
- To update to a higher software level, the software version has to be 4.7 or higher. If the software version is 4.6 or lower, the software will need to be updated to 4.7 first and then updated to the current available software. If version 4.6 is installed, contact your SnapOn/John Bean field rep.





Service Information

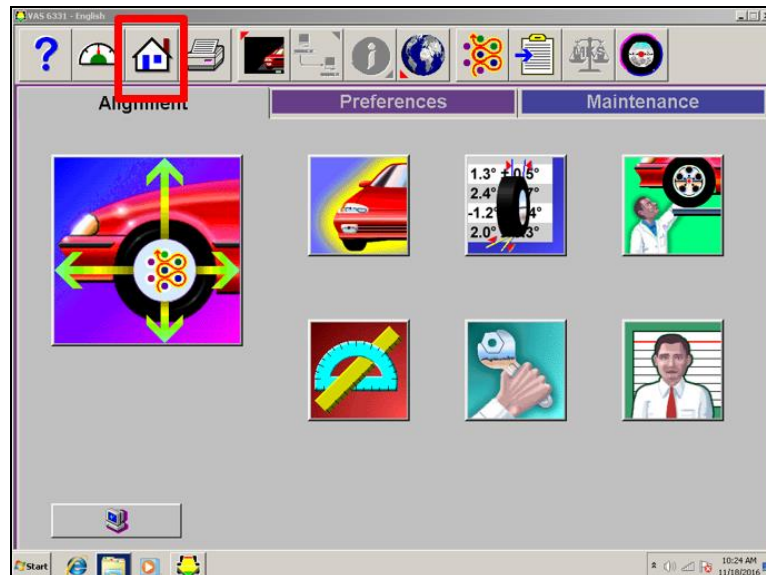
- All versions of the Pro42 software should have the ability to perform the ACC calibration.
- On either system, only ONE remote camera is used. For the VAS701-001, the camera can be mounted on the right or left. For the VAS6331, VAS1934B or VAS 6421 the camera has to be mounted to the VAS6430 fixture on the right side only.
- VAS701-001 (Pro42) automatically detects available calibrations based on the vehicle and asks which you want to use. In the VAS6331, VAS1934B or VAS6421 (Pro32), the correct calibration must be selected.
- For the VAS701-001 (Pro42), Select calibration from the left menu when on the home screen. You can see it in the screen shot just below the label “VAG driver Assistance feature”. This performs calibration without alignment.





Service Information

- For the VAS6331, VAS1934B or VAS6421 (Pro32) the procedure is the same except, the calibration camera must be mounted on the right side. Pro32 procedure is shown in the following, the Pro42 version will be very similar.
- Select the home screen icon to start. This will bring you to this screen:



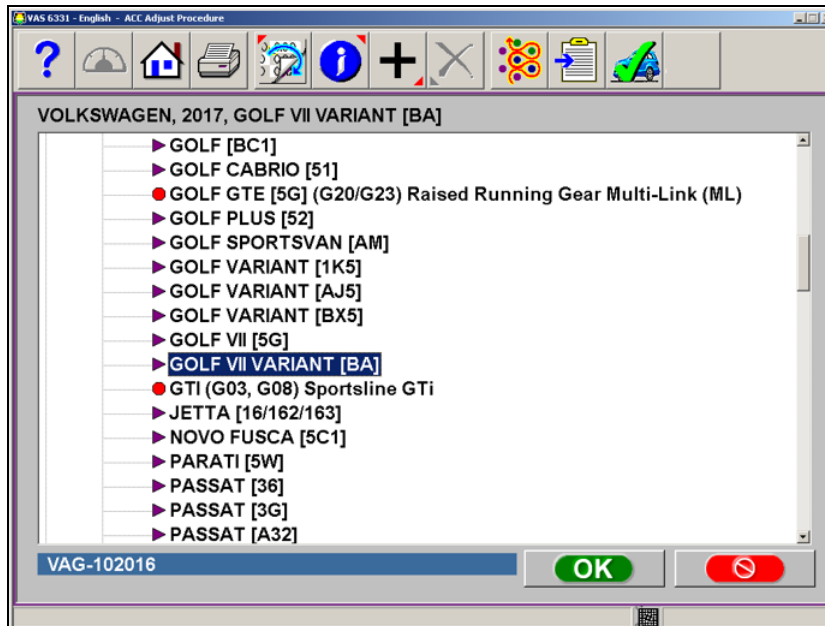
- Select the ACC/ADR icon.



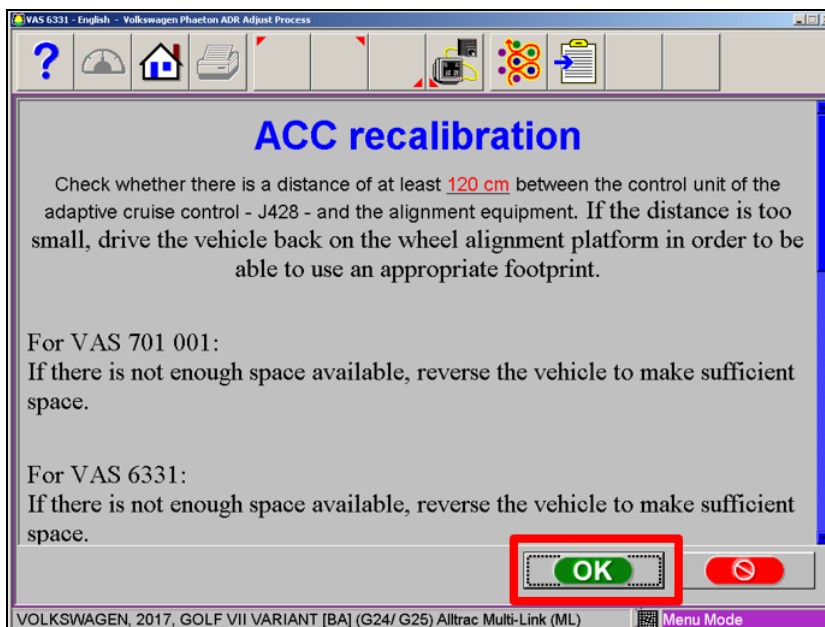


Service Information

- Select the appropriate vehicle.



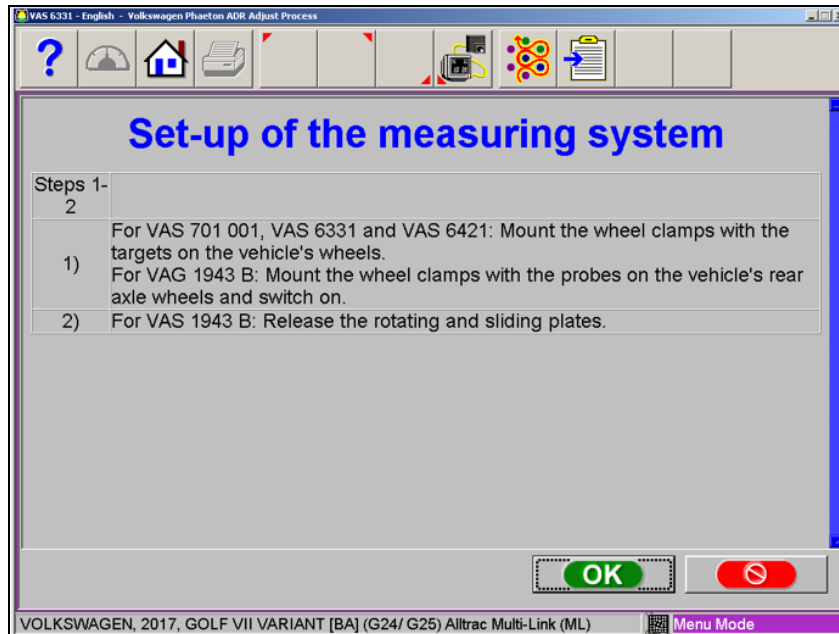
- Read through the notes and continue by selecting “OK”.



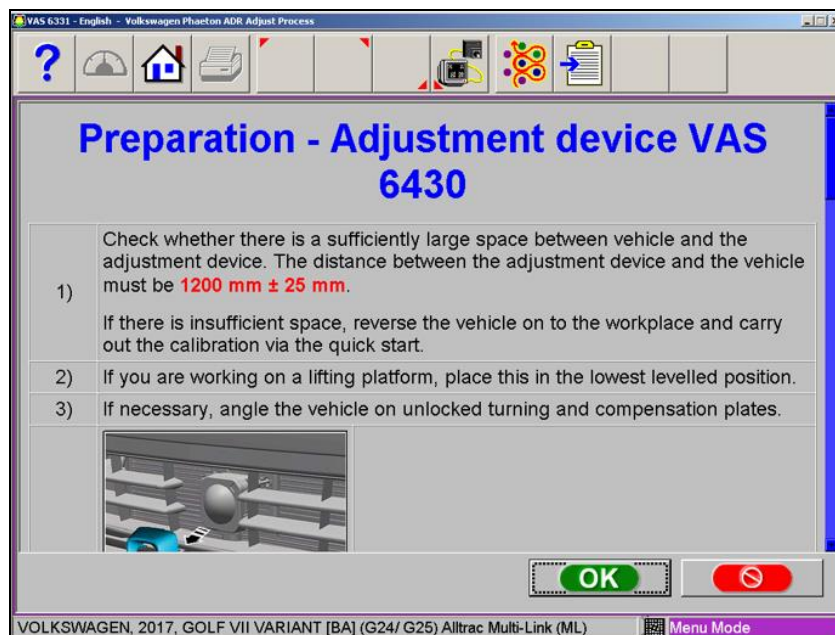


Service Information

- Install all 4 targets on the vehicle's wheels.



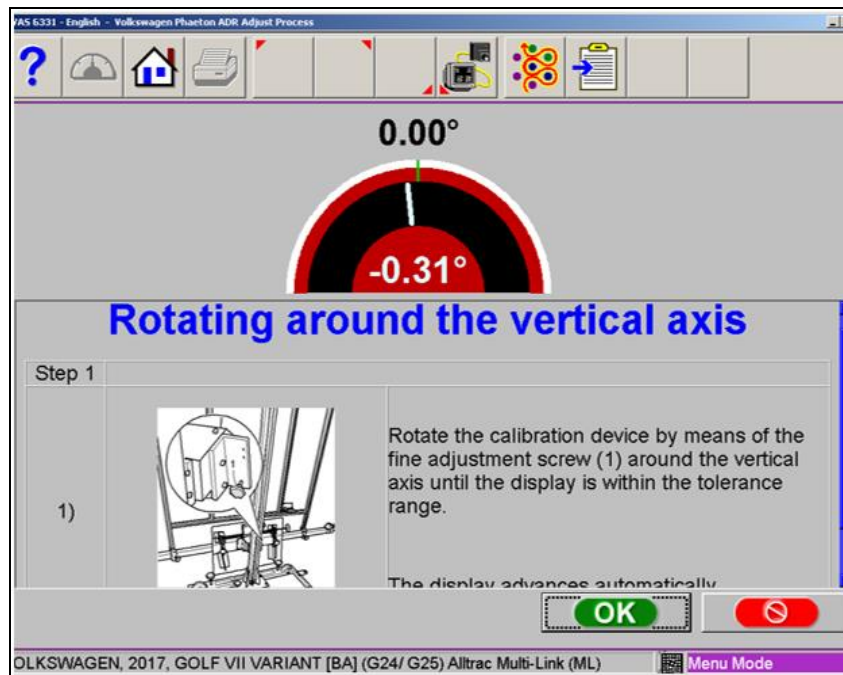
- Set up the VAS6430 as outlined in the on screen instructions or the ELSA repair manual. **Do not move the vehicle afterwards.**



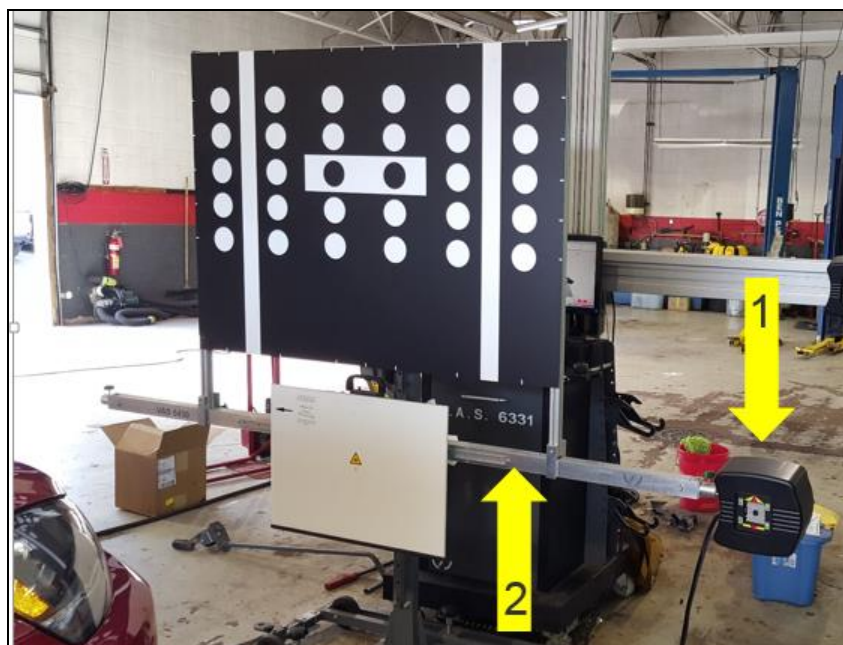


Service Information

- Adjust the horizontal bar with remote camera attached around the vertical axis by using the adjusting screws shown in photo 1) until the adjustment is within specification.



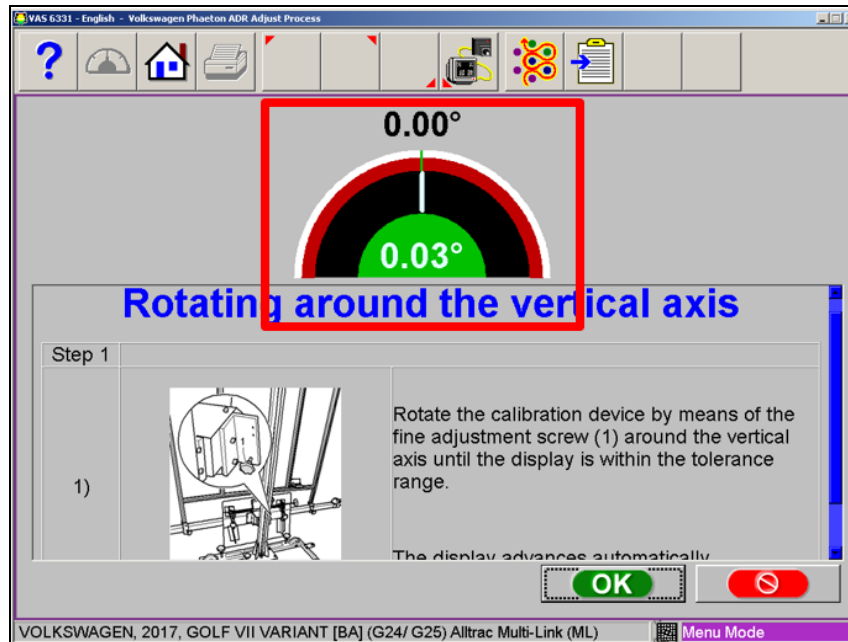
- Note that only one remote camera is installed <1>. Horizontal bar <2> is what is being rotated around the vertical axis using the adjusting screws.





Service Information

- Alignment of the horizontal bar is now within specification.



- Verify the laser is in the center of the sensor. Perform any final adjustments of the VAS6430. Ensure the laser is centered in the radar sensor and the VAS6430 is level. Now the calibration can be performed using the scan tool.

