

WG42 - Replacing Coolant Reservoir (Workshop Campaign)

Important: **Critical Warning** — This campaign includes steps where control unit(s) in the vehicle will be programmed with the PIWIS Tester. The vehicle voltage must be maintained between 13.5 volts and 14.5 volts during this programming. Failure to maintain this voltage could result in damaged control unit(s). Damage caused by inadequate voltage during programming is not a warrantable defect. The technician must verify the actual vehicle voltage in the PIWIS Tester before starting the campaign and also document the actual voltage on the repair order. Please refer to Equipment Information EQ1401 for a list of suitable battery chargers/power supplies which should be used to maintain vehicle voltage.

Model Year: **2017**

Model line: **911 (991)**

Subject: **Coolant reservoir**

Issue: **There is a possibility that the float in the coolant reservoir can stick at the lowest position due to unfavourable tolerances.**

If this happens, the warning message "Refill coolant immediately! Do not drive on" will be activated in the instrument cluster when the engine is at operating temperature.

Remedial action: Replace coolant reservoir.

Affected Vehicles: Only the vehicles assigned to the campaign (see also PIWIS Vehicle information). This campaign affects 2,668 vehicles in North America.

Required parts and materials

Part No.:	Part No.	Designation – Use	Qty.
	000 043 303 98	⇒ Reservoir – Cooling system	1 ea.
	900 123 007 30	⇒ Sealing ring, A14 x 18 – Coolant drain plug	2 ea.

Materials:	Part No.	Designation – Use	Qty.
	000 043 305 16	⇒ Antifreeze, 20-litre container – Cooling system	As much as required (approx. 2 litres required per vehicle)
	000 043 205 93	⇒ Klüberplus Gel grease – O-rings, hoses	As much as required (approx. 5 grams required per vehicle)

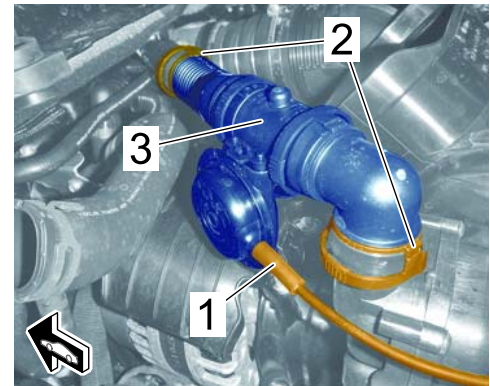
Required tools

- Tools:
- Torque wrench, 2 - 10 Nm (1.5 - 7.5 ftlb.), e.g. **V.A.G 1783 - Torque wrench, 2-10 Nm (1.5-7.5 ftlb.)**
 - Torque wrench, 6 - 50 Nm (4.5 - 37 ftlb.), e.g. **V.A.G 1331 - Torque wrench, 6-50 Nm (4.5-37 ftlb.)**
 - Suitable pliers for spring band clamps, e.g. **VAS 6856 - Spring band clamp pliers**
 - **9696 - Filling device**
 - **9696/1 - Cap**
 - **VAS 6096/2 - Vacuum pump**

Preparatory work

- Procedure:
- 1 Raise the vehicle on a lifting platform ⇒ *Workshop Manual '4X00IN Lifting the vehicle'*.
 - 2 Drain coolant at the engine ⇒ *Workshop Manual '193817 Draining and filling coolant'*.
 - 3 **Only for Cabriolet vehicles:**
Move convertible top into service position ⇒ *Workshop Manual '6101IN Convertible-top service position (Cabriolet)'*.
 - 4 Remove engine-compartment blower ⇒ *Workshop Manual '198119 Removing and installing engine-compartment blower'*.
 - 5 Remove both tail lights ⇒ *Workshop Manual '943119 Removing and installing tail lights'*.
 - 6 Remove rear spoiler ⇒ *Workshop Manual '665819 Removing and installing rear spoiler (Turbo)'*.

- 7 Remove sound channel ⇒ *Sound channel for acoustic simulator -3-* with vacuum unit for acoustic simulator.
 - 7.1 Disconnect vacuum hose ⇒ *Sound channel for acoustic simulator -1-* at the vacuum unit.
 - 7.2 Release plug-in couplings ⇒ *Sound channel for acoustic simulator -2-* and pull sound channel off the connections.
 - 7.3 Remove sound channel ⇒ *Sound channel for acoustic simulator -3-* together with the vacuum unit.



Sound channel for acoustic simulator

Replace coolant reservoir

- Procedure:
- 1 Remove coolant reservoir ⇒ *Workshop Manual '194019 Removing and installing reservoir'*.
 - 2 Remove bleeder valve from the **new** reservoir.

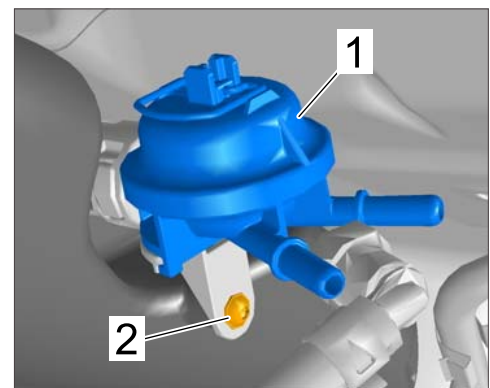


Information

The new coolant reservoir is supplied with a bleeder valve already fitted.

To prevent damage to the components during installation due to the tight installation space, the bleeder valve must first be removed from the new reservoir and then fitted again after you have installed the reservoir.

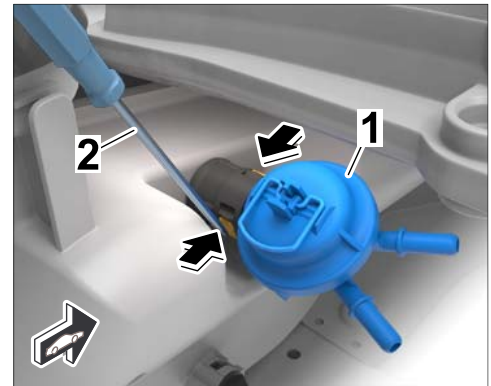
- 2.1 Loosen and unscrew fastening screw ⇒ *Bleeder valve mounting -2-* for the bleeder valve ⇒ *Bleeder valve mounting -1-*.



Bleeder valve mounting

- 2.2 Release locking lugs ⇒ *Removing bleeder valve -arrows-* at the quick connector and pull the bleeder valve ⇒ *Removing bleeder valve -1-* off the reservoir.
Use a suitable tool ⇒ *Removing bleeder valve -2-* to release the lower locking lug.

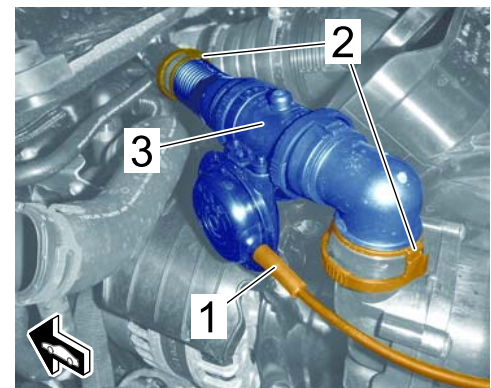
- 3 Install new coolant reservoir.
When doing so, **make sure** to fit the **new bleeder valve** you removed earlier back on the reservoir.
For instructions, see ⇒ *Workshop Manual '194019 Removing and installing reservoir'*.



Removing bleeder valve

Concluding work

- Procedure:
- 1 Install sound channel ⇒ *Sound channel for acoustic simulator -3-* with vacuum unit for acoustic simulator.
 - 1.1 Push on sound channel ⇒ *Sound channel for acoustic simulator -3-* at the plug-in couplings ⇒ *Sound channel for acoustic simulator -2-* until they engage securely.
 - 1.2 Fit vacuum hose ⇒ *Sound channel for acoustic simulator -1-* as far as it will go on the vacuum unit.



Sound channel for acoustic simulator

- 2 Install rear spoiler ⇒ *Workshop Manual '665819 Removing and installing rear spoiler (Turbo)'*.
- 3 Install both tail lights ⇒ *Workshop Manual '943119 Removing and installing tail lights'*.
- 4 Install engine-compartment blower ⇒ *Workshop Manual '198119 Removing and installing engine-compartment blower'*.
- 5 Fill and bleed the cooling system ⇒ *Workshop Manual '193817 Draining and filling coolant'*.
- 6 **Only for Cabriolet vehicles:**
Move convertible top out of service position.
⇒ *Workshop Manual '61011N Convertible-top service position (Cabriolet)'*
- 7 Remove the vehicle from the lifting platform.
- 8 Enter the campaign in the Warranty and Maintenance booklet.

References: ⇒ *Workshop Manual '193817 Draining and filling coolant'*

- ⇒ Workshop Manual '194019 Removing and installing reservoir'
- ⇒ Workshop Manual '198119 Removing and installing engine-compartment blower'
- ⇒ Workshop Manual '4X00IN Lifting the vehicle'
- ⇒ Workshop Manual '6101IN Convertible-top service position (Cabriolet)'
- ⇒ Workshop Manual '665819 Removing and installing rear spoiler (Turbo)'
- ⇒ Workshop Manual '943119 Removing and installing tail light'

Warranty processing



Information

The specified working times were determined specifically for carrying out this campaign and include all required preliminary and subsequent work.
 The working times may differ from the working times published in the Labour Operation List in PIWIS.

Information: **Scope 1 – Scope 3: Not relevant** for this **vehicle type**.

Scope 4: **Replace coolant reservoir**

- **Only relevant** for vehicles with **body shape Coupé**

Working time:

Replacing coolant reservoir	Labor time: 266 TU
-----------------------------	---------------------------

Includes:

- Raising and lowering the vehicle
- Draining and filling coolant
- Removing and installing engine-compartment blower
- Removing and installing tail light at the left and right
- Removing and installing rear spoiler
- Removing and installing hose for acoustic simulator

Parts required:

000 043 303 98	Reservoir	1 ea.
900 123 007 30	Sealing ring, A14 x 18	2 ea.

Required materials:

000 043 305 16	Antifreeze (20-litre container)	0.1 ea. (= approx. 2 litres)
000 043 205 93	Klüberplus Gel grease (100g tube)	0.05 ea. (= approx. 5 g)

Invoicing: ⇒ **Damage Code WG42 66 000, Repair Code 2**

Scope 5: **Replace coolant reservoir**

- **Only relevant** for vehicles with **body shape Cabriolet**

Working time:

Replacing coolant reservoir

Labor time: **272 TU**

Includes:

- Raising and lowering the vehicle
- Moving convertible top into service position
- Draining and filling coolant
- Removing and installing engine-compartment blower
- Removing and installing tail light at the left and right
- Removing and installing rear spoiler
- Removing and installing hose for acoustic simulator

Parts required:

000 043 303 98	Reservoir	1 ea.
900 123 007 30	Sealing ring, A14 x 18	2 ea.

Required materials:

000 043 305 16	Antifreeze (20-litre container)	0.1 ea. (= approx. 2 litres)
000 043 205 93	Klüberplus Gel grease (100g tube)	0.05 ea. (= approx. 5 g)

Invoicing: ⇒ **Damage Code WG42 66 000, Repair Code 2**

Important Notice: Technical Bulletins issued by Porsche Cars North America, Inc. are intended only for use by professional automotive technicians who have attended Porsche service training courses. They are written to inform those technicians of conditions that may occur on some Porsche vehicles, or to provide information that could assist in the proper servicing of a vehicle. Porsche special tools may be necessary in order to perform certain operations identified in these bulletins. Use of tools and procedures other than those Porsche recommends in these bulletins may be detrimental to the safe operation of your vehicle, and may endanger the people working on it. Properly trained Porsche technicians have the equipment, tools, safety instructions, and know-how to do the job properly and safely. If a particular condition is described, do not assume that the bulletin applies to your vehicle, or that your vehicle will have that condition. See your authorized Porsche Dealer for the latest information about whether a particular technical bulletin applies to your vehicle. Part numbers listed in these bulletins are for reference only. Always check with your authorized Porsche dealer to verify the current and correct part numbers. The work procedures updated electronically in the Porsche PIWIS diagnostic and testing device take precedence and, in the event of a discrepancy, the work procedures in the PIWIS Tester are the ones that must be followed.

© Porsche Cars North America, Inc.

Dealership	Service Manager	Shop Foreman	Service Technician
Distribution			
Routing	Asst. Manager	Warranty Admin.	Service Technician

Dr. Ing. h.c. F. Porsche AG is the owner of numerous trademarks, both registered and unregistered, including without limitation the Porsche Crest®, Porsche®, Boxster®, Carrera®, Cayenne®, Cayman®, Macan®, Panamera®, Speedster®, Spyder®, 918 Spyder®, Tiptronic®, VarioCam®, PCM®, PDK®, 911®, RS®, 4S®, FOUR, UNCOMPROMISED®, and the model numbers and the distinctive shapes of the Porsche automobiles such as, the federally registered 911 and Boxster automobiles. The third party trademarks contained herein are the properties of their respective owners. Porsche Cars North America, Inc. believes the specifications to be correct at the time of printing. Specifications, performance standards, standard equipment, options, and other elements shown are subject to change without notice. Some options may be unavailable when a car is built. Some vehicles may be shown with non-U.S. equipment. The information contained herein is for internal authorized Porsche dealer use only and cannot be copied or distributed. Porsche recommends seat belt usage and observance of traffic laws at all times.

Printed in the USA