

PREVOST

Instruction Sheet

IS-14085

AC Copper Pipes Chaffing at Engine Bulkhead

MATERIAL

Kit #IS-14085 includes the following parts:

Part No.	Description	Qty
455012	Plate, AC hose	1
455013	Protector, AC Hose	1
455014	Protector, AC Hose	1
502634	Screw M6-1.0X6	5
504021	Hose Clamp SS/CS 0.6875" – 1.50"	1
504022	Hose Clamp SS/CS 0.75" – 1.75"	1
IS-14085	Instruction Sheet (EN)	1
FI-14085	Instruction Sheet (FR)	1

Other parts that may be required:

Part No.	Description	Qty
684517	Simson ISR 70-03 Adhesive (Grey)	1

NOTE

Material can be obtained through regular channels.

PROCEDURE



DANGER

Park vehicle safely, apply parking brake, stop engine. Prior to working on the vehicle, set the ignition switch to the OFF position and trip the main circuit breakers equipped with a trip button. On Commuter type vehicles, set the battery master switch (master cut-out) to the OFF position.

1. In the battery compartment, locate the AC pipes and holding plate at the top left side of the compartment bulkhead.
2. Remove the five screws holding the plate to the bulkhead (battery compartment side).
3. If present, remove pipe protectors, hose clamps or supports installed around the AC pipes in the engine compartment (Figure 1).

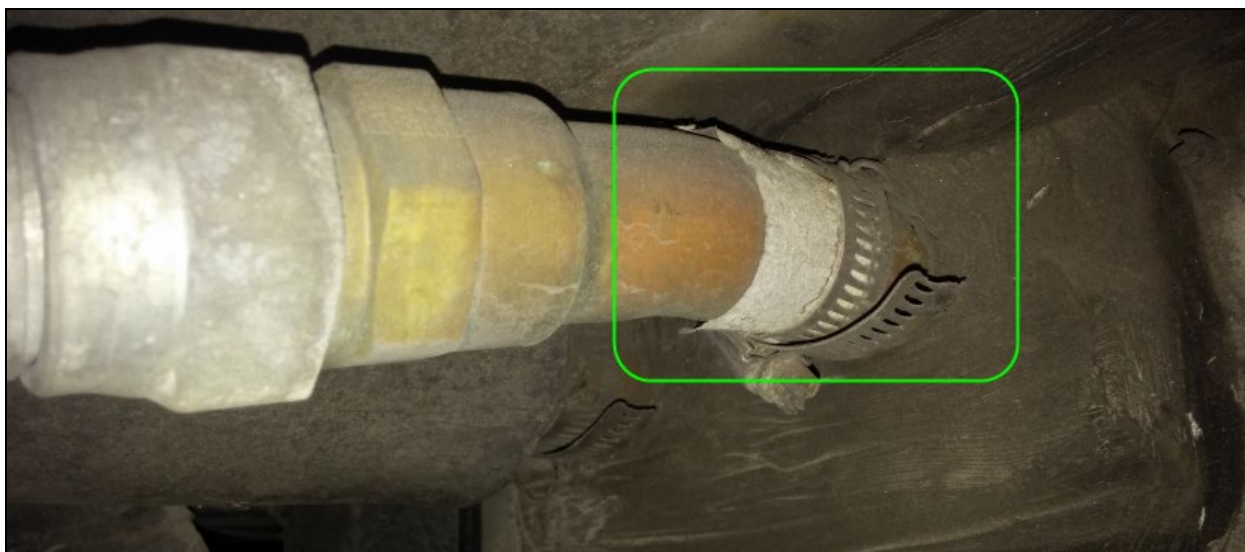


Figure 1

4. In the engine compartment, remove about two inches (51mm) of the largest AC pipe insulating material (if so equipped) (Figure 2).

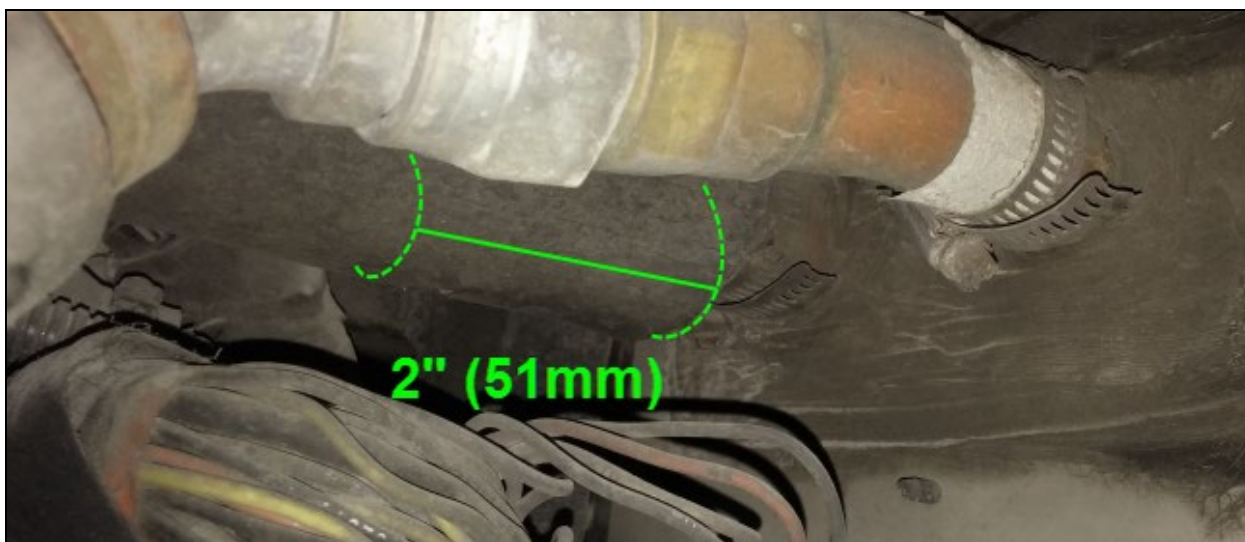


Figure 2

5. With the help of a small pry-bar or flat screwdriver, pry the plate and remove the support plate from the vehicle bulkhead (it may be necessary to cut and scrape the adhesive with a sharp blade or a knife on both sides of the bulkhead to remove the plate).
6. Remove remaining adhesive from both sides of the bulkhead and AC pipes.
7. Clean both sides of the bulkhead and pipes with a suitable residue-free cleaner/degreaser or silicone remover.
8. Put Simson ISR 70-03 Adhesive around the new plate perimeter (battery compartment side of the bulkhead).
9. Position the new # 455012 plate on the bulkhead.
10. Using the five supplied # 502634 screws, fasten the plate to the bulkhead (put a slight amount of Simson ISR 70-03 around the screw heads to improve sealing). Once installed and fastened, slight adhesive overflow should be visible on both sides around the plate perimeter if not, add Simson adhesive around the edges.
11. Put a bead of Simson ISR 70-03 Adhesive on the top edge of the plate and around the AC pipes perimeter (completely fill all gaps to ensure a watertight installation between the engine and battery compartment) (Figure 3).

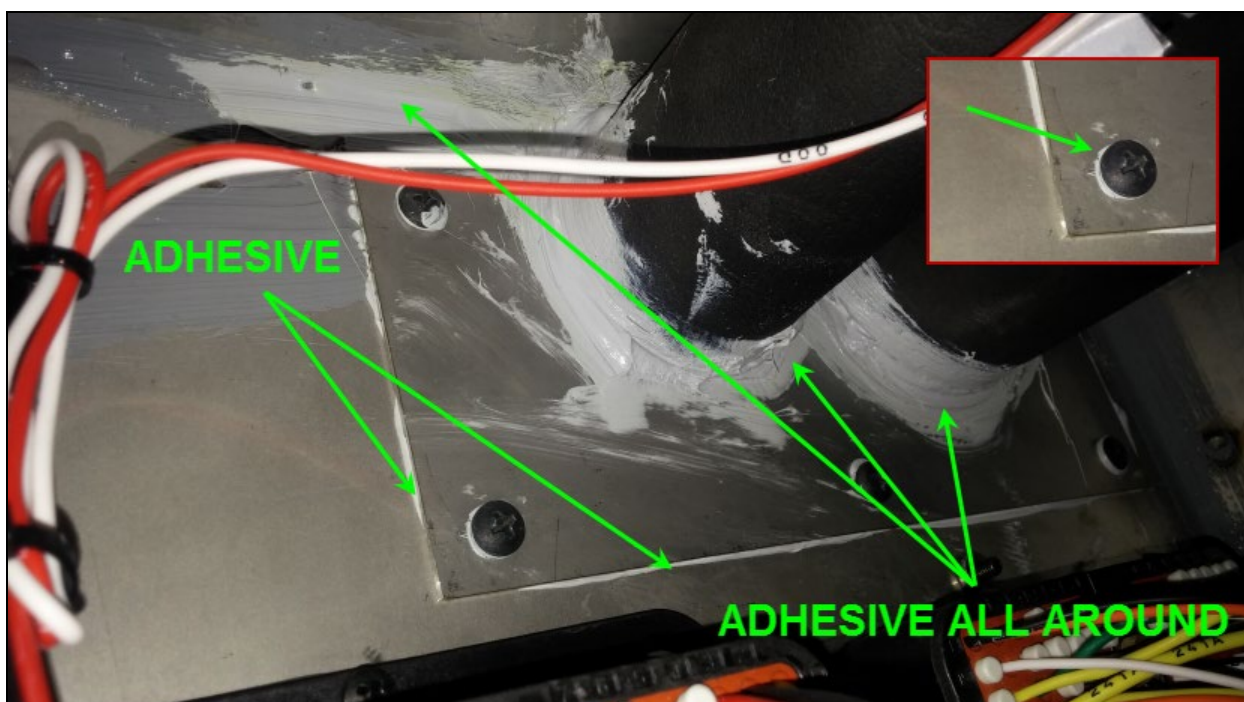
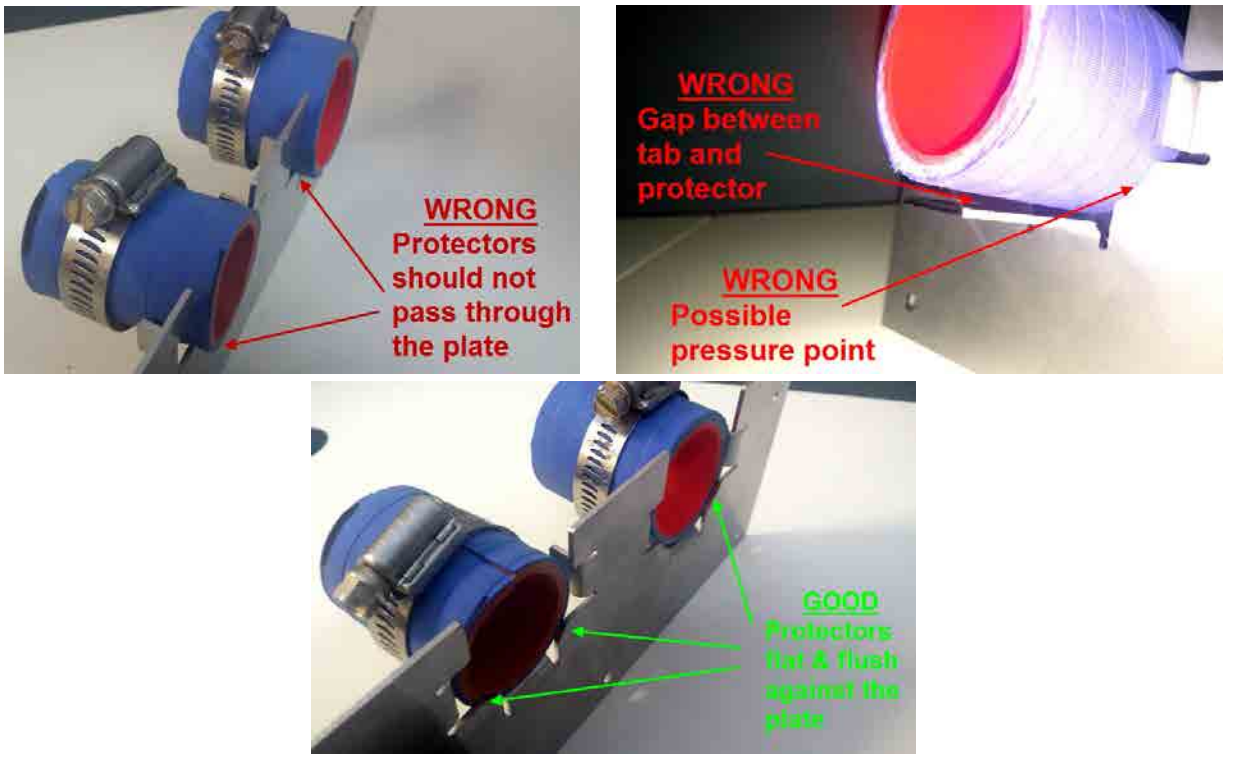


Figure 3

12. In the engine compartment, slide the two supplied protectors (# 455013 and 455014) around the pipes (open end of protectors must be facing up).

NOTE Position the two protectors flat against the bulkhead and plate tabs.

Protectors must not pass through the bulkhead plate and must sit flat against the holding tabs



13. Install the two supplied hose clamps (# 504021 and 504022) around the protectors to secure them to the mounting tabs of the plate (Figure 4).



Figure 4

14. Double check that all gaps around the plate and the pipes are completely sealed by the adhesive spread and/or add adhesive as required to complete the installation.

PARTS / WASTE DISPOSAL

Discard waste according to applicable environmental regulations (Municipal/State[Prov.]/ Federal)