

TECH TIP

Group:	O-GENERAL
Bulletin No:	TT-15-031
Issue Date:	1-28-2016

VEHICLE SPEED AND CRUISE SETTINGS

SUBJECT VEHICLES: 11MY-16MY Conventional Trucks (238, 258, 268, or 338) and 12MY-16MY COE (Cab over Engine) Trucks (195, 195h)

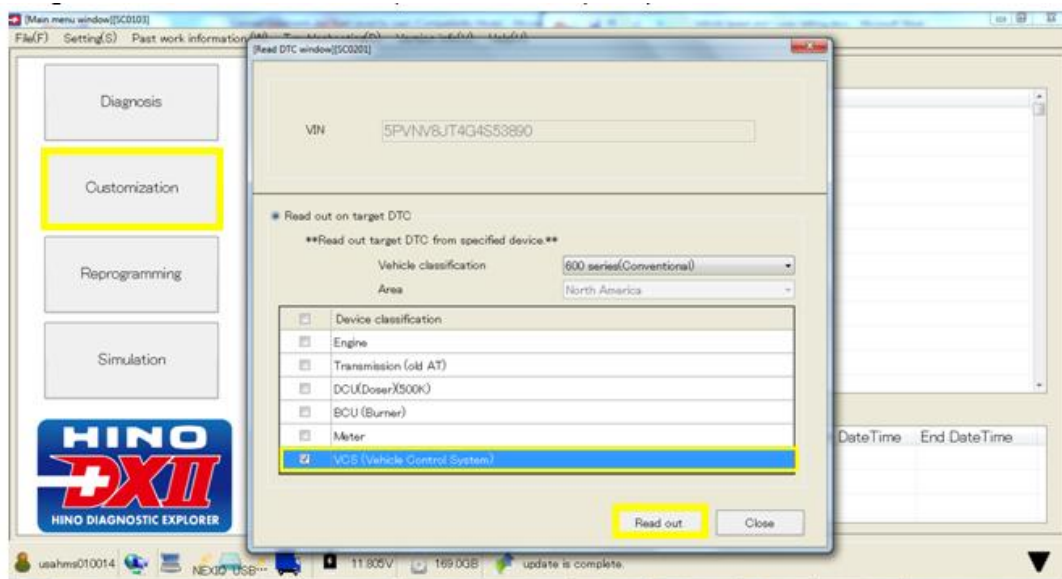
Note: This tech tip is provided as technical information and is not authorization for a warrantable repair.

OVERVIEW:

The tech tip below is to set or change road speed on a Hino Conventional or COE truck. The below procedure and screen shots were taken from a Conventional truck. Make sure to select 600 series for a Conventional and 300 series for a COE.

REPAIR PROCEDURE:

1. Using DX2, check the vehicle control system (VCS), meter and select "Read out".

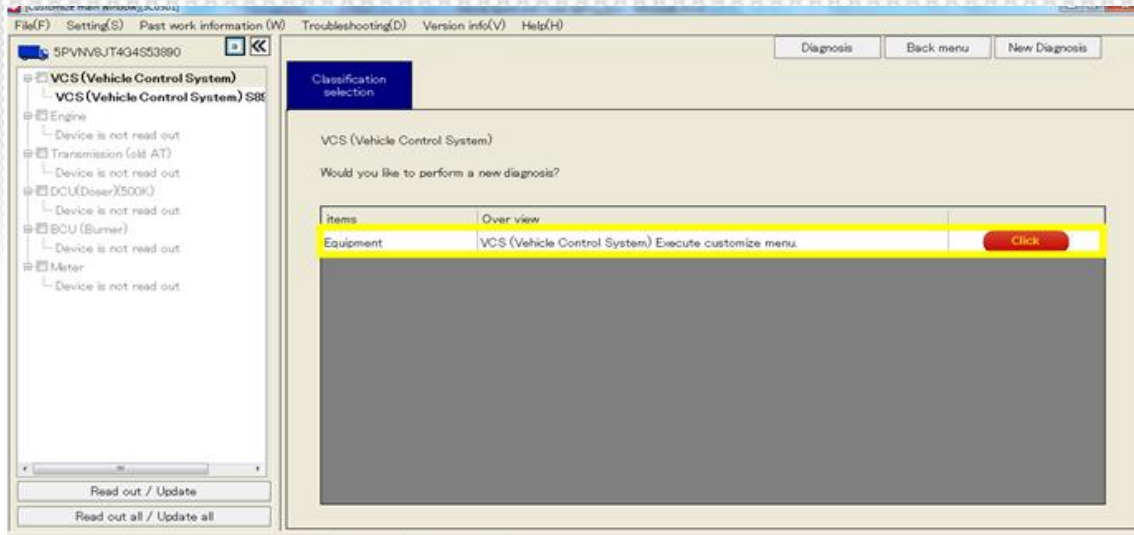


A Toyota Group Company

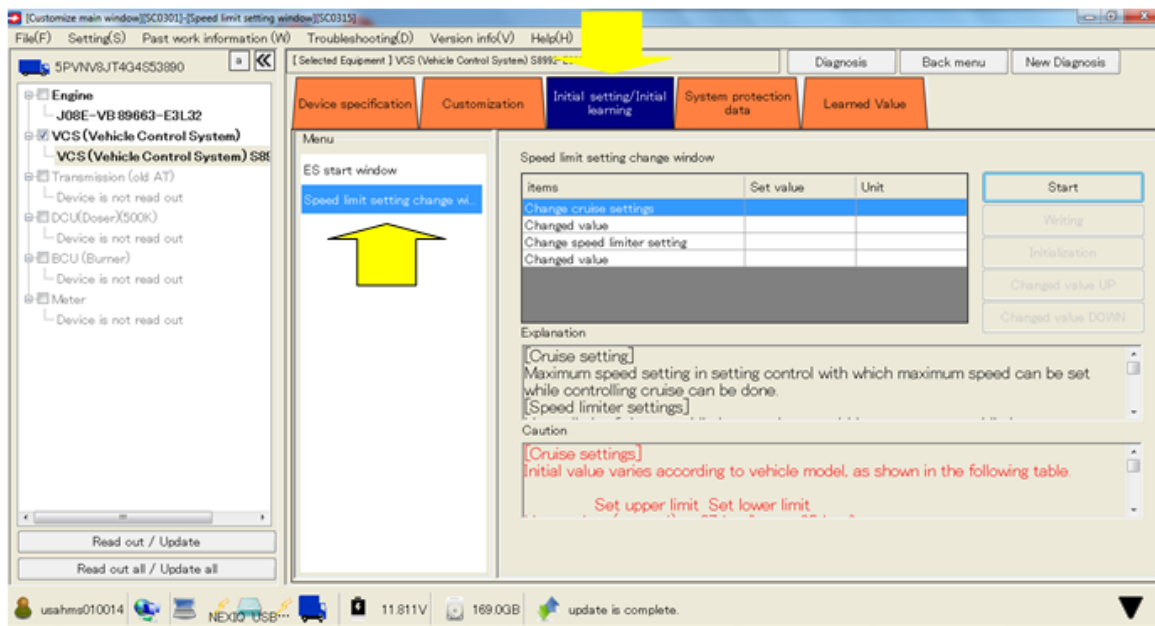
TECH TIP

Group:	0-GENERAL
Bulletin No:	TT-15-031
Issue Date:	1-28-2016

2. Click on the VCS (Vehicle Control System) Execute Customize Menu shown below.



3. Select "Initial Setting/Initial Learning" tab and then the Speed limit setting change in the Menu column.



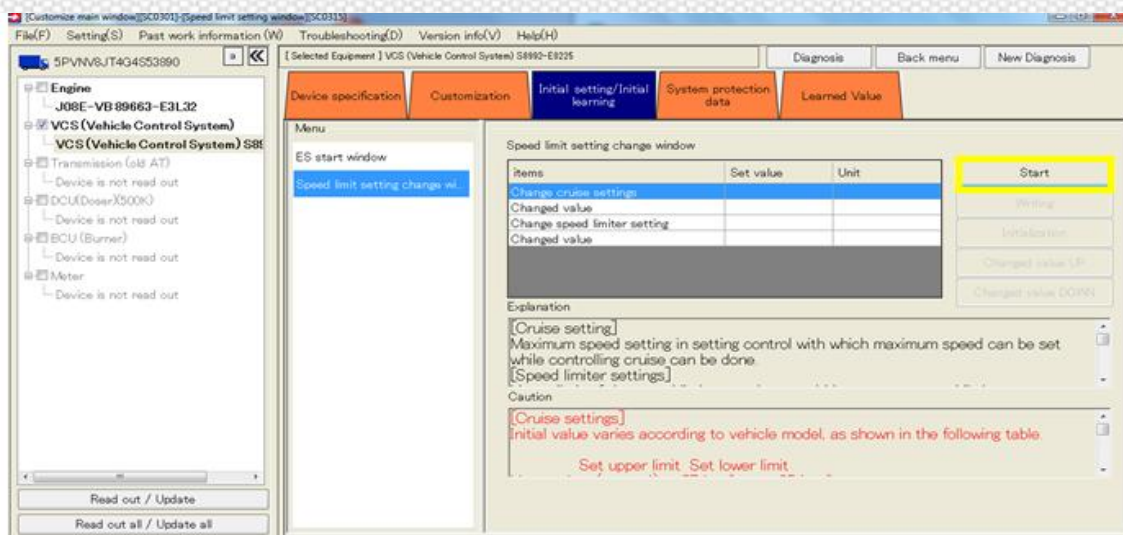
A Toyota Group Company

TECH TIP

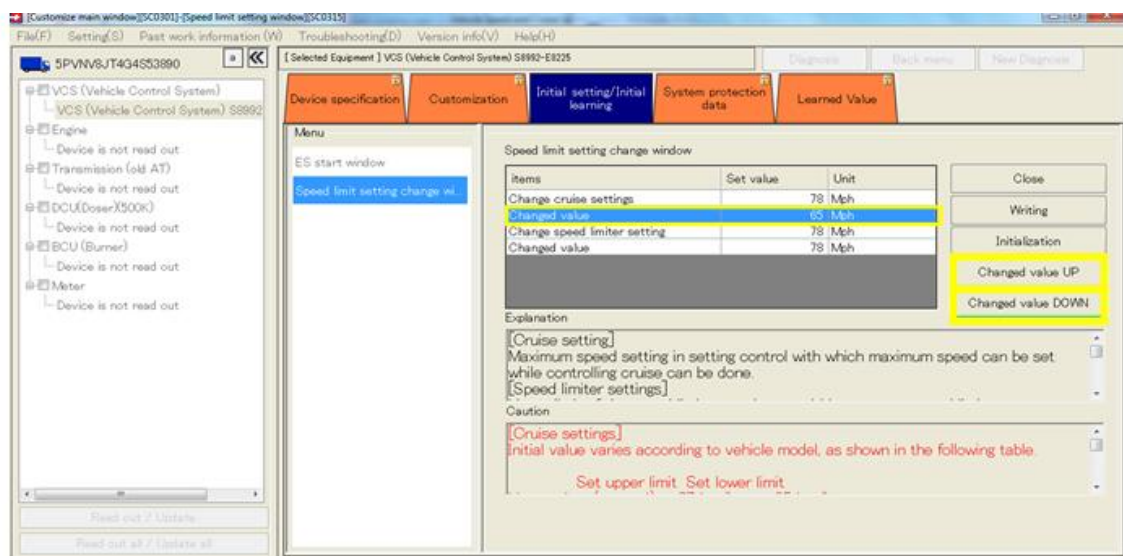
Group:	0-GENERAL
Bulletin No:	TT-15-031
Issue Date:	1-28-2016

NOTE: There are no values displayed in the Set Value or Unit columns until start is pressed.

4. Click “Start” in the Speed limit setting change window.



5. Highlight “Changed Value” under change cruise settings and use the “Changed Value UP/Down” buttons to select the desired Max cruise speed.

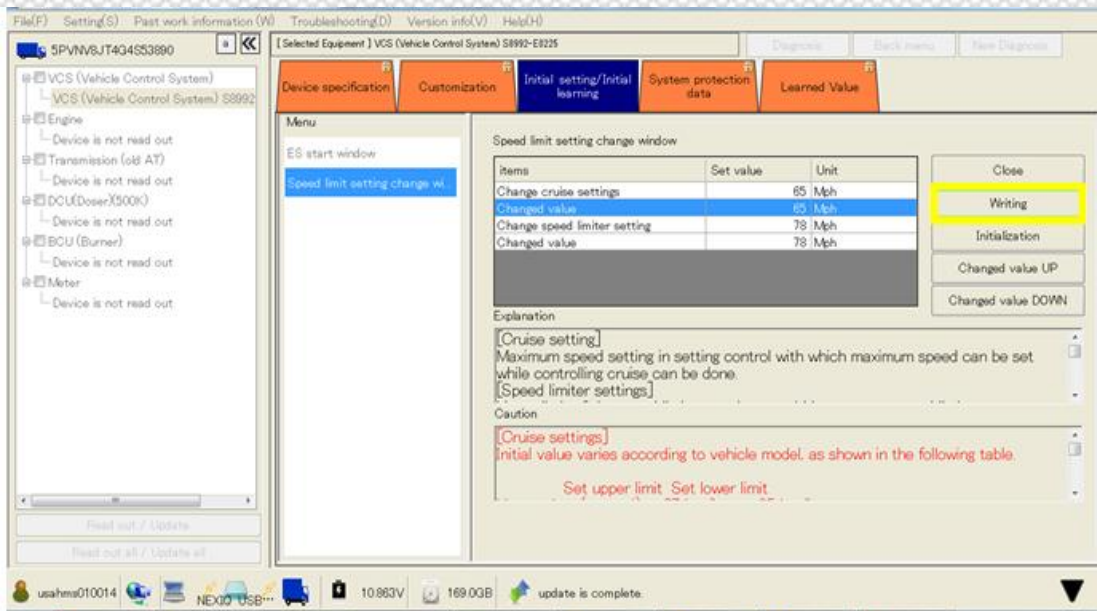


A Toyota Group Company

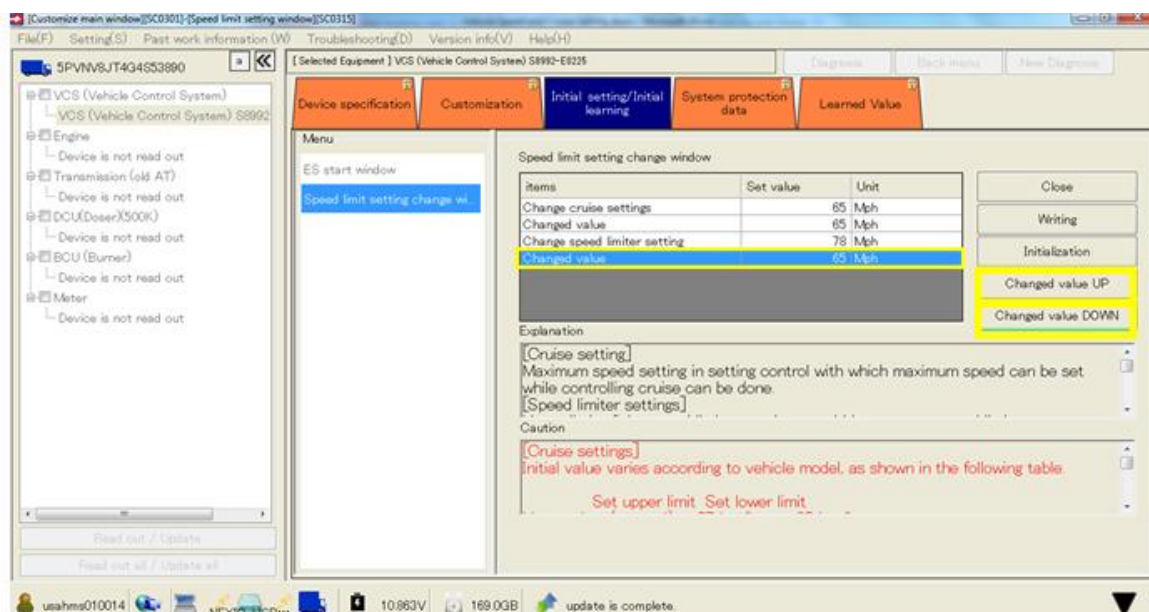
TECH TIP

Group:	0-GENERAL
Bulletin No:	TT-15-031
Issue Date:	1-28-2016

6. Click “Writing” to write the new value.



7. Highlight the “Changed Value” under change speed limiter setting and use the “Changed Value UP/Down” buttons to select the desired Max vehicle speed.



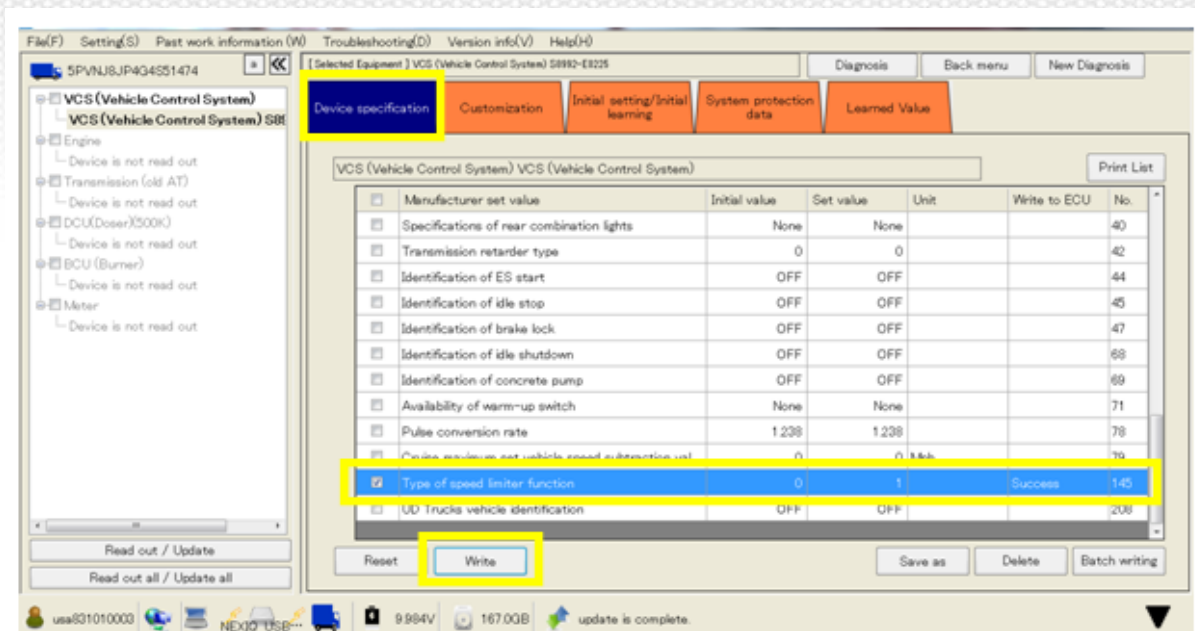
A Toyota Group Company

TECH TIP

Group:	0-GENERAL
Bulletin No:	TT-15-031
Issue Date:	1-28-2016

8. NOTE: If the numbers don't change on a Conventional truck, use the value list for all speed limiter function types.

Select the "Device Specification" tab and then the "Type of Speed limit setting Function No. 145" in the Menu column. Input the set value number using the chart below and click "Write". Click "OK" on the reprogram confirmation window and it will show success.



The single digit 0, 6, 9 are the speed limiter function type set value options. The values represented here are what the maximum settings speed can be, using the function types in the chart below. Use the tire manufacturer's website or tire specification sheet to confirm the exact tire size and using the Chassis workshop manual, (Electrical Equipment Section) find the chart depending on transmission, (automatic or manual) to confirm the rear axle ratio.

Setting Number	Maximum Settings Speed
0	78 Cruise and (No Speed Limit) Road
6	78 Cruise and 70 Road
9	78 Cruise and 65 Road

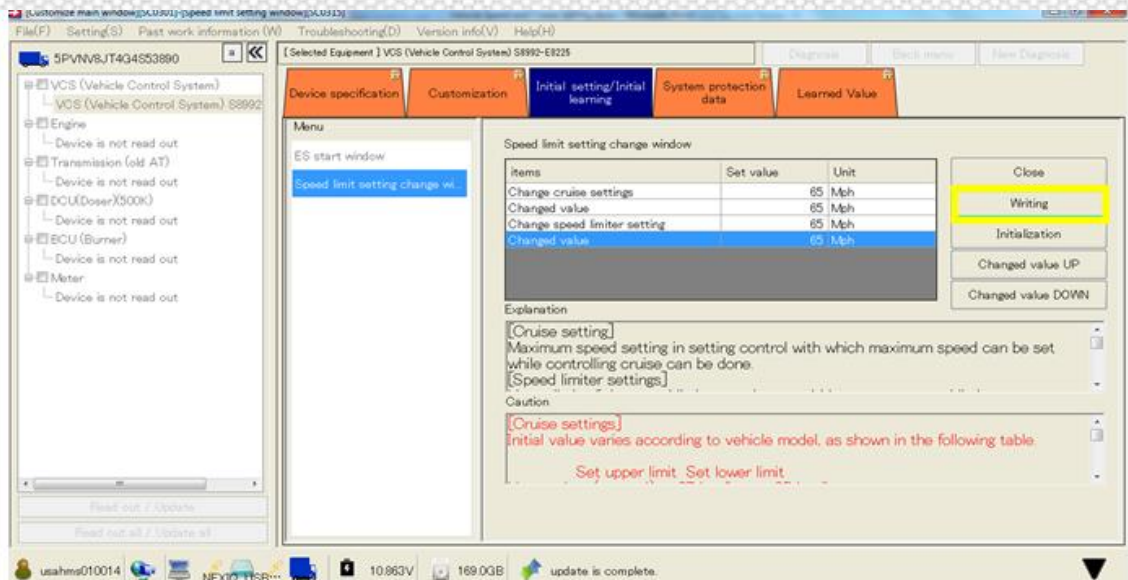


A Toyota Group Company

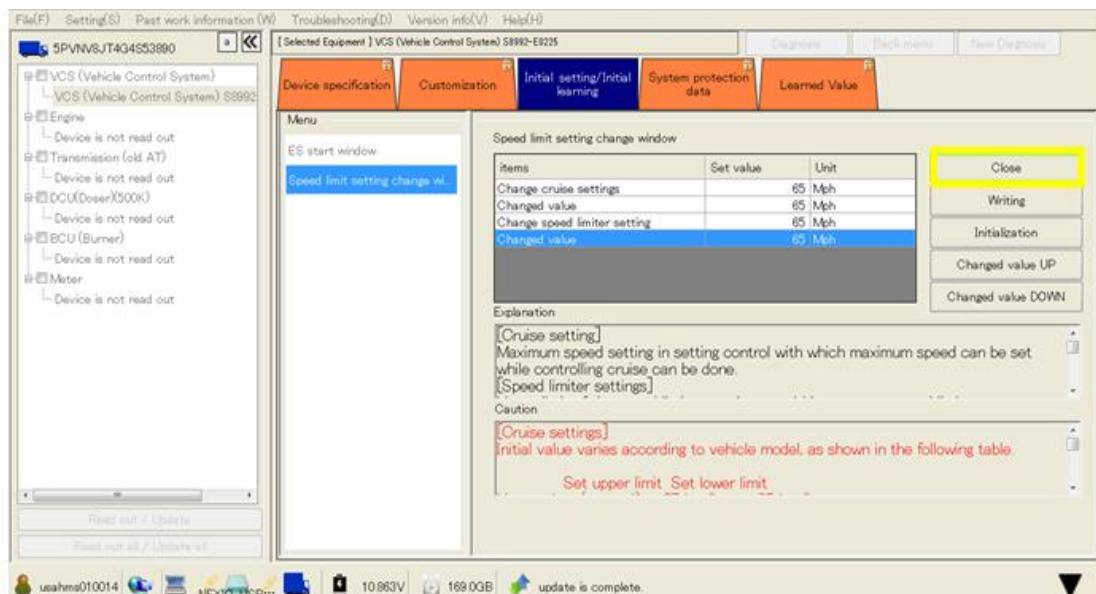
TECH TIP

Group:	0-GENERAL
Bulletin No:	TT-15-031
Issue Date:	1-28-2016

9. Click “Writing” to write the new value. Once it’s completed, the values should reflect the values selected.



10. Once complete, click “Close”.

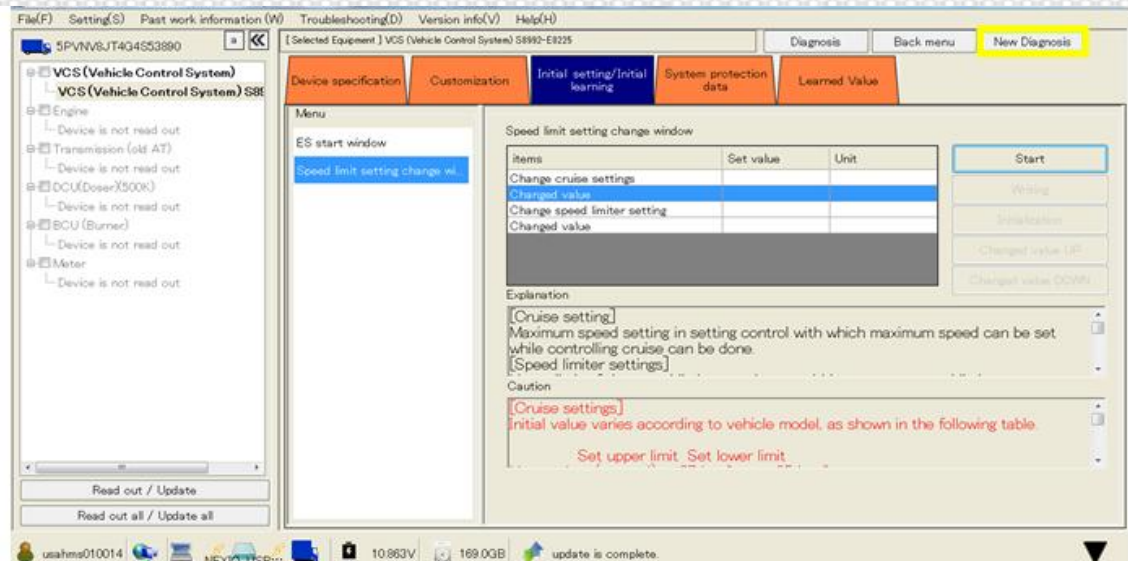


A Toyota Group Company

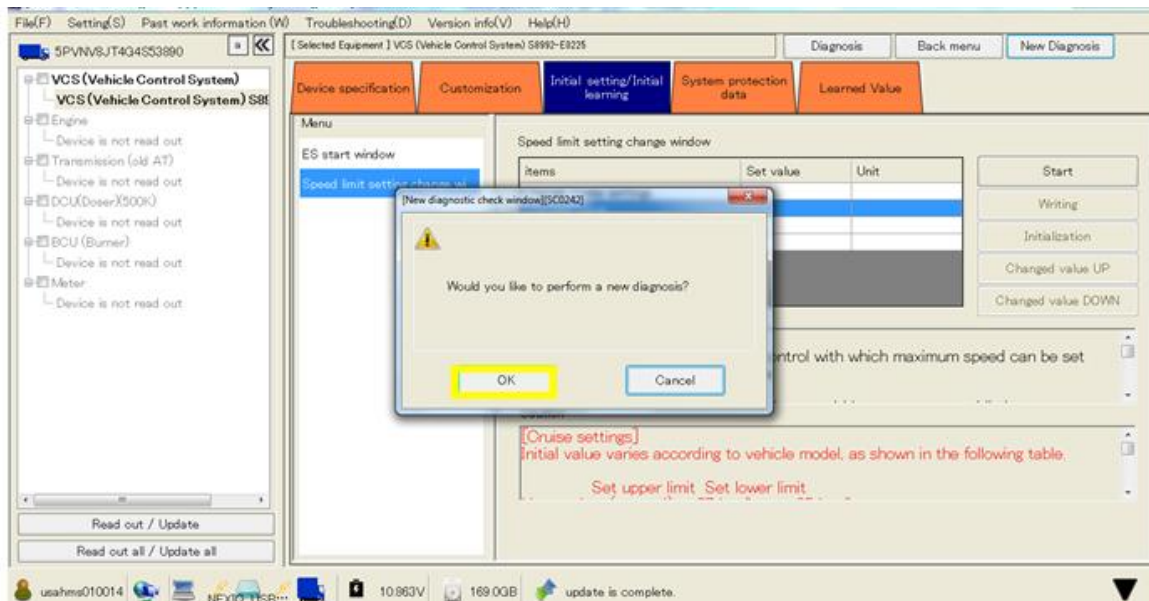
TECH TIP

Group:	0-GENERAL
Bulletin No:	TT-15-031
Issue Date:	1-28-2016

11. Click “New Diagnosis” to end the DX2 session properly. Do not unplug the cord to end the session.



12. Click “OK” and allow the session to end.



A Toyota Group Company