

 <b>HYUNDAI</b>   NEW THINKING. NEW POSSIBILITIES.  <b>Technical Service Bulletin</b>	GROUP <b>CAMPAIGN</b>	NUMBER <b>16-01-052</b>
	DATE <b>November 2016</b>	MODEL(S) <b>SONATA (LF)</b>
<b>SUBJECT:</b> SUNVISOR INSPECTION AND REPLACEMENT (SERVICE CAMPAIGN TVV)		

### ★ IMPORTANT

#### \*\*\*\*\*DEALER STOCK ONLY\*\*\*\*\*

Dealers must perform this Service Campaign on all affected vehicles prior to customer retail delivery.

When a vehicle arrives at the Service Department, access Hyundai Motor America's "Warranty Vehicle Information" screen via WEBDCS to identify open Campaigns.

### Description:


On certain 2017MY Sonata (LF) the driver side sunvisor may not stay in the stowed position.

This bulletin describes the procedure to inspect and replace the driver side sunvisor as necessary.

### Applicable Vehicles:

- Certain 2017 SONATA (LF)

### Parts Information:

Part Image	Part Number	Description
	85201-C2000PPBQH	SUNVISOR ASS'Y, LH (Non – Sunroof)
	85201-C2000TRYQH	SUNVISOR ASS'Y, LH (Non – Sunroof)
	85201-C2000TTXQH	SUNVISOR ASS'Y, LH (Non – Sunroof)
	85201-C2300PPBQH	SUNVISOR ASS'Y, LH (Standard Sunroof)
	85201-C2300TTXQH	SUNVISOR ASS'Y, LH (Standard Sunroof)
	85201-C2500TRYQH	SUNVISOR ASS'Y, LH (Panoramic Sunroof)
	85201-C2500TTXQH	SUNVISOR ASS'Y, LH (Panoramic Sunroof)

**NOTE:** Interior color can be identified in the part number suffix.

CODE	INTERIOR COLOR
PPB	Beige
TRY	Black
TTX	Gray

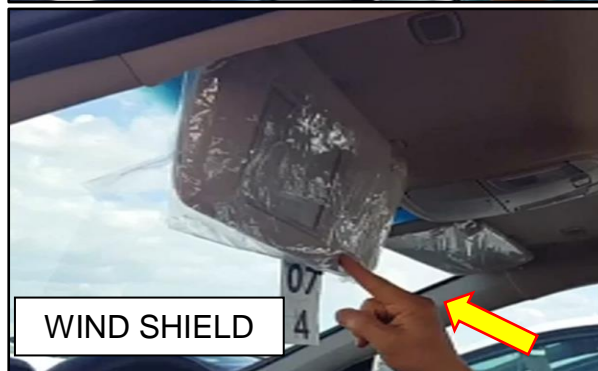
**Warranty Information:**

Op Code	Operation	OP Time
60CA19R0	SUNVISOR INSPECTION	0.2 M/H
60CA19R1	SUNVISOR REPLACEMENT	0.3 M/H

**NOTE:** Submit claim on Campaign Claim Entry Screen.

**Service Procedure:**

1. Cycle driver side sunvisor between fully raised and lowered positions 5 times.
2. Position sunvisor approximately at a 45 degree angle from the headliner. Check sun visor by gently tapping the edge of the visor. Push (tap) the sunvisor with small increments until it is repositioned near the windshield. (sunvisor set up : refer to the picture)



3. If the sunvisor maintains its position during the test, no part replacement is necessary. **Service procedure is now complete. Use labor op-code 60CA19R0.**  
If sunvisor does not maintain position, proceed with part replacement procedure starting with **step 4.**

4. To replace the sunvisor, remove the cover by using a trim tool.

Ensure not to damage the headlining and its surrounding components.



5. Remove the two bolts by using a T25 torx head screw driver.



6. Separate the sunvisor at the headliner.

Ensure to be cautious when removing the sunvisor. The sunvisor is connected with a wire at the headliner.



7. Disconnect the connector by pressing the connector tab.

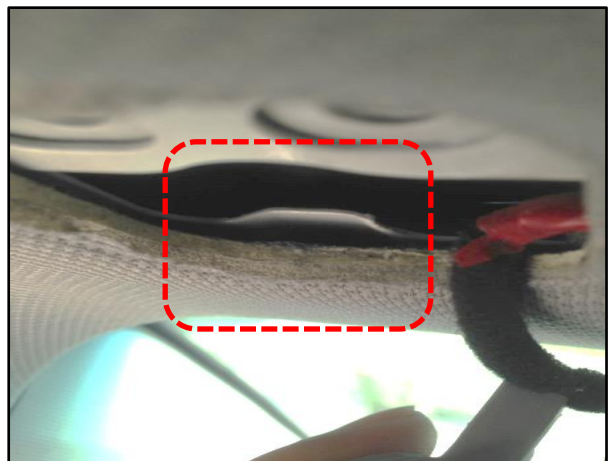




8. Assemble the replacement visor by connecting the connector.



9. The groove of the sunvisor mounting cover must be assembled properly to the mounting frame. The sheet metal must sit between the grooves of the sunvisor mounting cover. (refer to the red box in the picture)



10. Using the T25 torx head screwdriver, reinstall the bolts.

**Tightening torque: 4Nm – 5.8Nm  
(0.4 ~ 0.6 kgf.m, 3.0 ~ 4.3 lb-ft)**



11. Re-assemble the cover.



12. Verify that the visor light is working properly by operating the mirror cover. **Use labor Op-code 60CA19R1.**

**Service procedure is now complete.**

