 HYUNDAI NEW THINKING. NEW POSSIBILITIES. Technical Service Bulletin	GROUP CAMPAIGN	NUMBER 16-01-061
	DATE NOVEMBER 2016	MODEL(S) ELANTRA (ADa)
SUBJECT: OVERHEAD CONSOLE LAMP BULB SOCKET REPLACEMENT (SERVICE CAMPAIGN T1F)		

*** IMPORTANT**

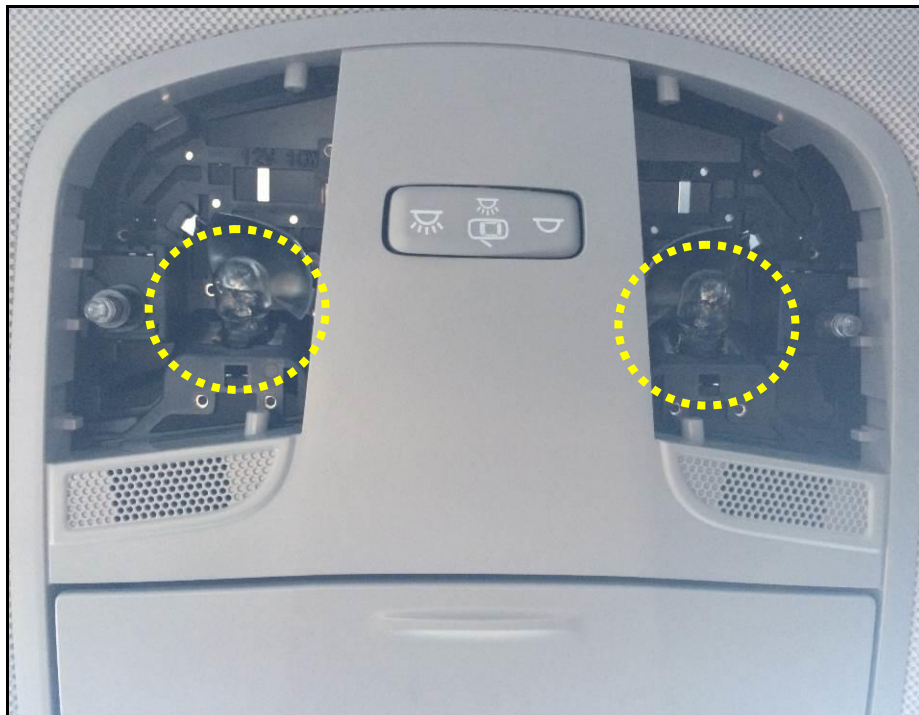
*******DEALER STOCK ONLY*******

Dealers must perform this Service Campaign on all affected vehicles prior to customer retail delivery.

When a vehicle arrives at the Service Department, access Hyundai Motor America's "Warranty Vehicle Information" screen via WEBDCS to identify open Campaigns.

Description: On certain 2017 Elantras, the overhead console lamp intermittently does not turn ON.


This bulletin provides the procedure to replace the bulb socket to correct the condition.



Applicable Vehicles: Certain 2017 Elantra (ADa)

SUBJECT: OVERHEAD CONSOLE LAMP BULB SOCKET REPLACEMENT (SERVICE CAMPAIGN T1F)

Parts Information:

PART NAME	FIGURE / PART NUMBER	QTY
BULB SOCKET ASSY		2
	18643-10009NQQH	

Warranty Information:

OP CODE	OPERATION	OP TIME
60CA20R0	BULB SOCKET REPLACEMENT	0.3 M/H

NOTE 1: Submit Claim on Campaign Claim Entry Screen.

NOTE 2: If a part is found in need of replacement while performing Campaign T1F and the affected part is still under warranty, submit a separate warranty claim using the same Repair Order. If the affected part is out of warranty, submit a Prior Approval Request for goodwill consideration prior to performing the work.

Service Procedure:

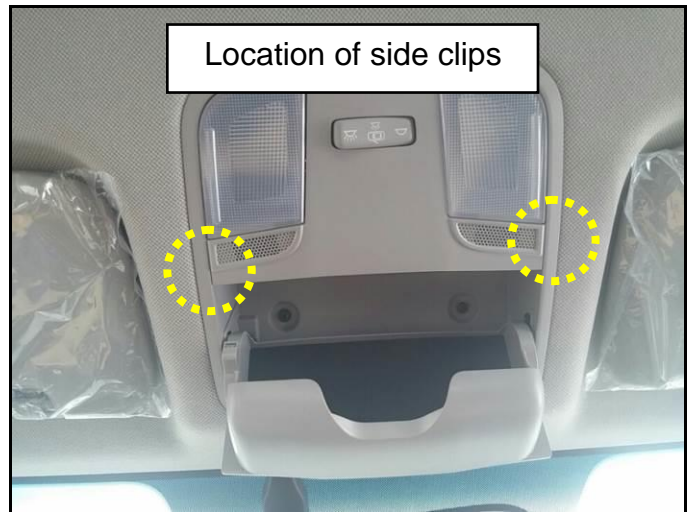
NOTICE

Wear clean gloves when performing the overhead console lamp bulb socket replacement to avoid contamination to the headliner.

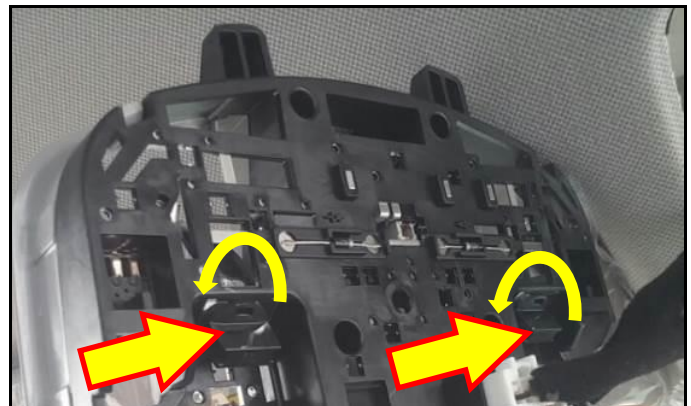
1. Open the sunglasses holder and use a Phillips screwdriver to remove the two screws.



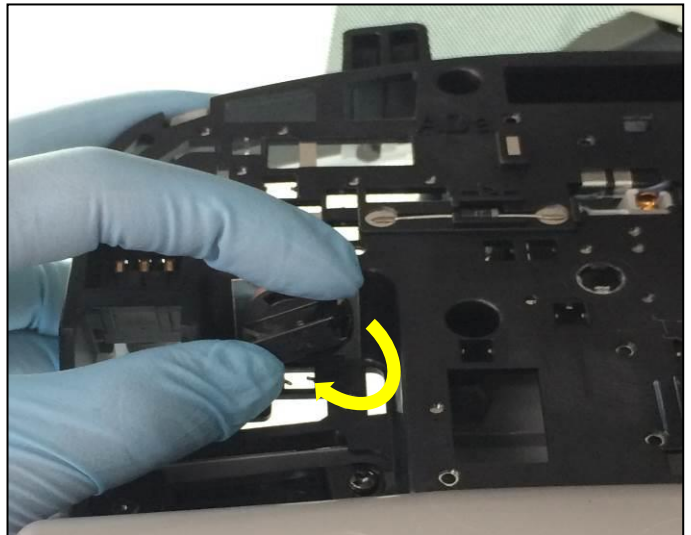
- Carefully pull the overhead console lamp assembly down, and use a flathead screwdriver to press against the side clips.



- After the console is lowered, remove both bulb sockets on the backside by twisting them counter clockwise. (As shown in picture)



4. Install the two new bulb sockets by twisting them clockwise.



5. Inspect the overhead console lamp assembly side clips to ensure they are not deformed.

If the side clips are deformed, use a flathead screwdriver to bend the clips into the correct position.

⚠ CAUTION

If the side clips are deformed, rattles can occur with the bracket or a gap between the headliner and the overhead console lamp assembly.

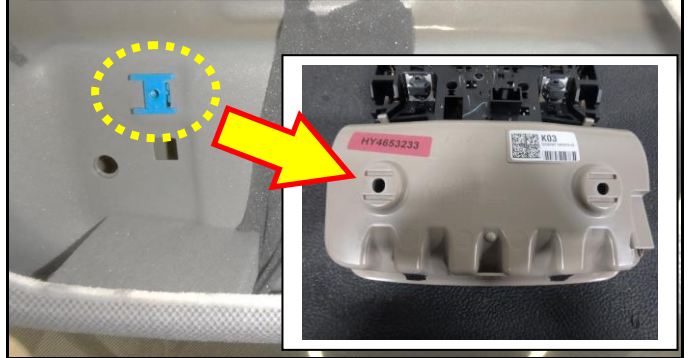


6. Reinstall the overhead console lamp assembly into the headliner and tighten the two screws.

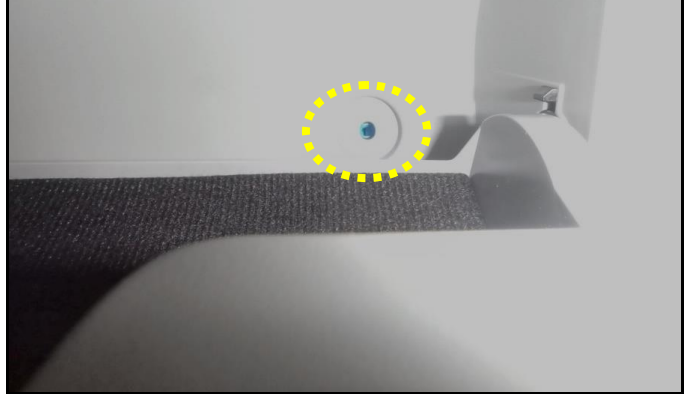


- 6a. If the two screws slip during the tightening process, ensure the overhead console assembly is firmly pressed against the roof and the holes are aligned.

By pressing the overhead console assembly against the roof, it will hold the clip in place through the two ridges.



Clip hole is aligned with the overhead console assembly.



- 7. Confirm the overhead console light is operating normally.

