 HYUNDAI NEW THINKING. NEW POSSIBILITIES. Technical Service Bulletin	GROUP HVAC	NUMBER 16-HA-001
	DATE NOVEMBER 2016	MODEL(S) SONATA (YF)
SUBJECT: HVAC HEATER BOX SEPARATOR REPLACEMENT PROCEDURE		


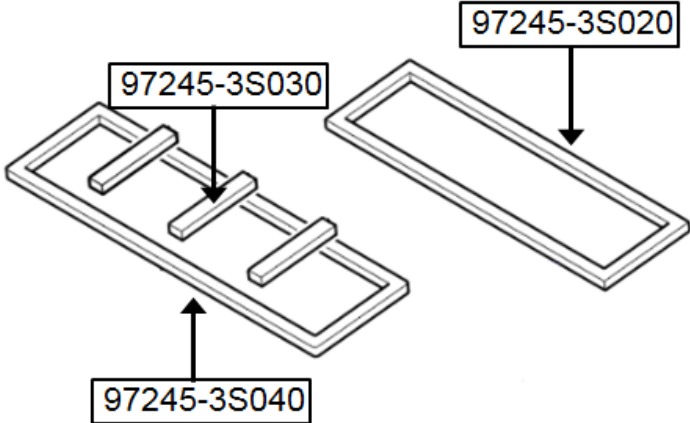
Description: Some Sonata (YF) vehicles may develop a condition with the separator plate in the middle of the heater box (Heater & Evaporator Assembly) becoming warped and may cause interference against one or more of the internal flaps that control air flow to the vents.

This condition may result in HVAC system exhibiting abnormal noise from the heater box, difficulty to control the vented temperature, blocked airflow due to improper mode control, and/or airflow stuck in defrost mode.

Follow the procedure outlined in this bulletin to replace the heater box separator to repair this condition.

Applicable Vehicles: 2011-2014MY Sonata (YF) 2.0T and 2.4L vehicles

Parts Information:

Part Name	Part Number		Note
Heater Box Separator		97203-3S000	Manual Control A/C Type
		97206-3S000	Dual Zone Full Auto Temp Control A/C Type
Foam Seals			<ul style="list-style-type: none"> Foam seal parts applicable to all model years and HVAC types. Not required to perform this repair. <p>(Only replace if damaged.)</p>

Circulate To: General Manager, Service Manager, Parts Manager, Warranty Manager, Service Advisors, Technicians, Body Shop Manager, Fleet Repair

Warranty Information:

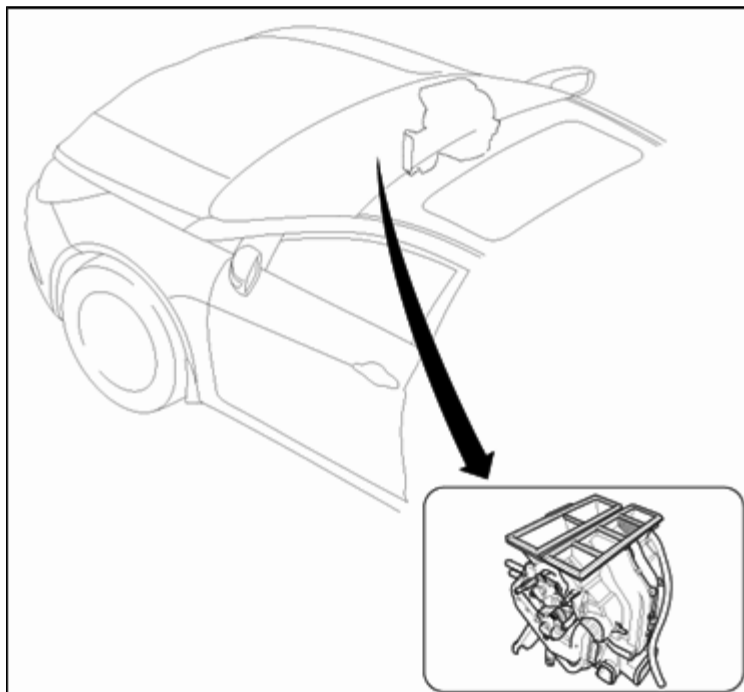
Model	Op Code	Operation	Causal Part	Op Time	Nature	Cause
Sonata (YF)	97206R00	HEATER BOX SEPARATOR	97203-3S000 (Manual A/C) 97206-3S000 (Auto A/C)	3.5 M/H	I52	ZZ3

NOTE: Use appropriate Causal Part according to the equipped A/C type. Normal warranty applies.

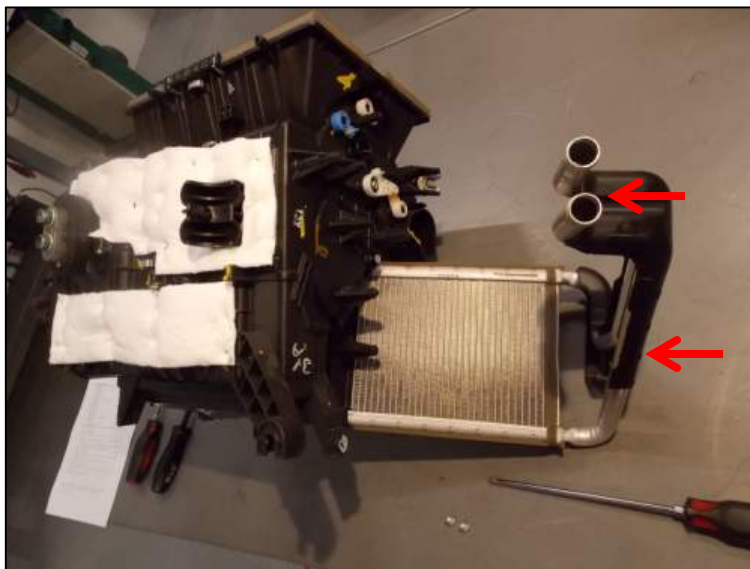
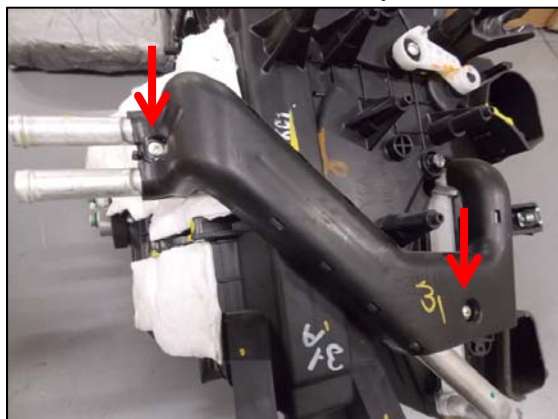
Service Procedure:

1. Refer to the service procedure published in the Shop Manual to properly remove the Heater & Evaporator Assembly.

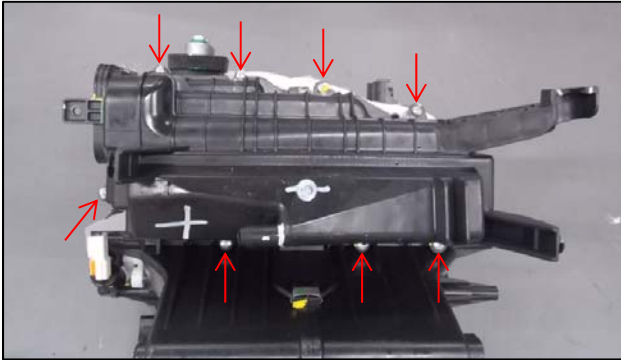
- **Shop Manual Section:**
Heating, Ventilation, Air Conditioning → Heater Unit → Repair Procedures



2. Remove the (2) screws from the heater core cover over the heater core tubes using a Philips screwdriver, and then remove the heater core from the assembly.

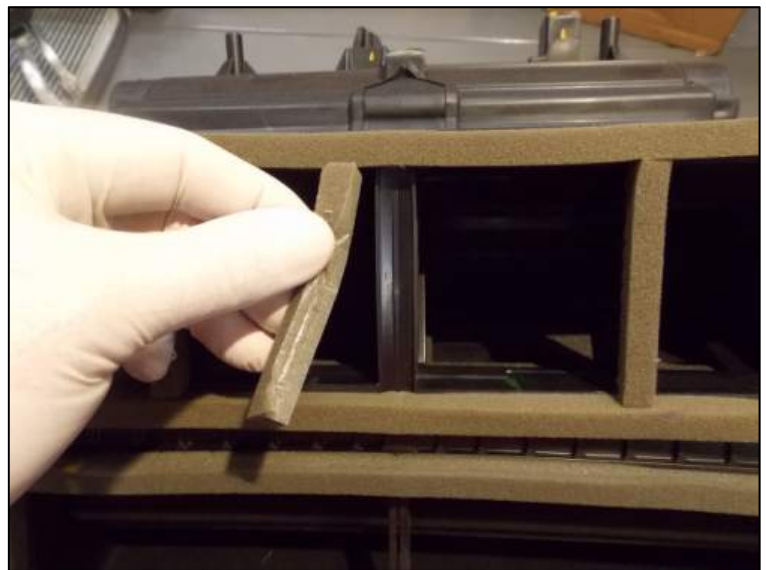


3. Remove the (8) screws from the plastic cover over the A/C evaporator using a Philips screwdriver, and then remove the plastic cover and the A/C evaporator.



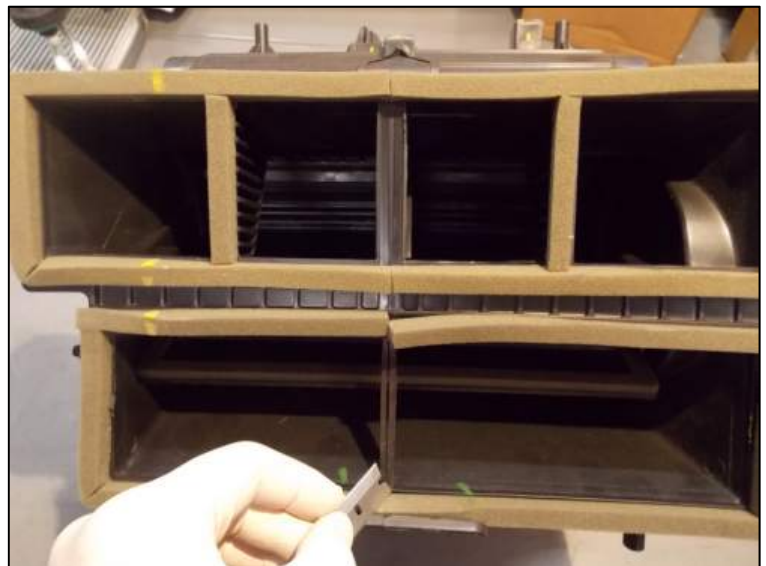
4. Carefully remove and save the short middle foam seal which covers the joint between the two case halves to be reinstalled later.

- Replace the seal (refer to Parts Information) if it is damaged or does not reattach securely during reassembly.



5. Using a sharp cutting blade, cleanly cut both of the large rectangular seals immediately over the joint between the two case halves.

- Replace the seals (refer to Parts Information) if it does not reattach securely during reassembly.



6. Using a putty knife or a gasket scraper, carefully loosen the white insulation pad from one side of the Heater & Evaporator Assembly to expose the joint between the 2 case halves.



7. Remove the (4) screws holding the two case halves together.

- Several screws are deep in recesses, so a long magnetic screwdriver is helpful.
- It may be necessary to remove one or more of the actuators to access the screws.

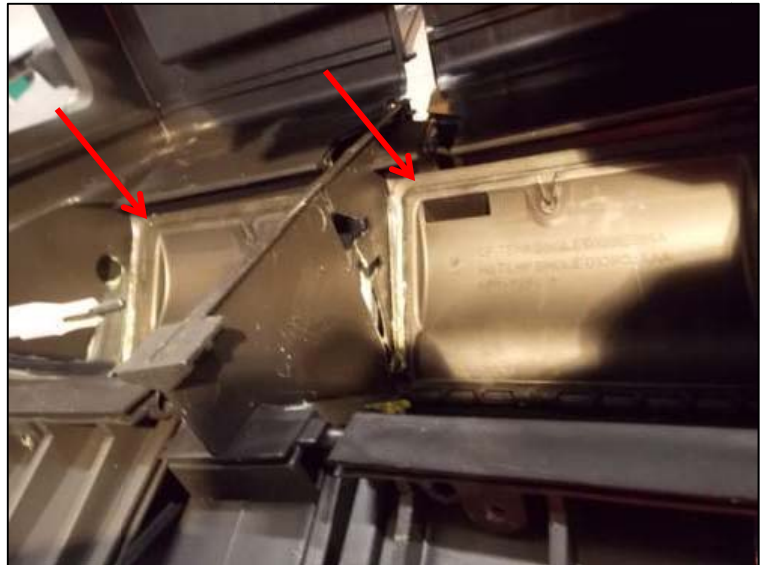


8. Use a flat blade screwdriver or a suitable prying tool to remove the (9 total) Case to Case Clips holding the two case halves together.

- Keep all (9 total) Case to Case Clips for later reinstallation.



9. Separate the two case halves.
- It may be necessary to move the internal flaps to align them with the access slots.



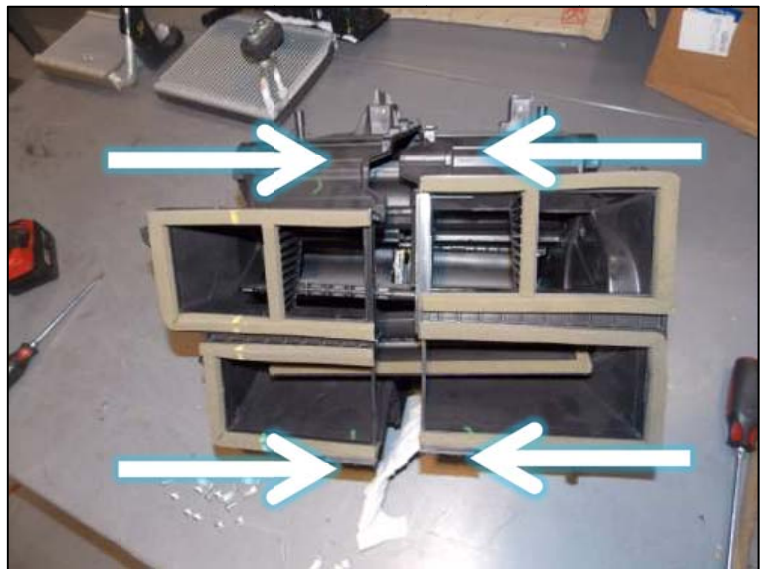
10. Remove the Heater Box Separator and replace it with a new part.



11. Slide the two case halves back together.

NOTICE

Ensure that the pivots for the internal flaps are positioned correctly together and the case halves are not misaligned.



12. Reinstall the (9) Case to Case Clips and all the screws that secure the case halves together.

- Reinstall any actuators that were removed during the disassembly.
- Reinstall the short middle foam seal that was previously removed during Step 4.



13. Use a suitable adhesive (such as a spray type) to reattach the white insulation pad to the original position on the Heater & Evaporator Assembly.



14. Refer to the service procedure published in the Shop Manual to properly reinstall the Heater & Evaporator Assembly.

- **Shop Manual Section:**
Heating, Ventilation, Air Conditioning → Heater Unit → Repair Procedures

15. Verify correct operation of the Heater & Evaporator Assembly before completing this repair.
- Check for abnormal noise and confirm airflow while changing between vent direction modes.
 - Check for normal airflow changes while adjusting set temperature from full cold to full hot.
 - Independently check driver and passenger sides if equipped with dual zone FATC.
 - Check for abnormal noise and confirm airflow while changing between FRESH/RECIRC intake.
 - Check the proper connection and routing of the A/C evaporator drain hose.