



# Service Bulletin

File in Section: -

Bulletin No.: 16-NA-126

Date: October, 2016

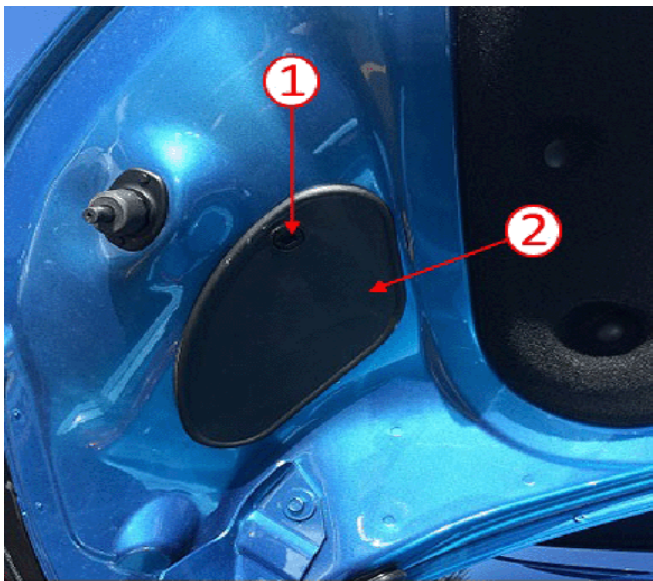
## TECHNICAL

**Subject: Battery Goes Dead Intermittently with No Parasitic Drain Noted**

Brand:	Model:	Model Year:		VIN:		Engine:	Transmission:
		from	to	from	to		
Buick	Cascade	2016	2016	SOP	GG088621		

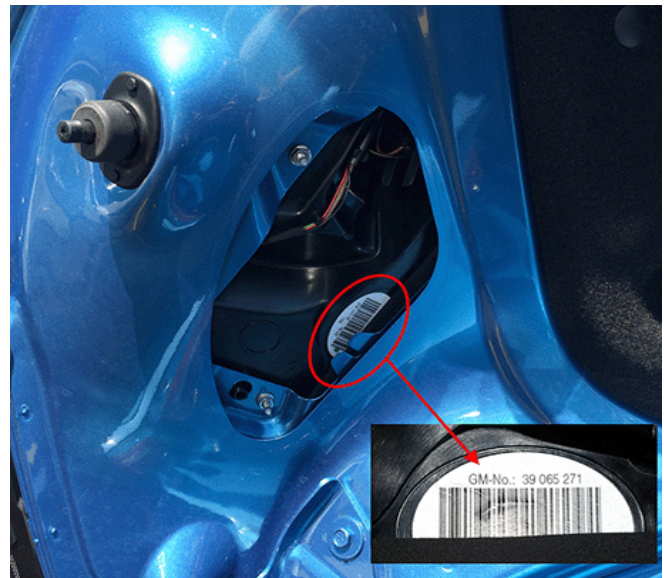
<b>Condition</b>	Some customers may comment that the battery goes dead when driven short distances and then sitting for long periods of time.
<b>Cause</b>	If the battery drops below 65% state of charge, tail lamps can send a diagnostic request to the BCM causing everything on the BUS to wake up and remain awake until battery drains.

### Correction



4587078

1. Open the rear compartment lid.
2. Remove the rear tail lamp access hole cover nut (1).
3. Remove the tail lamp access hole cover (2).



4587086

4. Inspect the tail lamp labels:
  - If the part number on the label is 39065271 or 39065272 as shown above, replace both tail lamps with the revised lamps.
  - If the part numbers on the labels are 39077219 and 39077220, the vehicle already has the revised lamps. **Do not** replace the tail lamps and follow normal parasitic drain diagnostics in SI.

### Service Information

Replace the tail lamps with revised lamps. Refer to *Tail Lamp Replacement* in SI. Using the GR8, Charge and Test to top off the battery after replacing the tail lamps.

## Parts Information

Description	Part Number	Qty
Lamp, RR Combination L	39077219	1
Lamp, RR Combination R	39077220	1

## Warranty Information

For vehicles repaired under warranty, use:

Labor Operation	Description	Labor Time
2080738*	Tail Lamp Replacement	0.4 hr
Add	Battery Charge and Test	0.2 hr

\*This is a unique Labor Operation for Bulletin use only.

Version	2
Modified	September 27, 2016 - Updated Correction and Warranty Information sections.

