

TECHNICAL SERVICE BULLETIN

Group:	48-SUSPENSION
Bulletin No:	SB-16-006
Issue Date:	4-20-2016
Vendor Ref.:	HMM-160308-B1

REAR SPRING PAD LOOSE

SUBJECT VEHICLES: 11MY-16MY Conventional Trucks (238, 258, 268, or 338)

Note: This service bulletin is provided as technical information and is not authorization for a warrantable repair.

OVERVIEW:

Some vehicles built before January 2016 and equipped with a leaf spring rear suspension may experience a dislodged or missing spring pad. As an enhancement, the rear axle leaf spring hanger design has been changed to eliminate the spring pad. In the event that one or more spring pads have become dislodged or found missing, all four rear axle leaf spring hangers should be replaced with the enhanced design hangers.

BEFORE YOU BEGIN

- Read and understand all instructions and procedures before you begin the work.
- Read and follow all **WARNINGS** and **NOTICES** set forth in this publication. These alerts help to avoid damage to components, serious personal injury, or both.
- Park the vehicle on a flat, level and solid surface.
- Place the gear shift lever in "Neutral" or "Park".
- Apply the parking brake firmly and confirm parking brake activation.
- Turn off the engine and remove the key from the ignition switch.
- Always wear safety glasses or goggles to protect your eyes.
- Place wheel chocks in front of and behind all the wheels to prevent the vehicle from moving.

PARTS

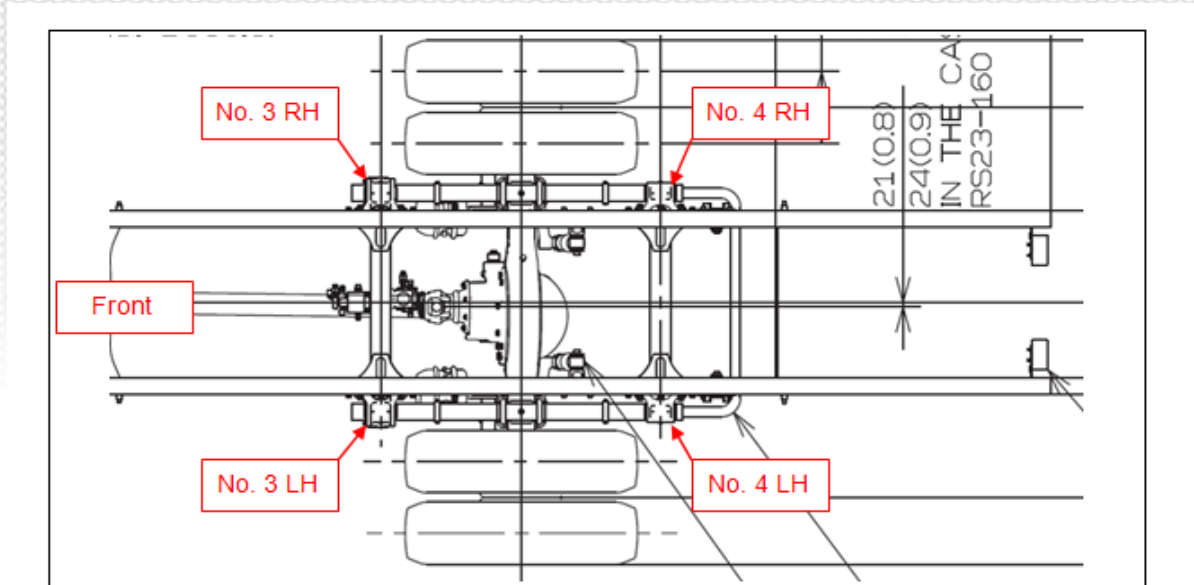
PART NUMBER	DESCRIPTION	QUANTITY
48414-E0350	BRACKET, SPRING NO.3 RH	1
48415-E0020	BRACKET, SPRING NO.3 LH	1
48416-E0120	BRACKET, SPRING NO.4 RH	1
48417-E0010	BRACKET, SPRING NO.4 LH	1



A Toyota Group Company

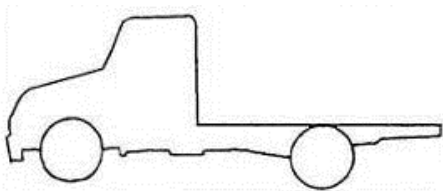
TECHNICAL SERVICE BULLETIN

Group:	48-SUSPENSION
Bulletin No:	SB-16-006
Issue Date:	4-20-2016
Vendor Ref.:	HMM-160308-B1



VEHICLE PREPARATION

1. Park the vehicle on a flat, level and solid surface.



2. Confirm the engine is stopped, the ignition switch is in the off (LOCK) position, and the key is removed.



A Toyota Group Company

TECHNICAL SERVICE BULLETIN

Group:	48-SUSPENSION
Bulletin No:	SB-16-006
Issue Date:	4-20-2016
Vendor Ref.:	HMM-160308-B1

3. Apply the parking brake.



4. Chock all the wheels.



REPAIR PROCEDURE

1. With wheel chocks placed on the front wheels, jack the rear of the vehicle from the axle and place jack stands under the rear frame rails.

WARNING: NEVER work under the vehicle unless it is properly supported with jack stands.



A Toyota Group Company

TECHNICAL SERVICE BULLETIN

Group:	48-SUSPENSION
Bulletin No:	SB-16-006
Issue Date:	4-20-2016
Vendor Ref.:	HMM-160308-B1

2. Lower the jack supporting the rear axle until the weight of the vehicle is placed on the jack stands. Allow the jack to continue to support the axle. When the axle is properly supported, there will be clearance between the spring pads and the leaf springs.



3. Starting on the driver side of the vehicle, remove the two bolts holding the tension leaf spring to the No.3 LH spring hanger bracket. If any alignment washers are present, remove and retain, and be sure to note these alignment washer locations for reassembly.

WARNING: Only remove components from one side of the vehicle at a time to ensure the axle remains stable on the jack.



A Toyota Group Company

TECHNICAL SERVICE BULLETIN

Group:	48-SUSPENSION
Bulletin No:	SB-16-006
Issue Date:	4-20-2016
Vendor Ref.:	HMM-160308-B1

4. Remove the clip and washer securing the spring pin in the No. 3 LH spring hanger bracket and remove the spring pin. Retain the clip, washer, and spring pin for reassembly.



5. Remove the six nuts and bolts securing the No. 3 LH spring hanger bracket to the frame rail. Lift the spring hanger bracket off the spring and discard. Retain the nuts and bolts for reassembly.

NOTICE: It will be necessary to adjust the height of the axle using the jack to remove all bolts.



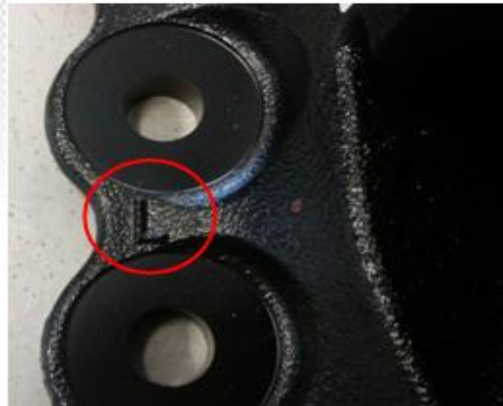
A Toyota Group Company

TECHNICAL SERVICE BULLETIN

Group:	48-SUSPENSION
Bulletin No:	SB-16-006
Issue Date:	4-20-2016
Vendor Ref.:	HMM-160308-B1

6. Install the new No. 3 LH spring hanger bracket using the six nuts and bolts removed in step 5.

NOTICE: These brackets are side specific and marked “L” or “R”. Make certain they are installed on the correct side.



7. Torque the six nuts and bolts to the specified torque.

Specified Torque: 205 lb-ft (278Nm)



A Toyota Group Company

TECHNICAL SERVICE BULLETIN

Group:	48-SUSPENSION
Bulletin No:	SB-16-006
Issue Date:	4-20-2016
Vendor Ref.:	HMM-160308-B1

8. Use the jack to realign the tension leaf mounting holes and reinstall the two bolts. Ensure any alignment washers removed in step 3 are also reinstalled. Torque the tension leaf bolts to the specified torque.

Specified Torque: 177 lb-ft (240Nm)



9. Reinstall the spring pin, washer, and retaining clip in the No. 3 LH spring hanger bracket.



A Toyota Group Company

TECHNICAL SERVICE BULLETIN

Group:	48-SUSPENSION
Bulletin No:	SB-16-006
Issue Date:	4-20-2016
Vendor Ref.:	HMM-160308-B1

10. Adjust the jack to position the axle so that the driver side leaf spring is free of the No. 4 LH spring hanger.



11. Remove the clip and washer holding the spring pin in the No. 4 LH spring hanger bracket and remove the spring pin. Retain the clip, washer, and spring pin for reassembly.



A Toyota Group Company

TECHNICAL SERVICE BULLETIN

Group:	48-SUSPENSION
Bulletin No:	SB-16-006
Issue Date:	4-20-2016
Vendor Ref.:	HMM-160308-B1

12. Remove the four nuts and bolts securing the No. 4 LH spring hanger bracket to the frame rail. Lift the spring hanger bracket off the spring and discard. Retain the nuts and bolts for reassembly.

NOTICE: It will be necessary to adjust the height of the axle using the jack to remove all bolts.



13. Install the new No. 4 LH spring hanger using the four nuts and bolts removed during step 12.

NOTICE: These hangers are side specific and marked “L” or “R”. Make certain they are installed on the correct side.



A Toyota Group Company

TECHNICAL SERVICE BULLETIN

Group:	48-SUSPENSION
Bulletin No:	SB-16-006
Issue Date:	4-20-2016
Vendor Ref.:	HMM-160308-B1

14. Torque the four nuts and bolts to the specified torque.

Specified Torque: 205 lb-ft (278Nm)



15. Reinstall the spring pin, washer, and retaining clip in the No. 4 LH spring hanger bracket.



16. Repeat steps 3 through 15 on the passenger side of the vehicle.



A Toyota Group Company

TECHNICAL SERVICE BULLETIN

Group:	48-SUSPENSION
Bulletin No:	SB-16-006
Issue Date:	4-20-2016
Vendor Ref.:	HMM-160308-B1

17. Jack the rear of the vehicle from the axle. Remove the jack stands from the frame rails, and lower the vehicle to the ground.

Proceed to "Final Inspection Procedure."

WARNING: NEVER work under the vehicle unless it is properly supported with jack stands.



FINAL INSPECTION PROCEDURE:

1. To complete this Technical Service Bulletin, review the bulletin and confirm the following:
All four rear leaf spring hangers have been replaced.
The hangers have been installed on the correct side of the vehicle.
All fasteners are tightened to the specified torque.

CLAIM APPLICATION

Labor Charge: 2.5 Hours

Warranty Code: 54171

Trouble Code: 40

Operation Code: 61250AOT

Part Number: 48414E0350



A Toyota Group Company