

TECHNICAL BULLETIN

Q629NAS1

17 NOV 2016



© Jaguar Land Rover North America, LLC

NOTE: The information in Technical Bulletins is intended for use by trained, professional Technicians with the knowledge, tools, and equipment required to do the job properly and safely. It informs these Technicians of conditions that may occur on some vehicles, or provides information that could assist in proper vehicle service. The procedures should not be performed by 'do-it-yourselfers'. If you are not a Retailer, do not assume that a condition described affects your vehicle. Contact an authorized Land Rover service facility to determine whether this bulletin applies to a specific vehicle.

SECTION: 501-03

Service Action: Tailgate Lamp Squeaks and Rattles

AFFECTED VEHICLE RANGE:

Discovery Sport (LC)

Model Year: 2016-2017
VIN: 587188-641575
Assembly Plant: Halewood

MARKETS:

NAS

CONDITION SUMMARY:

Situation: An issue has been identified on a limited number of vehicles within the listed Affected Vehicle Range where the tailgate lamp may contact the tailgate finisher, causing a 'squeak' and/or 'rattle' noise.

Action: Retailers are required to **HOLD** affected new vehicles that are within your control and refrain from releasing the vehicles for **new vehicle sale** pending completion of the Service Instruction detailed in this Technical Bulletin. Unsold vehicles should have this performed as part of the Pre-Delivery Inspection (PDI) process but **must** have it completed prior to vehicle handover to the customer.

Affected vehicles already in the hands of customers should be updated at the next available opportunity.

PARTS:



NOTE: Order only the expected percentage demand of parts identified.

DESCRIPTION	PART No./SUNDRY CODE	QTY./VALUE	EXPECTED % of VEHICLES REQUIRING PARTS
Circular patch	BNP3996	1	100
Spacer Windshield Glass	CZU000010	1	100

SPECIAL TOOLS:

Refer to Workshop Manual/Service Instruction for any required special tools.

WARRANTY:



NOTE: Check DDW to ensure that a vehicle is affected by this program prior to undertaking any rework action.

At the time of confirming a booking for vehicle repair, ensure that **all** outstanding Recalls and Service Actions are identified to ensure the correct parts are available and adequate workshop time is allocated for repairs to be completed at one visit.

Warranty claims must be submitted quoting the Program Code together with the relevant Option Code from the table. SRO and parts information is included for information only. The Option Code(s) that allows for the drive in / drive out allowance can only be claimed if the vehicle is brought back into the workshop for this action alone to be undertaken.

This program is valid for a limited time only. Warranty claims with a repair date prior to the **31 October 2018** closure date must be submitted or payment within 30 calendar days of completion of the repair.

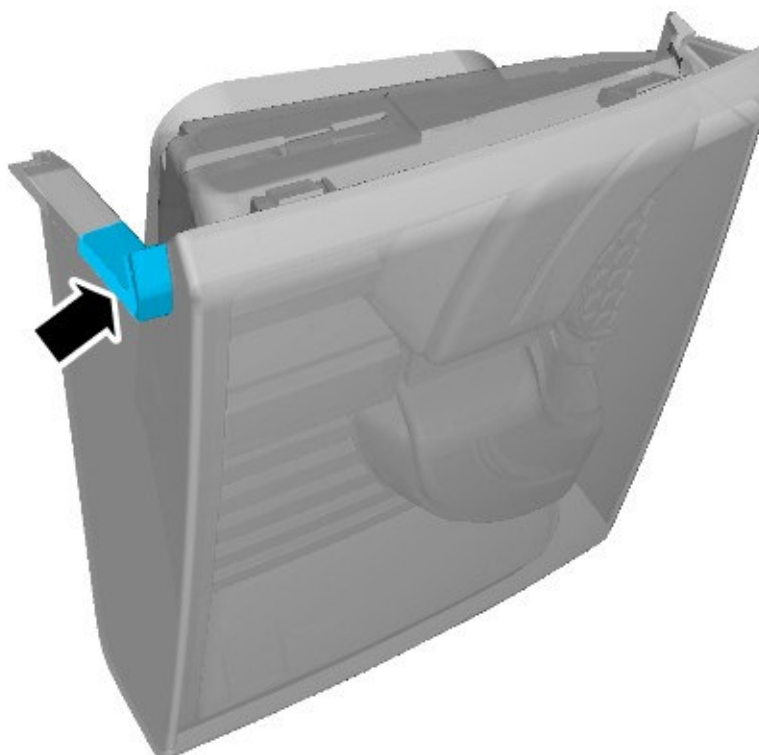
Repair procedures are under constant review and therefore times / prices are subject to change; those quoted here must be taken as guidance only. Refer to TOPIx to obtain the latest repair time.

PROGRAM CODE	OPTION CODE	DESCRIPTION	SRO	TIME (HOURS)	PARTS/SUNDRY CODE	QTY./VALUE
Q629	B	Tail Lamp - Modification	86.40.88.29	0.20	BNP3996 CZU000010	1 1
Q629	C	Tail Lamp - Modification Drive in/drive out	86.40.88.29 02.02.02	0.20 0.20	BNP3996 CZU000010 -	1 1 -


Normal Warranty policies and procedures apply.

SERVICE INSTRUCTION:

1. Remove both inner tail lamp assemblies (see TOPIx Workshop Manual section 417-01: Exterior Lighting - Inner Tail Lamp Assembly).
2. Use a suitable cloth to clean the area shown.

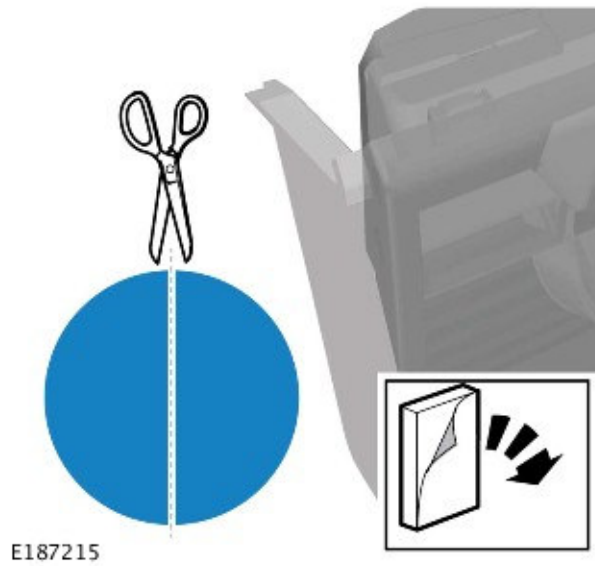


E194827

3.  **NOTE: Cutting the circular patch (BNP3996) in half creates two pieces, one for each inner tail lamp assembly.**

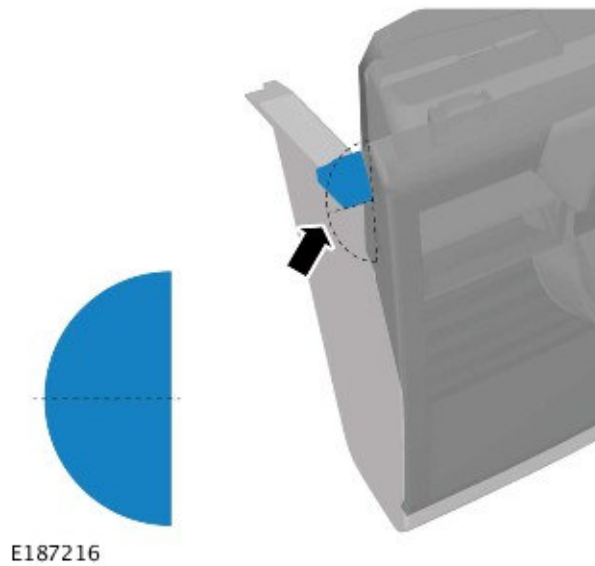
Use a suitable tool to cut the circular patch (BNP3996) in half.

- Remove the backing from the circular patch.

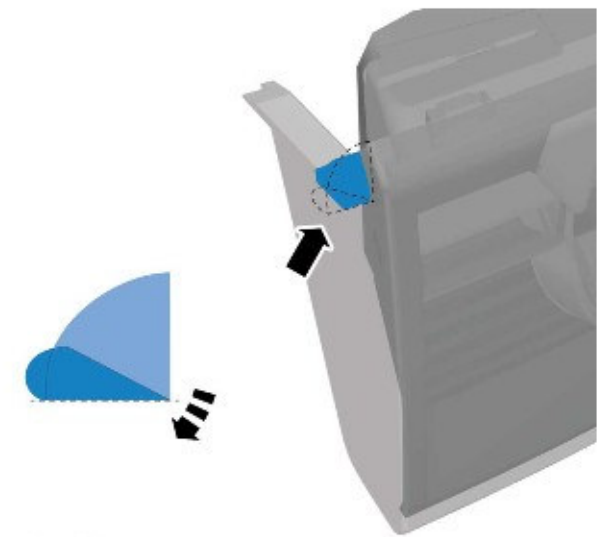


4. Install one of the half-circular patches as shown.

- The half-circular patch will fold 90° and secure under the inner tail lamp.



5. The half-circular patch located and installed on the inner tail lamp.



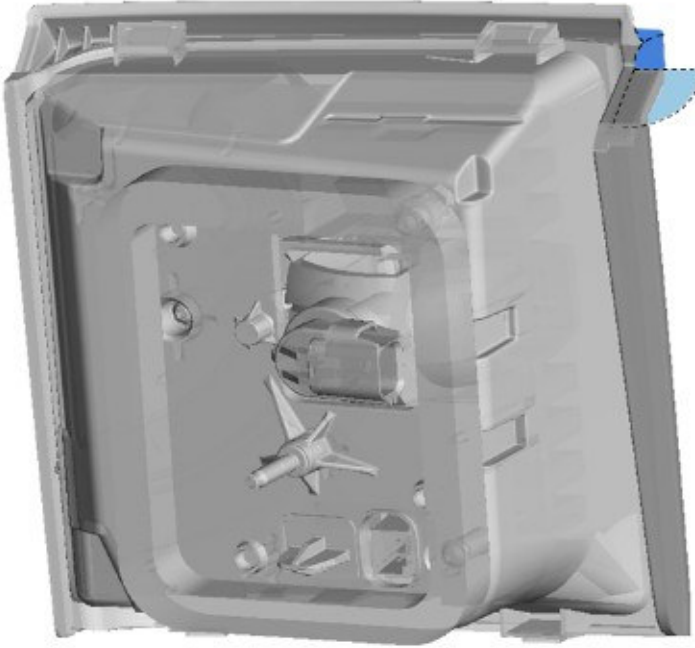
E187468

6. Cut across the line as shown.



E198903

7. Fold the top edge as shown.



E198904

- 8.** Fold the bottom edge as shown.



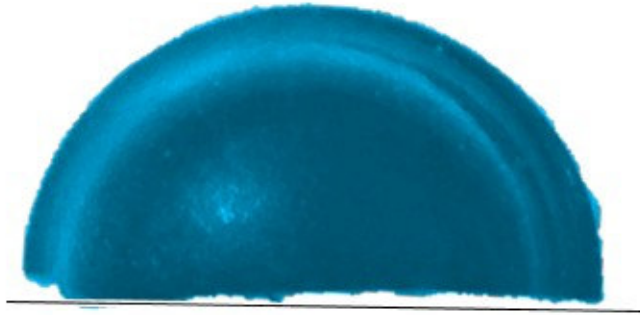
E198905

9. Repeat Steps 2-8 to the other inner tail lamp assembly.

10.  **NOTE: Cutting the spacer in half creates two pieces, one for each inner tail lamp assembly.**

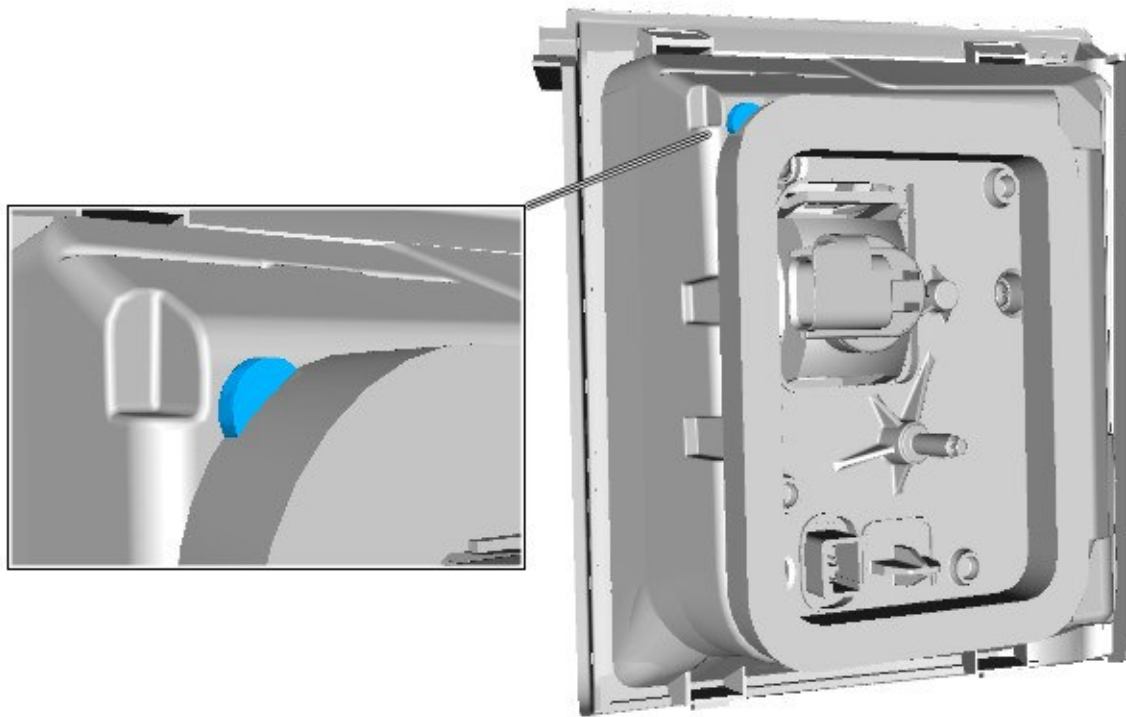
 **NOTE: Spacer shown already cut in half.**

Cut the spacer (CZU000010) in half.



E194780

- 11.** Install one half of the spacer in the area shown.



E198694

12. Repeat Steps 10-11 to the other inner tail lamp assembly.

13. Install the tail lamp assemblies (see TOPIx Workshop Manual section 417-01: Exterior Lighting - Inner Tail Lamp Assembly).