



# Service Bulletin

## TECHNICAL

**Subject:** CHARGE DOOR OPEN Message Displayed with Charge Port Door Closed

**Attention:** This Bulletin also applies to any of the models that may be Export vehicles.

Brand:	Model:	Model Year:		VIN:		Engine:	Transmission:
		from	to	from	to		
Chevrolet	Volt	2016	2017			All	All

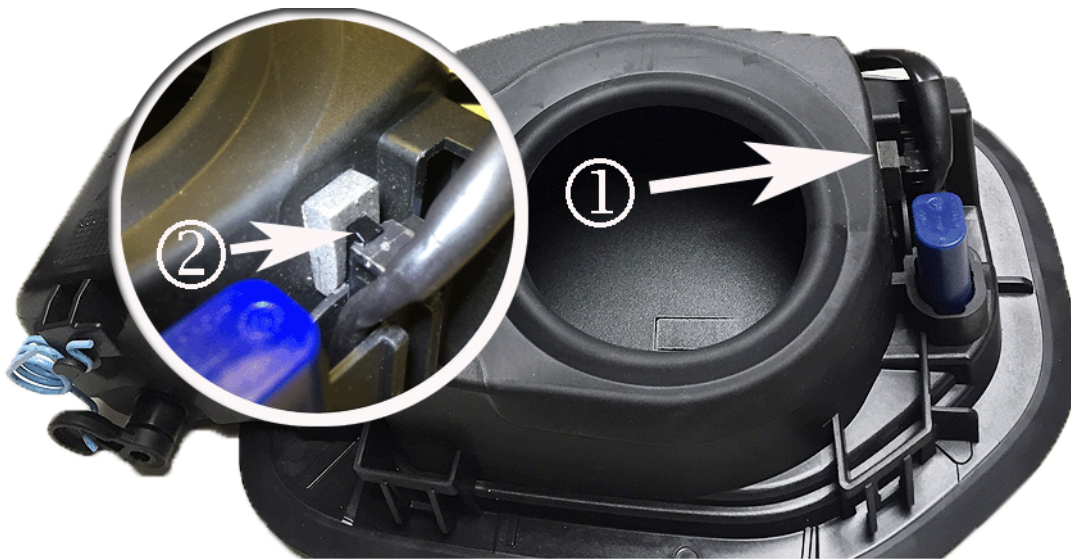
<b>Condition</b>	Some customers may comment that the CHARGE DOOR OPEN message displays when the charge port door is actually closed.
<b>Cause</b>	The charge port door switch may not have been completely installed and seated, or the harness pigtail connector may have been dislodged.

### Correction

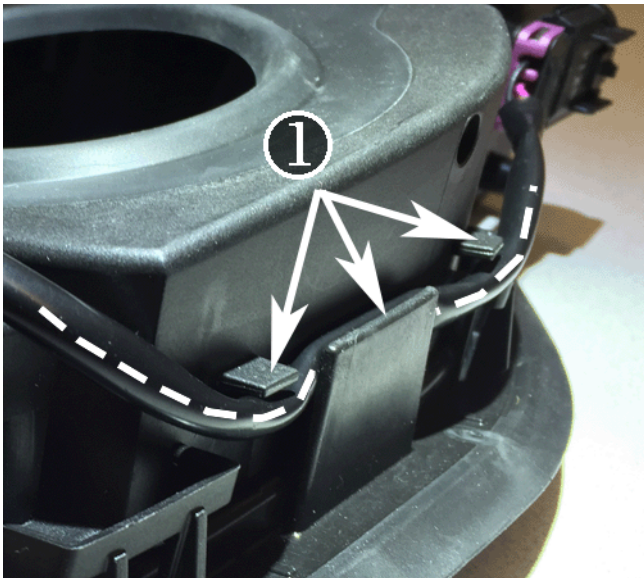
Remove the charge port housing assembly and install a small piece of foam to ensure the switch retaining tang is held in place.

### Service Procedure

1. Remove the charge port housing assembly. Refer to *Charge Port Housing Replacement* in SI.
2. Obtain a small amount of medium density, self-adhesive foam (shim stock) from shop material.
3. Cut a small piece approximately 3/8" x 1/2" (10 mm x 13 mm).



4. Install the switch to the housing, fully seated into the indexed features, and secured by the switch retaining tang (2).
5. Install the foam retainer (1) with the adhesive side to the housing, to be wedged between the housing and the switch retaining tang (2).
6. Ensure the switch retaining tang (2), shown in the close-up, is fully engaged and centered on the switch.



7. Make sure the switch harness is routed through the retaining tabs (1).
8. Install the charge port housing assembly.

## Warranty Information

Labor Operation	Description	Labor Time
5080178*	Install Foam Between Charge Port Housing and Door Switch Retaining Tang	2.3 hrs
*This is a unique Labor Operation for Bulletin use only.		

Version	2
Modified	March 17, 2016 – Added 2017 Model Year.

GM bulletins are intended for use by professional technicians, NOT a "do-it-yourselfer". They are written to inform these technicians of conditions that may

occur on some vehicles, or to provide information that could assist in the proper service of a vehicle. Properly trained technicians have the equipment, tools, safety instructions, and know-how to do a job properly and safely. If a condition is described, DO NOT assume that the bulletin applies to your vehicle, or that your vehicle will have that condition. See your GM dealer for information on whether your vehicle may benefit from the information.



WE SUPPORT VOLUNTARY TECHNICIAN CERTIFICATION