



GROUP
BOD

MODEL
2016MY
Optima (JFa)

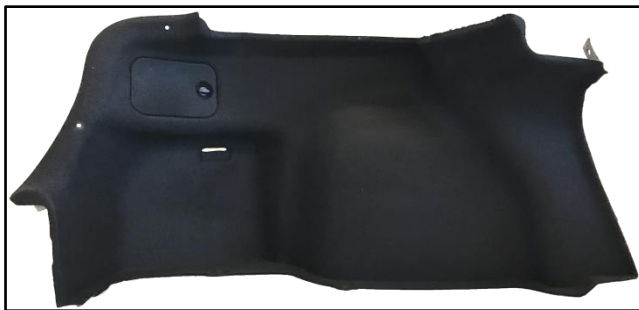
NUMBER
161

DATE
December 2016

TECHNICAL SERVICE BULLETIN

SUBJECT: LUGGAGE SIDE TRIM REPLACEMENT

This bulletin provides the procedure to replace the luggage side trims on 2016MY Optima (JFa) vehicles, produced from September 28, 2015 to August 16, 2016, which may experience a concern with high cabin pressure. This concern is caused by the isolation pads of the luggage side trim assemblies blocking the extractor vents. Follow the procedure outlined in this bulletin to replace the left and right luggage side trims.



Luggage Side Trim (LH & RH)



Extractor Vent

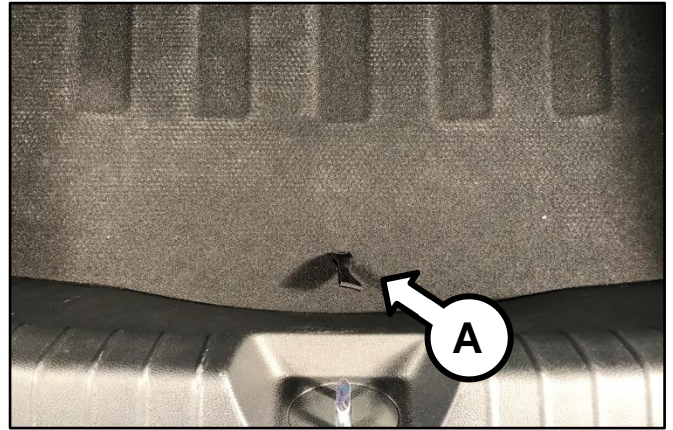
File Under: <Body>

Circulate To: General Manager Service Manager Parts Manager
 Service Advisors Technicians Body Shop Manager Fleet Repair

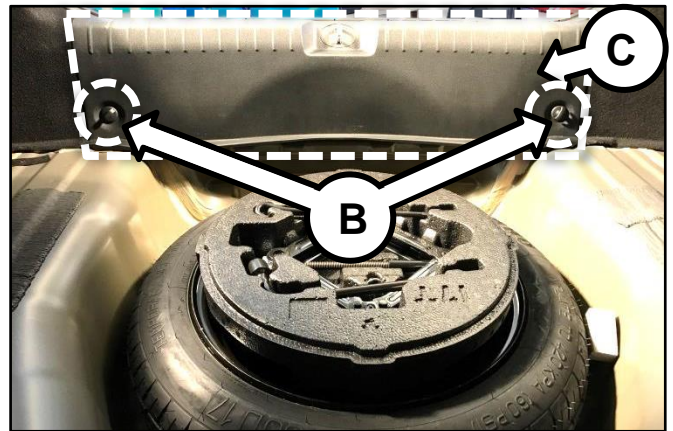
SUBJECT: LUGGAGE SIDE TRIM REPLACEMENT

Service Procedure:

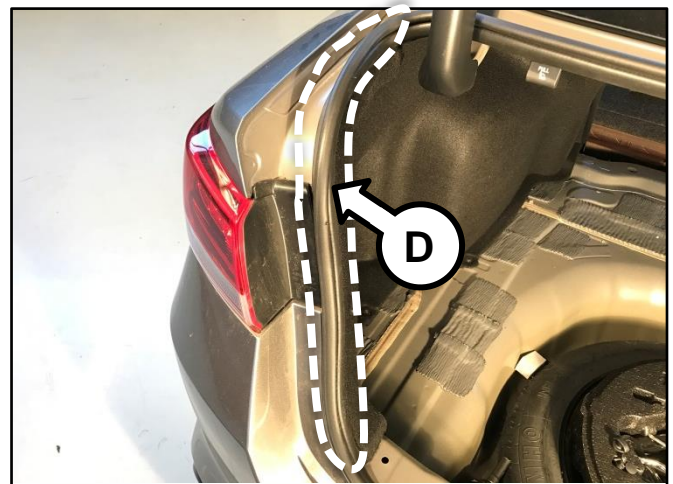
1. Remove the trunk liner (A).



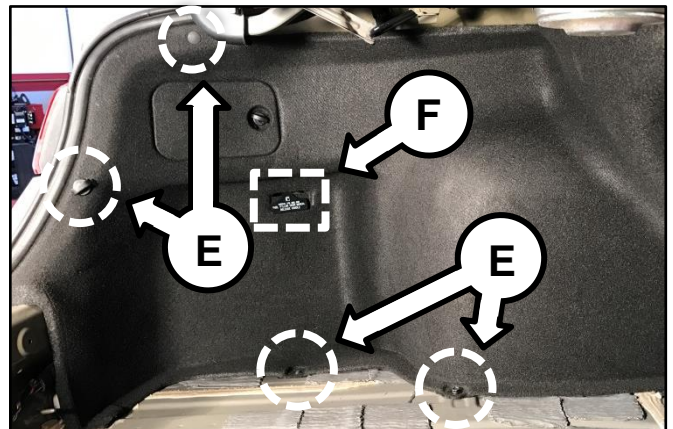
2. Remove the two (2) retaining cargo net hooks (B) and remove the transverse trim (C).



3. Partially remove the trunk weatherstrip (D) at the edges of the luggage trims.



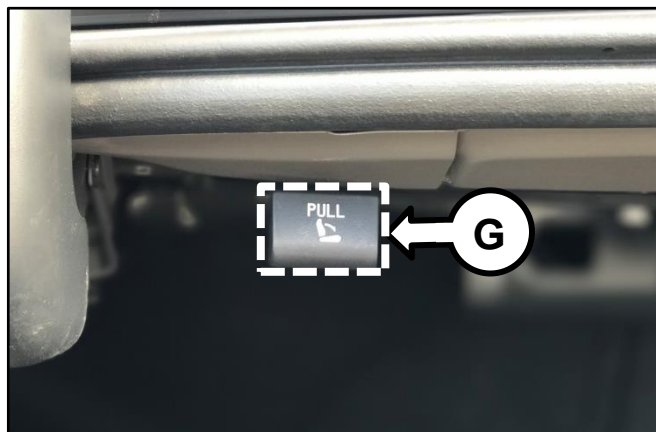
4. Remove the luggage trim retainers (E) on both left and right sides and detach the fuel door release handle (F) from the left luggage side trim.



SUBJECT:

LUGGAGE SIDE TRIM REPLACEMENT

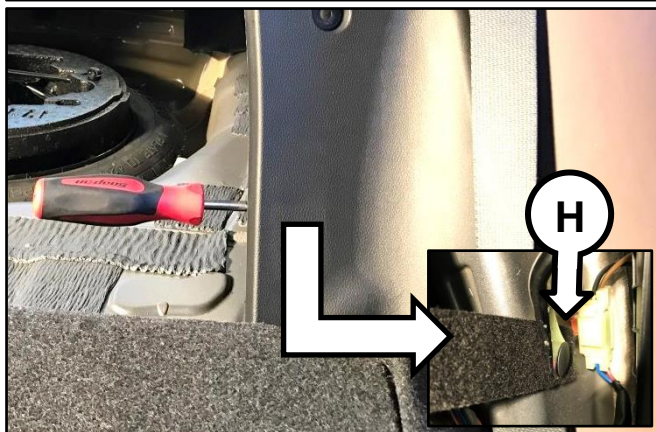
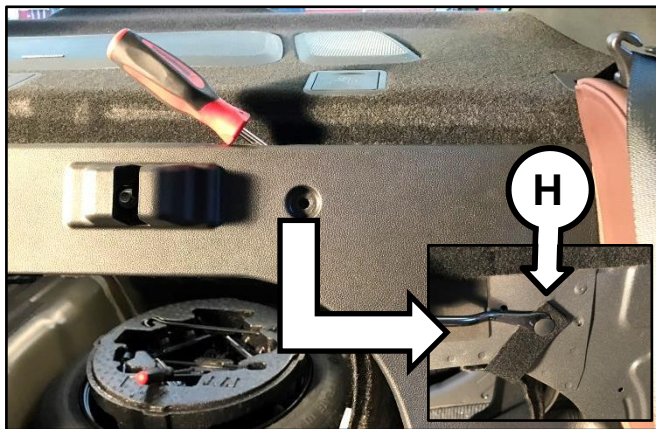
5. Fold down the rear seats completely by pulling the left and right rear seat release handles (G).



6. Remove the seven (7) partition trim retaining bolts.



7. While slightly pulling back the partition trims, use a clip puller and carefully remove the two (2) luggage side trim retaining clips (H) on the left and right sides.





8. Remove and replace the luggage side trims with improved parts.
9. Reinstall all removed components in the reverse order of removal.

SUBJECT:**LUGGAGE SIDE TRIM REPLACEMENT****AFFECTED VEHICLE RANGE:**

Model	Production Date Range
Optima (JFa)	September 28, 2015 to August 16, 2016

REQUIRED PART:

Part Name	Part Number	Figure
Trunk Liner (LH)	85730 D5000WK	
Trunk Liner (RH)	85740 D5000WK	

WARRANTY INFORMATION:

Claim Type	Causal P/N	Qty.	N Code	C Code	Repair Description	Labor Op Code	Op Time	Replacement P/N	Qty.
W	85730 D4000WK	0	I14	ZZ3	Luggage Side Trim Replacement (Both)	85730F01	0.5 M/H	85730 D5000WK	1
								85740 D5000WK	1