

# NEWMAR CORPORATION WARRANTY DEPARTMENT

## RECALL SERVICE BULLETIN

DATE ISSUED	MODEL YEAR(S) AFFECTED	RSB #
12/01/2016	2017	474

### BRAND

Bay Star Sport	<input type="checkbox"/>	Ventana	<input type="checkbox"/>	Essex	<input checked="" type="checkbox"/>
Bay Star	<input type="checkbox"/>	Dutch Star	<input checked="" type="checkbox"/>	King Aire	<input checked="" type="checkbox"/>
Canyon Star	<input type="checkbox"/>	Mountain Aire	<input checked="" type="checkbox"/>	Other	<input type="checkbox"/>
Ventana LE	<input type="checkbox"/>	London Aire	<input checked="" type="checkbox"/>		

### DESCRIPTION

Spartan Motors USA, Inc. has decided that a defect relating to motor vehicle safety exists in specific motor homes built on Spartan chassis. In response, Newmar Corporation is publishing a recall:  
NHTSA #16V 810 TC #2016-543.

**Issue:** On certain motorhomes, wires in the throttle circuit were not shielded properly during manufacturing. This could result in an incorrect throttle setting above or below the commanded throttle setting/input, which may result in a loss of throttle or inadvertent acceleration of the throttle. This condition, depending on the driver's reaction and traffic conditions, may increase the risk of a crash and/or property damage.

**Correction:** Authorized Spartan service facilities will supply an overlay harness with the wires shielded to the proper specification.

**Units affected:** See the attached population list for specific unit and VIN numbers.

### RECOMMENDED ACTION

**Repair Procedure:** Contact Spartan Motors to locate and schedule the recall procedure at an authorized Spartan service facility. Spartan Motors has provided the attached work instructions. To obtain necessary parts and/or verify the recall status, please call (800)543-4277, and press option "0" to provide the VIN number (last 8 digits) and mileage of the unit. If you have technical questions, please call Spartan Chassis Customer Product Support Department at (800)393-8861.

**Flat Rate Code:** 16V 810      **Labor Time:** 5.0 hrs (as determined by Spartan)

**Note:** Newmar will not be authorizing this repair. Spartan Motors will authorize and schedule this repair. If you need help contacting Spartan Motors, call Newmar at (866)290-5371 for assistance.

***Please read this bulletin in its entirety prior to beginning any diagnosis or repairs.***



WHEN YOU KNOW THE DIFFERENCE

# NEWMAR CORPORATION

NEWMARCORP.COM

Date: November 21, 2016  
Re: Newmar Corporation – Motor Vehicle Recall Notification

---

Subject: Recall Campaign No.: 16V 810

This notice is sent to you as a Newmar Dealer in accordance with the requirements of the National Traffic and Motor Vehicle Safety Act. Newmar Corporation has decided that a defect which relates to motor vehicle safety exists in specific Newmar recreational vehicles.

The National Traffic and Motor Vehicle Safety Act requires that each vehicle which is subject to a recall campaign of this type must be satisfactorily repaired within a reasonable time after the owner has tendered it for repair. A failure to adequately repair within 60 days after tender of a vehicle is prima facie evidence of failure to repair within a reasonable time. To avoid providing these problematic solutions, every effort must be made to promptly schedule an appointment with each owner and to repair their vehicle as soon as possible. Vehicle owners are being notified of this recall. If the condition is not remedied within a reasonable time, they are instructed on how to contact the National Highway Traffic Safety Administration.

## **REASON FOR THIS RECALL**

*Newmar Corporation has decided that a defect which relates to motor vehicle safety exists in specific motorhomes built on Spartan chassis. This recall is the result of information provided to us by Spartan Motors USA.*

On certain motorhomes, wires in the throttle circuit were not shielded properly during manufacturing. This could result in a throttle setting above or below the commanded throttle setting/input. An incorrect setting for the throttle input could result in a loss of throttle or inadvertent acceleration of the throttle which, depending on the driver's reactions and traffic conditions, could increase the risk of a crash and/or property damage. Correction: Dealers will supply an overlay harness with the wires shielded to the proper specification.

**The motorhomes require immediate service. Continued use poses a potential safety hazard.**

Motorhomes included in this recall: 2017 model year Dutch Star, Mountain Aire, London Aire, Essex and King Aire.

## **DEALER CAMPAIGN RESPONSIBILITY**

***Dealers are to provide to all customers/owner vehicles the service of completing this campaign at no charge to the customer/owner regardless of vehicle age, vehicle mileage, or ownership at the time of repair.***

## **REPAIR PROCEDURE**

Please reference Spartan Motors work instructions enclosed.

**If you should have any questions please contact the Newmar service department at: 1-866-290-5371.**

Thank you for your cooperation.

Sincerely,

Newmar Corporation



WHEN YOU KNOW THE DIFFERENCE

# NEWMAR CORPORATION

NEWMARCORP.COM

Date: November 21, 2016  
Re: Newmar Corporation – Motor Vehicle Recall Notification

---

Subject: Recall Campaign No.: # 2016-543

This notice is sent to you as a Newmar Dealer in accordance with the requirements of the Canada Motor Vehicle Safety Act. Newmar Corporation has decided that a defect which relates to motor vehicle safety exists in specific Newmar recreational vehicles.

Each vehicle which is subject to a recall campaign of this type must be satisfactorily repaired within a reasonable time after the owner has tendered it for repair. A failure to adequately repair within 60 days after tender of a vehicle is prima facie evidence of failure to repair within a reasonable time. To avoid providing these problematic solutions, every effort must be made to promptly schedule an appointment with each owner and to repair their vehicle as soon as possible. Vehicle owners are being notified of this recall. If the condition is not remedied within a reasonable time, they are instructed to contact Transport Canada.

## **REASON FOR THIS RECALL**

*Newmar Corporation has decided that a defect which relates to motor vehicle safety exists in specific motorhomes built on Spartan chassis. This recall is the result of information provided to us by Spartan Motors USA.*

On certain motorhomes, wires in the throttle circuit were not shielded properly during manufacturing. This could result in a throttle setting above or below the commanded throttle setting/input. An incorrect setting for the throttle input could result in a loss of throttle or inadvertent acceleration of the throttle which, depending on the driver's reactions and traffic conditions, could increase the risk of a crash and/or property damage. Correction: Dealers will supply an overlay harness with the wires shielded to the proper specification.

**These motorhomes require immediate service. Continued use poses a potential safety hazard.**

Motorhomes included in this recall: 2017 Dutch Star, London Aire and Essex built between 5/27/2016 and 8/1/2016.

## **DEALER CAMPAIGN RESPONSIBILITY**

***Dealers are to provide to all customers/owner vehicles the service of completing this campaign at no charge to the customer/owner regardless of vehicle age, vehicle mileage, or ownership at the time of repair.***

## **REPAIR PROCEDURE**

Please reference Spartan Motors work instructions enclosed.

**If you should have any questions please contact the Newmar service department at: 1-866-290-5371.**

Thank you for your cooperation.

Sincerely,

Newmar Corporation



# Recall Service Bulletin



**DATE:** 11-02-16

**APPLIES TO:** This Recall service bulletin applies to motorhome chassis, model year 2017, K2 and K3 models built between March 24, 2016 and August 31, 2016.

**NHTSA/TC Id:** 16V-776

**CONDITION:** Certain wires in the throttle circuit were not twisted which could result in a throttle setting above or below the commanded throttle setting/input.

**CORRECTION:** Adding an overlay harness with properly twisted wiring.

**LABOR ALLOCATION:** Entegra – 3 hrs.  
Newmar & Foretravel – 5 hrs.

**CLASSIFICATION:** V3

**PARTS NEEDED:**

<u>QTY</u>	<u>Part Number</u>	<u>Description</u>
1	S-2562-001	Kit-S/R Harn Throttle Overlay (Williams Pedal)

**Kit # S-2562-001 for Newmar Coaches Contains:**

<u>QTY</u>	<u>Part Number</u>	<u>Description</u>
1	3995-GG5-001	Harn-S/R Throttle Overlay (Williams Pedal)
1	0411-310-1605	Deutsch Contact Removal Tool
1	RSB16-500-003	Instruction Document

---

<u>QTY</u>	<u>Part Number</u>	<u>Description</u>
1	S-2562-002	Kit-S/R Harn Throttle Overlay (Konsberg Pedal)

**Kit # S-2562-002 for Entegra and Foretravel Coaches Contains:**

<u>QTY</u>	<u>Part Number</u>	<u>Description</u>
1	3995-GG5-002	Harn-S/R Throttle Overlay (Konsberg Pedal)
1	0411-310-1605	Deutsch Contact Removal Tool
1	RSB16-500-003	Instruction Document

Service Bulletins are intended for use by Professional Technicians only. They are written to guide Professional Technicians in performing service to vehicles of specific nature in conjunction with industry standards. Professional Technicians are appropriately trained on industry standards and have the tools and equipment to perform procedures safely and properly.



## Recall Service Bulletin



### GENERAL INSTRUCTIONS:

Thoroughly review entire service bulletin before starting work. If there are questions or concerns with steps defined in this service bulletin, contact Spartan Motors USA, Inc. Customer & Product Support Group.

All applicable industry safety standards must be followed when performing work identified in this procedure.

**This modification must be performed at a Spartan Motors service center. For assistance locating a service center please call Spartan Motors at 855.589.9836 with your current mileage. Steps will be taken to ensure the recall is performed at the nearest authorized service center. You can also find a Spartan Motors service center most convenient to you by visiting [http://spartanchassis.com/cps/service/service\\_centers.asp](http://spartanchassis.com/cps/service/service_centers.asp). When choosing the service center in the city most convenient to you, ensure the facility has the Cummins Authorized icon in the type of services provided list. To confirm the repair is performed appropriately, the use of Cummins INSITE software is required in the process.**

### STEP-BY-STEP INSTRUCTIONS for NEWMAR COACHES:

1. Identify and disconnect throttle pedal connector, Item ④ in FIG. 3-2, from throttle assembly. Pull back loom 12 inches over wiring terminated into throttle pedal connector. Verify wiring consists of 6 discreet wires (untwisted) then go to step 2. If wiring consists of 2 twisted triplets (refer to FIG. 3-2), replace loom over wiring and reconnect throttle pedal connector, Item ④. No further action is required.
2. Pull back existing throttle pedal connector and stow/tape it back onto existing harness.
3. Connect new throttle pedal connector, Item ④, of new 3995-GG5-001 overlay harness into throttle assembly. Refer to FIG. 3-2.
4. Route and secure as necessary new 3995-GG5-001 overlay harness along existing harness to forward left electrical compartment located on vehicle's exterior forward of left front tire.
5. Locate and disconnect main chassis harness interconnect, Item ①, from forward electrical compartment disconnect. Refer to FIG. 3-2
6. Using Deutsch contact removal tool, remove circuits from disconnected Item ①, cavities O, P, K, G, U, and T. Refer to FIG. 3-1.

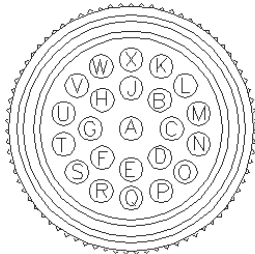
Service Bulletins are intended for use by Professional Technicians only. They are written to guide Professional Technicians in performing service to vehicles of specific nature in conjunction with industry standards. Professional Technicians are appropriately trained on industry standards and have the tools and equipment to perform procedures safely and properly.



# Recall Service Bulletin



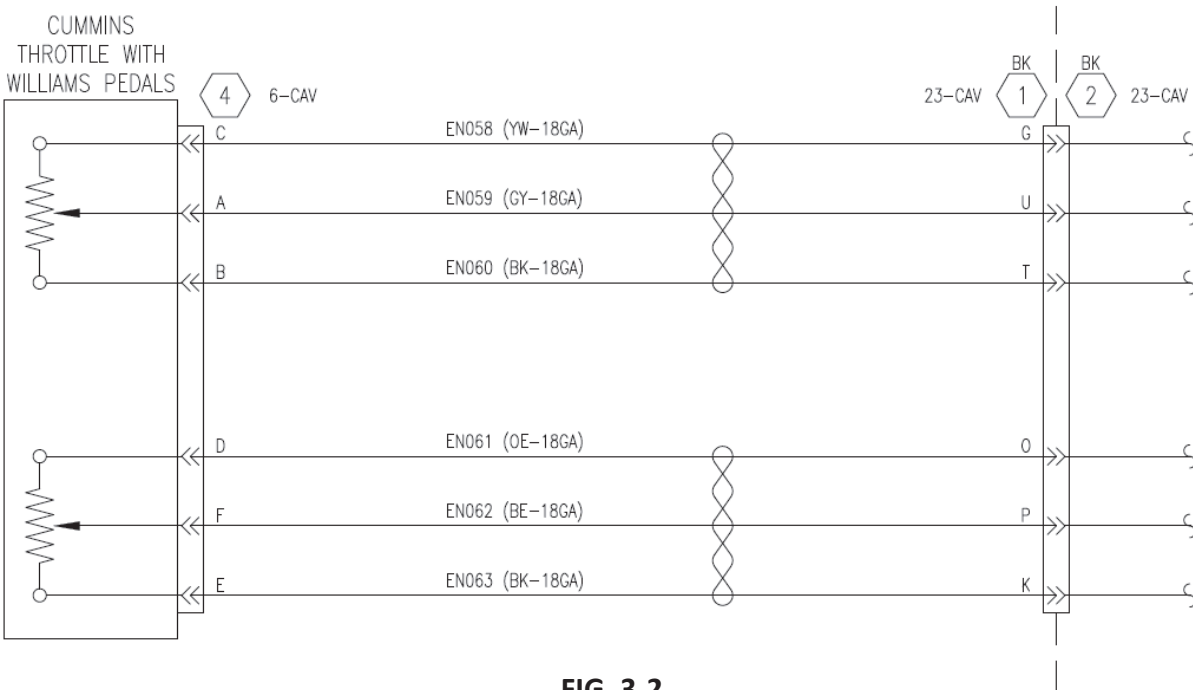
1  
REF ONLY - EXISTING



ITEM: 1						
MAIN CHASSIS HARNESS INTERCONNECT - EXISTING						
TERMINAL: 0462-2D1-16141						
DEUTSCH						
OPT: ALL						
MAP: E9						
CAV	CIRCUIT	SIZE (mm <sup>2</sup> )	MAT.	COLOR	DESCRIPTION	WIRES NOTE
O	EN061	0.8	TXL	OE	SENSOR SUPPLY 5 V	TWT-16
P	EN062	0.8	TXL	BE	ACCRTN POSN SEN 2	TWT-16
K	EN063	0.8	TXL	BK	ECM RETURN SEN	TWT-16
G	EN058	0.8	TXL	YW	ACCRTN POSN SEN 1 SC	TWT-15
U	EN059	0.8	TXL	GY	ACCRTN POSN SEN 1	TWT-15
T	EN060	0.8	TXL	BK	ACCRTN POSN SEN 1 RE	TWT-15
NOTES:						

**FIG. 3-1**

- Cut off contacts from removed circuits, individually heat shrink, and pull/tape back onto existing harness.
- Insert new circuits from new overlay harness into existing main chassis harness interconnect connector Item 1. Refer to FIG. 3-1. Each wire is tagged with a label depicting which cavity it belongs in. Refer to FIG. 3-2. Note that the wiring/pin out does not change.




**FIG. 3-2**

Service Bulletins are intended for use by Professional Technicians only. They are written to guide Professional Technicians in performing service to vehicles of specific nature in conjunction with industry standards. Professional Technicians are appropriately trained on industry standards and have the tools and equipment to perform procedures safely and properly.



## Recall Service Bulletin



9. Re-connect main chassis harness interconnect connector, Item , to firewall disconnect. Refer to FIG. 3-2.
10. Assure new overlay harness is secured to existing harness as required throughout its entire run. Tape back any extra length as required.
11. Using Cummins® INSITE™, verify that no fault codes are generated at key-up. Also verify that appropriate values are seen in regards to throttle pedal position.

Service Bulletins are intended for use by Professional Technicians only. They are written to guide Professional Technicians in performing service to vehicles of specific nature in conjunction with industry standards. Professional Technicians are appropriately trained on industry standards and have the tools and equipment to perform procedures safely and properly.

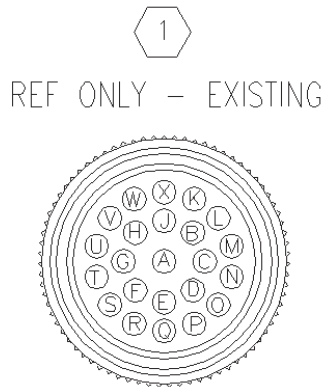


# Recall Service Bulletin



## STEP-BY-STEP INSTRUCTIONS for ENTEGRA COACHES:

1. Identify and disconnect throttle pedal connector, Item **④** in FIG 6-1, from throttle assembly. Pull back loom 12 inches over wiring terminated into throttle pedal connector. Verify wiring consists of 6 discreet wires (untwisted) then go to step 2. If wiring consists of 2 twisted triplets (refer to FIG. 6-1), replace loom over wiring and reconnect throttle pedal connector, Item **④**. No further action is required.
2. Pull back existing throttle pedal connector and stow/tape it back onto existing harness.
3. Connect new throttle pedal connector, Item **④** , of new 3995-GG5-002 overlay harness into throttle assembly. Refer to FIG. 6-1.
4. Route and secure as necessary new 3995-GG5-002 overlay harness along existing harness to firewall disconnect located forward of driver's position.
5. Locate and disconnect main chassis harness interconnect, Item **①** , from firewall disconnect. Refer to FIG. 6-1.
6. Using Deutsch contact removal tool, remove circuits from disconnected Item **①** cavities O, P, K, G, U, and T. Refer to FIG. 5-1.



ITEM: 1						
MAIN CHASSIS HARNESS INTERCONNECT – EXISTING						
TERMINAL: 0462-201-16141						
DEUTSCH						
OPT: ALL						
MAP: E9						
CAV	CIRCUIT	SIZE (mm <sup>2</sup> )	MAT.	COLOR	DESCRIPTION	WIRES NOTE
O	EN061	0.8	TXL	OE	SENSOR SUPPLY 5 V	TWT-16
P	EN062	0.8	TXL	BE	ACCRN POSN SEN 2	TWT-16
K	EN063	0.8	TXL	BK	ECM RETURN SEN	TWT-16
G	EN058	0.8	TXL	YW	ACCRN POSN SEN 1 SC	TWT-15
U	EN059	0.8	TXL	GY	ACCRN POSN SEN 1	TWT-15
T	EN060	0.8	TXL	BK	ACCRN POSN SEN 1 RE	TWT-15
NOTES:						

**FIG. 5-1**

7. Cut off contacts from removed circuits, individually heat shrink, and pull/tape back onto existing harness.

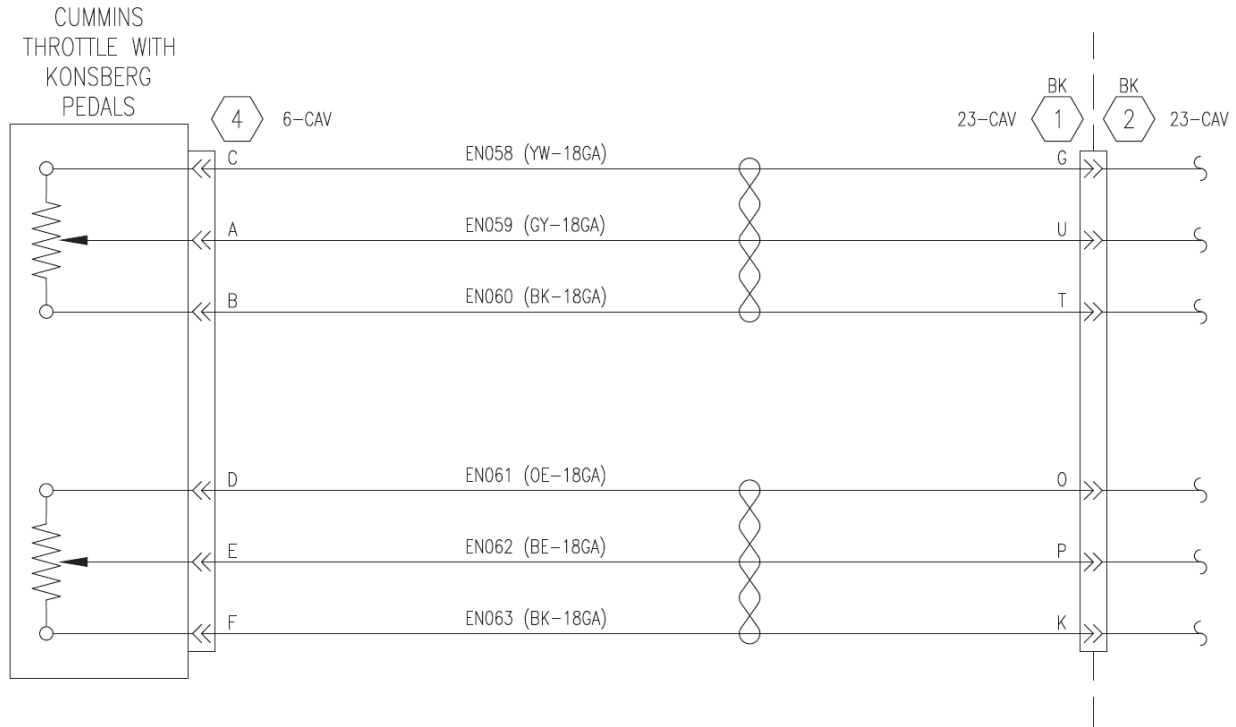
Service Bulletins are intended for use by Professional Technicians only. They are written to guide Professional Technicians in performing service to vehicles of specific nature in conjunction with industry standards. Professional Technicians are appropriately trained on industry standards and have the tools and equipment to perform procedures safely and properly.



# Recall Service Bulletin



- Insert new circuits from new overlay harness into existing main chassis harness interconnect connector Item **1** . Refer to FIG. 5-1. Each wire is tagged with a label depicting which cavity it belongs in. Refer to FIG. 6-1. Note that the wiring/pin out does not change.



**FIG. 6-1**

- Re-connect main chassis harness interconnect connector, Item **1** , to firewall disconnect. Refer to FIG. 6-1.
- Assure new overlay harness is secured to existing harness as required throughout its entire run. Tape back any extra length as required.
- Using Cummins® INSITE™, verify that no fault codes are generated at key-up. Also verify that appropriate values are seen in regards to throttle pedal position.

Service Bulletins are intended for use by Professional Technicians only. They are written to guide Professional Technicians in performing service to vehicles of specific nature in conjunction with industry standards. Professional Technicians are appropriately trained on industry standards and have the tools and equipment to perform procedures safely and properly.

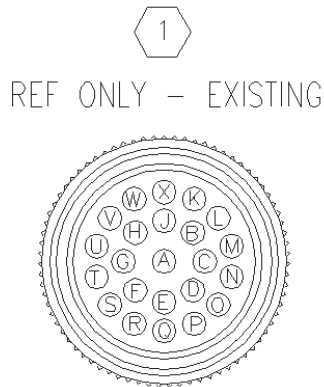


# Recall Service Bulletin



## STEP-BY-STEP INSTRUCTIONS for FORETRAVEL COACHES:

1. Identify and disconnect throttle pedal connector, Item ④ in FIG. 8-1, from throttle assembly. Pull back loom 12 inches over wiring terminated into throttle pedal connector. Verify wiring consists of 6 discreet wires (untwisted) then go to step 2. If wiring consists of 2 twisted triplets (refer to FIG. 8-1), replace loom over wiring and reconnect throttle pedal connector, Item ④. No further action is required.
2. Pull back existing throttle pedal connector and stow/tape it back onto existing harness.
3. Connect new throttle pedal connector, Item ④, of new 3995-GG5-002 overlay harness into throttle assembly. Refer to FIG. 8-1.
4. Route and secure as necessary new 3995-GG5-002 overlay harness along existing harness to forward left electrical compartment located on vehicle's exterior forward of left front tire.
5. Locate and disconnect main chassis harness interconnect, Item ①, from forward electrical compartment disconnect. Refer to FIG. 8-1.
6. Using Deutsch contact removal tool, remove circuits from disconnected Item ① cavities O, P, K, G, U, and T. Refer to FIG. 7-1.



ITEM: 1						
MAIN CHASSIS HARNESS INTERCONNECT - EXISTING						
TERMINAL: 0462-201-16141						
DEUTSCH						
OPT: ALL						
MAP: E9						
CAV	CIRCUIT	SIZE (mm <sup>2</sup> )	MAT.	COLOR	DESCRIPTION	WIRES NOTE
O	EN061	0.8	TXL	OE	SENSOR SUPPLY 5 V	TWT-16
P	EN062	0.8	TXL	BE	ACCRTN POSN SEN 2	TWT-16
K	EN063	0.8	TXL	BK	ECM RETURN SEN	TWT-16
G	EN058	0.8	TXL	YW	ACCRTN POSN SEN 1 SC	TWT-15
U	EN059	0.8	TXL	GY	ACCRTN POSN SEN 1	TWT-15
T	EN060	0.8	TXL	BK	ACCRTN POSN SEN 1 RE	TWT-15
NOTES:						

**FIG. 7-1**

7. Cut off contacts from removed circuits, individually heat shrink, and pull/tape back onto existing harness.

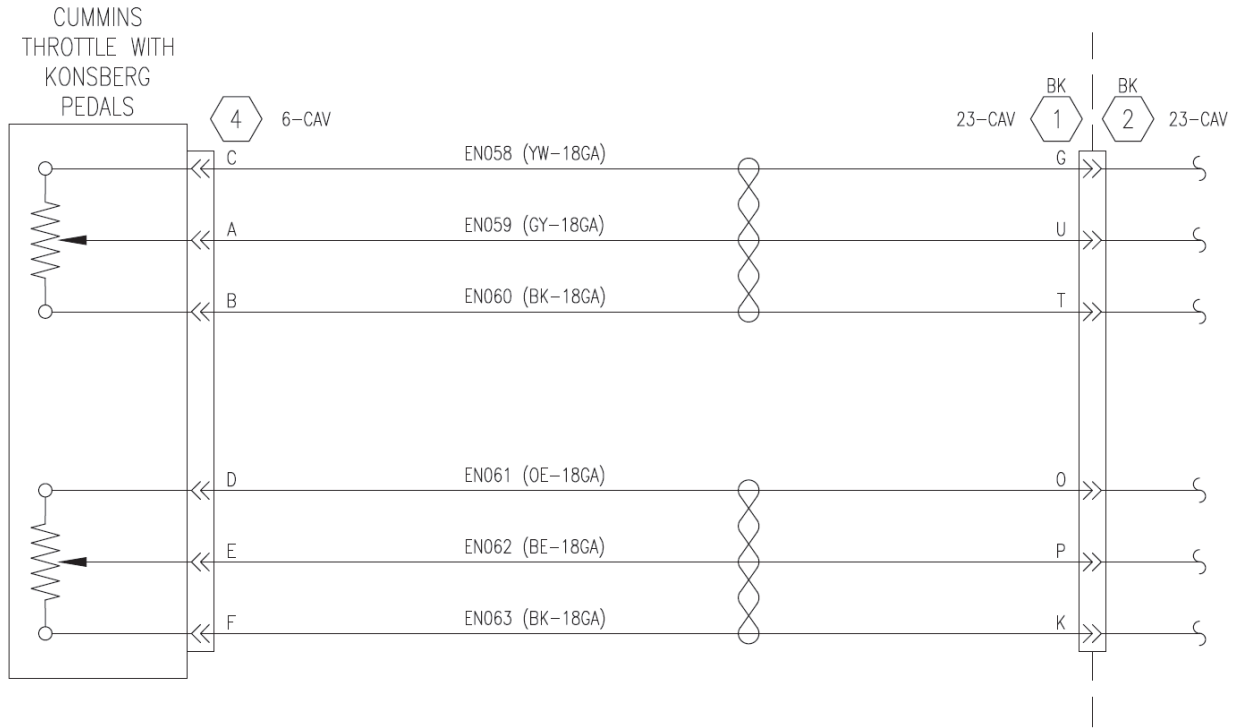
Service Bulletins are intended for use by Professional Technicians only. They are written to guide Professional Technicians in performing service to vehicles of specific nature in conjunction with industry standards. Professional Technicians are appropriately trained on industry standards and have the tools and equipment to perform procedures safely and properly.



# Recall Service Bulletin



- Insert new circuits from new overlay harness into existing main chassis harness interconnect connector Item **1** . Refer to FIG. 7-1. Each wire is tagged with a label depicting which cavity it belongs in. Refer to FIG. 8-1. Note that the wiring/pin out does not change.



**FIG. 8-1**

- Re-connect main chassis harness interconnect connector, Item **1** , to forward electrical compartment disconnect. Refer to FIG. 8-1.
- Assure new overlay harness is secured to existing harness as required throughout its entire run. Tape back any extra length as required.
- Using Cummins® INSITE™, verify that no fault codes are generated at key-up. Also verify that appropriate values are seen in regards to throttle pedal position.

Service Bulletins are intended for use by Professional Technicians only. They are written to guide Professional Technicians in performing service to vehicles of specific nature in conjunction with industry standards. Professional Technicians are appropriately trained on industry standards and have the tools and equipment to perform procedures safely and properly.

VIN Number	Prod#	Year	Brand	Type	Floor	Chassis	Date In	Date Off
4VZVU1E99HC082214	501339	2017	LA	DP	4533	S	5/12/2016	5/20/2016
4VZVU1E95HC082436	501445	2017	LA	DP	4553	S	6/24/2016	7/12/2016
4VZVU1E98HC082446	501446	2017	LA	DP	4519	S	7/11/2016	7/19/2016
4VZVU1E96HC082445	501447	2017	LA	DP	4519	S	6/3/2016	6/13/2016
4VZVU1E93HC082502	501458	2017	LA	DP	4539	S	8/10/2016	8/18/2016
4VZVU1E91HC082613	501462	2017	LA	DP	4519	S	8/26/2016	9/6/2016
4VZVU1E92HC082216	530371	2017	KG	DB	4519	S	5/13/2016	5/25/2016
4VZVU1E92HC082278	530372	2017	KG	DB	4519	S	7/12/2016	7/20/2016
4VZVU1E90HC082277	530373	2017	KG	DB	4584	S	6/20/2016	6/28/2016
4VZVU1E95HC082369	530374	2017	KG	DB	4519	S	8/2/2016	8/10/2016
4VZVU1E98HC082219	530375	2017	KG	DB	4533	S	7/28/2016	8/5/2016
4VZVU1E95HC082498	530377	2017	KG	DB	4513	S	8/15/2016	8/23/2016
4VZVU1E95HC082565	530381	2017	KG	DB	4553	S	9/14/2016	9/22/2016
4VZAU1D99HC082438	606067	2017	DS	DP	4369	S	7/13/2016	7/21/2016
4VZAU1D96HC082526	606072	2017	DS	DP	4369	S	8/5/2016	8/12/2016
4VZAU1D91HC082532	606073	2017	DS	DP	4369	S	8/12/2016	8/19/2016
4VZAU1D9XHC082447	606075	2017	DS	DP	4369	S	7/14/2016	7/22/2016
4VZAU1D95HC082601	606087	2017	DS	DP	4381	S	8/16/2016	8/23/2016
4VZAU1D93HC082533	606089	2017	DS	DP	4054	S	7/22/2016	7/29/2016
4VZAU1D91HC082448	606090	2017	DS	DP	4369	S	7/22/2016	8/1/2016
4VZAU1D93HC082564	606091	2017	DS	DP	4369	S	8/12/2016	8/22/2016
4VZAU1D98HC082527	606092	2017	DS	DP	4369	S	8/5/2016	8/15/2016
4VZAU1D99HC082536	606101	2017	DS	DP	4018	S	7/26/2016	8/2/2016
4VZAU1D98HC082561	606102	2017	DS	DP	4018	S	8/1/2016	8/9/2016
4VZAU1D90HC082537	606103	2017	DS	DP	4018	S	7/26/2016	8/3/2016
4VZAU1D90HC082599	606104	2017	DS	DP	4369	S	8/10/2016	8/17/2016
4VZAU1D97HC082602	606105	2017	DS	DP	4369	S	8/17/2016	8/25/2016
4VZAU1D97HC082616	606106	2017	DS	DP	4369	S	8/22/2016	8/30/2016
4VZAU1D99HC082598	606110	2017	DS	DP	4369	S	8/9/2016	8/17/2016
4VZAU1D97HC082499	606114	2017	DS	DP	4369	S	7/25/2016	8/2/2016
4VZAU1D93HC082600	606133	2017	DS	DP	4369	S	8/10/2016	8/18/2016
4VZAU1D91HC082501	606137	2017	DS	DP	4369	S	7/27/2016	8/4/2016
4VZAU1D99HC082603	606138	2017	DS	DP	4369	S	8/18/2016	8/26/2016
4VZAU1D94HC082525	606139	2017	DS	DP	4369	S	8/2/2016	8/10/2016
4VZAU1D93HC082659	606159	2017	DS	DP	4018	S	8/23/2016	8/31/2016
4VZAU1D98HC082530	606170	2017	DS	DP	4369	S	8/11/2016	8/19/2016
4VZAU1D9XHC082531	606173	2017	DS	DP	4369	S	8/11/2016	8/19/2016
4VZAU1D99HC082617	606174	2017	DS	DP	4369	S	8/24/2016	8/31/2016
4VZAU1D90HC082618	606176	2017	DS	DP	4369	S	8/24/2016	9/1/2016
4VZAU1D98HC082639	606178	2017	DS	DP	4018	S	8/24/2016	9/1/2016
4VZAU1D95HC082534	606186	2017	DS	DP	4018	S	7/18/2016	7/26/2016
4VZAU1D92HC082619	606194	2017	DS	DP	4369	S	8/25/2016	9/2/2016
4VZAU1D90HC082604	606201	2017	DS	DP	4018	S	8/16/2016	8/24/2016
4VZAU1D91HC082529	606205	2017	DS	DP	4369	S	8/8/2016	8/15/2016
4VZAU1D9XHC082528	606206	2017	DS	DP	4311	S	8/9/2016	8/17/2016
4VZAU1D91HC082661	606218	2017	DS	DP	4369	S	9/7/2016	9/15/2016

VIN Number	Prod#	Year	Brand	Type	Floor	Chassis	Date In	Date Off
4VZAU1D9XHC082660	606222	2017	DS	DP	4018	S	8/29/2016	9/6/2016
4VZVU1E9XHC082285	801212	2017	EX	DP	4519	S	5/24/2016	6/3/2016
4VZVU1E92HC082314	801219	2017	EX	DP	4598	S	9/6/2016	9/14/2016
4VZVU1E9XHC082450	801220	2017	EX	DP	4553	S	9/9/2016	9/19/2016
4VZVU1E91HC082451	904485	2017	MA	DP	4553	S	8/15/2016	8/23/2016

Canadian

4VZAU1D93HC082449	606080	2017	DS	DP	4369	S	7/15/2016	7/22/2016
4VZAU1D97HC082535	606070	2017	DS	DP	4018	S	7/21/2016	7/29/2016
4VZAU1D9XHC082500	606189	2017	DS	DP	4369	S	7/25/2016	8/1/2016
4VZVU1E90HC082313	801214	2017	EX	DP	4519	S	6/6/2016	6/15/2016
4VZVU1E93HC082452	606054	2017	DS	DP	4054	S	7/13/2016	7/20/2016
4VZVU1E94HC082217	501442	2017	LA	DP	4533	S	5/27/2016	6/8/2016
4VZVU1E97HC082437	501454	2017	LA	DP	4519	S	6/29/2016	7/15/2016