



Countries: CANADA, UNITED STATES Document ID: IK1201332
 Availability: ISIS Revision: 0
 Major System: ENGINES Created: 4/11/2016
 Current Language: English Last Modified: 4/20/2016
 Other Languages: NONE Author: Caleb Iverson
 Viewed: 216

[Less Info](#)

Hide Details

Coding Information

Copy Link 	Copy Relative Link 	Bookmark View My Bookmarks	Add to Favorites 	Print 	Provide Feedback 	Helpful 6	Not Helpful 0
---------------	------------------------	---	----------------------	-----------	----------------------	------------------	----------------------

Title: High-pressure turbocharger outlet blockage

Applies To: 2015 Model N13 Engines

CHANGE LOG

Please refer to the change log text box below for recent changes to this article:

04/19/2016 - Initial Article Release

DESCRIPTION

This document should be used in conjunction with the FCAPS: fault codes 102-10 and 102-18. And will guide the user through identifying low boost condition caused by a casting defect in the HP turbocharger outlet pipe.

SYMPTOM(s)

Diagnostic Trouble Code(s) & Dashboard Indicator Light(s):

DTC/Light	Description
SPN 102 FMI 10 (link to FCAP) Active, Inactive, Pending	Boost slow response fault
SPN 102 FMI 18 (link to FCAP) Active, Inactive, Pending	Intake Manifold Pressure Underboost

Customer Observations or Concerns:

MIL - with Active, inactive, or pending status
 Performance - low power

SPECIAL TOOL(s) / SOFTWARE

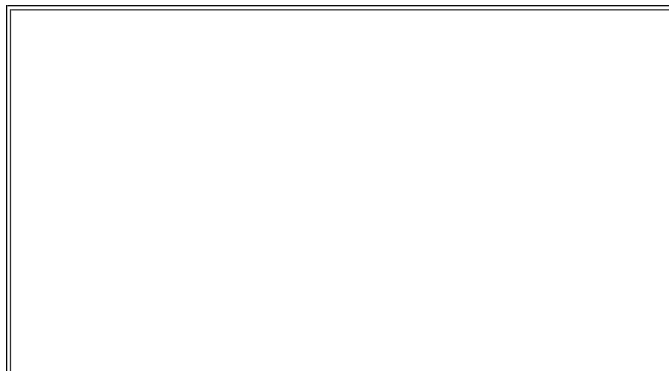
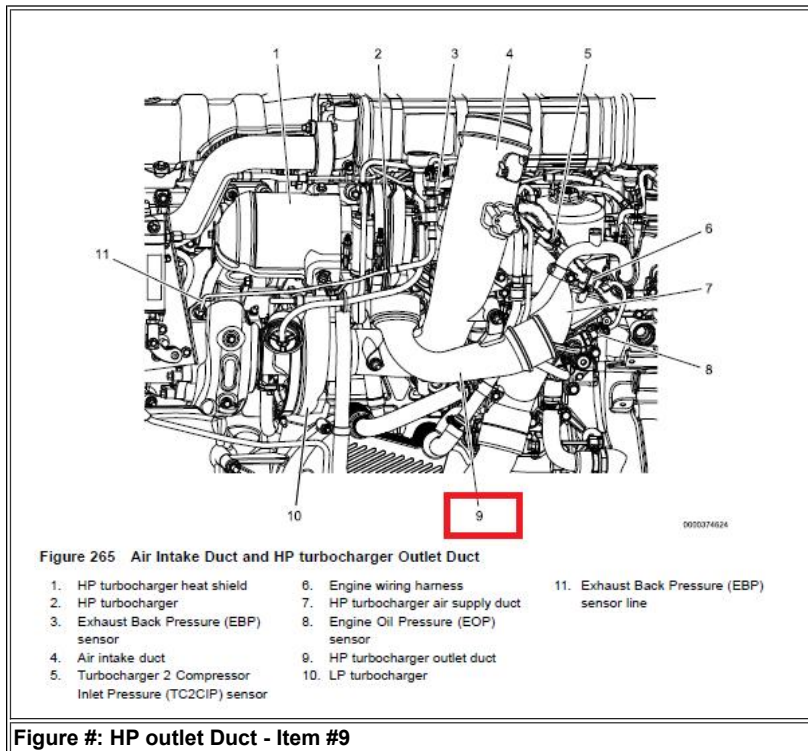
Tool Description	Tool Number	Comments	Instructions
N/A			
N/A			

SERVICE PARTS INFORMATION

Kit Description	Part Number	Quantity Required	Notes
High-pressure turbocharger outlet duct	3005312C2	1	
O-ring	3013030C1	1	

DIAGNOSTIC STEP(s)

Step	Action	Decision
1	<p>Visually inspect the air intake system. Check for Blockage in the High-pressure turbocharger outlet duct. (This step is directly related to step 2 of the diagnostics in the manual for this code. This article simply expounds upon this step to check the air intake piping.) (see figures below for examples of blockage)</p> <p>Is there blockage present?</p>	<p>Yes. Replace High-pressure turbocharger outlet duct, and retest.</p>
		<p>No. Continue diagnostics through FCAP.</p>



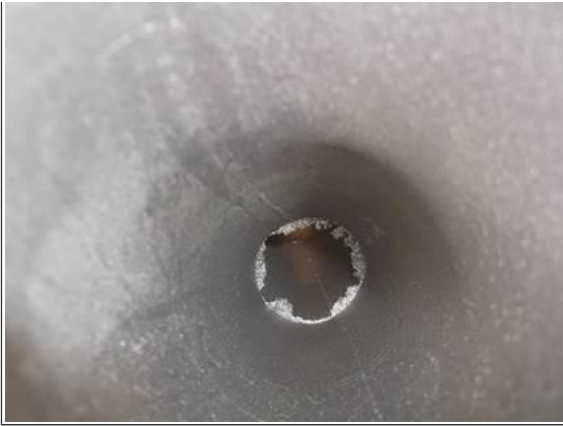


Figure #: Blockage



Figure #: Blockage

REPAIR STEP(s)

REMOVAL PROCEDURE:

Refer to the proper service manual for removal instructions.

INSTALLATION PROCEDURE:

Refer to the proper service manual for installations instructions.

WARRANTY INFORMATION

Warranty Claim Coding:

Group:	12000 - Description
Noun:	352 - Description

Standard Repair Time(s):

Step	Repair	Model	Engine	SRT	Hours
1	HP Turbocharger outlet duct R&R or R&I	All Models	All Models	A12-2230	0.3

Claim SRT Example:

Claim Comment Suggestion:

Special Requirement(s):

OTHER RESOURCES

[Master Service Information Site](#)

 Hide Details

Feedback Information

Viewed: 215

Helpful: 6

Not Helpful: 0

No Feedback Found

Copyright © 2016 Navistar, Inc.