



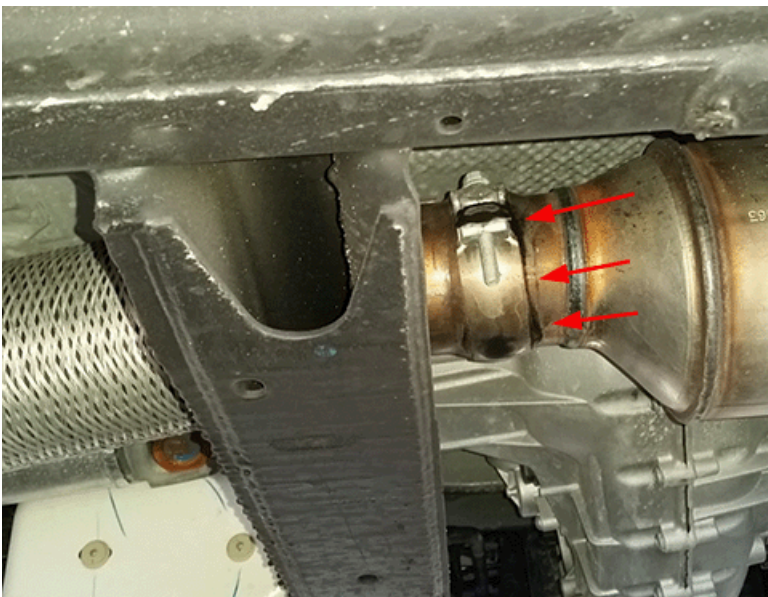
# Service Bulletin

## PRELIMINARY INFORMATION

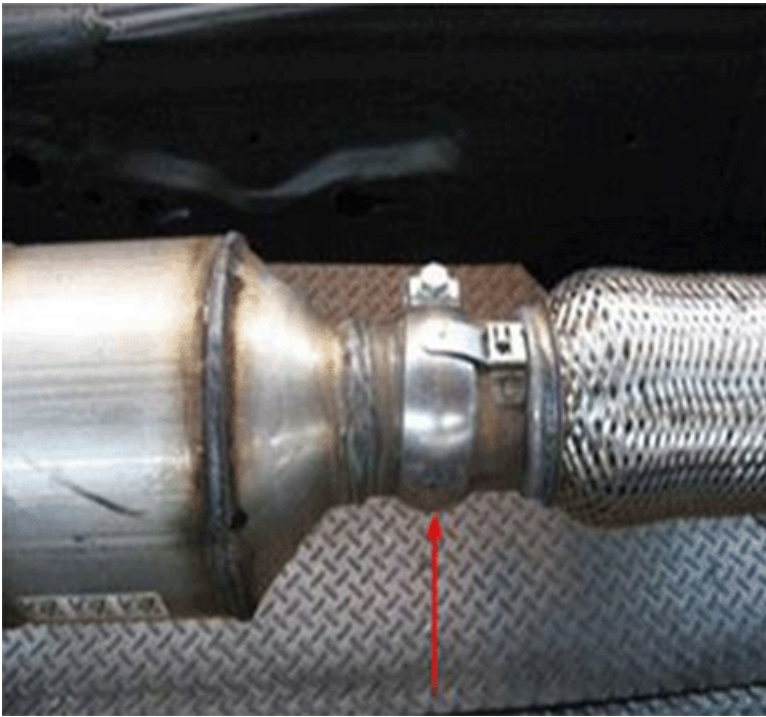
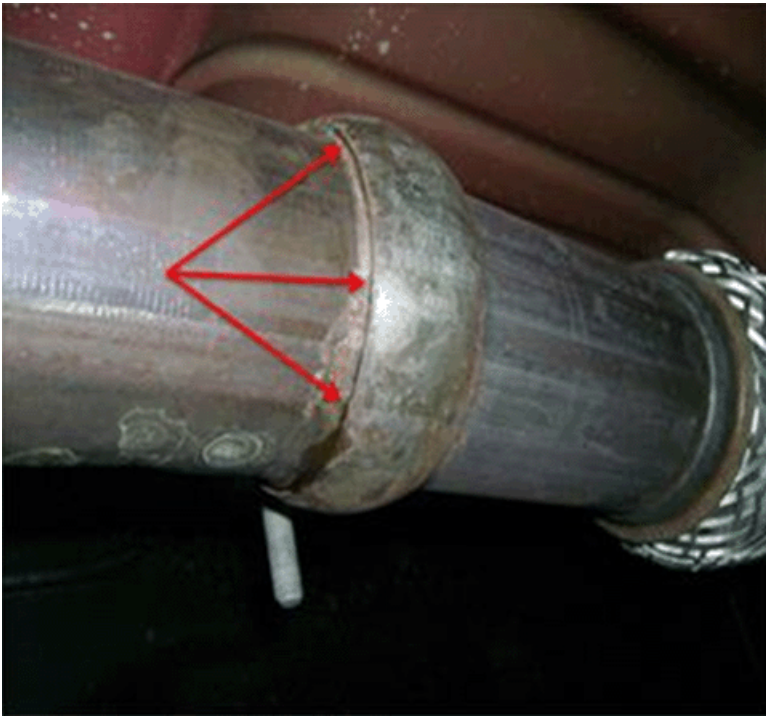
**Subject:** Exhaust Leak, Noisy Exhaust, Rattle, Rumble and/or Noise Mid-Vehicle

Brand:	Model:	Model Year:		VIN:		Engine:	Transmission:
		from	to	from	to		
Cadillac	Escalade Models	2015	2017	SOP	Current	6.2 L86	All
Chevrolet	Silverado 1500	2014	2017	SOP	Current	4.3L LV3 5.3L L83 6.2L L86	All
Chevrolet	Suburban, Tahoe	2015	2017	SOP	Current	5.3L L83	All
Chevrolet	Suburban 3500	2016	2017	SOP	Current	6.0 L96	All
GMC	Sierra 1500	2014	2017	SOP	Current	4.3L LV3 5.3L L83 6.2L L86	All
GMC	Yukon Models	2015	2017	SOP	Current	5.3L L83 6.2L L86	All

<b>Involved Region or Country</b>	North America
<b>Additional RPO/s:</b>	N/A
<b>Condition</b>	Some customers may comment on an exhaust leak, noisy exhaust, or noise mid-vehicle. The noise may be described as a rattle or rumble. May be most noticeable on a cold start.
<b>Cause</b>	This condition may be caused by an unseated pipe to pipe mid-joint connection as seen below



**Correction**



**Note:** Ensure that the pipe flares remain fully seated to each other while tightening the clamp.

1. Remove and discard the exhaust band (Norma) clamp.
2. Install and position a new exhaust band (Norma) clamp to the pipe joint.
3. Firmly push and maintain the pipes together while tightening the exhaust band (Norma) clamp bolt.  
Tighten the clamp bolt to 30 Nm (22 lb. ft.).

**Note:** After the clamp is installed, it does not need to be perpendicular to the pipe. It is acceptable to have a pipe to pipe or clamp angle.

4. Confirm that the clamp edges (both sides and all the way around the clamp) are fully seated on the pipe.
5. Run the engine and inspect the clamp joint to ensure there are no leaks and that the condition is corrected.

## Parts Information

Description	Part Number	Qty
-------------	-------------	-----

Clamp Asm (2.75-in) (4.3L, 5.3L)	20779889	1
Clamp Asm (3.5-in) (6.0L, 6.2L)	20779890	1

## Warranty Information

Labor Operation	Description	Labor Time
4050272	Exhaust System Alignment	Use Published Labor Operation Time

<b>Version</b>	1
<b>Modified</b>	

GM bulletins are intended for use by professional technicians, NOT a "do-it-yourselfer". They are written to inform these technicians of conditions that may occur on some vehicles, or to provide information that could assist in the proper service of a vehicle. Properly trained technicians have the equipment, tools, safety instructions, and know-how to do a job properly and safely. If a condition is described, DO NOT assume that the bulletin applies to your vehicle, or that your vehicle will have that condition. See your GM dealer for information on whether your vehicle may benefit from the information.



WE SUPPORT VOLUNTARY TECHNICIAN CERTIFICATION