



Service Bulletin

PRELIMINARY INFORMATION

Subject: Front Of Seat Cover Loose

Brand:	Model:	Model Year:		VIN:		Engine:	Transmission:
		from	to	from	to		
Chevrolet	Colorado	2016	2016	SORP	G1354852	All	All
GMC	Canyon	2016	2016	SORP	G1354142	All	All

Involved Region or Country	North America
Additional RPO/s:	None
Condition	Front Of Seat Cover Comes Loose
Cause	Seat Frame Hem Flange Too Wide

Correction

Adjust the seat pan hem flange as illustrated below.

Service Procedure

First remove the effected seat and place on a suitable surface with the front of the seat facing toward you. Raise the front of the seat cover, lift the cushion and support with a board or block.



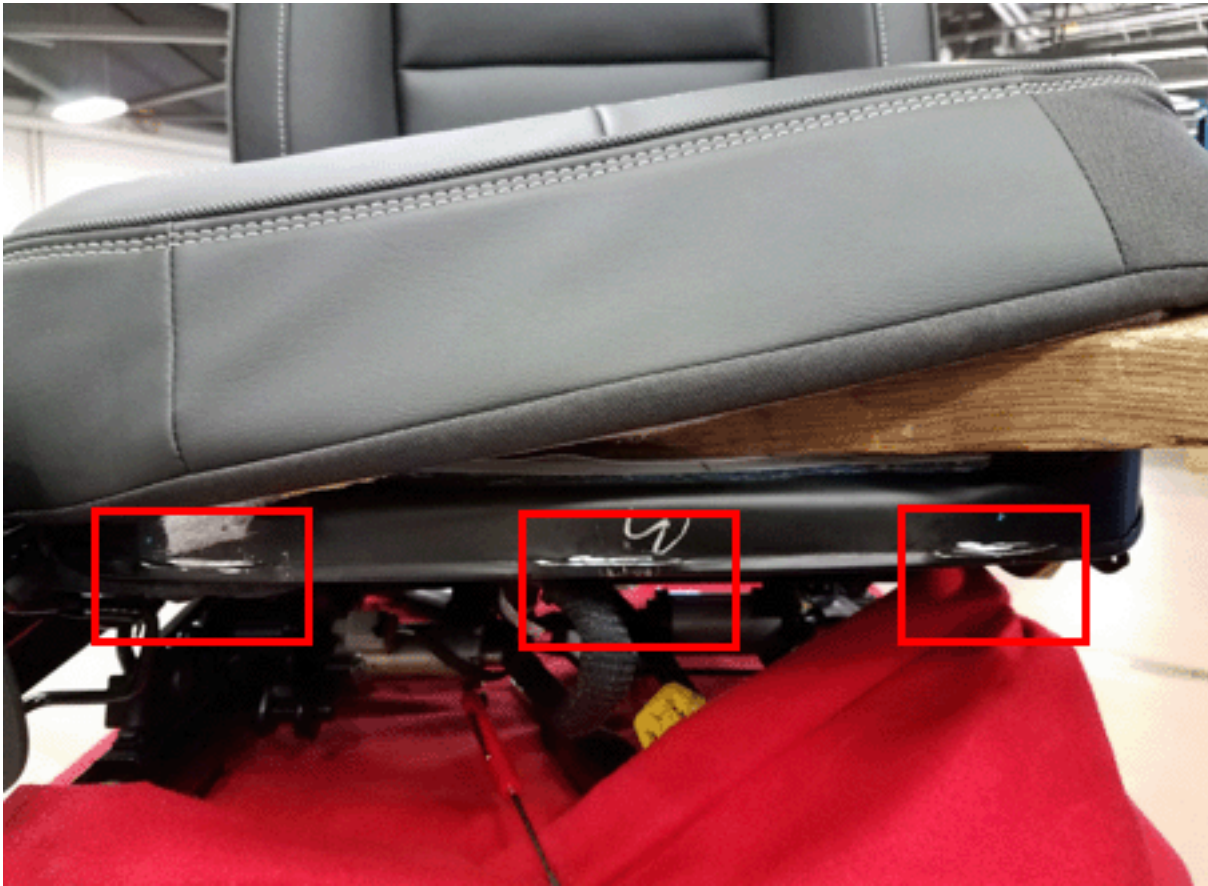
Entirely or partially remove the outboard trim cover and create clearance to the outer corner of the cushion pan hem surface (passenger seat shown).



Using a pair of calipers set to 4 mm , mark the cushion pan flanges in the 3 areas where the profile is protruding away from the rest of the cushion pan (hem fold is open in these locations, not tight to the structure).



Be sure to mark the entire edge of the hem where it stands out from the rest of the pan.



As an extra visual guide, carefully add tape to the flanges, aligned with the scored marks made in the previous step. Add a fender cover, blanket or other protective cover to keep material and debris out of the seat track adjusters.



Use a die grinder and cutting wheel to remove material, reducing the hem height to the 4 mm as previously measured. It's important to remove the material across the entire length of the 3 portions of the flange not folded tightly upon itself.

Again using the calipers check to make sure the flange in the areas cut is between 3-5 mm, if not, continue removing material until this condition is met. Use a deburring tool, pick or small screwdriver to ensure there's no debris, burrs, or other material inside the open areas of the cushion flange that have been cut. Depending on the cut, a tool may be needed adjust the hem back out so that the barb on the plastic J retainer can engage.(1).



Use touchup paint to prevent corrosion in the areas paint was removed. Reattach trim cover and reinstall the seat.

Warranty Information

Labor Operation	Description	Labor Time
7080378*	Perform Seat Pan Hem Flange Adjustment	0.7 hr
	* This is a unique labor operation for bulletin use only.	

Version	2
Modified	11/1/2016 Updated to adjust the measurement specifications.

GM bulletins are intended for use by professional technicians, NOT a "do-it-yourselfer". They are written to inform these technicians of conditions that may occur on some vehicles, or to provide information that could assist in the proper service of a vehicle. Properly trained technicians have the equipment, tools, safety instructions, and know-how to do a job properly and safely. If a condition is described, DO NOT assume that the bulletin applies to your vehicle, or that your vehicle will have that condition. See your GM dealer for information on whether your vehicle may benefit from the information.



WE SUPPORT VOLUNTARY TECHNICIAN CERTIFICATION