



Service Bulletin

TECHNICAL

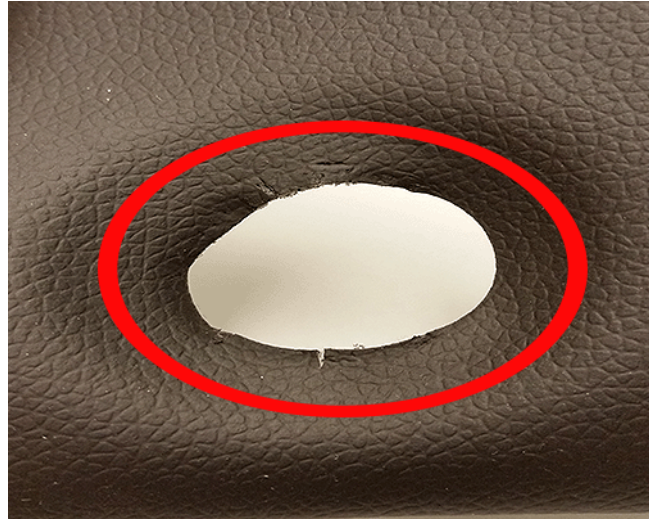
Subject: Ignition and Start (Start/Stop) Switch Sticks, DTC B097B Set

Attention: This Bulletin also applies to vehicles sold in ISRAEL.

Brand:	Model:	Model Year:		VIN:		Engine:	Transmission:
		from	to	from	to		
Chevrolet	Malibu (VIN Z)	2016	2016				

Condition	Some customers may comment that the ignition and start (start/stop) switch is sticking. Technicians may find DTC B097B set or stored in history.
------------------	---

Cause



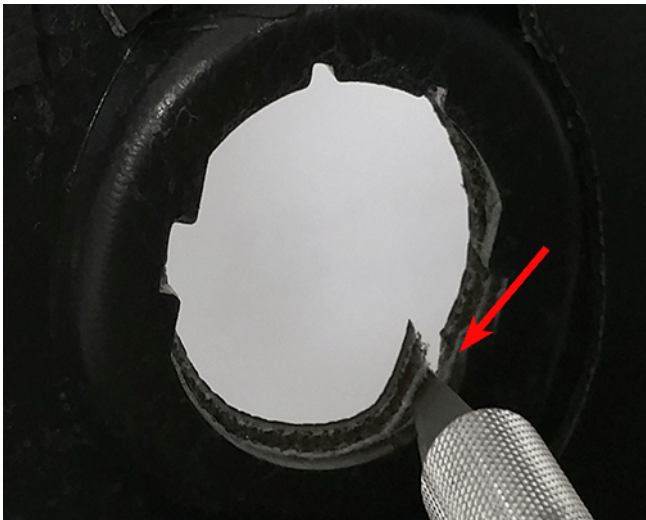
This condition may be due to excess material in the ignition and start switch cavity.

Correction

Remove the excess material inside the cavity of ignition and start (start/stop) switch and install a new ignition and start switch following the steps below:

Service Procedure

1. Remove the instrument panel center trim pad. Refer to *Instrument Panel Center Trim Pad Replacement - Right Side* in SI.
2. Separate the Start/Stop switch from the instrument panel center trim pad and discard old switch. Refer to *Ignition and Start Switch Replacement* in SI.



3. On the back side of the trim pad, use a utility knife and trace the cavity to cut away the excess material.



Note: Once the excess material has been removed, the opening for the switch will look rounded as opposed to an oval shape.

4. Install the new ignition and start switch.

Parts Information

Description	Part Number	Qty
SWITCH, IGN & START	23132462	1

Warranty Information

For vehicles repaired under the Bumper-to-Bumper coverage (Canada Base Warranty coverage), use the following labor operation. Reference the Applicable Warranties section of Investigate Vehicle History (IVH) for coverage information.

Labor Operation	Description	Labor Time
1080348*	Modifying the Trim and Installing New Ignition and Start Switch	0.3 hr
*This is a unique Labor Operation for Bulletin use only. It will not be published in the Labor Time Guide.		

Version	1
Modified	

GM bulletins are intended for use by professional technicians, NOT a "do-it-yourselfer". They are written to inform these technicians of conditions that may occur on some vehicles, or to provide information that could assist in the proper service of a vehicle. Properly trained technicians have the equipment, tools, safety instructions, and know-how to do a job properly and safely. If a condition is described, DO NOT assume that the bulletin applies to your vehicle, or that your vehicle will have that condition. See your GM dealer for information on whether your vehicle may benefit from the information.



WE SUPPORT VOLUNTARY TECHNICIAN CERTIFICATION