



Service Bulletin

TECHNICAL

Subject: Water Leak on Driver and/or Passenger Side Floor

Attention: This Bulletin also applies to any of the models that may be Israel Export vehicles.

This Bulletin replaces PI1464. Please discard PI1464.

Brand:	Model:	Model Year:		Breakpoints:		Engine:	Transmission:
		from	to	from	to		
Buick	LaCrosse	2013	2016	Start of Production 2013	Prior to December 12, 2015	All	All
Chevrolet	Malibu	2013	2015				

Involved Region or Country	ISRAEL
Condition	Some customers may comment on a musty odor inside the driver/passenger compartment and/or water under the carpet near the front dash of the vehicle. This most likely would have occurred after a heavy rain period or going through a car wash.
Cause	This may be caused by a void in the sealer that could allow water to pass from the body structure into the driver/passenger compartment area.
Plant Location	VIN position 11 – F (Fairfax)

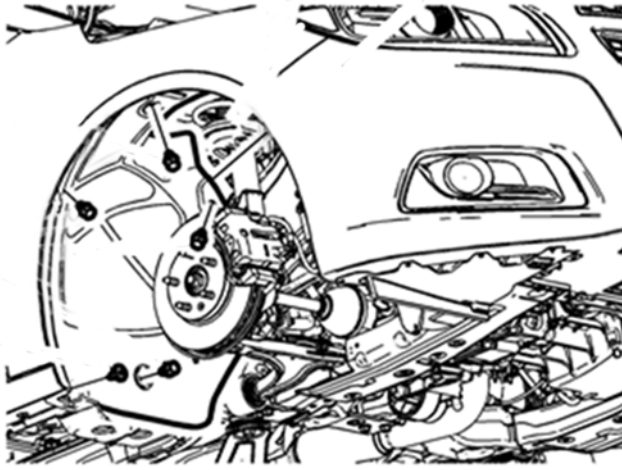
Correction

If the above condition exists, follow the *Service Procedure* below.

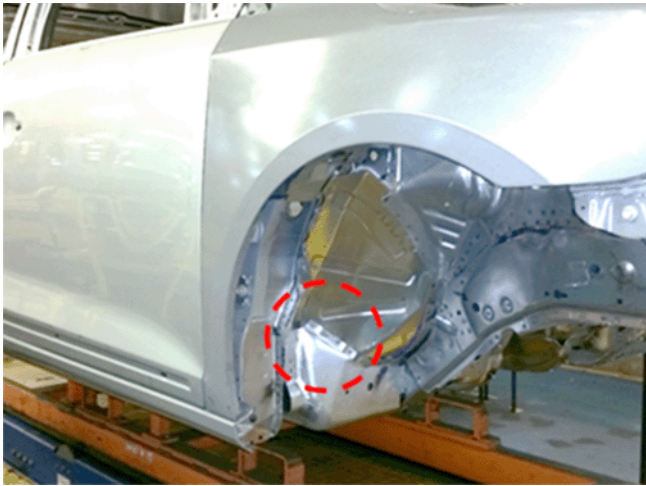
Service Procedure

Note: The beginning recommended diagnosis/repair can pertain to any 2013-2015 Malibu, or any 2013-2016 LaCrosse, built prior to December 12, 2015.

1. Perform normal waterleak test procedures. Refer to *Waterleak Test Preparation* in SI.

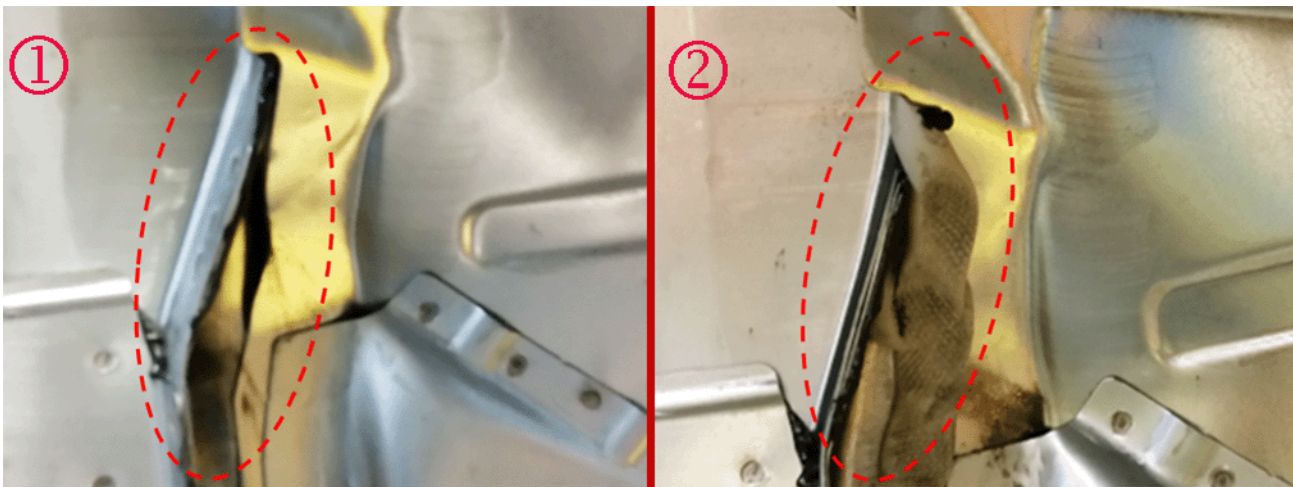


2. If the cause of the leak cannot be determined, remove enough of the rear portion of the front wheelhouse liner on the affected side(s) to access the outer lower hinge pillar. For LaCrosse, refer to the *Front Wheelhouse Front Liner Replacement* in SI. For Malibu, refer to the appropriate side *Front Wheelhouse Rear Liner Replacement* in SI.

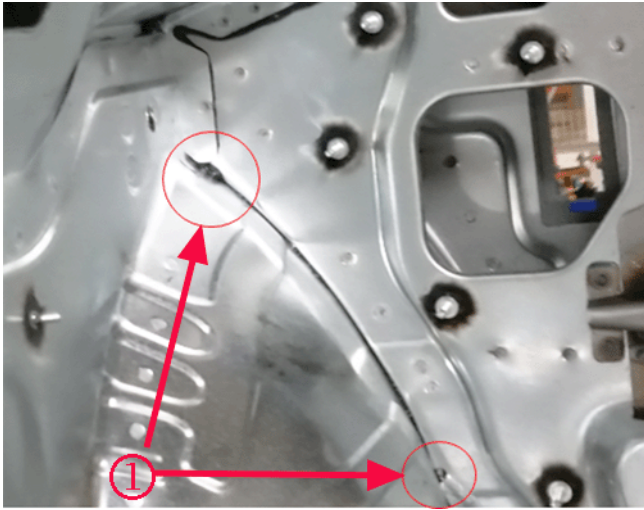


Note: The right side hinge pillar is shown in the graphic above. Left side location would be similar.

3. With the front wheelhouse liner removed, visually inspect the outer lower hinge pillar for voids in the body sealer in the areas illustrated above.

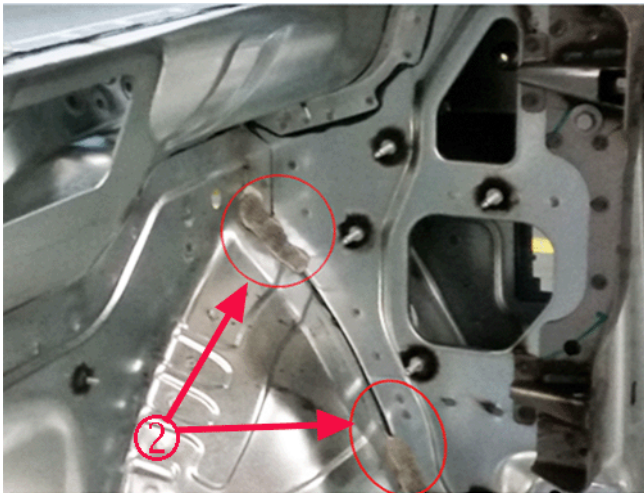


- If there are voids found in the body sealer (1), apply appropriate body seam sealer to the affected areas (2).
 - If the cause of the leak was not a void in the body seam sealer at the wheelhouse of the affected side(s), continue ahead to step #4.
4. Remove the body hinge pillar garnish molding on the affected side(s), and pull back the carpet enough to inspect the inner hinge pillar. Refer to *Body Hinge Pillar Garnish Molding Replacement* in SI.

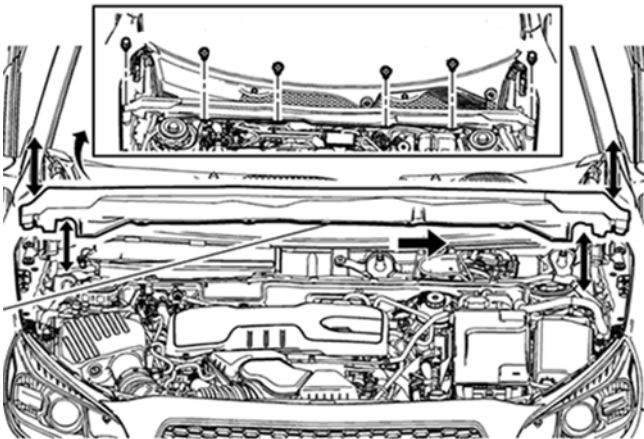


Note: The right side inner hinge pillar is shown in the graphic above. Left side location would be similar.

5. With the garnish removed and the carpet pulled back, visually inspect for voids (1) in the body sealer in the areas illustrated above.



6. If there are voids found in the body sealer, apply appropriate body seam sealer (2) to the affected areas.
7. After all voids are filled, perform a waterleak test to verify the condition is corrected. Refer to *Waterleak Test Preparation* in SI.
 - If waterleak repair is confirmed by vehicle passing the waterleak test, no further repairs are necessary. Reinstall any parts/trim removed for access to repair areas.
 - If the vehicle fails the waterleak test, follow the recommendations below.
 - If your vehicle is a 2014-2015 Malibu, built prior to VIN Breakpoint FF262445, continue ahead to step #8.
 - For all other vehicles return to SI and follow recommended diagnostics.



- Remove the air inlet grille panel. Refer to *Air Inlet Grille Panel Replacement* in SI.



- With the air inlet panel removed, visually inspect for voids in the body sealer on the affected side in areas illustrated above.
- If there are voids found in the body sealer, apply high tech clear seam sealer, Kent Industries P/N P10200*, to the affected areas.
- After all voids are filled, perform a waterleak test to verify the condition is corrected. Refer to *Waterleak Test Preparation* in SI.
- Reinstall the air inlet grille panel and any parts/trim removed for access to repair areas.

Parts Information

This product is currently available from Kent Industries (1-888-YES-KENT).

Description	Part Number	Qty
HIGH – TECH CLEAR-SEAM SEALER*	P10200	There is enough material to perform multiple vehicles. Store the remaining material for future use.

*We believe this source and their products to be reliable. There may be additional manufacturers of such products/materials. General Motors does not endorse, indicate any preference for, or assume any responsibility for the products or material from this firm or for any such items that may be available from other sources.

Warranty Information

For vehicles repaired under warranty, use:

Labor Operation	Description	Labor Time
2080518*	Apply Seam Sealer to Body Sealer Voids	1.1 hrs

*This is a unique Labor Operation for Bulletin use only.

Version	
Modified	

GM bulletins are intended for use by professional technicians, NOT a "do-it-yourselfer". They are written to inform these technicians of conditions that may occur on some vehicles, or to provide information that could assist in the proper service of a vehicle. Properly trained technicians have the equipment, tools, safety instructions, and know-how to do a job properly and safely. If a condition is described, DO NOT assume that the bulletin applies to your vehicle, or that your vehicle will have that condition. See your GM dealer for information on whether your vehicle may benefit from the information.



WE SUPPORT VOLUNTARY TECHNICIAN CERTIFICATION