



Service Bulletin

PRELIMINARY INFORMATION

Subject: Carpet Pulls Loose from Under Driver Side Body Hinge Pillar Trim Panel

Models: 2010-2016 Chevrolet Equinox
2010-2016 GMC Terrain

Attention: This PI also applies to any of the above models that may be Export vehicles.

This PI has been revised to add the 2016 Model Year. Please discard PI1358.

Condition/Concern



Some customers may comment that the driver side carpet pulls away from the lower left body hinge pillar trim panel (kick panel).

Recommendation/Instructions

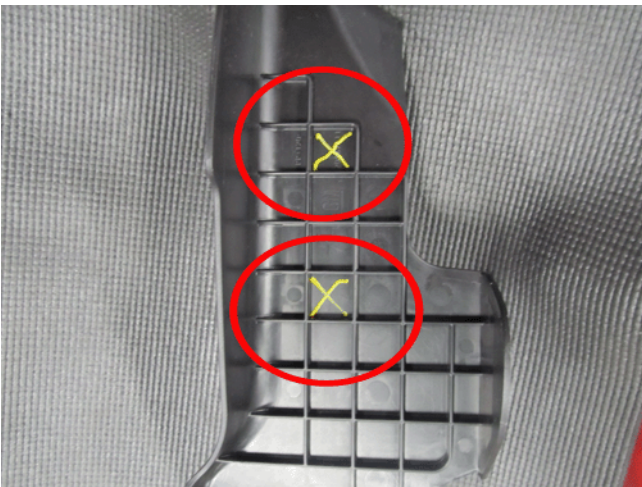
Technicians should remove the lower left body hinge pillar trim panel (kick panel) and install push pins to the area shown following the steps below:



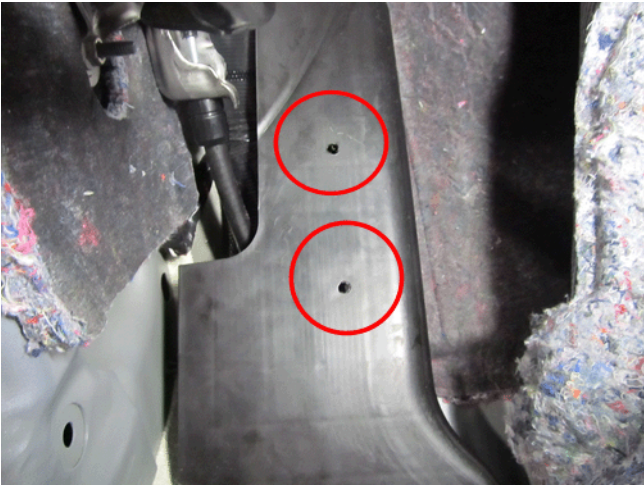
1. Remove the body hinge pillar trim panel.



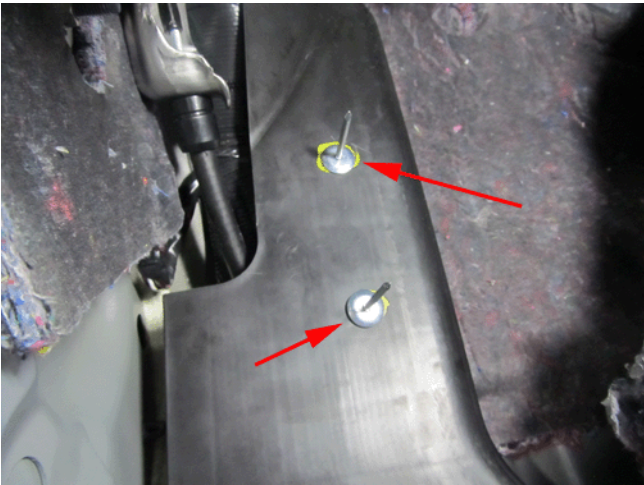
2. Pull back the carpet to expose the driver footrest.
3. Remove the two mounting nuts and remove the footrest.



4. With the footrest on a bench, turn over and mark the first and fourth "box" of the center row with a paint pen as shown.
5. Using a 1/4" (6.35 mm) drill bit, drill two holes in the center of the marks.



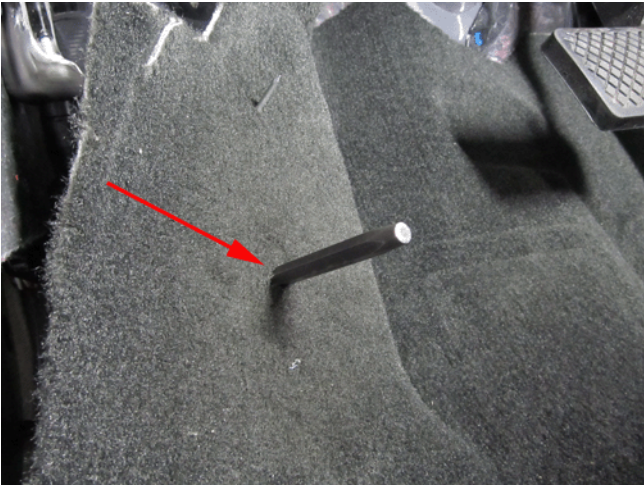
6. Install the footrest and the two mounting nuts.



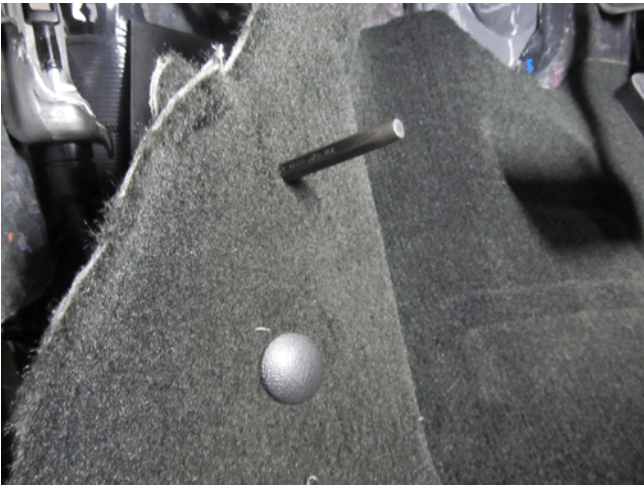
7. Place two rivets in the holes drilled and pull the carpet gently over the rivets.



8. Push the carpet over the rivets and punch through the carpet as shown.



9. Lift the carpet back up, remove the rivets and use a punch to open the holes of the carpet to allow push pins through.



10. Install the push pins through each hole.

Note: Trimming the jute around the push pins helps with installation.



11. Install the carpet to the driver footrest using the push pins.

12. Install the body hinge pillar trim panel.

Parts Information

Part Number	Description	Quantity
11569663	Rivet	2

22718305	Push Pin	2
----------	----------	---

Warranty Information

For vehicles repaired under warranty, use:

Labor Operation	Description	Labor Time
1080198*	Install Retainers to Retain Carpet	0.5 hr

*This is a unique Labor Operation for Bulletin use only. It will not be published in the Labor Time Guide.

GM bulletins are intended for use by professional technicians, NOT a "do-it-yourselfer". They are written to inform these technicians of conditions that may occur on some vehicles, or to provide information that could assist in the proper service of a vehicle. Properly trained technicians have the equipment, tools, safety instructions, and know-how to do a job properly and safely. If a condition is described, DO NOT assume that the bulletin applies to your vehicle, or that your vehicle will have that condition. See your GM dealer for information on whether your vehicle may benefit from the information.



WE SUPPORT VOLUNTARY TECHNICIAN CERTIFICATION