

DCC Fuse Installation During PDS

Service Category General

Section Pre-Delivery Service

Market USA

Lexus Supports
ASE Certification 

Applicability

YEAR(S)	MODEL(S)	ADDITIONAL INFORMATION
2017	LS460	

Introduction

To minimize battery discharge during transportation and storage, the DCC Fuses (30A) have been removed at the assembly plant and temporarily stored in the blank spaces of the fuse block cover in the engine compartment.

During Pre-Delivery Service (PDS), reinstall the DCC Fuses into their original locations.

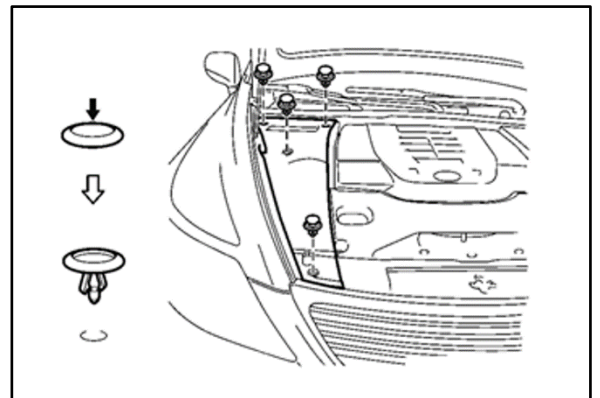
Warranty Information

OP CODE	DESCRIPTION	TIME	OFF	T1	T2
N/A	Not Applicable to Warranty	–	–	–	–

Installation Procedure

1. Push the core of the engine compartment side cover clips and remove them. Then remove the engine compartment side cover.

Figure 1.



DCC Fuse Installation During PDS

Installation Procedure (Continued)

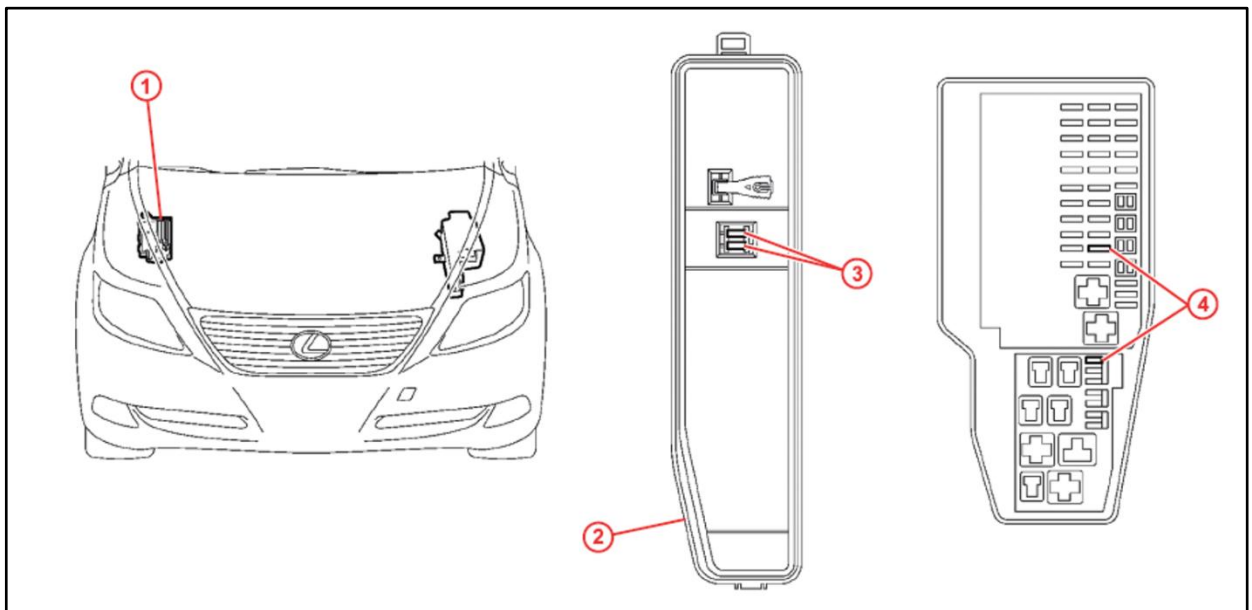
2. Make sure that the wheels are pointing straight ahead and the steering wheel is centered before installing the DCC Fuses.

NOTE

The procedure above is necessary to perform the VGRS initialization correctly.

3. With the ignition switch OFF, install the DCC Fuses into their original locations in the engine compartment fuse block.

Figure 2.



1	Fuse Block
2	Fuse Block Cover

3	DCC Fuses (Storage Location)
4	Install DCC Fuses Here

NOTE

- While the vehicle is stored at the dealership, disconnect the negative (-) battery terminal to prevent battery discharge. Refer to Service Bulletin No. [L-SB-0023-16](#), "Battery Maintenance During PDS," for battery maintenance information.
- If the DCC Fuses are installed with the ignition switch in the "IG-ON" position, Diagnostic Trouble Codes (DTCs) will be detected. In that case, clear the DTCs.
- If the ignition switch is cycled to the "IG-ON" position without the DCC Fuses installed, turn the ignition switch to the "IG-OFF" position and wait for more than 10 seconds before installing the Fuses.

DCC Fuse Installation During PDS

Installation Procedure (Continued)

4. Replace the engine compartment side cover. Installation is in the reverse order of removal.

When inserting the clips, refer to Figure 3.

Figure 3.

