

Front License Plate and Mounting Bracket Installation

Service
Category General

Section Pre-Delivery Service

Market USA

Lexus Supports
ASE Certification 

Applicability

YEAR(S)	MODEL(S)	ADDITIONAL INFORMATION
2017	NX200T, NX300H	

Introduction

The front license plate mounting bracket and 2 self-tapping screws for the 2017 model year NX 200t and NX 300h vehicles are stored in the rear cargo area of the vehicle.

Install the license plate and mounting bracket during Pre-Delivery Service (PDS).

Warranty Information

OP CODE	DESCRIPTION	TIME	OFP	T1	T2
N/A	Not Applicable to Warranty	—	—	—	—

Front License Plate and Mounting Bracket Installation

Installation Procedure

1. Install the mounting bracket.
 - A. Align holes "A" of the mounting bracket with the dimples on the radiator lower grille.

HINT

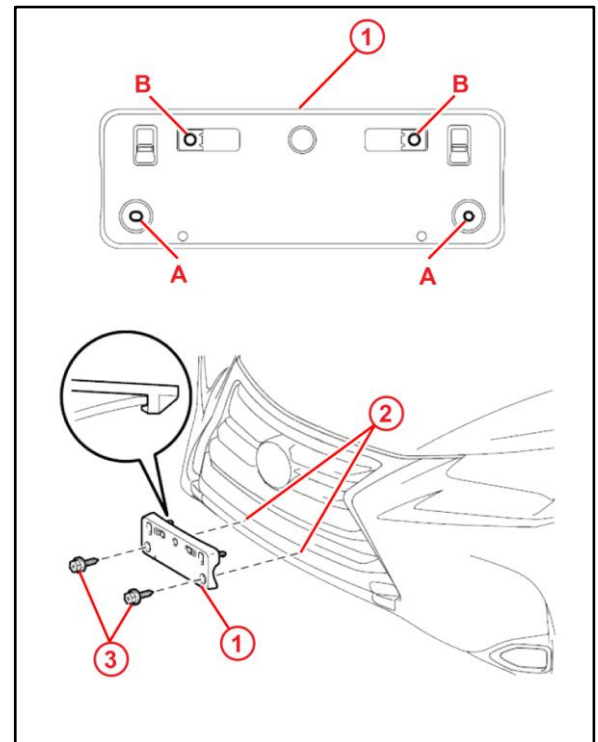
- Holes "A" are used to install the mounting bracket to the bumper cover.
- Holes "B" are used to install the front license plate to the mounting bracket.

- B. Engage the 2 clips and screw the 2 supplied self-tapping screws directly into the dimples to install the front license plate mounting bracket.

NOTE

- Do NOT pre-drill holes into the dimples on the front bumper cover.
- Do NOT over-tighten the self-tapping screws.

Figure 1.



1	Mounting Bracket
2	Dimples
3	Self-tapping Screws

Front License Plate and Mounting Bracket Installation

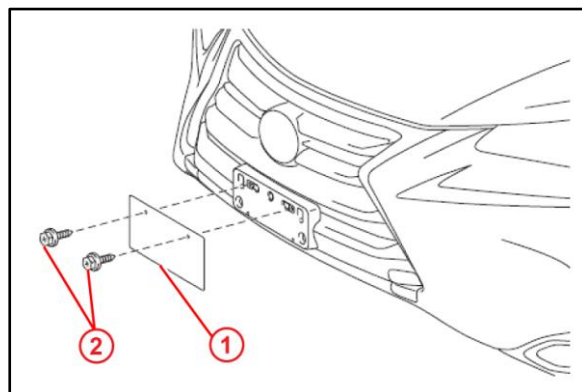
Installation Procedure (Continued)

2. Install the front license plate to the mounting bracket using 2 non-corroding bolts with the following dimensions:

Nominal Length: 15.0 mm (0.59 in.)

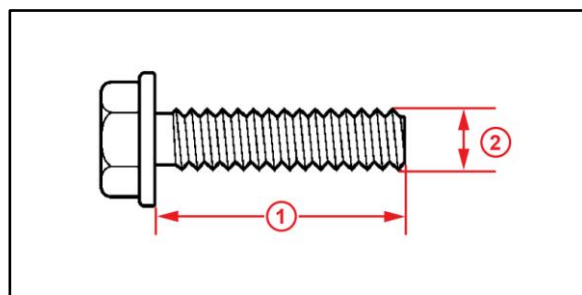
Diameter: 6.0 mm (0.24 in.)

Figure 2.



1	Front License Plate
2	Bolts

Figure 3.



1	Nominal Length
2	Diameter