

ATTENTION:
 GENERAL MANAGER
 PARTS MANAGER
 CLAIMS PERSONNEL
 SERVICE MANAGER

IMPORTANT - All Service Personnel Should Read and Initial in the boxes provided, right.

© 2016 Subaru of America, Inc. All rights reserved.



QUALITY DRIVEN® SERVICE

SERVICE BULLETIN

APPLICABILITY: 2015-2017MY Legacy and Outback
 2012-2016MY Impreza
 2013-2016MY XV Crosstrek
 2015-2016 WRX / WRX STI
 All Models Listed with Seat Lifter Feature

NUMBER: 12-206-16
DATE: 07/28/16

SUBJECT: Seat Cushion Frame Surface Rust Treatment Procedure

INTRODUCTION:

This bulletin provides a procedure to address a customer reported cosmetic condition of surface rust appearing on the inner seat cushion frame of the front seat assemblies.

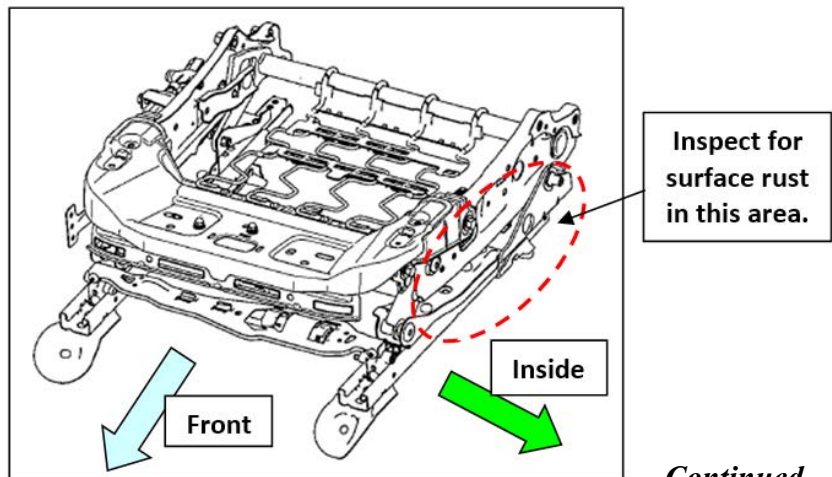
REQUIRED MATERIALS:

- Readily available black touch-up paint (or equivalent)
- An appropriately-sized paint brush (see photos in Service Procedure)
- Solvent or brake cleaner
- Masking Tape
- A clean shop cloth
- Abrasive pad (Scotch Brite™) or equivalent emery cloth / sandpaper

SERVICE PROCEDURE / INFORMATION:

VERY IMPORTANT:

Before proceeding with this repair, always follow all of the applicable precautions whenever working with the Airbag and / or Occupant Detection Systems.



Continued...

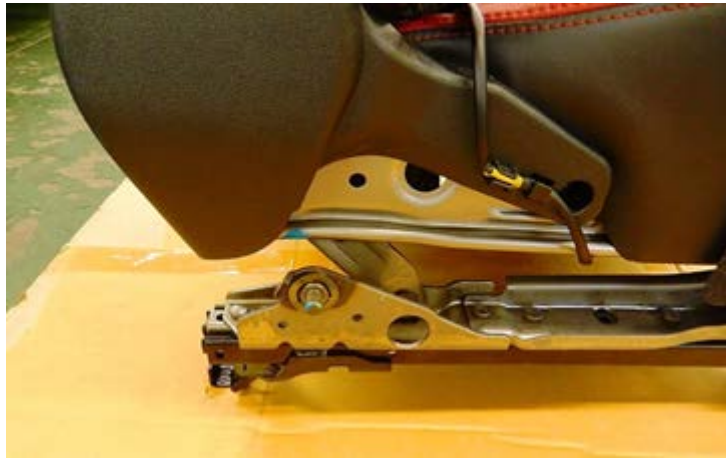
CAUTION: VEHICLE SERVICING PERFORMED BY UNTRAINED PERSONS COULD RESULT IN SERIOUS INJURY TO THOSE PERSONS OR TO OTHERS.

Subaru Service Bulletins are intended for use by professional technicians ONLY. They are written to inform those technicians of conditions that may occur in some vehicles, or to provide information that could assist in the proper servicing of the vehicle. Properly trained technicians have the equipment, tools, safety instructions, and know-how to do the job correctly and safely. If a condition is described, DO NOT assume that this Service Bulletin applies to your vehicle, or that your vehicle will have that condition.

SUBARU OF AMERICA, INC. IS ISO 14001 COMPLIANT

ISO 14001 is the international standard for excellence in Environmental Management Systems. Please recycle or dispose of automotive products in a manner that is friendly to our environment and in accordance with all local, state and federal laws and regulations.

- After confirming the customer concern, using the seat lifter (manual or power), raise the seat cushion to its highest position.
- Remove the affected front seat assembly(s) following the procedure in the applicable Service Manual.
- Remove the retaining nut, seat belt buckle assembly and wave washer from the seat frame.



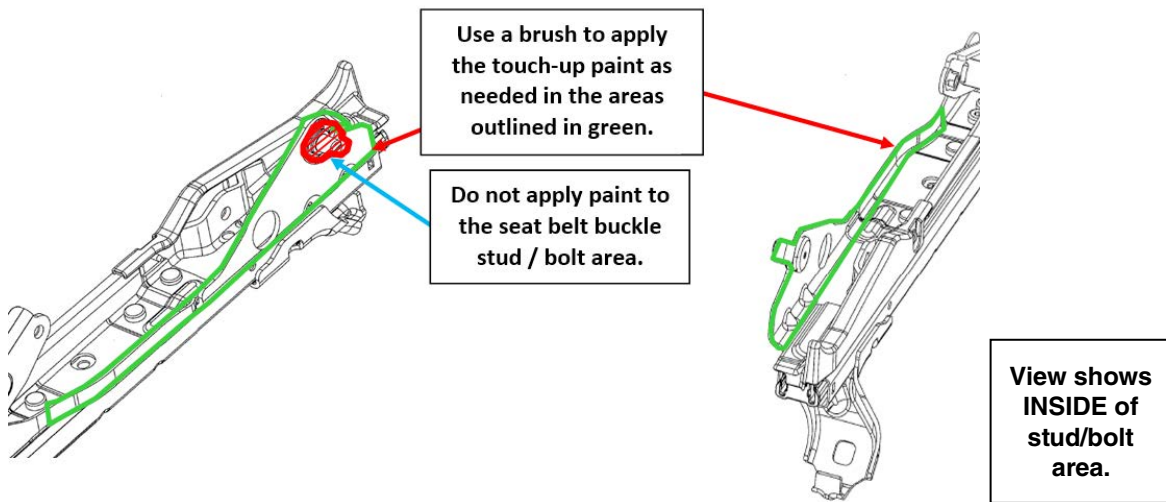
- Remove the rust from the areas indicated in the illustration above using Scotch Brite, emery cloth and/or sandpaper as necessary.



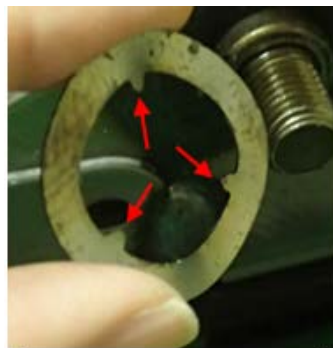
- Once any rust has been removed, wipe the area with solvent or brake cleaner applied to a clean shop cloth.
- Mask off the seat belt buckle stud / bolt.



Continued...



NOTE: If the wave washer used for the seat belt buckle is found to be the old “tang” type, replace it with the new style washer **p.n. 64168SG000** as shown in the photos below.



OLD Wave Washer



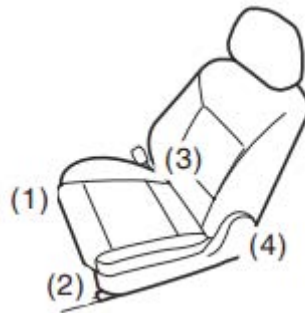
NEW Wave Washer

Continued...

- Use a finger to collect a small amount of excess grease found at the rear of the seat slide rail.
- Apply the grease to both sides of the wave washer and the shoulder portion of the seat belt buckle mounting bolt (stud). **DO NOT** apply grease to the mounting bolt threads.
- Install the wave washer onto the groove in the shoulder of the mounting bolt as shown in the photo below. The felt portion should be at about the 6:00 position (pointing down).



- Reinstall the seat belt buckle assembly onto the shouldered portion against the wave washer and hold it in place while tightening the retaining nut.
- **IMPORTANT:** Torque the retaining nut to 38 Nm (28 ft. lbs.) and confirm the seat belt buckle assembly moves freely.
- Reinstall the seat assembly(s) in reverse order of removal.
- **IMPORTANT:** Torque the four (4) retaining bolts for each seat assembly to 53 Nm (39 ft. lbs.) using the sequence shown in the illustration below.



- Confirm proper operation of the Airbag and Occupant Detection System warning lamps to complete the repair.

WARRANTY / CLAIM INFORMATION:

For vehicles within the Basic New Car Limited Warranty period, this repair may be submitted using the following claim information:

Labor Description	Labor Operation #	Labor Time	Fail Code
SEAT CUSHION FRAME RUST TREATMENT- ONE SIDE	A913-913	0.6	YDV-50
SEAT CUSHION FRAME RUST TREATMENT- BOTH SIDES	A913-914	1.1	

NOTE: Up to \$5.00 can be claimed in Sublet to cover the cost of the paint and materials.

Continued...

IMPORTANT REMINDERS:

- SOA strongly discourages the printing and/or local storage of service information as previously released information and electronic publications may be updated at any time.
- Always check for any open recalls or campaigns anytime a vehicle is in for servicing.
- Always refer to STIS for the latest service information before performing any repairs.