

**ATTENTION:**  
 GENERAL MANAGER   
 PARTS MANAGER   
 CLAIMS PERSONNEL   
 SERVICE MANAGER

IMPORTANT - All Service Personnel Should Read and Initial in the boxes provided, right.


© 2016 Subaru of America, Inc. All rights reserved.



QUALITY DRIVEN® SERVICE

## SERVICE BULLETIN

**APPLICABILITY:** 2015MY Outback Models

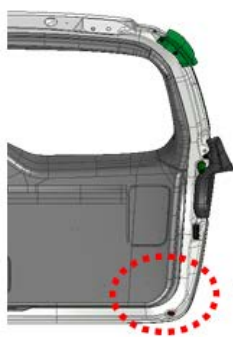
**NUMBER:** 12-202-16

**SUBJECT:** Rear Gate and Rear Gate Buffer Information

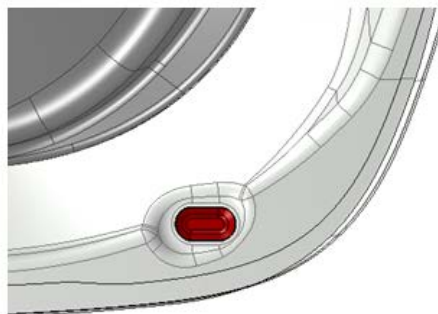
**DATE:** 07/13/16

**INTRODUCTION:**

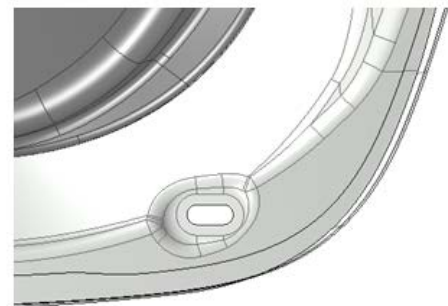
This bulletin describes a design change to the rear gate panel eliminating the plugs previously installed in the lower outer corner water drain holes. As a result of this change, there has been a change made to the rear gate buffers as described in the Service Procedure section below.



**Water Drain Plug**



**Drain Plug Installed**



**Drain Plug Removed**

**PRODUCTION CHANGE INFORMATION:**

The new rear gate buffers were incorporated into production starting with VIN F\*207916.

**PART INFORMATION:**

Description	Part Number	Applicability
BUFFER R G SIDE RH	63112AL030	Up to VIN <b>F*207916</b>
BUFFER R G SIDE LH	63112AL040	
BUFFER R G SIDE RH	63112AL000	VIN <b>F*207916</b> and after
BUFFER R G SIDE LH	63112AL010	
SCREW	904315025	ALL



**Gate Buffer**

**SERVICE PROCEDURE / INFORMATION:**

When replacing the rear gate buffers (e.g. rear gate panel replacement):

- On Vehicles **BEFORE VIN F\*207916**: the buffers and the retaining screw are **One-Time Use** items and must be replaced with the part numbers shown in the table above.

*Continued...*

- On VIN F\*207916 and later: the original buffers and retaining screw can be reused **BUT**, the rubber “packing” shown in yellow on the illustration below must be removed before installation.
- Torque the retaining screw to 5.5 ft. lbs. (66 inch-pounds).



**WARRANTY / CLAIM INFORMATION:**

For vehicles within the Basic New Car Limited Warranty period or covered by an active Subaru Added Security Gold plan, this repair may be submitted using the following claim information:

Labor Description	Labor Operation #	Labor Time	Fail Code
BOTH REAR GATE BUFFERS R&R	A915-374	0.3	SGZ29

**IMPORTANT REMINDERS:**

- SOA strongly discourages the printing and/or local storage of service information as previously released information and electronic publications may be updated at any time.
- Always check for any open recalls or campaigns anytime a vehicle is in for servicing.
- Always refer to STIS for the latest service information before performing any repairs.

**CAUTION: VEHICLE SERVICING PERFORMED BY UNTRAINED PERSONS COULD RESULT IN SERIOUS INJURY TO THOSE PERSONS OR TO OTHERS.**

Subaru Service Bulletins are intended for use by professional technicians ONLY. They are written to inform those technicians of conditions that may occur in some vehicles, or to provide information that could assist in the proper servicing of the vehicle. Properly trained technicians have the equipment, tools, safety instructions, and know-how to do the job correctly and safely. If a condition is described, DO NOT assume that this Service Bulletin applies to your vehicle, or that your vehicle will have that condition.

**SUBARU OF AMERICA, INC. IS ISO 14001 COMPLIANT**

ISO 14001 is the international standard for excellence in Environmental Management Systems. Please recycle or dispose of automotive products in a manner that is friendly to our environment and in accordance with all local, state and federal laws and regulations.