



GROUP <b>Engine</b>	MODEL <b>2016MY Multiple Models (see table on Page 17)</b>
NUMBER <b>161</b>	DATE <b>November 2016</b>

## TECHNICAL SERVICE BULLETIN

**SUBJECT:** DATA COLLECTION: EXTRACT CALIFORNIA EMISSIONS DATA FROM ECU (DC16)

This bulletin provides information related to extracting “in use performance tracking” emissions data from the Engine Control Unit (ECU) of certain vehicles sold in California. The California Air Resources Board (CARB) requires the emissions data from vehicles with a minimum of 3,000 accumulated miles without reprogramming or resetting. To facilitate collection of this data at the dealer level, GDS/KDS screenshots will allow the capture of relevant parameters.

### **\* NOTICE**

If the vehicle meets the criteria below, California dealers must perform this data collection on vehicles whenever an affected vehicle is in the shop for any maintenance or repair.

This data collection does not apply to vehicles or dealers operating outside of California.

As sufficient data is collected, individual line items per model may be closed without updates to the TSB. Once a line item is closed on DCS, no further data collection is required. Data collections initiated after a line item is closed are subject to chargeback.

For vehicles listed on DCS as requiring this procedure, follow the instructions in this bulletin after confirming that the following criteria are met:

- WebDCS shows this as an open Data Collection code DC16XXXX (depending on model; see table on page 18) for the vehicle.
- Vehicle has more than 3,000 accumulated miles on its odometer.
- Vehicle repair history does not show battery replacement/disconnection/reset or an ECU update done in the last 3,000 miles, because IUMPR (In Use Monitor Performance Ratio) data would have been cleared by such an event.
- Vehicle does not have the check engine light on.

**File Under: Engine**

**Circulate To:**     **General Manager**             **Service Manager**             **Parts Manager**

**Service Advisors**             **Technicians**             **Body Shop Manager**             **Fleet Repair**

**SUBJECT: DATA COLLECTION: EXTRACT CALIFORNIA EMISSIONS DATA FROM ECU (DC16)**

**\* NOTICE**

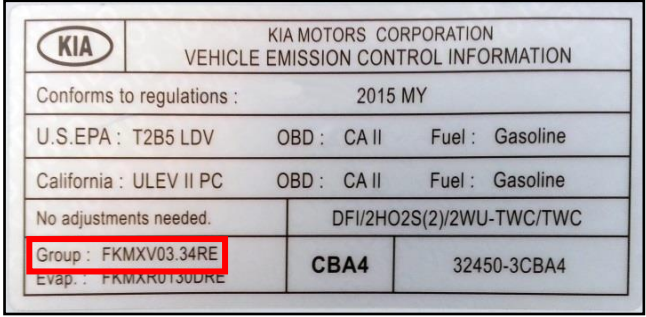
If a vehicle meets the above criteria, collect data prior to any other campaign or repair-related activities.

**GDS Service Procedure:**

(For KDS procedure, proceed to Page 7)

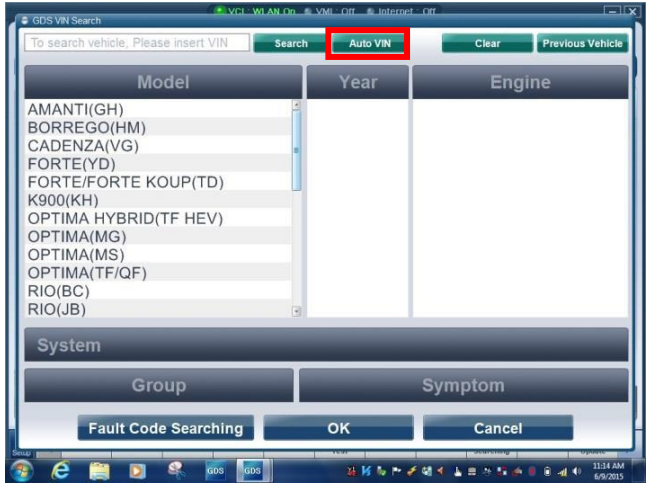
1. Open the engine compartment and locate the Vehicle Emission Control Information label.

Write down the “**Group**” number for later entry into the form.



2. With the ignition key on, insert the VCI into the DLC and turn on the GDS.

Access the GDS vehicle identification number (VIN) screen and configure the vehicle clicking **Auto VIN**.



**\* NOTICE**

- GDS must be updated to version N-K-01-16-0000, or later, to properly collect data.
- GDS must be connected to the internet to submit data.

**SUBJECT:**

**DATA COLLECTION: EXTRACT CALIFORNIA EMISSIONS DATA FROM ECU (DC16)**

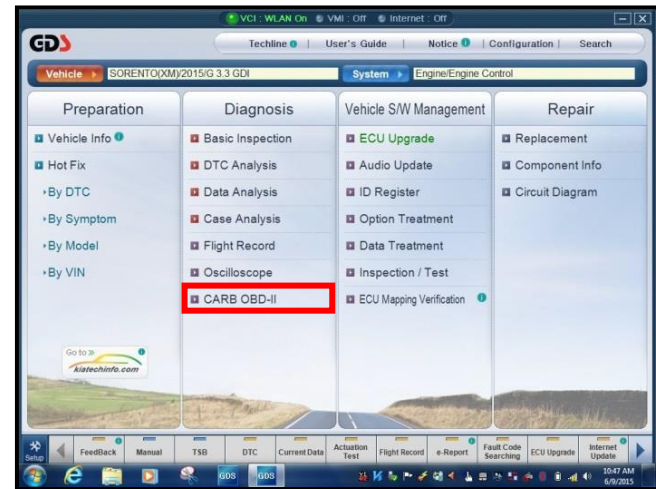
- Click **ENGINE**, and then click **OK**.

**\* NOTICE**

Screens shown in this bulletin are for demonstration **ONLY** purposes and will vary depending on the vehicle.



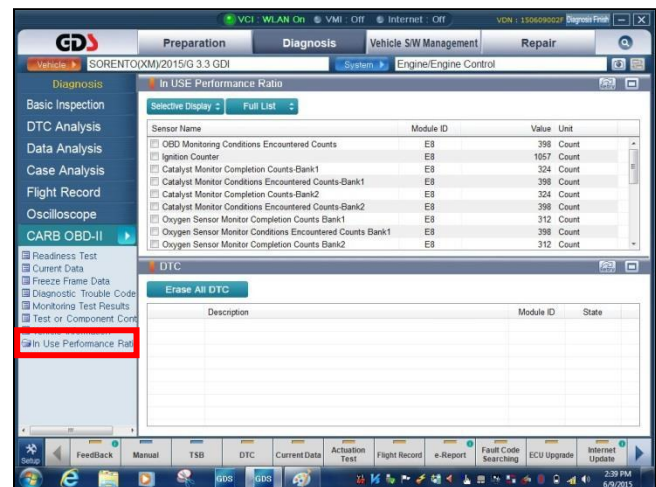
- Click **CARB OBD-II** under the Diagnosis tab.



- Click **In Use Performance Ratio** at the bottom left of the screen.

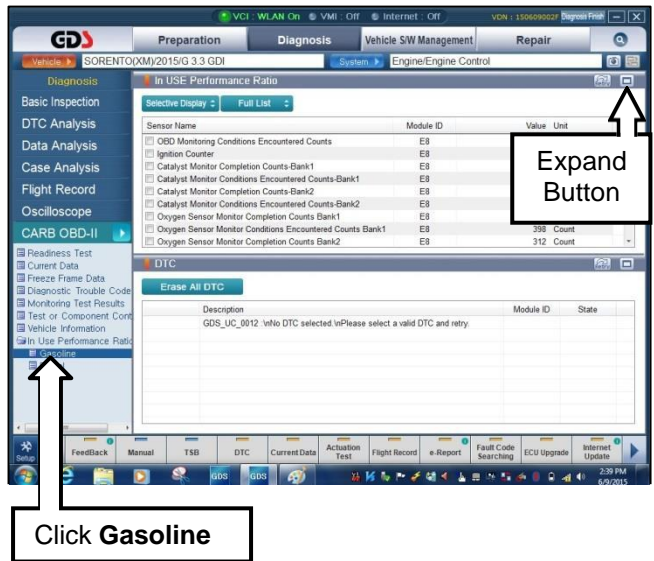
**\* NOTICE**

If all values indicate "Not Supported" or "0," check to make sure you have GDS software version N-K-01-16-0000 or later. If the software version is correct, and all values show "Not Supported" or "0," the vehicle will not qualify for this data collection, as it may have received a recent ECM update or battery replacement/reset of the data values.



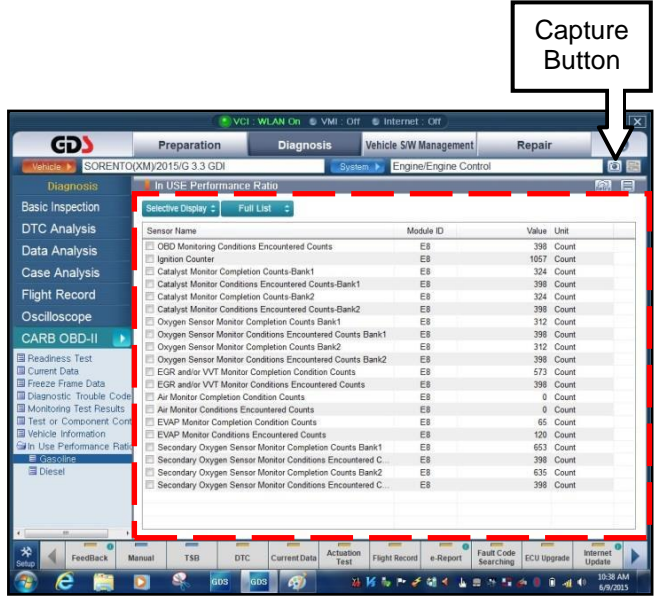
**SUBJECT: DATA COLLECTION: EXTRACT CALIFORNIA EMISSIONS DATA FROM ECU (DC16)**

6. Click **Gasoline**, and then click the **Expand** button at the top right corner of the **In USE Performance Ratio** window.



7. Click **Gasoline**, and then click the **Capture** button.

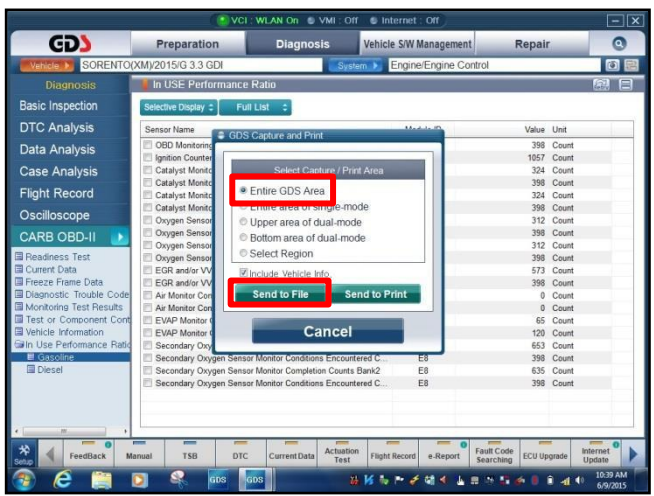
**\* NOTICE**  
 Make sure to capture the entire screen. If only part of the screen is displayed, first click the "Expand" button as described in step 6.



8. Click **Entire GDS Area**, and then click **Send to File**. The GDS will set up a destination folder and file name to save the captured screenshot.

Change the file name to include the model/engine, the last 6 digits of the VIN and the date (mmddyyyy), as shown below.

**Example:** XM33L\_576681\_06092015  
 (Model & Eng.) (VIN) (mmddyyyy)



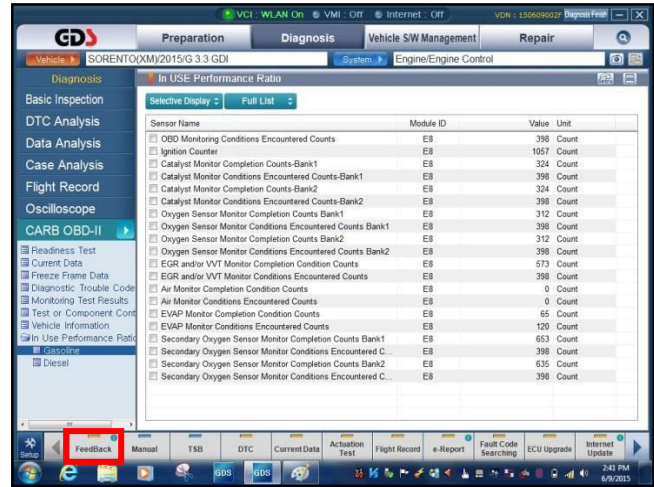


**SUBJECT:**

**DATA COLLECTION: EXTRACT CALIFORNIA EMISSIONS DATA FROM ECU (DC16)**

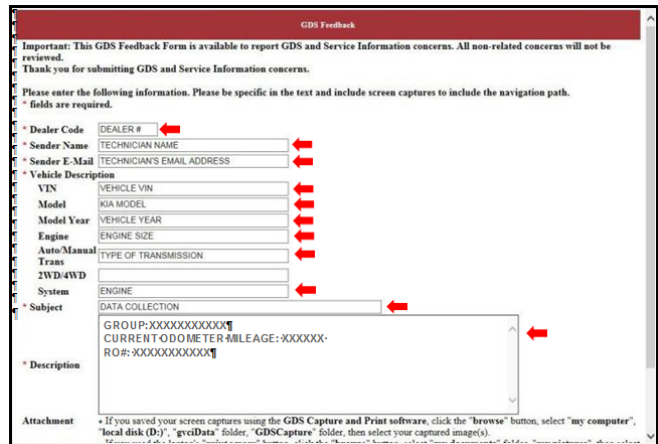
9. After saving the file, click the **FeedBack** button.

**\* NOTICE**  
**GDS must be connected to the internet to submit data.**



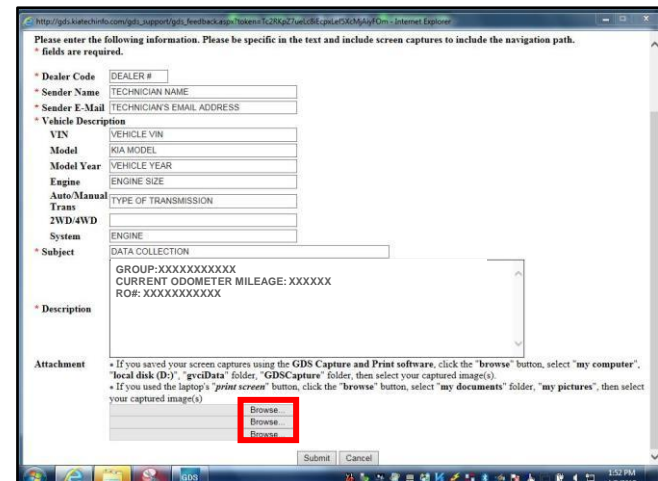
10. Enter all the information requested in the form, including your name and email address, and the following information:

- For System, enter **Engine**
- For Subject, enter **Data Collection**
- In the Description area,
  - Type **Group:** followed by the group number from the Vehicle Emission Control Information Label collected in step 1.
  - Add current odometer mileage.
  - Add RO#.



11. To attach the data to the feedback form, click the **Browse** button.

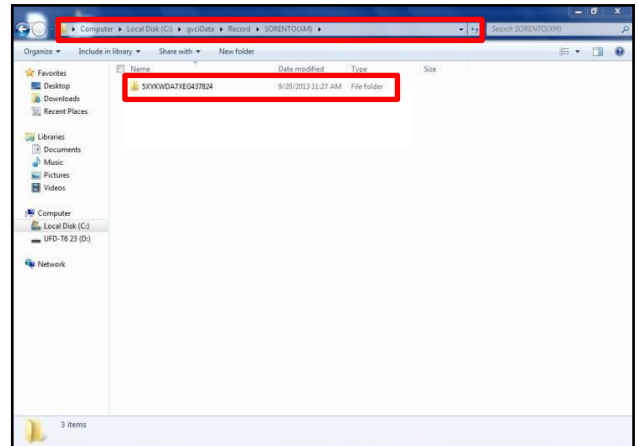
**\* NOTICE**  
**Ensure that you attach the correct files. Incorrect attachments render data submissions useless and are subject to a chargeback of the warranty claim.**



**SUBJECT: DATA COLLECTION: EXTRACT CALIFORNIA EMISSIONS DATA FROM ECU (DC16)**

12. Use the path shown below to navigate to the destination folder and file created in step 8.

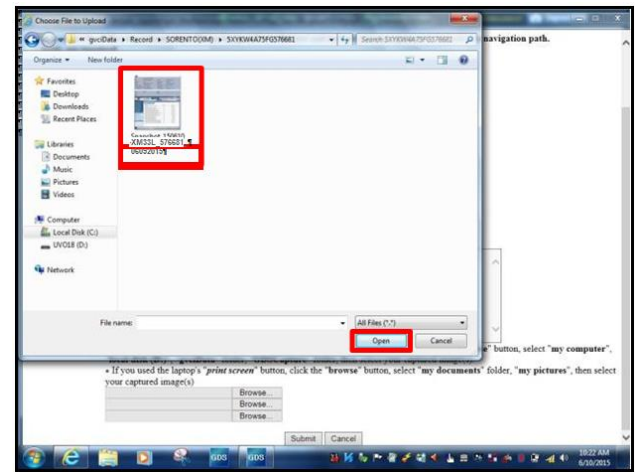
- Navigate to: **Local Disk (C:) > gvcData > Record**
- Click on the folder for the vehicle i.e., "**Sorento (XM).**"
- Click the folder containing the vehicle VIN, as shown.



13. Click the correct file, and then click the **Open** button to attach it to the feedback form.

**\* NOTICE**

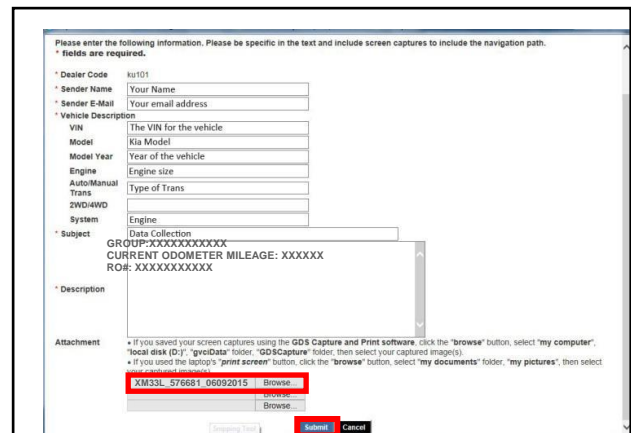
Ensure that you attach the correct files. Incorrect attachments render data submissions useless and are subject to a chargeback of the warranty claim.



14. When the file name appears in the attachment field, and all the information has been entered, click the **Submit** button.

**\* NOTICE**

GDS must be connected to the internet to submit data.



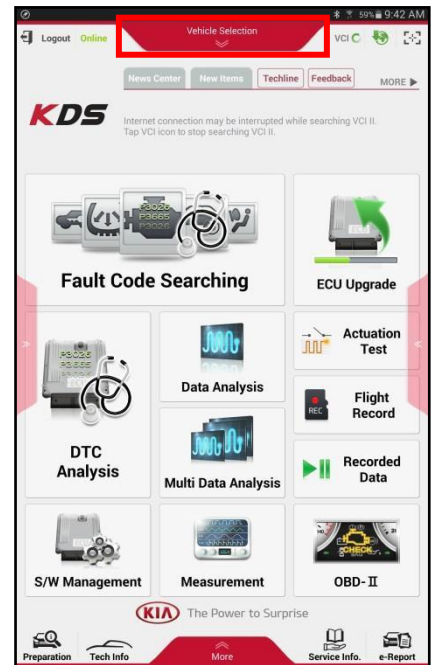
**SUBJECT:****DATA COLLECTION: EXTRACT CALIFORNIA  
EMISSIONS DATA FROM ECU (DC16)****KDS Service Procedure:**

- Open the engine compartment and locate the Vehicle Emission Control Information label.  
Write down the “**Group**” number for later entry into the form.
- With the ignition key on, insert the VCI II into the DLC and swipe down on the **Vehicle Selection** area to identify the vehicle.

		KIA MOTORS CORPORATION VEHICLE EMISSION CONTROL INFORMATION	
Conforms to regulations :		2015 MY	
U.S.EPA : T2B5 LDV	OBD : CA II	Fuel : Gasoline	
California : ULEV II PC	OBD : CA II	Fuel : Gasoline	
No adjustments needed.		DFI/2HO2S(2)/2WU-TWC/TWC	
Group : <b>FKMXV03.34RE</b>	<b>CBA4</b>	32450-3CBA4	
Evap. : FKMXR0130DRE			

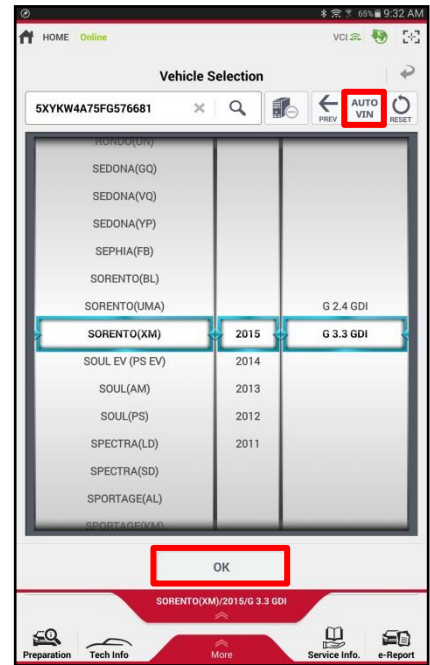
**\* NOTICE**

Screens shown in this bulletin are for demonstration **ONLY** purposes and will vary depending on the vehicle.

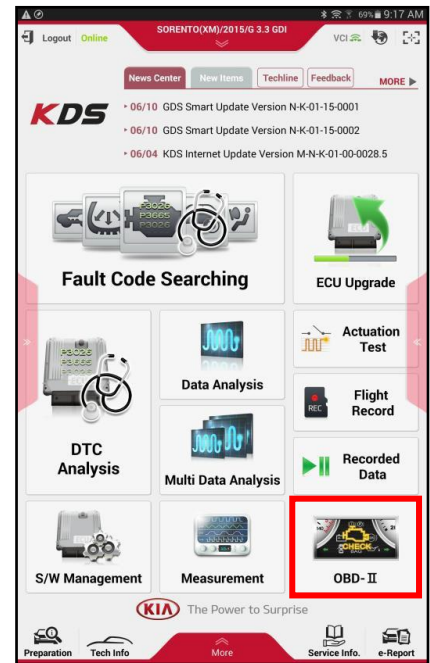


**SUBJECT: DATA COLLECTION: EXTRACT CALIFORNIA EMISSIONS DATA FROM ECU (DC16)**

3. Click **AUTO VIN**, and then click **OK**.



4. Once back on the KDS Home Screen, click **OBD-II**.

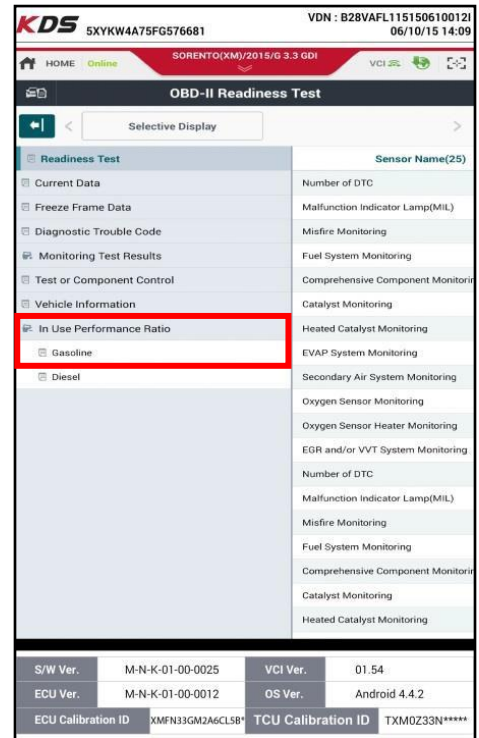




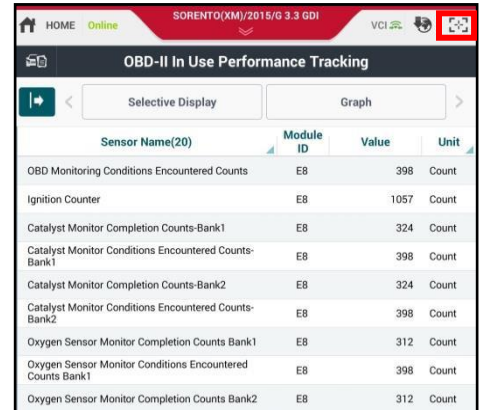
**SUBJECT:**

**DATA COLLECTION: EXTRACT CALIFORNIA EMISSIONS DATA FROM ECU (DC16)**

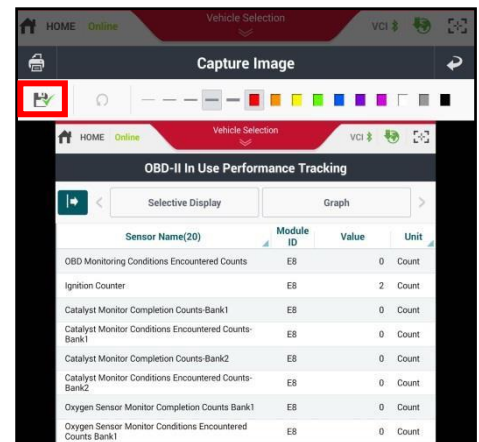
- Click In **USE Performance Ratio** > **Gasoline**.



- Click the **Screen Capture** button to save a screenshot of the data.



- Click the **Save** button to save the screenshot.



**SUBJECT: DATA COLLECTION: EXTRACT CALIFORNIA EMISSIONS DATA FROM ECU (DC16)**

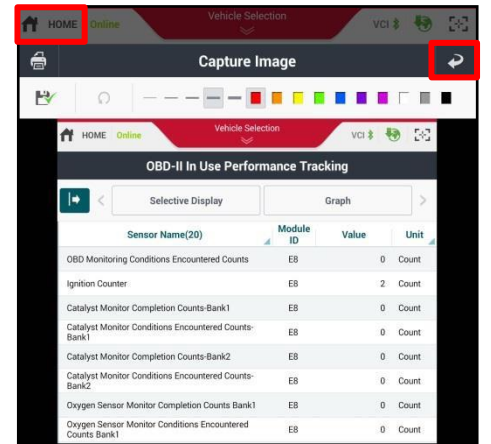
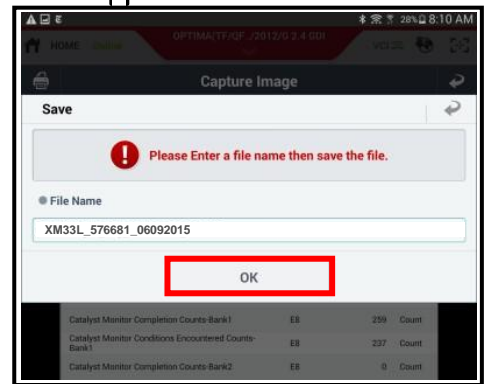
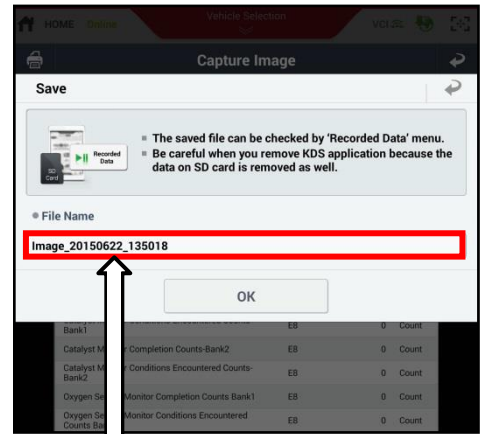
8. The KDS will set up a destination folder and file name to save the screenshot.

Change the file name to include the model/engine, the last 6 digits of the VIN and the date (mmddyyyy), as shown below.

**Example:** XM33L\_576681\_06092015  
 (Model & Eng.) (VIN) (mmddyyyy)

9. Click **OK** to save the image.

10. Click the **Return Arrow** on the screen, and then click the **HOME** button to return to the KDS Home Screen.



**\* NOTICE**

Steps 11~17 will need to be performed only once to properly set up KDS for this Data Collection procedure.

If Chrome is already the default KDS browser, proceed to step 12.

If access to the External Storage has already been added to the file manager, proceed to step 18.

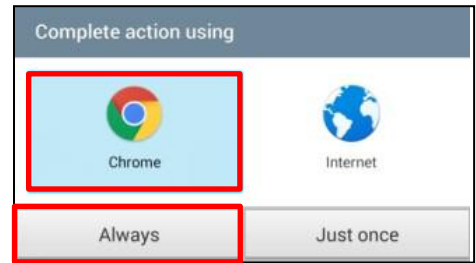
**SUBJECT:**

**DATA COLLECTION: EXTRACT CALIFORNIA EMISSIONS DATA FROM ECU (DC16)**

11. First, set Chrome as the default browser.

If this step has been previously done, proceed to step 12.

If not, refer to the following Article in KGIS: “KDS-Configuring Browser for Techline and Feedback Cases” for more information.

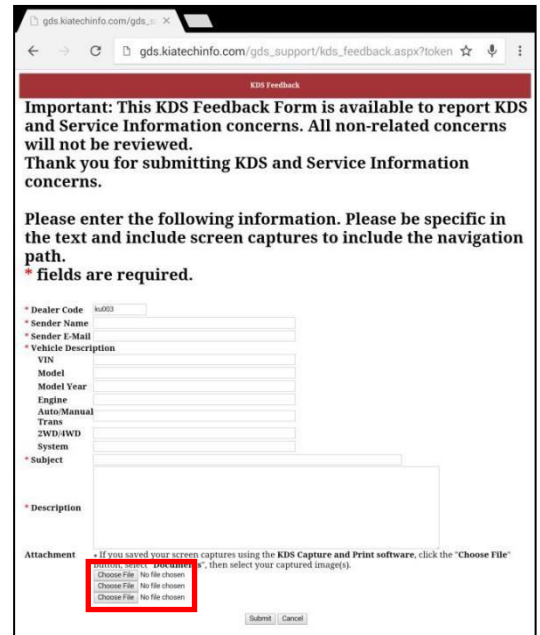


12. Once Chrome is set as the default browser, navigate to the KDS Home Screen and click **Feedback**.

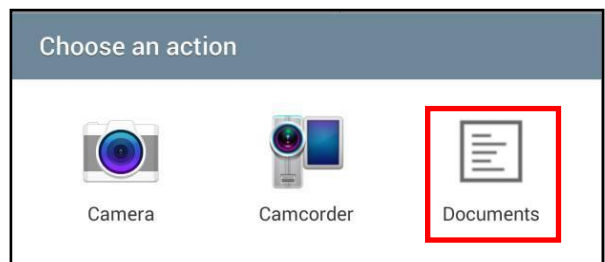
**NOTE: Steps 12~17 will add access to Internal and External Storage to the file manager.**



13. Click one of the **Choose File** buttons at the bottom of the screen.

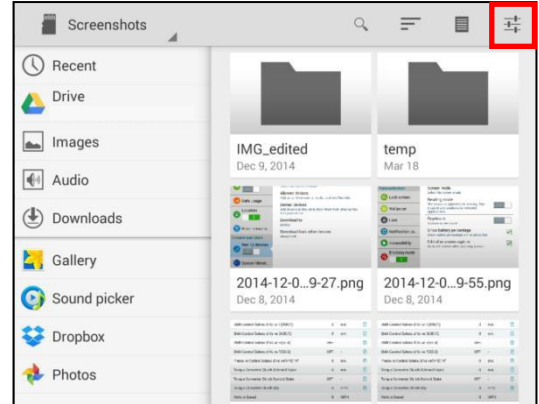


14. Click **Documents**.

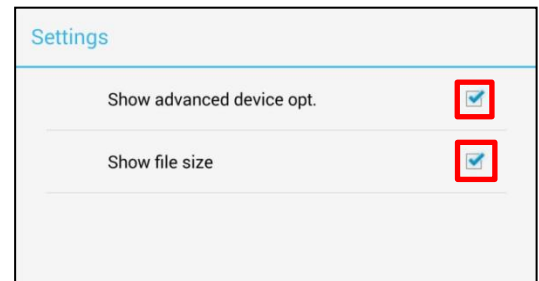


**SUBJECT: DATA COLLECTION: EXTRACT CALIFORNIA EMISSIONS DATA FROM ECU (DC16)**

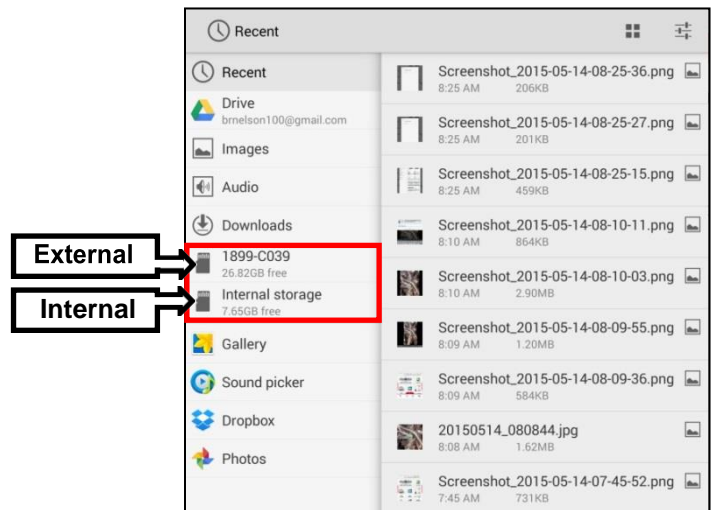
15. Click the **Settings** button in the upper right hand corner.



16. Click the check box for **Show advanced device opt.** and **Show file size** as shown.



17. Access to Internal and External Memory (i.e., SD card) is now available on the left hand side of the file manager.





**SUBJECT:**

**DATA COLLECTION: EXTRACT CALIFORNIA EMISSIONS DATA FROM ECU (DC16)**

18. Return to the KDS Home Screen and click **Feedback** (Pg. 10, step 12).

Enter all the information requested in the form, including your name and email address, and the following information.

- For System, enter **Engine**
- For Subject, enter **Data Collection**
- In the Description area,
  - Type **Group**: followed by the group number from the Vehicle Emission Control Information Label collected in Pg. 7, step 1.
  - Add current odometer mileage.
  - Add RO#.

**\* NOTICE**

**Make sure the email address is entered correctly or the Feedback form will fail to submit.**

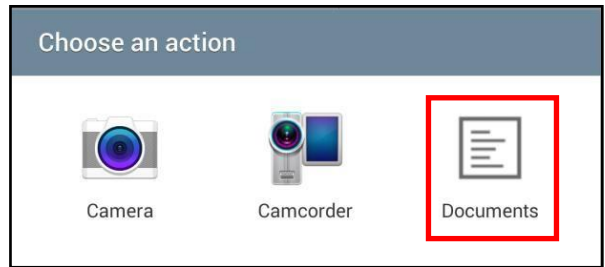
19. To attach the screenshot to the report, click **Choose File**.

The screenshot shows the 'KDS Feedback' form with the following fields and their values: Dealer Code (JWRO), Sender Name (TECHNICIAN NAME), Sender E-Mail (TECHNICIAN'S EMAIL ADDRESS), VIN (THE VEHICLE VIN), Model (JIA MODEL), Model Year (VEHICLE YEAR), Engine (ENGINE SIZE), Auto/Manual (TYPE OF TRANSMISSION), Trans ( ), System (ENGINE), and Subject (DATA COLLECTION). The Description field contains: GROUP:XXXXXXXXXX, CURRENT ODOMETER MILEAGE: XXXXXX, RO#: XXXXXXXXXXXX. The Attachment section has three 'Choose File' buttons, all showing 'No file chosen'. Red arrows point to the Dealer Code, Sender Name, Sender E-Mail, VIN, Model, Model Year, Engine, Auto/Manual, Trans, System, Subject, and the Description text area.

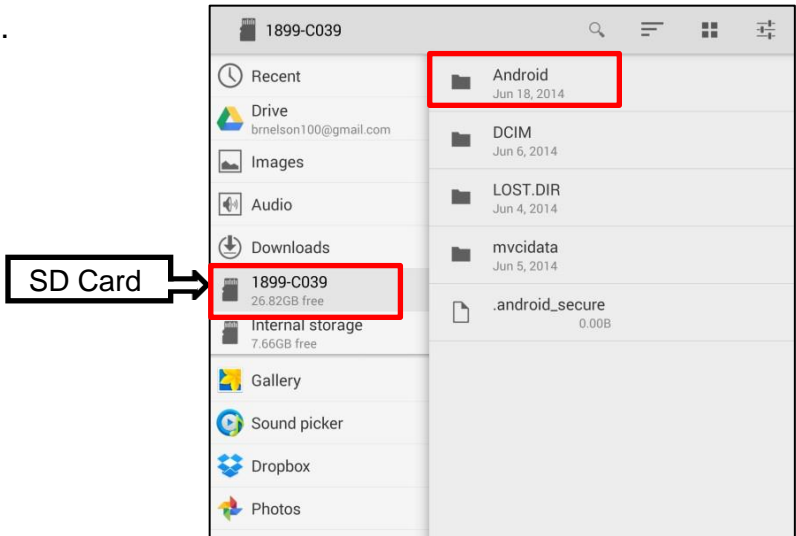
This screenshot is identical to the one above, but with a red rectangular box highlighting the three 'Choose File' buttons in the Attachment section, each labeled 'No file chosen'.

**SUBJECT: DATA COLLECTION: EXTRACT CALIFORNIA EMISSIONS DATA FROM ECU (DC16)**

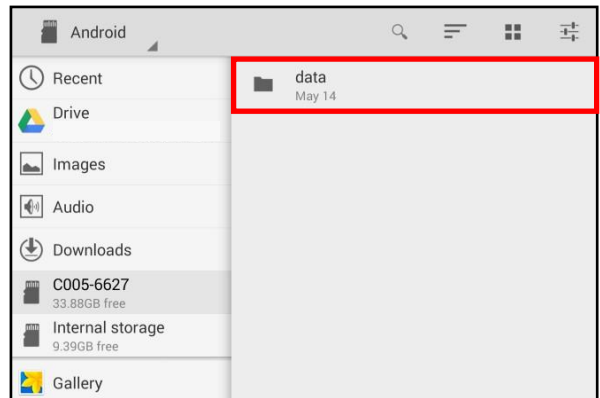
20. Click **Documents**.



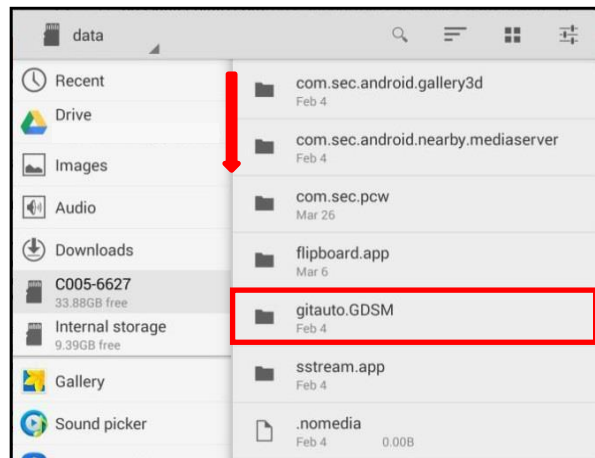
21. Click **External Storage > Android**.



22. Click **data**.

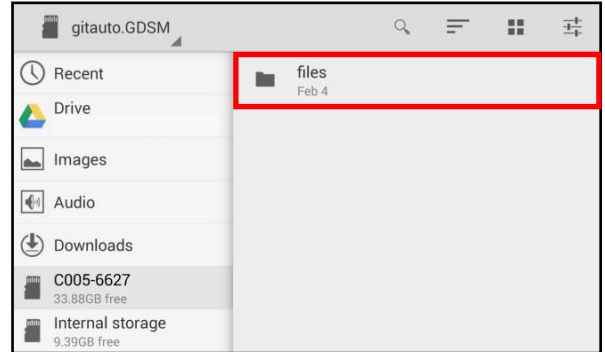


23. Scroll down, and then click **gitauto.GDSM**.

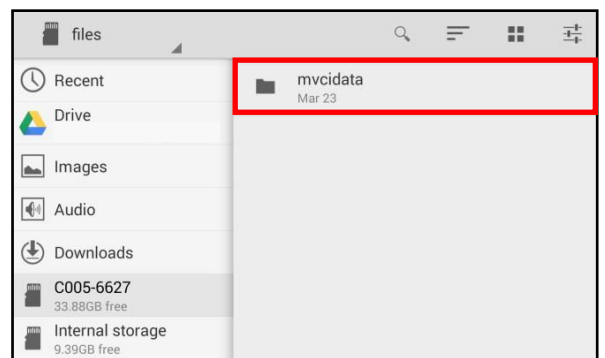


**SUBJECT:****DATA COLLECTION: EXTRACT CALIFORNIA  
EMISSIONS DATA FROM ECU (DC16)**

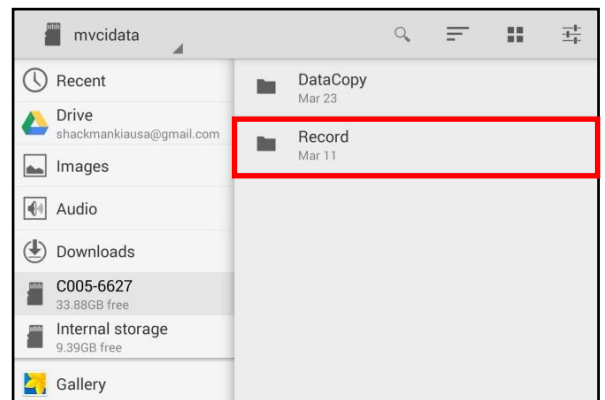
24. Click **files**.



25. Click **mvcidata**.

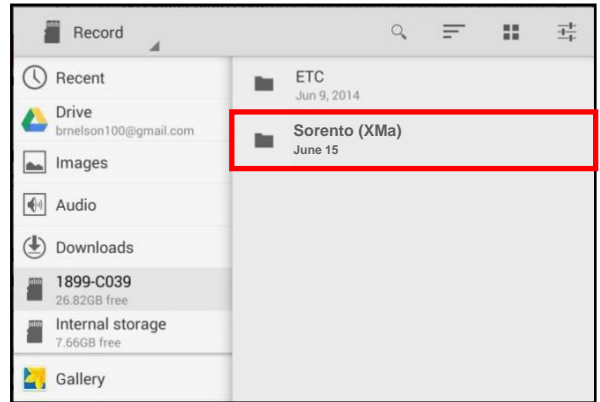


26. Click **Record**.

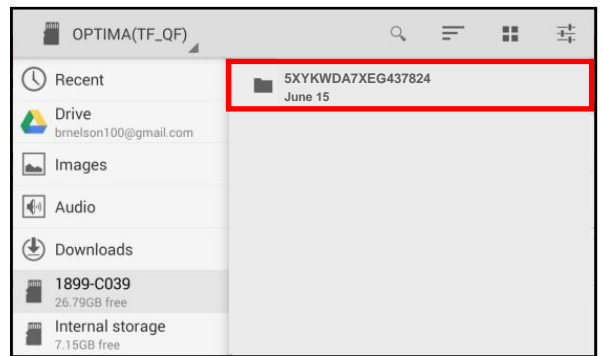


**SUBJECT: DATA COLLECTION: EXTRACT CALIFORNIA EMISSIONS DATA FROM ECU (DC16)**

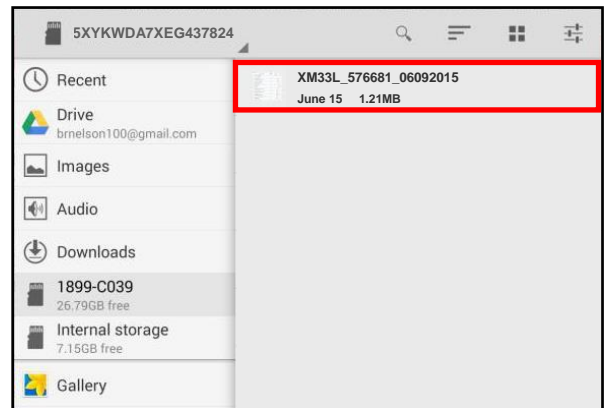
27. Click the vehicle model.



28. Click the VIN.



29. Click the Screenshot.





**SUBJECT:**

**DATA COLLECTION: EXTRACT CALIFORNIA EMISSIONS DATA FROM ECU (DC16)**

30. Click **Submit**.

**\* NOTICE**

Ensure that you attach the correct files. Incorrect attachments render data submissions useless and are subject to chargeback of the warranty claim.

AFFECTED PRODUCT RANGE:

Model	Production Date Range
Cadenza 3.3L ULEV, Forte 1.6L ULEV, Forte 1.8L SULEV, Forte 1.8L ULEV, Forte 2.0L SULEV, Forte 2.0L ULEV, K900 3.8L ULEV, K900 5.0L ULEV, Optima 1.6L ULEV, Optima 2.0 L ULEV, Optima 2.4L SULEV, Optima 2.4L ULEV, Optima HEV 2.4L SULEV, Rio 1.6L ULEV, Sedona 3.3L ULEV, Sorento 2.0L ULEV, Sorento 2.4L ULEV, Sorento 3.3L ULEV , Soul 1.6L ULEV, Soul 2.0L ULEV, Sportage 2.0L ULEV, Sportage 2.4L SULEV, and Sportage 2.4L ULEV	<p><b>2016MY</b> <b>(Sold in California only)</b></p>

2016MY DATA COLLECTION WARRANTY CLAIM INFORMATION:

**\* NOTICE**

As sufficient data is collected, individual line items per model may be closed without updates to the TSB. Once a line item is closed on DCS, no further data collection is required. Data collections initiated after a line item is closed are subject to chargeback.

SUBJECT:

## DATA COLLECTION: EXTRACT CALIFORNIA EMISSIONS DATA FROM ECU (DC16)

Campaign ID	Claim Type	Causal P/N	Qty	N Code	C Code	Repair Description	Labor Op Code	Time	Replacement P/N	Qty
DC16VG1	V	100CA EM999	0	N99	C99	CADENZA 3.3 ULEV	16VG33U1	0.3 M/H	N/A	0
DC16YD1						FORTE 1.6 ULEV	16YD16U1			
DC16YD2						FORTE 1.8 SULEV	16YD18S1			
DC16YD3						FORTE 1.8 ULEV	16YD18U1			
DC16YD4						FORTE 2.0 SULEV	16YD20S1			
DC16YD5						FORTE 2.0 ULEV	16YD20U1			
DC16KH1						K900 3.8 ULEV	16KH38U1			
DC16KH2						K900 5.0 ULEV	16KH50U1			
DC16JF1						OPTIMA 1.6 ULEV	16JF16U1			
DC16JF2						OPTIMA 2.0 ULEV	16JF20U1			
DC16JF3						OPTIMA 2.4 SULEV	16JF24S1			
DC16JF4						OPTIMA 2.4 ULEV	16JF24U1			
DC16TFH1						OPTIMA HEV 2.4 SULEV	16TFH24S			
DC16UB1						RIO 1.6 ULEV	16UB16U1			
DC16YP1						SEDONA 3.3 ULEV	16YP33U1			
DC16UM1						SORENTO 2.0 ULEV	16UM20U1			
DC16UM2						SORENTO 2.4 ULEV	16UM24U1			
DC16UM3						SORENTO 3.3 ULEV	16UM33U1			
DC16PS1						SOUL 1.6 ULEV	16PS16U1			
DC16PS2						SOUL 2.0 ULEV	16PS20U1			
DC16SL1						SPORTAGE 2.0 ULEV	16SL20U1			
DC16SL2						SPORTAGE 2.4 SULEV	16SL24S1			
DC16SL3						SPORTAGE 2.4 ULEV	16SL24U1			