



Volkswagen

Service Information

Diagnostic Device Hardware & Windows®

Number: VHW-16-09

Subject: VAS 6150D Diagnostic Laptop – Unpacking and Setup Instructions

Date: Apr. 13, 2016

Supersedes VHW-16-03 due to updated VAS 6154 Diagnostic Interface information.

Table of Contents

Section	Page
1.0 Introduction	2
2.0 Additional Documentation	2
3.0 Safety Instructions	2
4.0 Important Information	5
5.0 Unpacking Instructions	6
6.0 Contents of Carton	6
7.0 Battery Safety & Access	7
8.0 Connecting to Power	8
9.0 Windows 7 Startup & Initial Setup	8
10.0 Network Setup & Internet Explorer Version	13
11.0 Install Offboard Diagnostic Information System Service (ODIS Service)	17
12.0 Setup Diagnostic Interface	17
13.0 Windows 7 Update Management	18
14.0 Warranty Registration	20
15.0 Malfunctions and Support	20



Note

- ***Please read these instructions carefully and in their entirety before performing any procedures. If you do not understand these instructions, arrange to have a qualified person perform these procedures.***
- ***Heed all prerequisite requirements and notes. Follow all instruction steps in the Section order given and heed all cross-references to the additional Service Information documentation required.***
- ***Discard all printed copies of this document after use. Revised versions may be issued at any time. Always check ServiceNet for the latest version.***



Service Information

1.0 – Introduction

This document contains all instructions required to unpack and prepare **new VAS 6150D Diagnostic Laptops** for workshop service. Instructions include references to other **Service Information (SI)** documents containing additional instructions.

IMPORTANT!

The instructions provided here supersede those in the Panasonic manuals and VAS 6154 Diagnostic Interface initial setup instructions included with the laptop shipment.

2.0 – Additional Documentation

Obtain the following documents from ServiceNet before proceeding with unpacking & setup:

Vehicle Diagnostics SI Document Subcategory	Document Titles
ODIS Service	<input type="checkbox"/> Installation Phase 1 – Preparation, License & Security Certificate Process Instructions <input type="checkbox"/> Installation Phase 2 - Software Installation & Configuration Instructions
Diagnostic Device Hardware & Windows	<input type="checkbox"/> VAS Diagnostic Device Computer Name Builder <input type="checkbox"/> VAS 6154 Diagnostic Interface – Introduction Guide <input type="checkbox"/> VAS 6154 Diagnostic Interface – Initial Setup Guide <input type="checkbox"/> VAS 6154 Diagnostic Interface – Startup Guide

3.0 – Safety Instructions

3.1 – Explanation of Symbols

Symbols with the following meanings are used in this document and elsewhere:



Warning!

Text with this symbol contains information regarding your safety and how you can reduce the risk of serious or fatal injuries. The **Warning** symbol deserves special attention with respect to your safety.



Caution!

Text with this symbol contains information on how you can prevent damage to the vehicle and to the device. The **Caution** symbol informs you that failure to comply with such information can result in damage to the vehicle and/or tester.



Note

*Text with this symbol contains additional, useful information. The **Note** symbol indicates important information on the product, its use and other items.*



Service Information

3.2 – Reference to Additional Safety Instructions

The following contains the general safety instructions that apply to all VAS diagnostic laptop and tablet devices. Additional safety instructions can be found in the applicable device Operating Manuals. Safety instructions may also appear on the screen of the tester and displayed by the diagnostic software. Heed all instructions displayed.

3.3 – Important Safety Instructions



Warning!

1. Read all instructions carefully and thoroughly.
2. If the power cable or unit is damaged, the equipment may be not used until inspected by a qualified technician.
3. Do not allow any cables or leads to drape over the edges of tables, benches or stands. Prevent hot parts or rotating fans from coming into contact with cables or leads.
4. Use of an extension cable is prohibited. When performing tests, only the specified cables and leads may be used.
5. Always unplug the equipment when it is not in use. Never unplug the power cable from the outlet by pulling on the cable. Grasp the connector to disconnect the equipment from the power outlet.
6. The tester may not be used in the vicinity of open fuel containers, as there is otherwise the risk of fire or explosion.
7. When you are working on internal combustion engines, ensure adequate ventilation. Otherwise, there is a risk of poisoning.
8. Use the equipment only in the manner described. Use only the accessories listed by the manufacturer.
9. Risk of explosion. The equipment has spark-generating components inside and for this reason must not be used in areas with flammable vapors. The equipment should be operated at a height of at least 460 mm (18 inches) above the floor, since gasoline and other possible vapors collect at floor level.
10. The equipment complies with Safety Class 1 when under power and is equipped with a safety tested power cable. Connect the equipment only to electrical service or power outlets with a grounded protective conductor (TN network).
11. Fasten the diagnosis laptop securely to the rear seat of the vehicle during test drives. A second person on the rear seat must operate the diagnosis laptop. For safety reasons, operation on the front seat and without being fastened securely is prohibited (e.g. risk of triggering the airbag).

(cont.)



Service Information



Warning!

12. Electric ignition systems have voltages of up to approx. 30 kV. General Safety guidelines for workshops are to be observed at all times.
13. Opening of the tester, including its accessories, by unauthorized personnel can result in serious risk to the individual and the equipment.
14. If the power cable, a diagnostic or measuring cable, the tester or any other accessory under power is damaged, their use is prohibited until a qualified technician has given approval to do so.
15. If you will not be using the equipment for a longer period of time, please switch it off at the on/off switch and disconnect it from the power if the rechargeable battery is charged. Switching off at the on/off switch alone does not ensure that the power supply, charging circuit or any connected accessory has been disconnected from power.
16. Data transmission lines should not be connected or disconnected during a thunderstorm nor should the equipment itself be operated.

3.4 – Safety Instructions for Wireless Units



Warning!

1. No antenna modifications, e.g. relocation or use of other antennas or transmitters, are permitted on units approved for wireless operation.
2. Do not use a portable transmitter (e.g. wireless network (WLAN) or Bluetooth® device) in the vicinity of unshielded detonator caps or in an explosive atmosphere, unless the device has been modified in a way that permits such use.
3. Information regarding Bluetooth and W-LAN approval in various countries may be found in the diagnostic software operating manual.

(cont.)



Service Information



Caution!

1. Line voltage fluctuations and deviations exceeding the permissible tolerance can result in malfunction and damage to the diagnostic device.
2. When operating the VAS 6150D in a workshop cart, ensure that the power adapter has adequate ventilation. Remember that the charging circuit is operating even when the tester is switched off. This is also true in the power saving mode.
3. When connecting other make vehicles:
 - The VAS 6150D diagnostic laptop was developed and specified for vehicles manufactured by the Volkswagen Group. Connecting the tester or diagnostic interface (VCI) directly to a vehicle from another manufacturer, may cause damage to the vehicle's electrical system.
 - If attempting to use the generally applicable OBD functions for self-diagnosis of other make vehicles, the OBD adapter cable VAS 5052/16 should be connected between the diagnostic head and diagnosis connection in the vehicle.
4. When handling the rechargeable battery:
 - The rechargeable battery should be replaced only by properly trained personnel.
 - Never short-circuit the rechargeable battery.
 - Never throw the rechargeable battery into a fire.
 - Dispose of/recycle the rechargeable battery only when discharged and in accordance with local regulations.

4.0 – Important Information

4.1 – Shipping Damage / Incomplete Shipment

Please check the following items when unpacking/starting your VAS 6150D:

1. Packaging damaged:
 - Have the damage confirmed in writing on the shipping documents by the delivery service and report it immediately.
2. Packaging in good condition, but contents damaged:
 - Report damage to Snap-on immediately.
3. Incomplete shipment:
 - Please check the contents list as per instructions in **Section 6.0 – Contents of Carton** to determine whether your shipment is complete. Report issues to Snap-on immediately.



Volkswagen

Service Information

4.2 – Temperature Equalization



Caution!

If the VAS 6150D is delivered during winter months, efforts must be made to prevent the formation of condensation within the device. For this reason it is recommended to leave the device unattended at room temperature for approximately 3 hours prior to connecting and switching on to allow for temperature compensation.

4.3 – Safety and Startup Instructions

Please review the Safety and Startup instructions very carefully prior to startup.

4.4 – Purchase Documentation

Please retain your shipping documents as proof of purchase and delivery.

5.0 – Unpacking Instructions

VAS 6150D are delivered with the laptop, docking station and VAS 6154 all packed separately in a main shipping box.

1. Unpack all contents, then remove the protective film from the laptop and docking station.
2. Dispose of the packaging material in accordance with local regulations.
3. Check the contents for damage and completeness > **Section 6.0 - Contents of Carton.**
4. Report damaged contents and incomplete shipment issues **immediately** to Snap-on (SBS).

6.0 - Contents of Carton

Confirm your VAS 6150D shipment contains the following items (check the boxes provided):

- ☐ 1. VAS 6150D
- ☐ Rechargeable battery* (is pre-installed)
- ☐ 2. Docking Station (port replicator)
- ☐ 3. A/C Power Adapter /cables
- ☐ 4. VAS 6154 Diagnostic Interface with add-on modules, cables etc.
- ☐ Service Manager Cover Letter*



*Not shown



Volkswagen

Service Information

7.0 - Battery Safety & Access

Caution!

When handling the rechargeable battery:

- The rechargeable battery should be replaced only by properly trained personnel.
- Never short-circuit the rechargeable battery.
- Never throw the rechargeable battery into a fire.
- Dispose of, or recycle the battery only when completely discharged and in accordance with local regulations.



Note

*The battery is pre-installed in the laptop prior to shipment **and does not require any further setup.** The information below is for future reference only.*

If it becomes necessary to remove and reinstall the battery, **switch the laptop off** and proceed as follows:

1. Carefully turn the laptop over.
2. Slide and hold the **battery lock button** in the unlock position, then grasp the battery on its **raised edge** and slide out of housing:



3. Install in reverse order. (It is not necessary to hold the battery release button during installation.)



Caution!

Ensure battery pack locks into place to prevent accidental loss during transport.



Service Information

8.0 – Connecting to Power

The laptop is connected to power either via the docking station (port replicator) connection to the A/C power adapter, directly via the A/C power adapter or run from the internal rechargeable battery pack.



Caution!

- The A/C power adapter includes a country-specific power cable (UL-approved or CSA-approved, oil-resistant power cord).
- Operation on ungrounded or impedance-grounded electrical networks (IT electrical networks) is prohibited.
- Use only the original Panasonic power adapter.

9.0 – Windows 7 Startup & Initial Setup

9.1 – Preparation

Perform the initial startup with the **laptop removed from the docking station (port replicator)** and the **wireless operation switch** in the **OFF** position:

1. Open the **WIRELESS / Headphones / SD slot** access cover (right side – middle) and **confirm** the wireless operation switch is in the **OFF** position:



2. Assemble the A/C power adapter cables. Connect to a 115V A/C outlet and the **DC IN 15.6V** port:






Service Information

9.2 - Switching the Unit On and Off

Switch on the laptop by briefly pressing the on/off button. Automatic setup screens and device restart are followed by display of the initial Windows setup screen. No user intervention is required during this time.

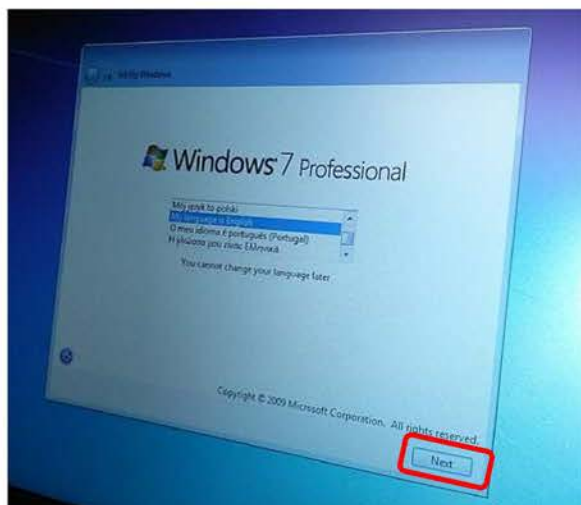


Caution!

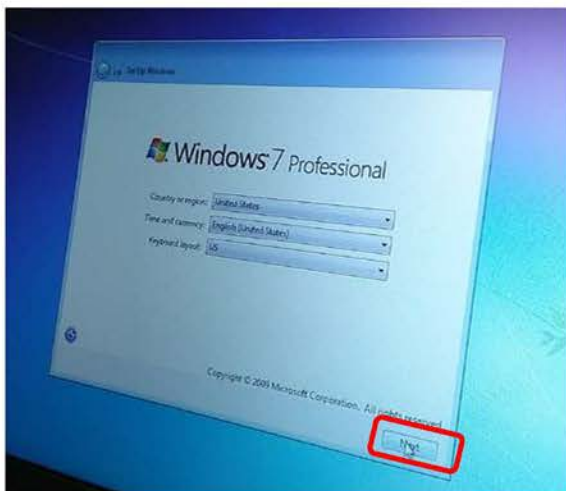
- When switching the tablet off after normal use, **DO NOT press and hold the on/off button for longer than 5 seconds!** This executes a forced shutdown which may result in hard drive faults.
- To switch the laptop after use: Go to Windows **Start**  **> Shut down**

9.3 – Windows 7 Professional Initial Setup

1. Carefully scroll down and select **My language is English**, and then click **Next**:



2. Confirm the regional settings, time/currency and keyboard layout, and then click **Next**:

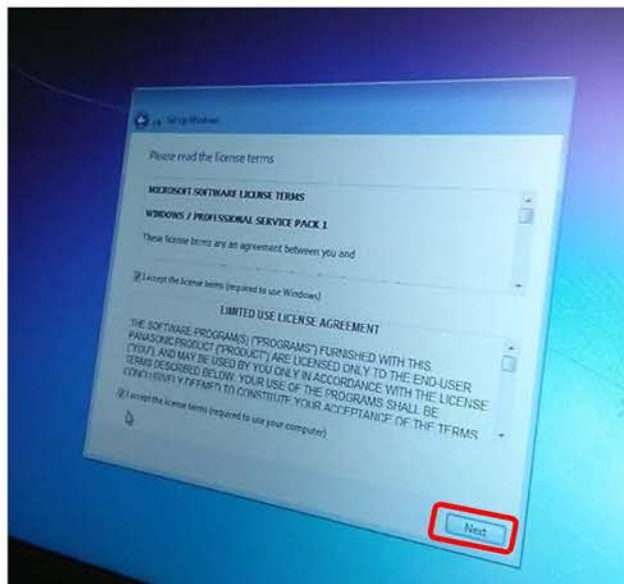


(cont.)

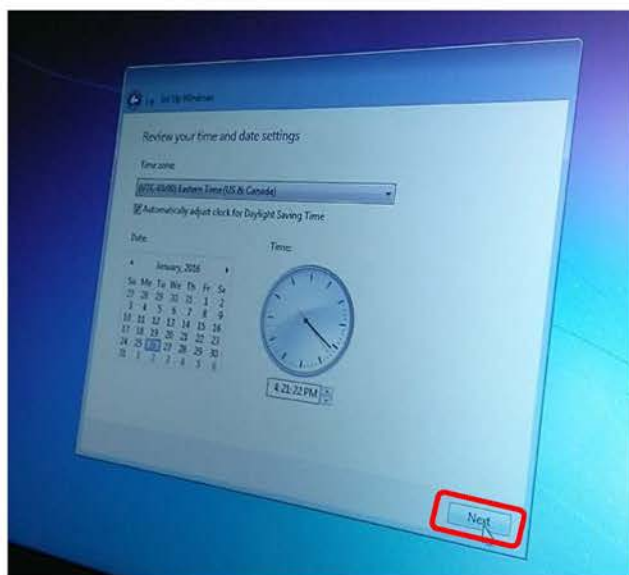


Service Information

3. Accept the **license terms** by checking the appropriate boxes, and then click **Next**:



4. Set the applicable **Time Zone, Daylight Saving Time, Date and Time**, and then click **Next**:



- Various settings are saved and the device automatically reboots to the Windows desktop.
- For convenience, the device can now be mounted to its base station **if desired** (not mandatory).
- In all cases **the A/C power adapter must remain connected** for the following procedures.

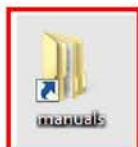


Service Information

9.3.1 – Delete Non-Applicable Information

The Windows 7 desktop includes a document folder with information not applicable to the -US/CDN-market. **Please delete the folder** as follows:

1. From the Windows desktop, right-click the **manuals** folder:



2. Select **Delete** from the dropdown menu, **confirm** the deletion when prompted and then **Empty** the Recycle Bin.

9.3.2 – Device Power Management

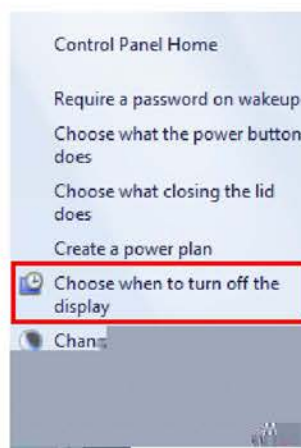
To ensure uninterrupted data transfer when performing lengthy Software Version Management (SVM) procedures, configure the device to **remain on** as follows:

1. Go to: **Control Panel > Power Options**:



Power Options

2. From the Control Panel Home menu, select **Choose when to turn off the display**:



3. Select **Never** from the dropdowns as illustrated:



4. Click **Save changes** (at bottom frame):





5. **Close** the power options window and return to the **Control Panel** menu.



Service Information

9.3.3 – Restart Windows


A restart is required to complete automatic Windows configurations. Proceed as follows, and note the **Windows 7 Shut down** and **Restart** routines for future reference:

1. Close all windows and **Restart** the device. Go to: Windows Start  >  > **Restart**:



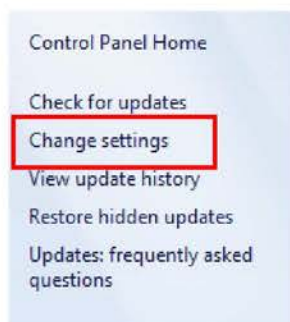
9.4 – Windows® Update Setting

Perform the following configuration **BEFORE** setting up the network connection:

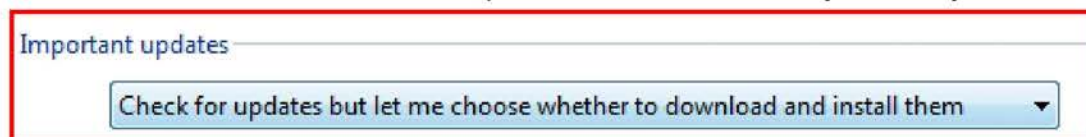
1. Go to: Windows Start  > Control Panel > Windows Update:



2. From the Control Panel Home menu, select **Change settings**:



3. Select the “**Check... & ...choose**” update method from the **Important updates** selection dropdown:



4. Click **OK** (at bottom frame):



5. **Close the Control Panel window.**



Service Information



Note

Retrieve the additional documentation specified in Section 2.0 before continuing with setup.

10.0 – Network Setup & Internet Explorer Version

10.1 – Set Computer Name

If more than one diagnostic laptop or tablet is connected to the dealership network, each device must be assigned a different computer name.

Assign the computer name before proceeding. For detailed instructions refer to **Service Information – Diagnostic Device Hardware & Windows** document title: **VAS Diagnostic Device Computer Name Builder**

10.2 – Enable Network Configurations

10.2.1 – General Configuration

For dealership networks using **DHCP** for Internet access, no network connection configuration is necessary (the device default setting is DHCP). If the dealership network uses DHCP for Internet access, skip to **Section 10.2.2** below.

For networks using **Static IP** configurations for Internet access, the IP configurations must be set by manual entry of **dealership-specific IP information**. Ask your dealership systems administrator or IT professional for details and assistance.

10.2.2 – Wireless Local Access Network (WLAN) Configuration

If the device is to be used over a WLAN connection, proceed as follows:

Prerequisite:

- ☐ DHCP, or static IPs enabled.

1. Open the **WIRELESS / Headphones / SD slot** access cover (right side – middle) and switch the wireless operation switch to the **ON** position:

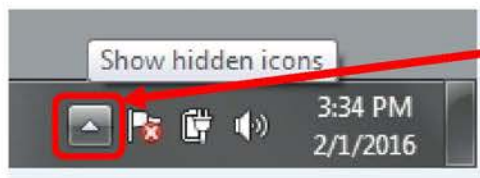


(cont.)

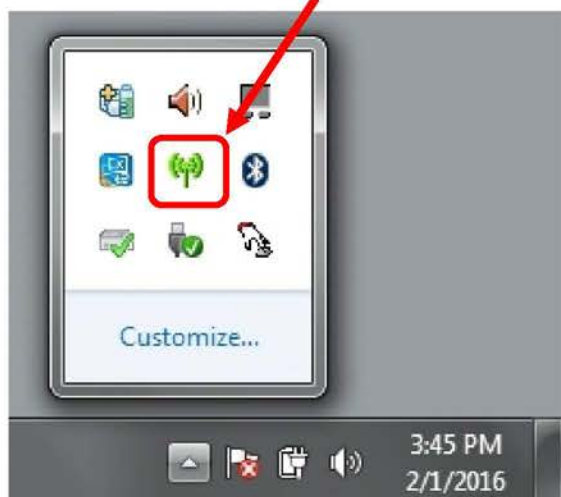


Service Information

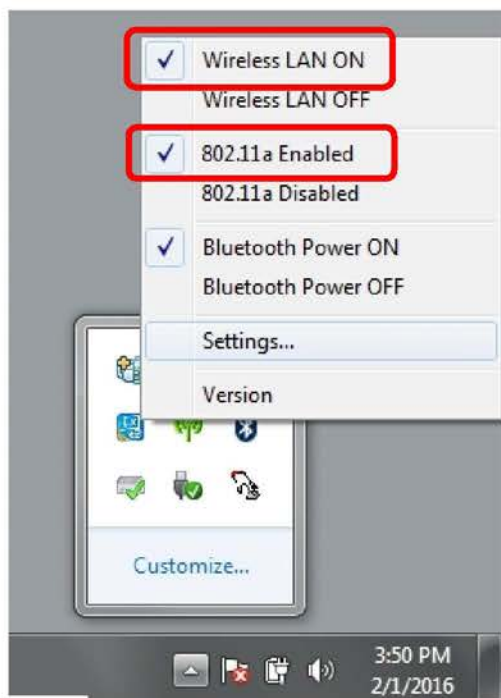
2. From the Windows taskbar (window footer), click the **Show hidden icons** arrow:



3. Click the **Wireless Connection Status** icon to reveal its status / selection submenu:



4. Enable the **Wireless LAN ON** and **802.11a Enabled** selections by **checking them** as illustrated: (The status / selection submenu must be reopened for each selection check.)

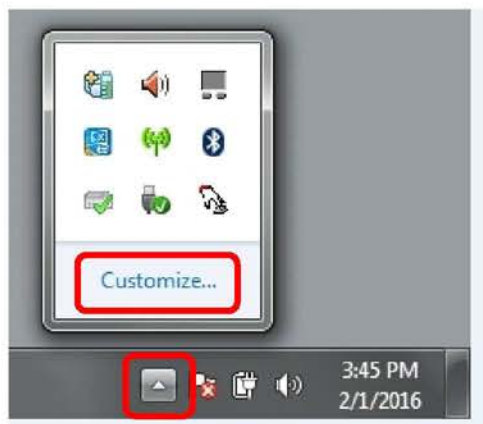


(cont.)

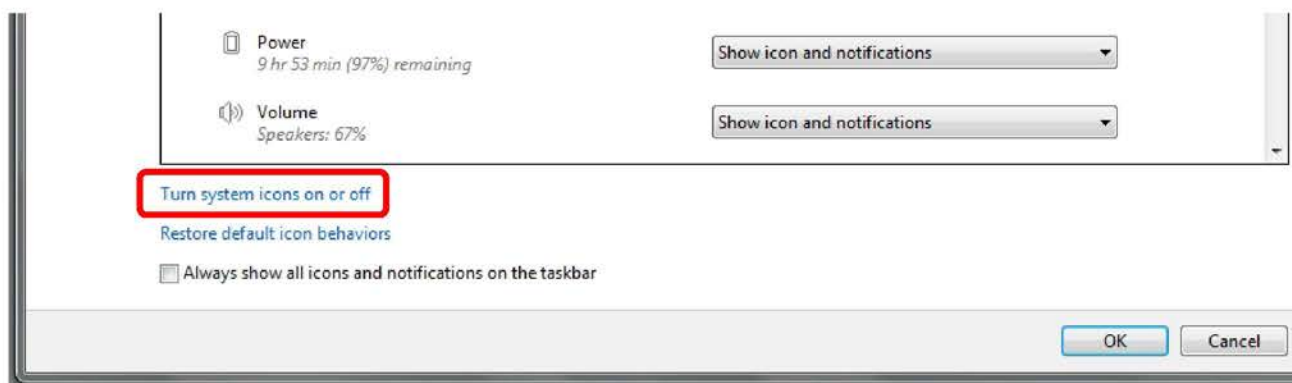


Service Information

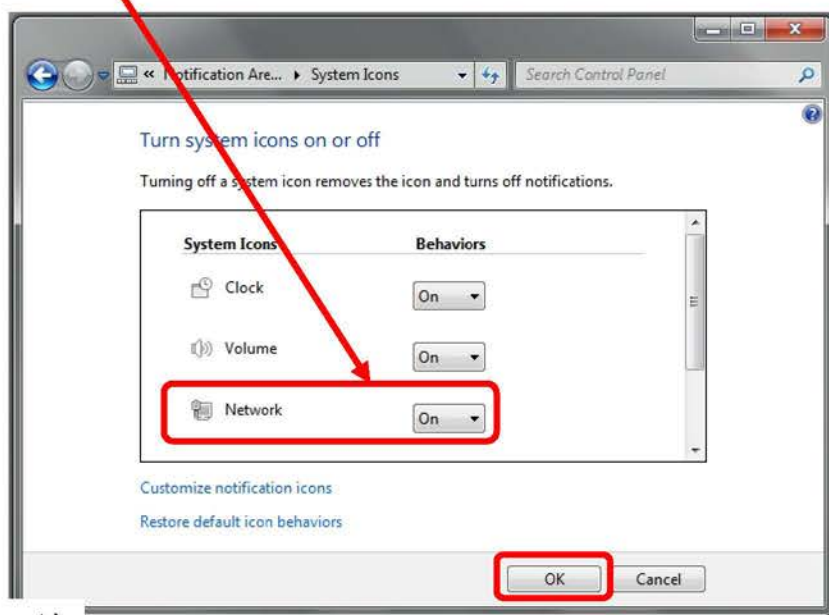
5. Click the **Show hidden icons** arrow again, and then click **Customize**:



6. Select **Turn system icons on or off**:



7. Select **On** from the **Network** system dropdown as illustrated, and then select **OK**:



(cont.)



Service Information

8. Close the remaining windows

Network Functions Tip for Pros:

For quicker access during use, consider selecting the **Wireless Connection Status** and **Bluetooth®** icons (and any others desired) from the **Hidden icons** window, and use the Windows “drag and drop” function to move them to the taskbar.

Example:



10.3 – Download & Install Internet Explorer 11

The Microsoft Internet Explorer version installed at the time of laptop manufacture is IE9.

For up-to-date browser support and optimum performance of web-based functions hosted by Volkswagen AG Group Services and VWGoA, we recommend **updating the browser to IE11 before continuing** with setup.

Prerequisite:

- ☐ Diagnostic device is able to openly connect to the Internet (DHCP, or static IPs enabled as per Section 10.2.1).



Note

The information below was current at the time of publication. IE11 availability via the Microsoft website category titles mentioned below are subject to change.

1. Launch **Internet Explorer** and go to the **Microsoft.com** website.
2. From the Microsoft main page header, navigate through **Products > Software & services > Internet Explorer**
3. Select **Get it now** or the equivalent marker for IE11 software download.
4. Follow the download and installation prompts.
5. Restart the device when prompted.
6. Allow the Windows update configurations to **run undisturbed** on shutdown and restart.

[Proceed to Section 11.0](#)



Service Information

11.0 – Install Offboard Diagnostic Information System Service (ODIS Service)

Request an **ODIS Service license and security certificate**, and then install and configure the latest ODIS Service application and diagnostic database versions available from the VWAG Web-Server.

For detailed instructions, refer to **Service Information - ODIS Service** document titles (in order of use):

- **Installation Phase 1 - Preparation and License Request Instructions (eShop)**
- **Installation Phase 2 - Software Installation & Configuration Instructions**



Note

Please remember to specify the use of a VAS 6154 Diagnostic Interface during the ODIS Service installation process.

12.0 – Setup Diagnostic Interface

12.1 – VAS 6154 Diagnostic Interface

Familiarization:

Refer to **Service Information - Diagnostic Device Hardware & Windows** document title:
VAS 6154 Diagnostic Interface – Introduction Guide

Initial Setup:

For detailed instructions refer to **Service Information - Diagnostic Device Hardware & Windows** document title: **VAS 6154 Diagnostic Interface – Initial Setup Guide**

Startup:

For detailed instructions refer to **Service Information - Diagnostic Device Hardware & Windows** document title: **VAS 6154 Diagnostic Interface – Startup Guide**

12.2 – VAS 5054A Diagnostic Interface (Optional)

The Bluetooth configuration of an existing **VAS 5054A Diagnostic Interface** can be performed if desired.

Windows Bluetooth & EDIC Configuration:

For detailed instructions refer to **Service Information - Diagnostic Device Hardware & Windows** document title: **VAS 5054A Diagnostic Interface – Bluetooth & EDIC Configuration**

USB Configuration:

For detailed instructions refer to **Service Information – Diagnostic Device Hardware & Windows** document title: **VAS 5054A Diagnostic Interface – USB Configuration**



Service Information

13.0 – Windows 7 Update Management

13.1 – General Information

All VAS diagnostic devices must be kept up-to-date with the latest Windows security and vulnerability updates. However, dealership service or IT personnel tasked with maintaining both ODIS Service and Windows updates **must be aware of the following, and act accordingly:**

- The initial package of important Windows updates available for Windows 7 may take 90 minutes or more to install and download, depending on content and dealership bandwidth.

As a result, we recommend that the initial selection, download and installation of Windows updates **be managed so that the initial and subsequent Windows update process takes place outside of workshop service hours, or as per dealership IT policies that may apply.**

Instructions on how to initiate Windows updates follow.


13.2 – Managed Windows Update Procedure

Use the following procedure to manually check for updates.

If a Windows message stating that new updates are available appears, skip to Step 3.

Prerequisites:

- ☐ Laptop removed from service, after hours etc. (recommended).
- ☐ Active network connection available.

1. Go to: Windows Start  > Control Panel > Windows Update:



2. Click **Check for updates:**

Windows Update



(cont.)



Service Information

This process may take some time to complete. Please be patient:

Windows Update



3. When the results are displayed, select **Install Updates**:

Windows Update



Note

- The illustration above **is for reference only!** The number of available updates always varies depending on the date when available updates are checked.
- It is recommended to not download and install “Optional” updates. For details refer to **Service Information – Diagnostic Device Hardware & Windows** document title: **Optional Windows Updates**

4. **Wait** while the updates are downloaded and installed (no user intervention is necessary):

Windows Update



Windows Update



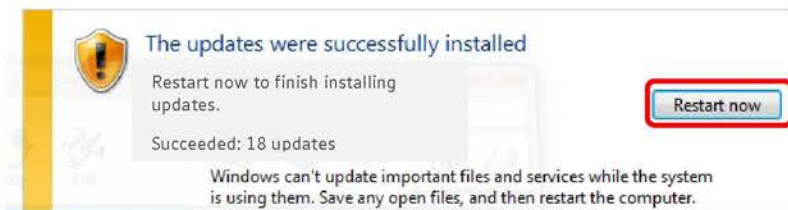
(cont.)



Service Information

5. Click **Restart now**:

Windows Update



- Additional Windows update configurations are performed during the shut-down and restart routine.
- On completion, the device boots to the Windows desktop, and an information prompt on the installed updates appears.

14.0 – Warranty Registration

A formal registration process for warranty coverage is not necessary.

The device serial number was automatically registered with the US/CDN market service provider for warrantable repairs at the time of purchase.

In case of warranty repair requests, please provide the serial number of the device to the **VWGoA DTSS consultant** at the toll-free number listed below.

15.0 – Malfunctions and Support

All VAS 6150D are tested before leaving the factory. Selected components and numerous quality control inspections ensure high reliability of your new diagnostic laptop.

Should performance or functional issues occur after placing the device into service, please attempt to identify and localize as accurately as possible. Try to determine if the symptom is a result of the Panasonic CF-54 laptop **hardware**, Windows **operating system**, and ODIS Service **software** or dealership **network** (for internet connectivity). Then proceed as follows:

- Review the latest **Service Information** and **FAQ** documents in the **Diagnostic Device Hardware & Windows** document subcategory of the **Vehicle Diagnostics** section in **ServiceNet**. The issue may be previously known and a resolution already published.
- For **ODIS Service diagnostic software functional issues**, review the latest **Service Information** and **FAQ** documents in the **ODIS Service** document subcategory of the **Vehicle Diagnostics** section of **ServiceNet**. The issue may be previously known and a resolution already published.
- If it is not possible to resolve the issue with the aid of the ServiceNet documents, contact:

VWGoA DTSS: 1-888-896-1298