



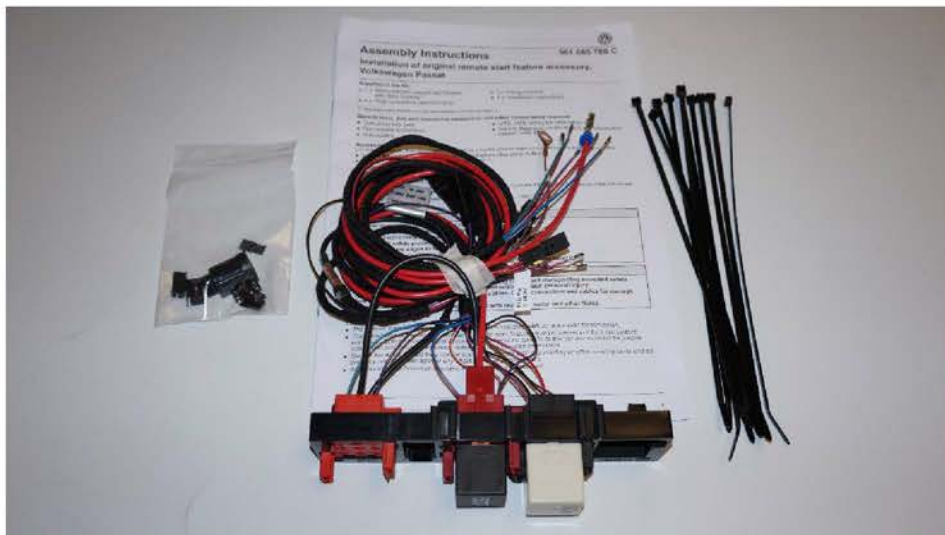
Quick tip

Version 1.2

11-4, 2016

Title: Remote start for 2016 Passat GP 1.8t (ULEV) without Kessy.

Part number: 561065760C



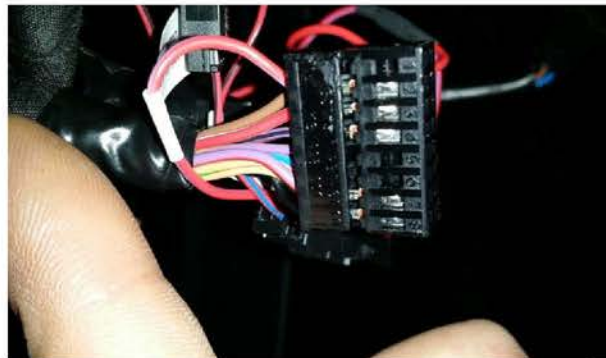
Kit contents: Relay panel with harness, connectors, micro switch's, cable ties, instructions.



Additional parts required: Key part number 561837202D INF. Vehicles without fog lights, **BCM MUST be replaced** refer to ETKA for part number



Steering column control unit J527



Step 1: Disconnect battery, Remove lower column cover, storage box and lower foot well trim panel.

Step 2: Remove black wire in position 14 and push it into position 7 (If there is a wire in position 7 just insulate the wire removed from position 14). Remove wire from position A6 and insert into splice connector, Insert red/black wire into position A6, Remove the wire from position A1 and insert it into the splice connector, Insert the red/violet wire into position A1. Insert black wire into position 14.

Steering column ground



Step 3: Remove 8mm nut and add the brown ground wire to the steering column ground location.

Head lamp switch



Step 4: Remove terminal out of location 4 and insert into location 1 of supplied connector. Insert the black/violet wire back into location 4.



BCM



Step 5: Remove and insulate wires in locations C31, B29.

Step 6: Move the wire from location C14 to B13 and from location B28 to A3.



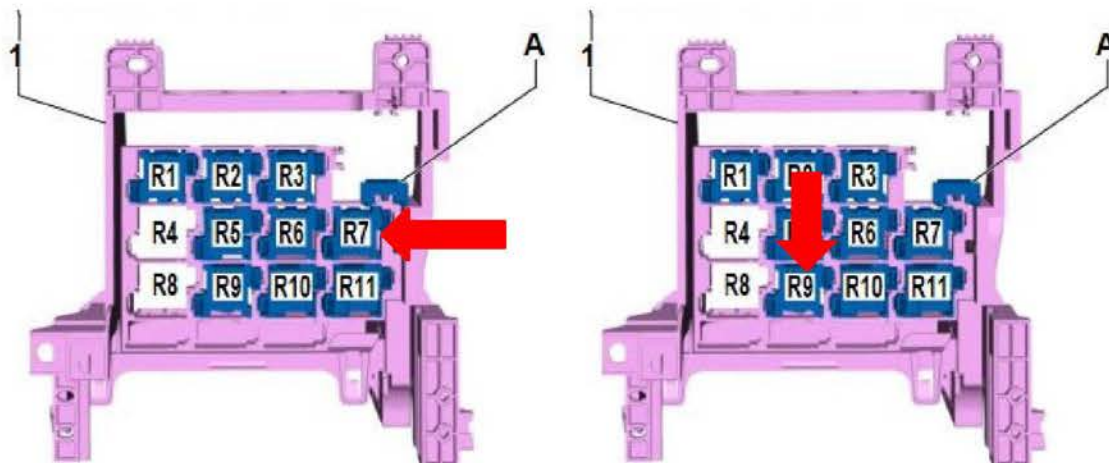
Step 7: Insert the red/blue wire into location B14, Insert the black wire into location C31, Insert the red/white wire into location C34, Remove the wire from location C30 and insert into the supplied connector position 1 and connect to the violet/white wire connector.

Step 8: Mount new relay panel to the BCM and insert the new start relay in the connector. Remove and discard original starter relay.



Black connector is connector A
White connector is connector B
Brown connector is connector C

Starter Relay



Step 10: Unlock starter relay -2- printed with "645" and remove. Located in position R7 shown above. Install relay into the new relay holder in the kit. Insert new relay and relay connector into a free spot in the relay panel.

Step 11: Remove the black wire from the 15 power relay (location R9). Connect this wire into the Y-Adapter. Insert the free wire back into relay connector.

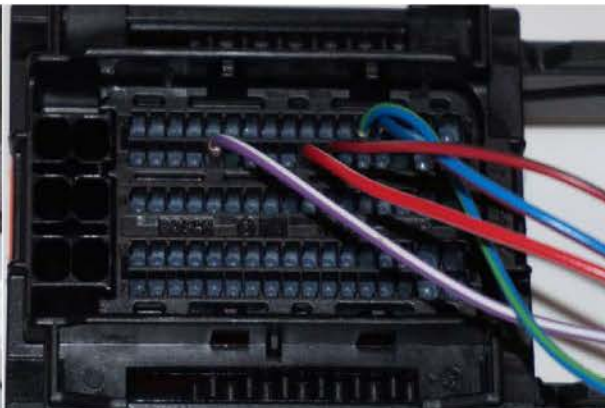


ECM



Step 12: Pass the remote start harness into the engine bay.

NOTE: The grommet shown above is for vehicles with a manual transmission. It is acceptable to cut a hole in this grommet to pass the harness through to the engine bay.



Step 13:

Red/Black wire B68 (Remove and insulate wire already in this location if applicable)

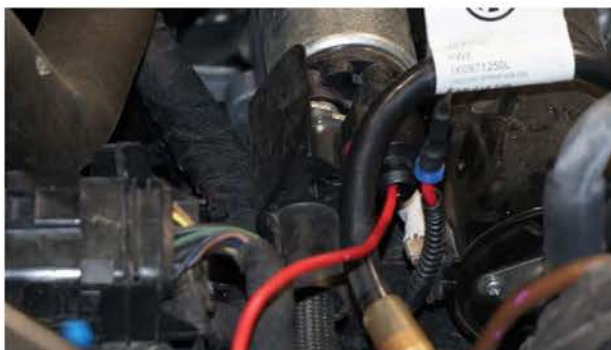
Red/White wire B67

Blue/Red wire B88

Blue/Green wire B87

Violet/White wire B62

Starter



Step 13: Remove the red wire from the starter solenoid connector. Insert the red wire from the kit in the connector. Insulate the red wire removed from the starter connector.



Step 14: Check to see if hood latch micro switch is already installed. If so skip this step, If not remove hood latch and install the micro switch into the hood latch.



Step 15: Re-install all connectors and trim panels removed during work. Re-connect battery.

Step 16: Connect battery charger and scan tool. Perform GFF scan, Adapt all key(s), Adapt remotes. Under software version management select adapting software, perform conversion/retrofit (option 3) and use SVM code 3740D.

Step 17: Perform functionality test on remote start system.