



Tech Tips

TT 70-16-01

Date: May 13, 2016

2016 Passat – Center Console Installation Tips

MY 2016 Passat center console has S-Clips installed in 3 of the 4 available locations (see figures 1 and 2 below). Please note that the clip in the position indicated by the red circle is omitted by design in production.



Fig. 1

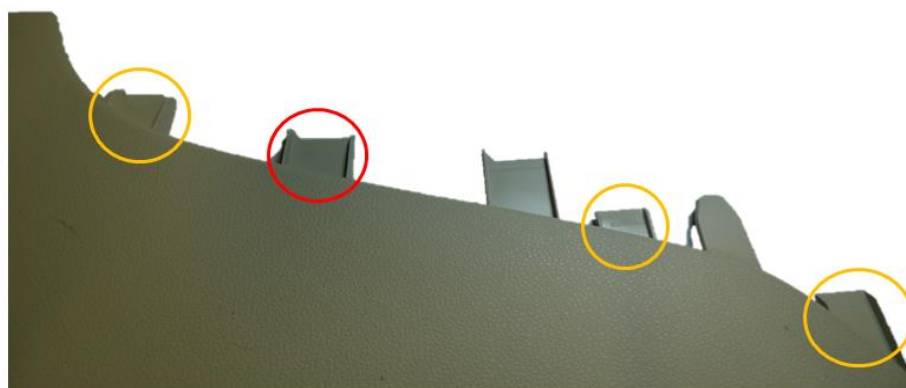


Fig. 2

Service Information

**NOTE:**

The clip outlined by the red circle is omitted from the factory. An additional clip can be added to this location if necessary. Part number: WHT-004-816 (The part number provided is for reference only, please see ETKA for the latest part information).

Place seat in the rear-most position. If necessary, the seat may be unbolted and carefully moved to access the retaining clip locations. Follow the proper seat removal/installation procedure in Elsa.



Fig. 3

Inspect all retaining clips for proper seating on the console in the locations shown in figure 4.

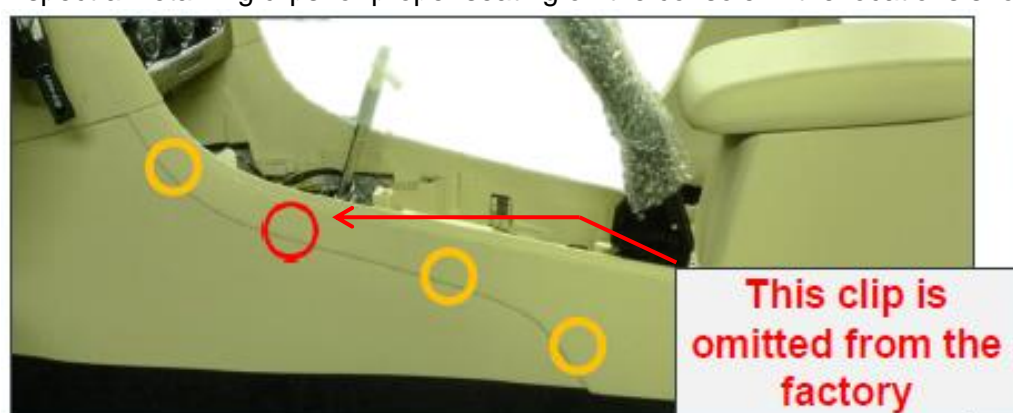


Fig. 4

Service Information

Insert trim guide into bracket (figure 5).

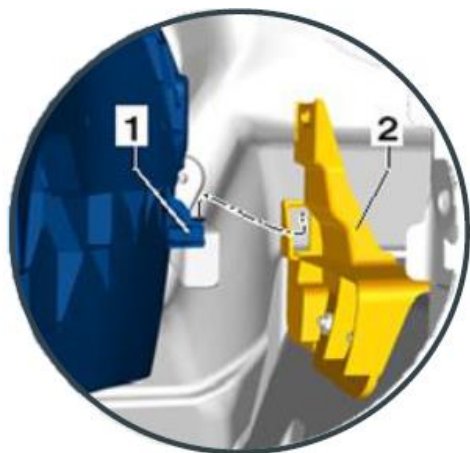


Fig. 5

Align the trim with the retaining clips, ensuring that the sound deadening does not bind on the console (figure 6).

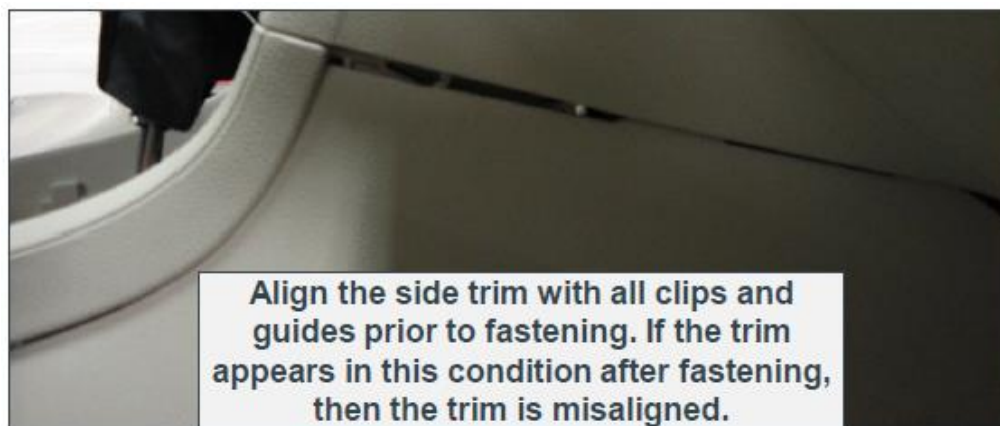


Fig. 6

Service Information

Insert trim into the retaining clips. An audible “click” will occur when the trim is securely fastened (figure 7).



Note:

If the side trim is difficult to install, this does not mean the trim is warped. Adjustments may need to be made to the retaining clips. Do not replace the side trim unless visibly damaged.



Fig. 7

Perform pull test in the location shown (figure 8) to verify the repair.

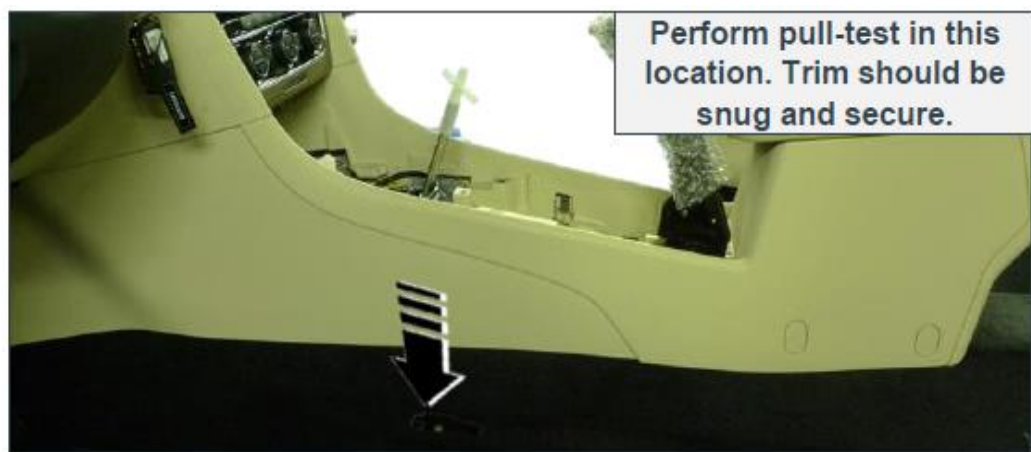


Fig. 8