



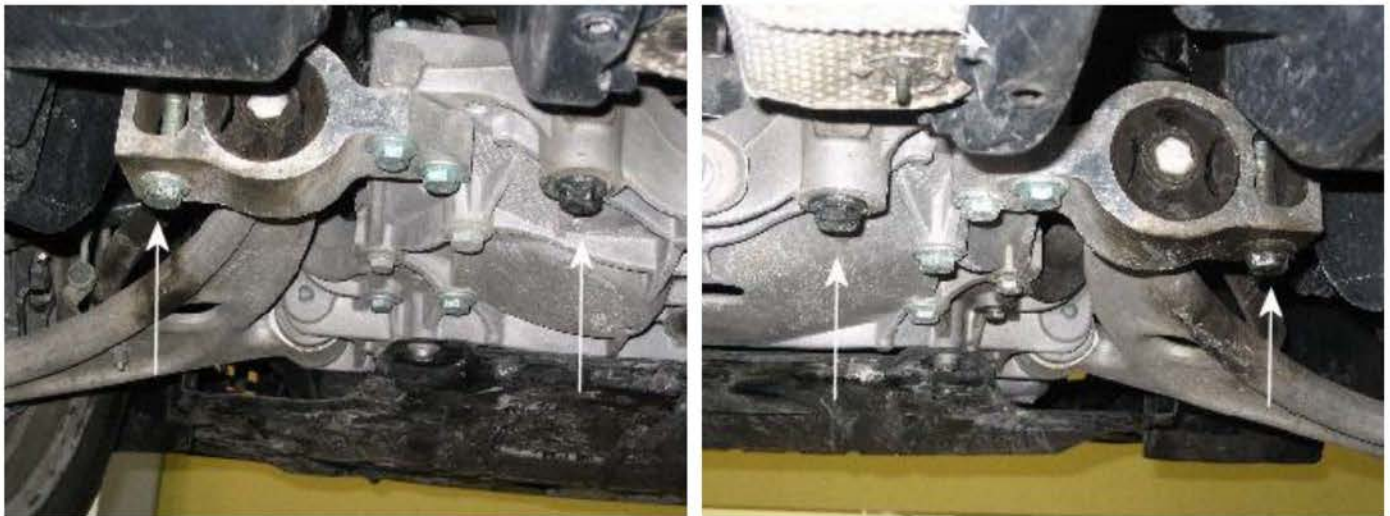
Tech Tips

TT 40-16-01

Date: June 3, 2016

2013-2016 CC - Knocking Noise from Vehicle Front, Typically occurs only one time after each direction change (forward or backward, left or right)

If this concern is identified, inspect to see if the two specialty plates (washers), Part No: 7M3499349A, is installed between the sub frame and body. If not, please perform the following:



- Loosen by two turns, the four bolts towards the rear of the sub frame.
- Remove one inboard bolt.



- Insert washer Part No. 7M3499349A between sub frame and body, centered on the hole with tabs of washer pointing rear and down as shown.
- Insert a new bolt and hand tighten.
- Repeat the above procedure with second inboard bolt.
- Tighten all 4 bolts, in accordance to Repair Manual Group 40 Front suspension, driveshaft in ElsaWeb



Note:

Sub frame bolts MUST be replaced after every removal.