

# TECHNICAL BULLETIN

LTB00915NAS2  
04 APR 2016



© Jaguar Land Rover North America, LLC

NOTE: The information in Technical Bulletins is intended for use by trained, professional Technicians with the knowledge, tools, and equipment required to do the job properly and safely. It informs these Technicians of conditions that may occur on some vehicles, or provides information that could assist in proper vehicle service. The procedures should not be performed by 'do-it-yourselfers'. If you are not a Retailer, do not assume that a condition described affects your vehicle. Contact an authorized Land Rover service facility to determine whether this bulletin applies to a specific vehicle.

**This reissue replaces all previous versions. Please destroy all previous versions.**

Changes are highlighted in gray

## **SECTION: 501-03**

### Tailgate Harness Outer Sleeve Incorrectly Located

#### **AFFECTED VEHICLE RANGE:**

##### **Range Rover Sport (LW)**

**Model Year:** 2014 Onwards  
**VIN:** 001154 Onwards  
**Assembly Plant:** Solihull

#### **MARKETS:**

NAS

#### **CONDITION SUMMARY:**

**Situation:** Water ingress through the tailgate may be evident and/or the tailgate aperture seal may be deformed in the area of the tailgate harness rubber sleeve.

**Cause:** This may be caused by incorrect harness location within the outer rubber sleeve.

**Action:** Should a customer express this concern, follow the Service Instruction below.

#### **PARTS:**

LR061643	Tailgate Aperture Seal	Quantity: 1
LR055988	Clips	Quantity: 2

#### **WARRANTY:**

 **NOTE:** Repair procedures are under constant review, and therefore times are subject to change; those quoted here must be taken as guidance only. Always refer to TOPIx to obtain the latest repair time.

 **NOTE:** DDW requires the use of causal part numbers. Labor only claims must show the causal part number with a quantity of zero.

DESCRIPTION	SRO	TIME (HOURS)	CONDITION CODE	CAUSAL PART
Tailgate - Harness - Outer sleeve - Modification	76.11.89.98	0.1	34	LR058450

 **NOTE:** Normal Warranty procedures apply.

#### **SERVICE INSTRUCTION:**


1. Open the tailgate.

2.  **NOTE: tailgate shown removed for clarity only.**

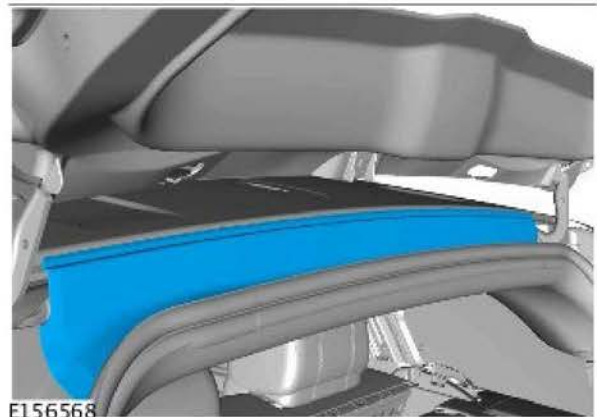
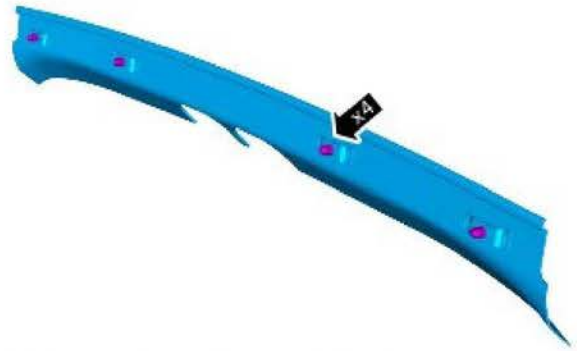
Remove the tailgate aperture seal.



E188586

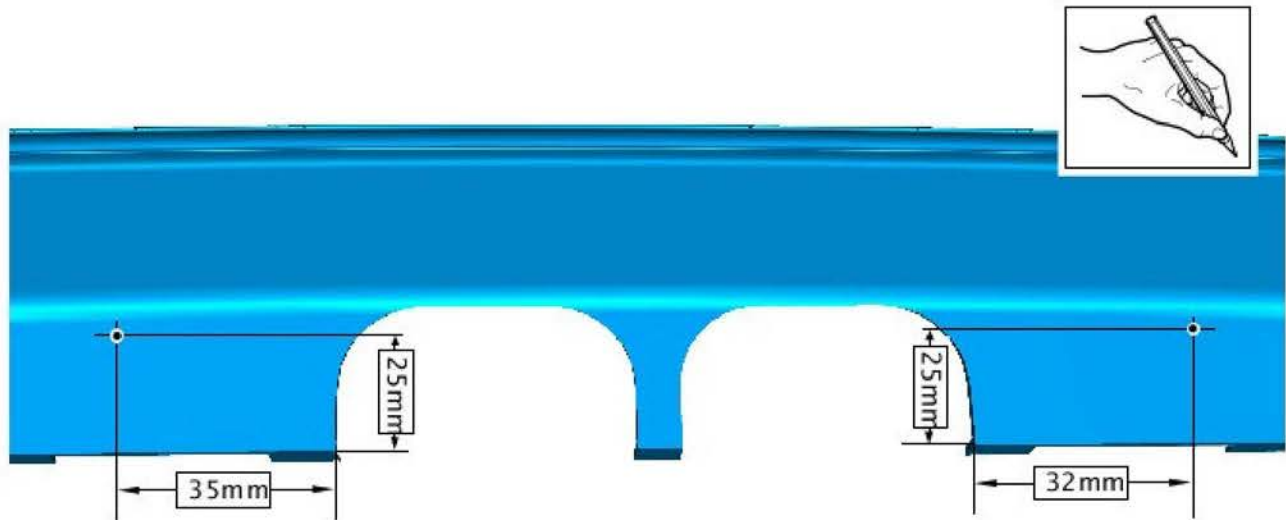
3.  **CAUTION: make sure no damage is caused to the vehicle or the tailgate trim.**

Remove the tailgate trim.



E156568

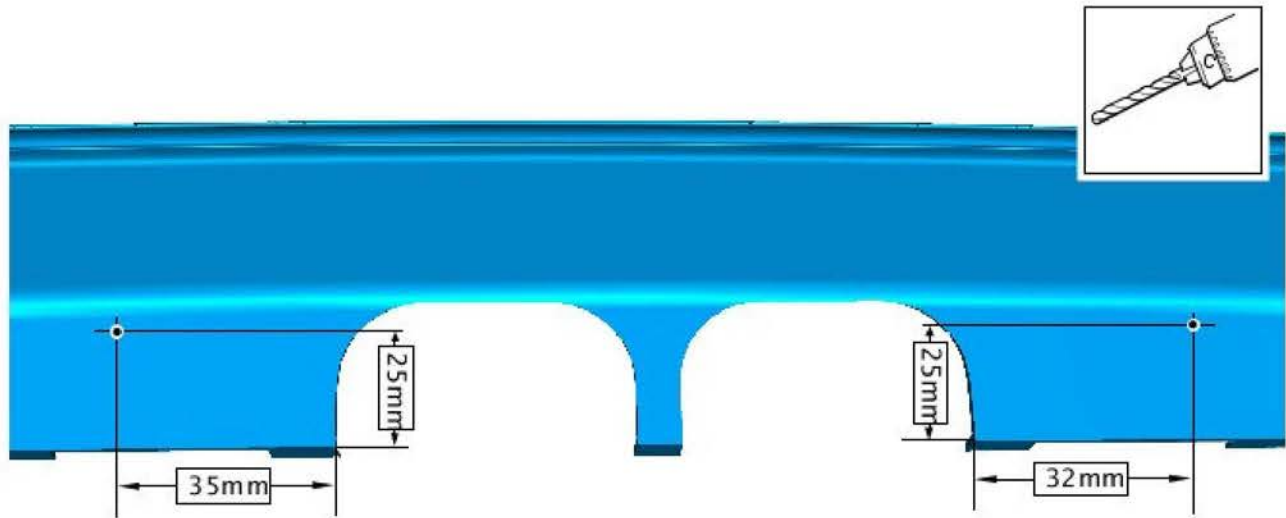
4. Using a suitable tool, measure and mark the area shown.



E188583

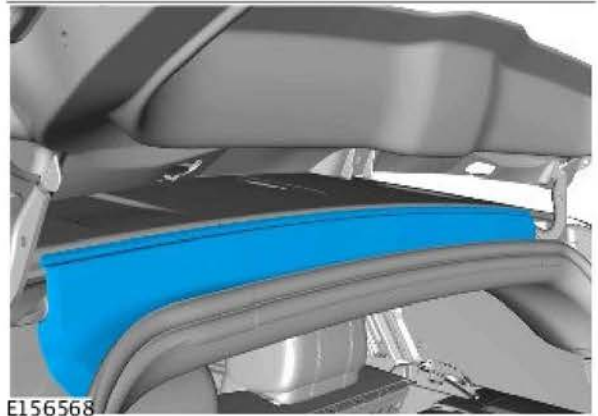
5.  **CAUTION:** make sure no damage is caused to the tailgate trim.

Drill two 7mm holes in the area shown.



E188582

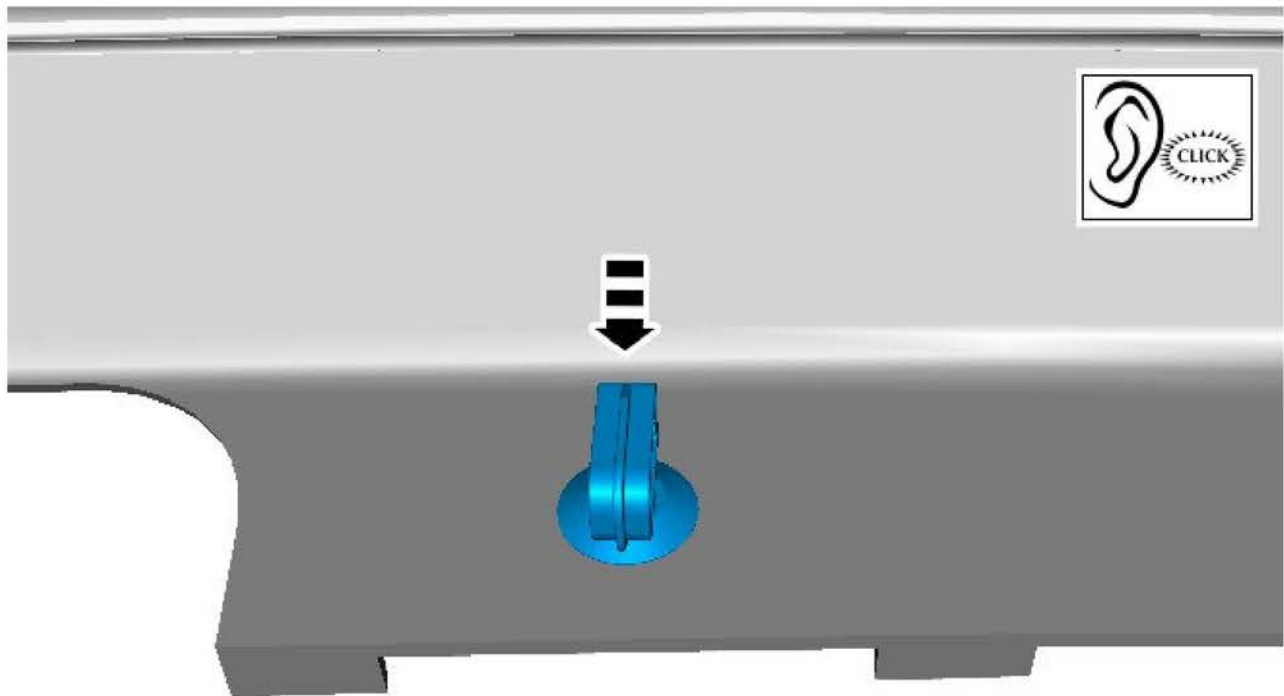
**6.** Install the tailgate trim.



E156568

7.  **NOTE: repeat this step on both sides of the vehicle.**

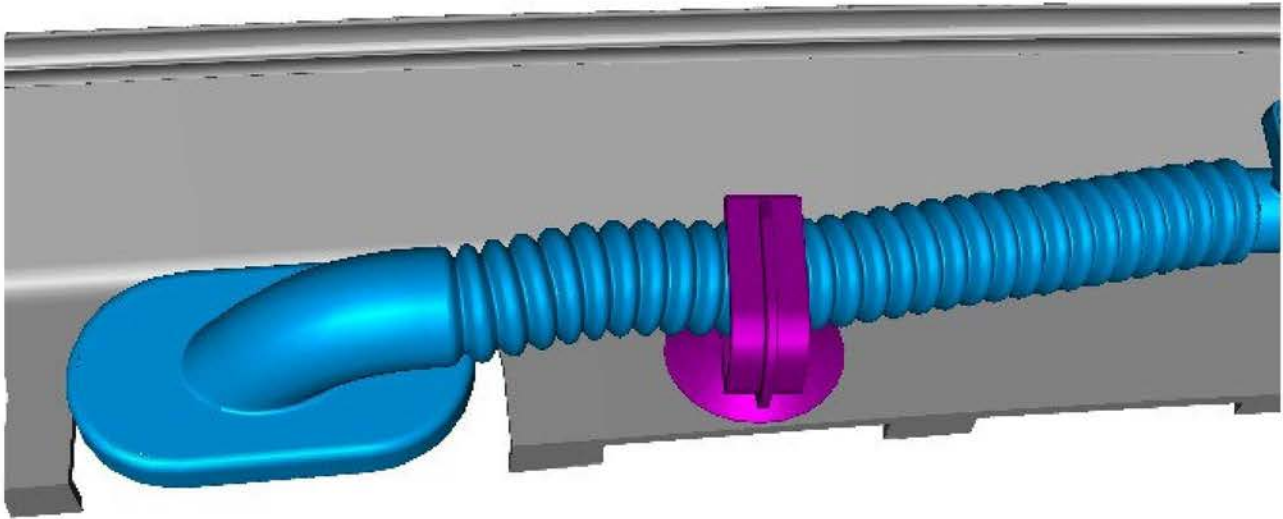
Install one tailgate harness clip into each of the holes drilled in Step 5.



E188584

8.  **NOTE: repeat this step on both sides of the vehicle.**

Locate and install the tailgate harness into the two tailgate harness clips and fully secure and close the clips.



E188585

9.  **NOTE: tailgate shown removed for clarity only.**

Install a new tailgate aperture seal.



E188586

10. Close the tailgate.