



Service Bulletin

PRELIMINARY INFORMATION

Subject: Malfunction Indicator Lamp Illuminated With DTC P0300

| Brand: | Model: | Model Year: | | VIN: | | Engine: | Transmission: |
|-----------|--------|-------------|------|------|-----|----------------|---------------|
| | | from | to | from | to | | |
| Buick | Encore | 2016 | 2017 | ALL | ALL | 1.4L (RPO LE2) | ALL |
| Chevrolet | Cruze | 2016 | 2017 | ALL | ALL | 1.4L (RPO LE2) | ALL |
| Chevrolet | Malibu | 2016 | 2017 | ALL | ALL | 1.5L (RPO LFB) | ALL |

| | |
|-----------------------------------|--|
| Involved Region or Country | USA, Canada |
| Additional RPO/s: | N/A |
| Condition | Some customers may comment on a rough running engine with the Malfunction Indicator Lamp ON. Upon inspection, a technician may find DTC P0300 set along with a misfire and low compression in one or more cylinders. |
| Cause | This condition may be caused by a damaged piston. |

Correction

Repair the engine mechanical concern based on the results of the service procedure testing below.

Service Procedure

Perform Engine Compression Testing in SI.

If low compression is found, perform Cylinder Leakage Testing in SI and record the test results to isolate the concern.

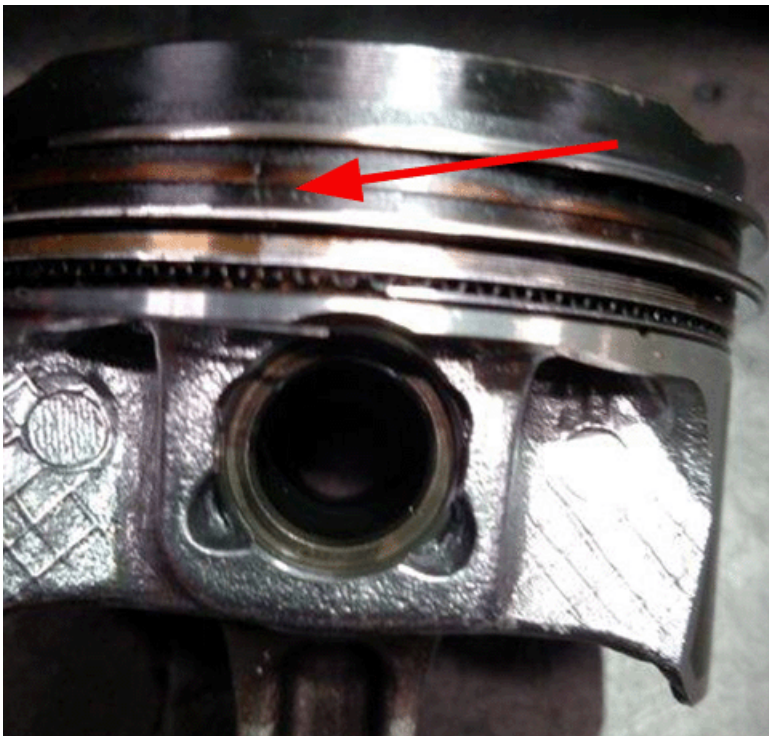
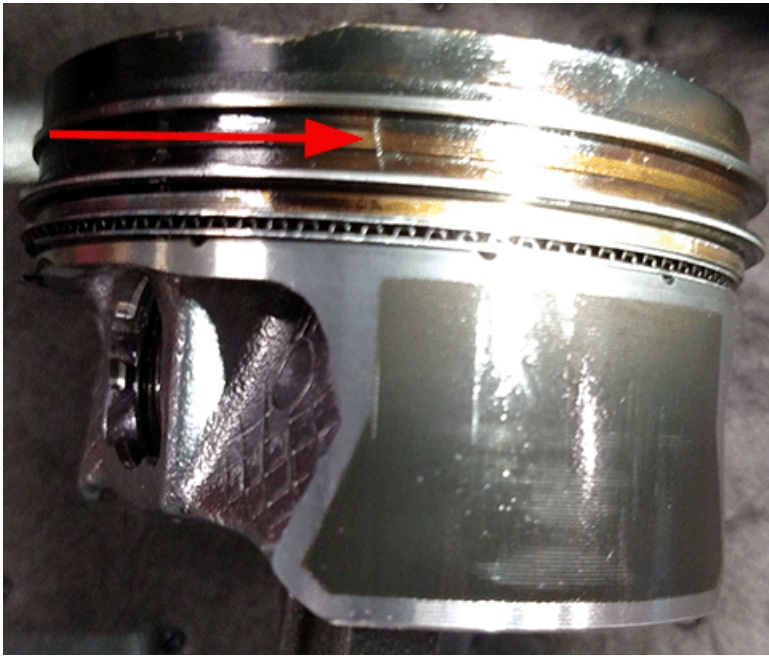
Note: (To isolate the source of cylinder leakage to a valve or cylinder sealing issue, it may be necessary to remove the intake and exhaust manifolds).

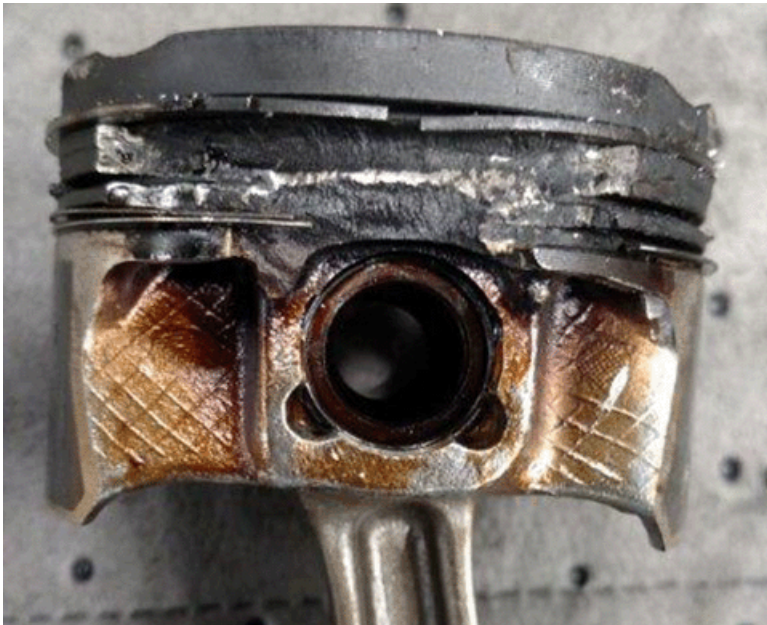
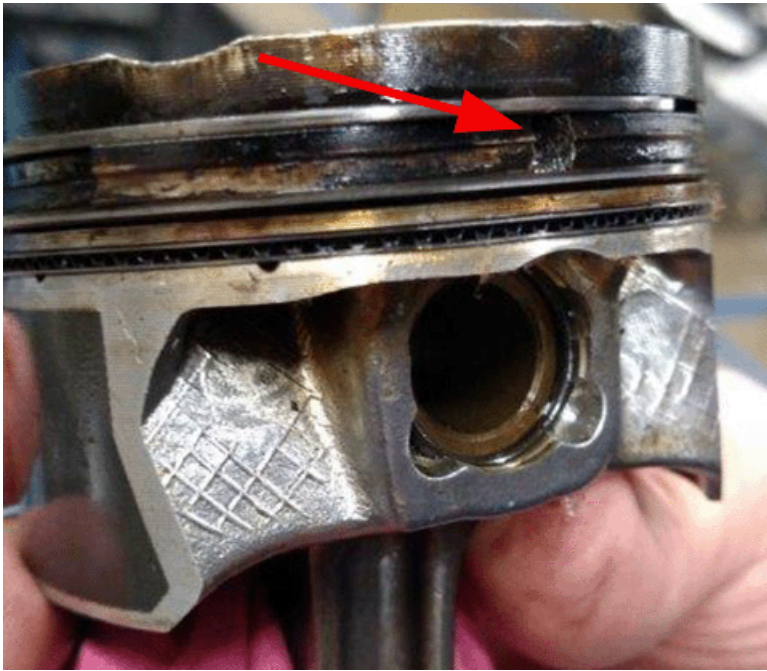
If excessive leakage to the crankcase is isolated, check piston and cylinder wall condition.

If the cylinder wall surface has not been compromised, replace the damaged piston.

Note: Do not replace pistons that do not show damage.

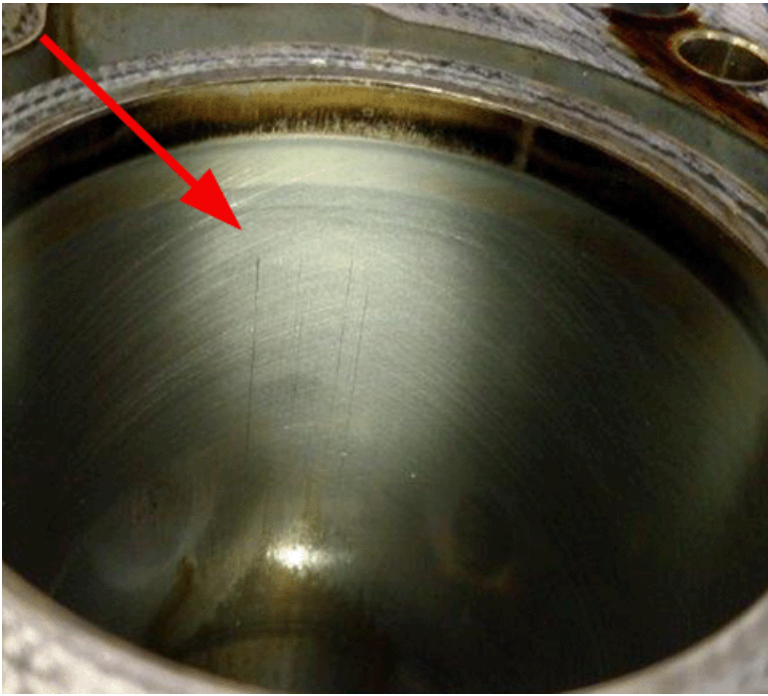
Shown below are examples of pistons with varying levels of damage.





Shown below are several examples of light vertical marks visible on the cylinder wall.

In these examples, none of the marks in the cylinder walls could be felt with the finger tip or nail and engine replacement is not recommended.

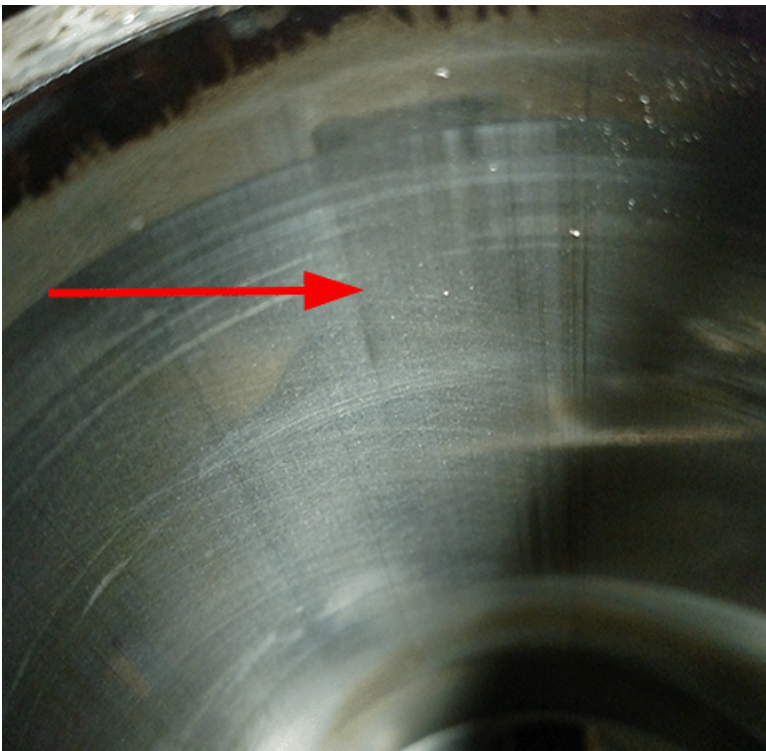




Shown below is an example of a damaged cylinder wall.

In this example the scuffing is wide and has removed the crosshatch from the cylinder wall in the area above the arrow.

This would result in oil consumption and requires engine replacement.



Warranty Information

| | Description | |
|--|-------------|--|
|--|-------------|--|

| | | |
|--|---|--|
| | <p>The correction for this concern may be one of several repairs described above. For vehicles repaired under warranty, please use the appropriate warranty labor operation based on the original cause in addition to well documented straight time.</p> | |
|--|---|--|

| | |
|-----------------|---------------------------------------|
| Version | 2 |
| Modified | 09/30/2016 Updated Service Procedure. |

GM bulletins are intended for use by professional technicians, NOT a "do-it-yourselfer". They are written to inform these technicians of conditions that may occur on some vehicles, or to provide information that could assist in the proper service of a vehicle. Properly trained technicians have the equipment, tools, safety instructions, and know-how to do a job properly and safely. If a condition is described, DO NOT assume that the bulletin applies to your vehicle, or that your vehicle will have that condition. See your GM dealer for information on whether your vehicle may benefit from the information.



WE SUPPORT VOLUNTARY TECHNICIAN CERTIFICATION