



INSTRUCTION TO SERVICE

ITS: 6215	
SECTION:	294 Power Cables
WRITTEN BY:	K. Baziuk
SUBJECT:	Clean Traction Motor Ground Connection

ITS6215

THIS DOCUMENT AND THE CONTENTS DISCUSSED HEREIN ARE THE CONFIDENTIAL AND PROPRIETARY INFORMATION OF NEW FLYER INDUSTRIES CANADA ULC AND NEW FLYER OF AMERICA INC. AND ARE DISCLOSED BY NEW FLYER IN CONFIDENCE. THIS DOCUMENT AND THE CONTENTS HEREIN ARE NOT TO BE DISCLOSED BY THE INTENDED RECIPIENT WITHOUT THE PRIOR WRITTEN AUTHORIZATION OF NEW FLYER. ANY UNAUTHOIZED DISCLOSURE, REPRODUCTION OR OTHER DISTRIBUTION OF THIS DOCUMENT OR INFORMATION IS STRICTLY PROHIBITED AND MAY RESULT IN ACTION BEING TAKEN AGAINST THE PARTY MAKING THE UNAUTHORIZED DISCLOSURE. THIS DOCUMENT AND ALL COPIES HEREOF MUST BE RETURNED TO NEW FLYER UPON REQUEST.

PROCEDURE:

1. Turn the main battery disconnect switch to the “OFF” position.
2. Locate the Cable Support Bracket mounted to the traction motor assembly. Refer to Figure 1.
3. Disconnect Traction Motor to Bracket Ground Cable, P/N: 586724 at the bracket end. Refer to Figure 2.
4. Clean connection point to bare metal.
5. Reconnect cable, torque wire connections on switch screw terminals to 13 ft-lbs (dry).

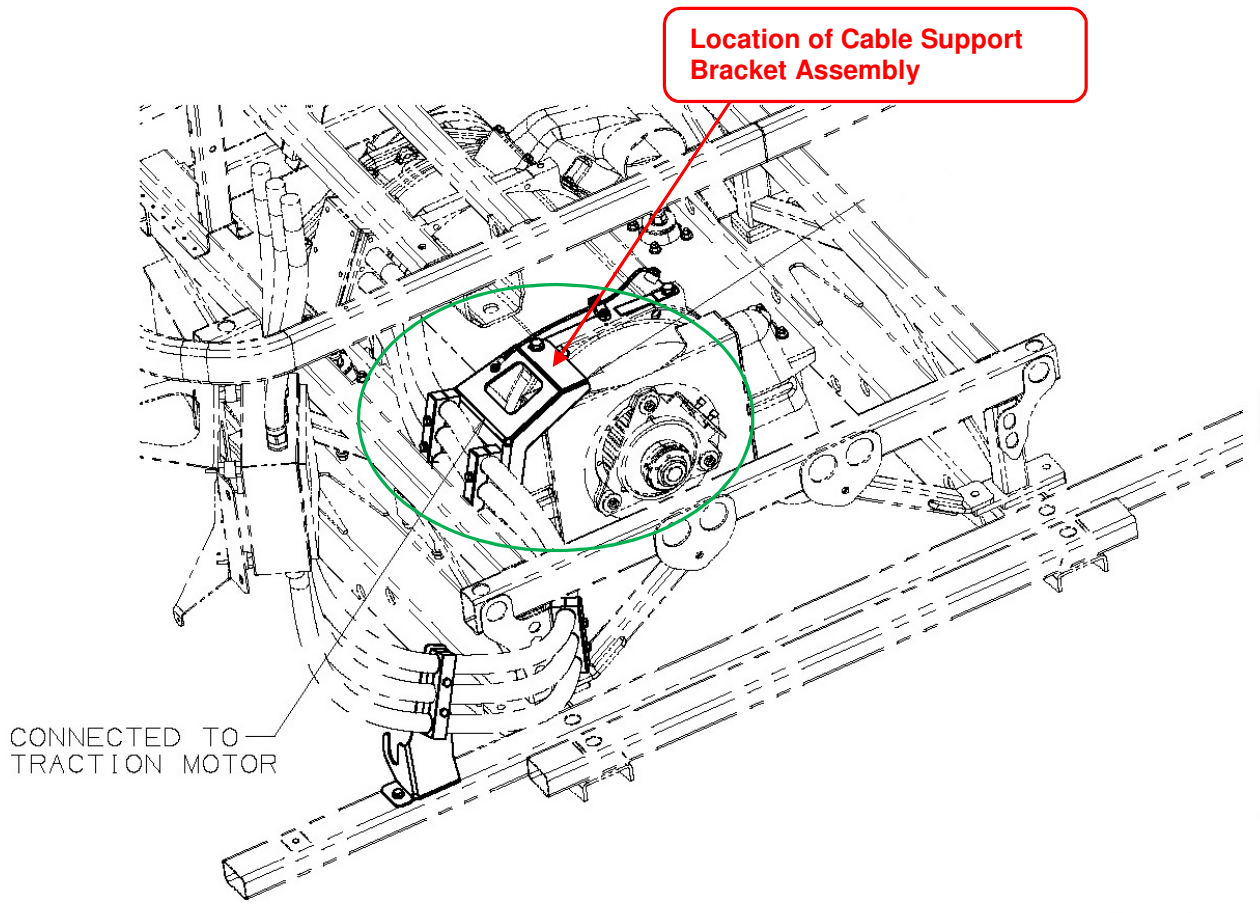


Figure 1: Location of Cable Support Bracket Assembly

6. Apply dielectric grease P/N: 8111767 to connection after torque.
7. Turn the main battery disconnect switch to the “ON” position.
8. Return to coach to service.

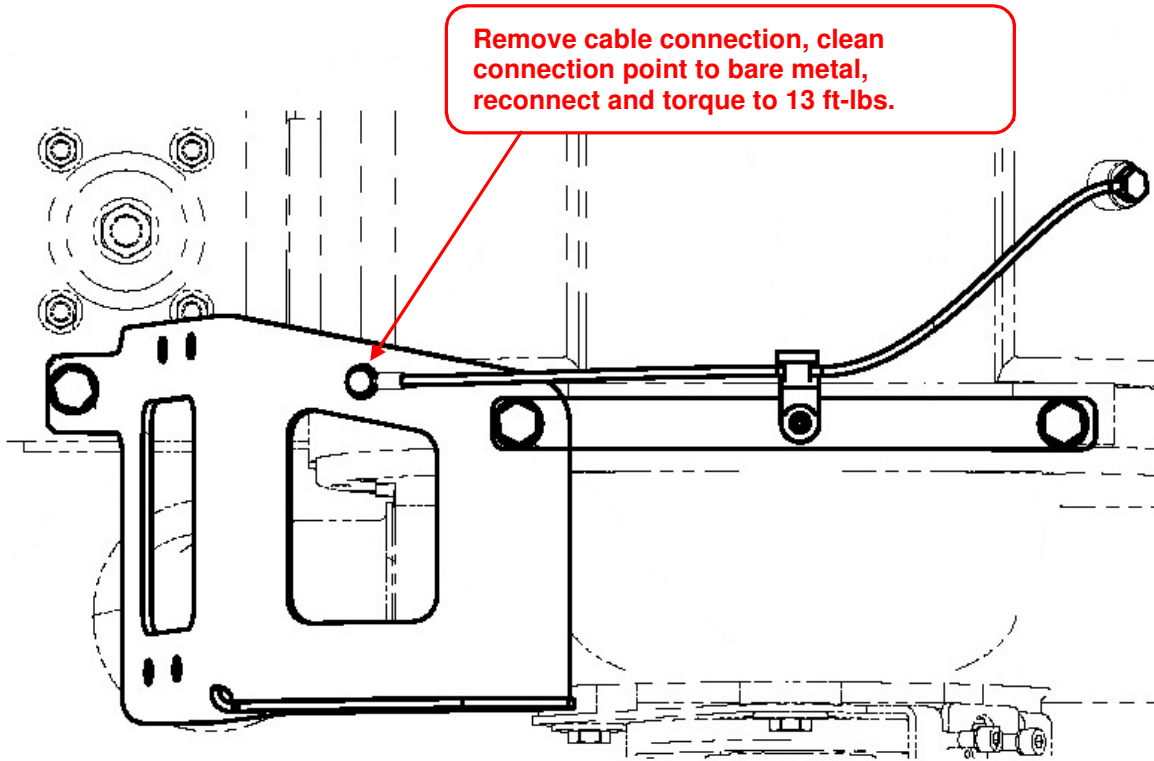


Figure 2: Traction Motor to Bracket Ground Cable, P/N: 586724



LABOUR ESTIMATE

	Operation	Men	Hours	Labour Time M X HR
1	Clean Traction Motor Ground Connection	1	0.25	0.25

PARTS KIT REQUIRED

Item	Part Number	Description	Qty. per Coach	Units	
				EA	

PARTS INCLUDED IN KIT.

Item	Part Number	Description	Qty. per Coach	Units	Notes
1	8111767	LUBRICANT NYK-77	0.01		Source Locally

SPECIAL TOOLS REQUIRED

Item	Part Number	Description	Qty. per Coach	Units	Notes
		NO SPECIAL TOOLS REQUIRED			