



INSTRUCTION TO SERVICE

ITS: 6353	
SECTION:	304 Paint & Decals
WRITTEN BY:	Troy Stutsky
SUBJECT:	R&R rear axle fluid type and specification tag

ITS6353

THIS DOCUMENT AND THE CONTENTS DISCUSSED HEREIN ARE THE CONFIDENTIAL AND PROPRIETARY INFORMATION OF NEW FLYER INDUSTRIES CANADA ULC AND NEW FLYER OF AMERICA INC. AND ARE DISCLOSED BY NEW FLYER IN CONFIDENCE. THIS DOCUMENT AND THE CONTENTS HEREIN ARE NOT TO BE DISCLOSED BY THE INTENDED RECIPIENT WITHOUT THE PRIOR WRITTEN AUTHORIZATION OF NEW FLYER. ANY UNAUTHOIZED DISCLOSURE, REPRODUCTION OR OTHER DISTRIBUTION OF THIS DOCUMENT OR INFORMATION IS STRICTLY PROHIBITED AND MAY RESULT IN ACTION BEING TAKEN AGAINST THE PARTY MAKING THE UNAUTHORIZED DISCLOSURE. THIS DOCUMENT AND ALL COPIES HEREOF MUST BE RETURNED TO NEW FLYER UPON REQUEST.

PROCEDURE:

1. Turn the main battery disconnect switch to the "OFF" position.
2. If necessary, raise coach in accordance with the New Flyer Service Manual.
3. Locate the existing rear axle fluid type and specification tag. See Figure 1.

STREET - SIDE

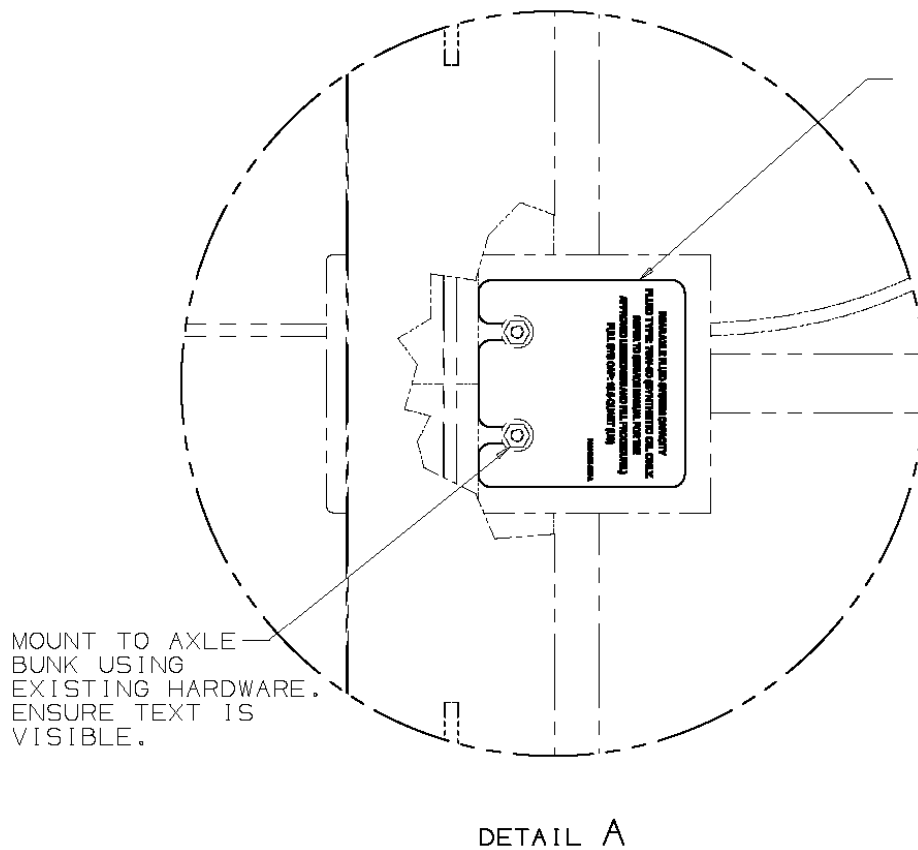
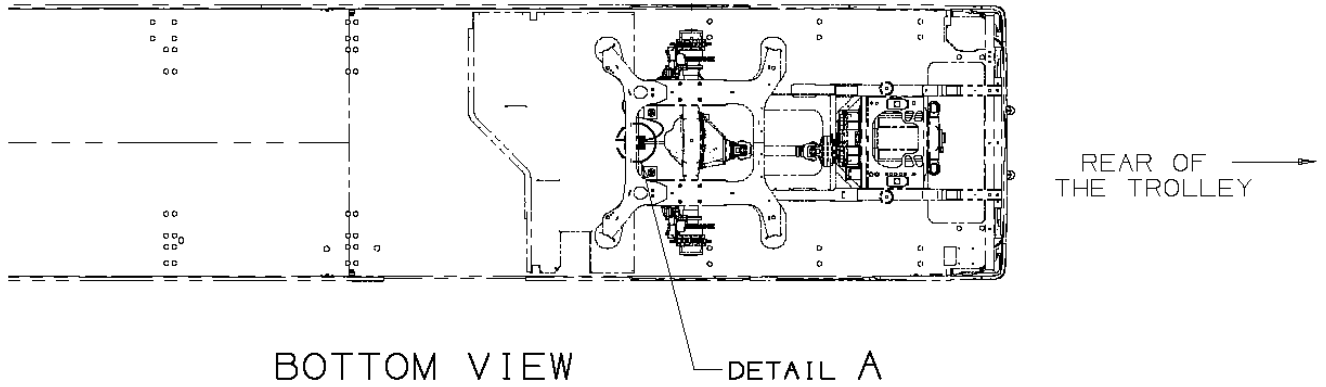


Figure 1: Location of rear axle fluid type and specification tag



NEW FLYER

4. Remove and discard the existing tag from the bus.
5. Replace it with the new rear axle fluid type and specification tag (NF PN 646651).
6. If necessary, lower coach in accordance with the New Flyer Service Manual.
7. Remove all tools and debris and return the bus to service condition.
8. Turn the main battery disconnect switch to the “ON” position.



NEW FLYER

LABOUR ESTIMATE

	Operation	Men	Hours	Labour Time M X HR
1	R&R rear axle fluid type and specification tag	1	0.25	0.25

PARTS REQUIRED

Item	Part Number	Description	Qty. per Coach	Units	Notes
1	646651	TAG-REAR AXLE FLUID CAPACITY	1	EA	