



## INSTRUCTION TO SERVICE

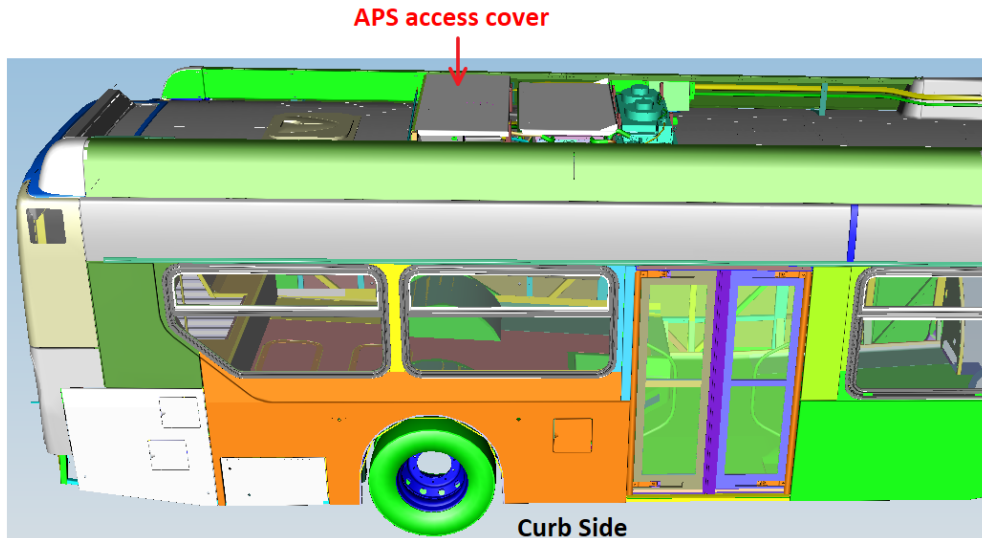
ITS: 6410	
<b>SECTION:</b>	294 Power Cables
<b>WRITTEN BY:</b>	Talha Wasif
<b>SUBJECT:</b>	Install closeout plate to seal hole in HV junction box

# ITS6410

THIS DOCUMENT AND THE CONTENTS DISCUSSED HEREIN ARE THE CONFIDENTIAL AND PROPRIETARY INFORMATION OF NEW FLYER INDUSTRIES CANADA ULC AND NEW FLYER OF AMERICA INC. AND ARE DISCLOSED BY NEW FLYER IN CONFIDENCE. THIS DOCUMENT AND THE CONTENTS HEREIN ARE NOT TO BE DISCLOSED BY THE INTENDED RECIPIENT WITHOUT THE PRIOR WRITTEN AUTHORIZATION OF NEW FLYER. ANY UNAUTHOIZED DISCLOSURE, REPRODUCTION OR OTHER DISTRIBUTION OF THIS DOCUMENT OR INFORMATION IS STRICTLY PROHIBITED AND MAY RESULT IN ACTION BEING TAKEN AGAINST THE PARTY MAKING THE UNAUTHORIZED DISCLOSURE. THIS DOCUMENT AND ALL COPIES HEREOF MUST BE RETURNED TO NEW FLYER UPON REQUEST.

**PROCEDURE:**

1. Turn the main battery disconnect switch to the “OFF” position.



**Figure 1: APS Location**

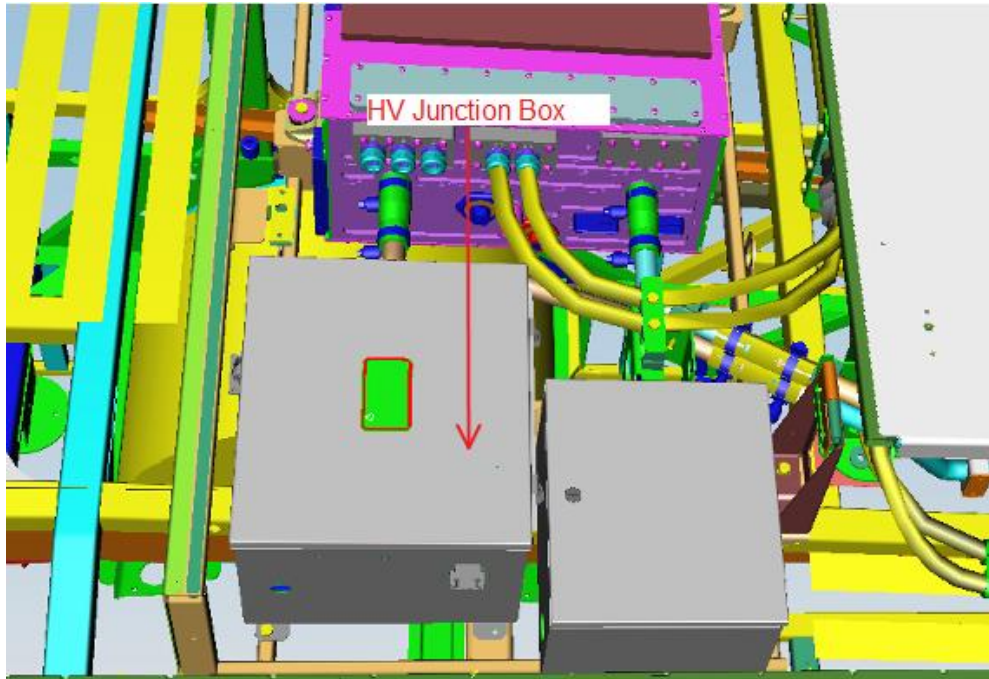
2. Locate the APS access cover as shown in Figure 1.



**The BAE System uses potentially hazardous electrical energy. There is a risk of electric shock. Only trained service personnel should access components of the hybrid drive system. Failure to observe all high voltage electrical safety precautions may result in personal injury and/or death.**

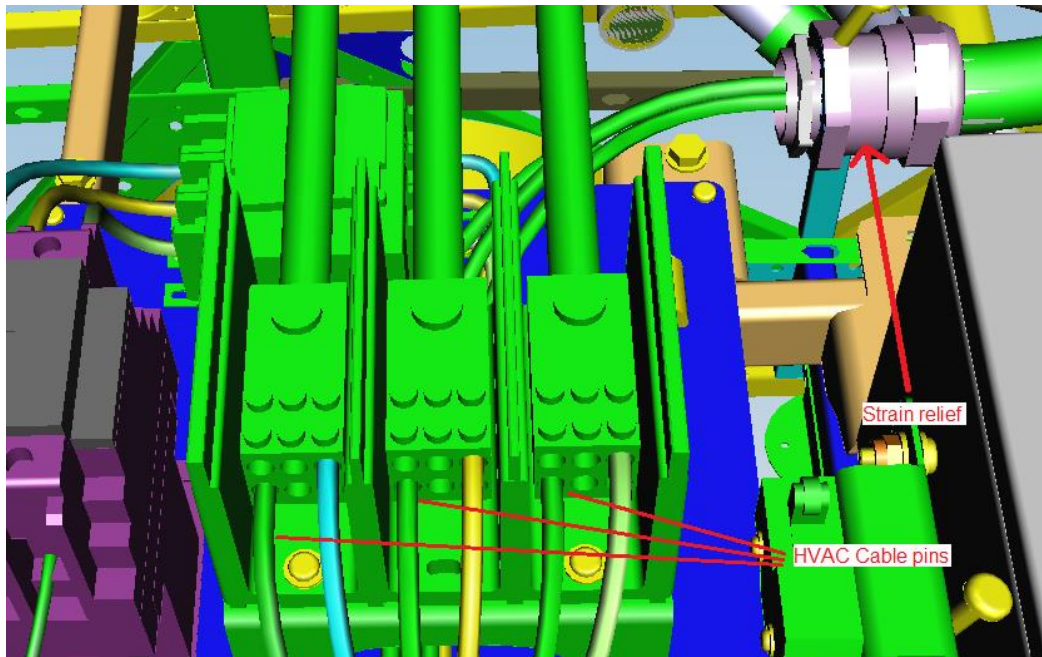
**While servicing the vehicle, remove jewelry, wear safety glasses and safety shoes. Wear linesman's high voltage gloves (rated at 1000 VDC minimum) when working in or around the traction motor, generator or battery enclosures/energy storage systems.**

3. Gain access to the HV Junction box (shown in Figure 2) by opening the access cover. See section 5 of the Service Manual for information regarding high voltage safety.



**Figure 2: HV junction box location**

4. Remove the pins of the BAE HV HVAC Cable (P/N: 560952) and remove the cable from the HV box. See Figure 3 for reference.



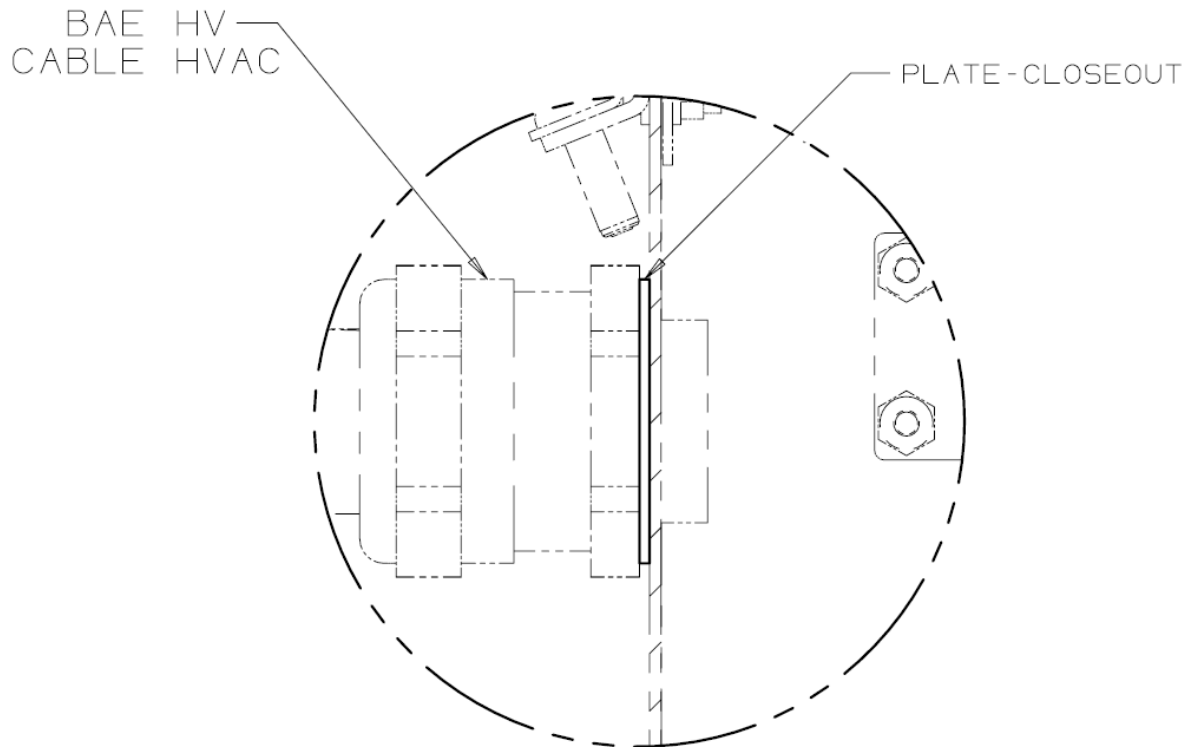
**Figure 3: BAE HV HVAC cable entering the HV Junction**

5. Add the Plate-Closeout (P/N: 651979) to the end of the strain relief.



**NEW FLYER**

6. Apply Sika 221 adhesive between the plate and the outside of the HV box and then re-install the strain relief and tighten the nut. See Figure 4 for reference.



**Figure 4: BAE HV HVAC cable entering the HV Junction with Plate-Closeout installed**

7. Reconnect the pins of BAE HV HVAC cable as shown in Figure 3. Ensure that the Black cable is connected to Phase D, Red to Phase E and White to Phase F.
8. Close the HV box and the APS access cover. Remove all tools and debris and return the bus to service condition.
9. Turn the main battery disconnect switch to the "ON" position.

**⚠ WARNING: DO NOT perform any maintenance on roof-mounted components unless equipment is in place to prevent fall hazards. Ensure maintenance personnel use approved lift platforms or scaffolding and wear approved safety harness when working on the roof of the vehicle.**



**NEW FLYER**

### LABOUR ESTIMATE

	Operation	Men	Hours	Labour Time M X HR
1	Install closeout plate to seal hole in HV junction box	1	1.0	1.0

### PARTS REQUIRED

Item	Part Number	Description	Qty. per Coach	Units	Notes
1	651979	PLATE-CLOSEOUT	1	EA	