

Content

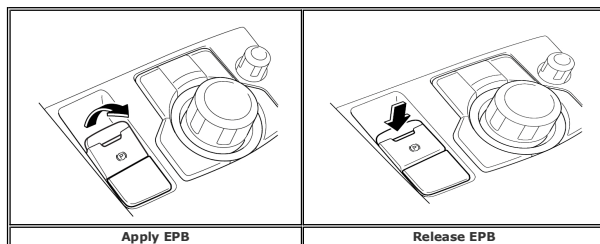
2016 MAZDA6, 2016 CX-5 - ELECTRIC PARKING BRAKE (EPB) SERVICE CAUTION

When performing service on the Electric Parking Brake (EPB) system, be aware that some EPB parts require unique removal/replacement procedures. If the vehicle is delivered to the customer with incomplete EPB service, the customer may experience improper operation of the EPB system.

Part	Model	Workshop Manual Procedure	Note
Rear Brake Pad	Mazda6	<u>DISC PAD (REAR) REPLACEMENT</u>	Maintenance Mode is required before and after service.
Rear Brake Pad	CX-5	<u>DISC PAD (REAR) REPLACEMENT</u>	Maintenance Mode is required before and after service.
Rear Brake Disc Plate	Mazda6	<u>REAR BRAKE (DISC) REMOVAL/INSTALLATION</u>	Maintenance Mode is required before and after service.
Rear Brake Disc Plate	CX-5	<u>REAR BRAKE (DISC) REMOVAL/INSTALLATION</u>	Maintenance Mode is required before and after service.
Rear Brake Caliper	Mazda6	<u>REAR BRAKE (DISC) REMOVAL/INSTALLATION</u>	Maintenance Mode is required before and after service.
Rear Brake Caliper	CX-5	<u>REAR BRAKE (DISC) REMOVAL/INSTALLATION</u>	Maintenance Mode is required before and after service.
EPB Control Module	Mazda6	<u>ELECTRIC PARKING BRAKE CONTROL MODULE REMOVAL</u> <u>ELECTRIC PARKING BRAKE CONTROL MODULE INSTALLATION</u>	<ul style="list-style-type: none"> • New shock absorbing material and spacers are required if EPB Control Module is replaced. • EPB SWITCH OPERATION is required after service.
EPB Control Module	CX-5	<u>ELECTRIC PARKING BRAKE CONTROL MODULE REMOVAL/INSTALLATION</u>	<ul style="list-style-type: none"> • New shock absorbing material and spacers are required if EPB Control Module is replaced. • EPB SWITCH OPERATION is required after service.
EPB Motor Gear Unit	Mazda6	<u>ELECTRIC PARKING BRAKE MOTOR GEAR UNIT REMOVAL/INSTALLATION</u>	EPB SWITCH OPERATION is required after service.
EPB Motor Gear Unit	CX-5	<u>ELECTRIC PARKING BRAKE MOTOR GEAR UNIT REMOVAL/INSTALLATION</u>	EPB SWITCH OPERATION is required after service.

EPB SWITCH OPERATION

When the electric parking brake is operated/released, the electric parking brake control module performs automatic adjustment of the EPB and diagnosis of EPB system.



NOTE: If any warning light is on after operating the EPB switch, refer to Workshop Manual troubleshooting.