



2017 Lancer

TECH TALK

Volume 222 - July, 2016

In This Issue

- Vehicle Technical Info page 1
- MEDIC Information page 5
- New MUT-III SE Scan Tool Software page 5
- Training News page 14
- Techline Information page 15
- Bulletin Review page 15

Vehicle Technical Info

NOTE: The ✓ mark indicates an article is being repeated from a previous issue of Tech Talk due to the subject's importance.

GROUP 00 – General

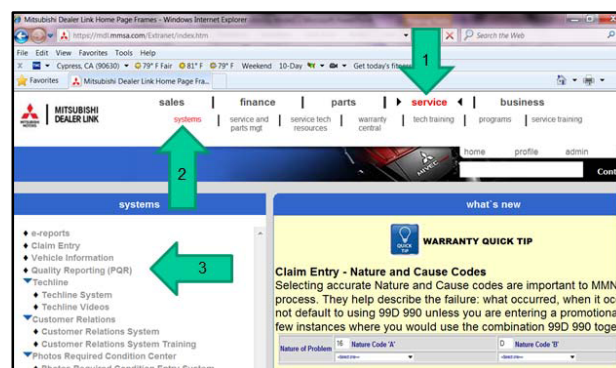
SUBMISSION OF PRODUCT QUALITY REPORTS — All Models.

The Product Support Group has a need to obtain a clear understanding of the current technical field issues. This is critical in order to obtain field information more quickly for countermeasures for customer complaint vehicles and quickly resolve our customer vehicles issues, which impact CSI. Dealers, along with DPSMs, are encouraged to submit Product Quality Reports in MDL regarding incidents which have occurred multiple times in your district and/or customer complaint issues. When completing a report:

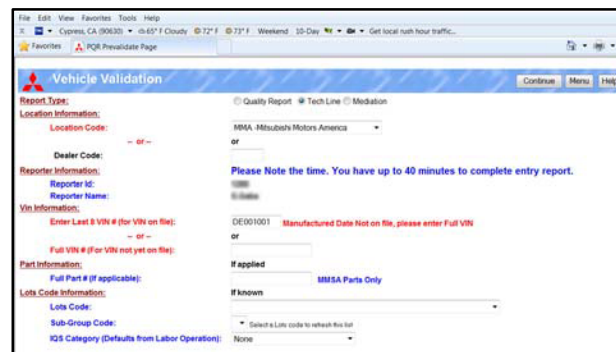
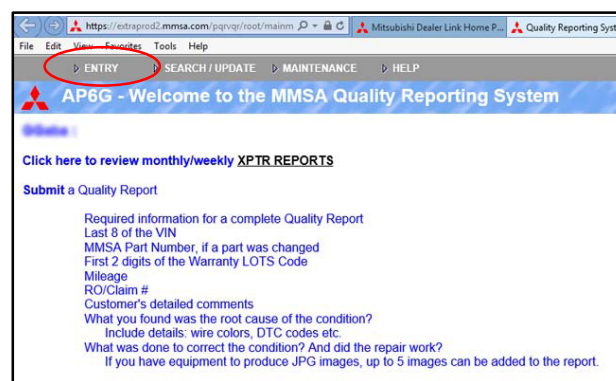
- 1) Supply only observed technical conditions, do not include any opinions or conclusions concerning the event.
- 2) Upload multiple photos to help clearly identify the issue (maximum 5 files for each PQR report, maximum file size 5 MB per file).
- 3) Retain parts per Mitsubishi warranty policy.

The Product Support Group will review the submitted PQRs and additional study will be performed to determine root cause and next steps. A response will be issued under the Manufacturer's Responses/Comments section of the PQR.

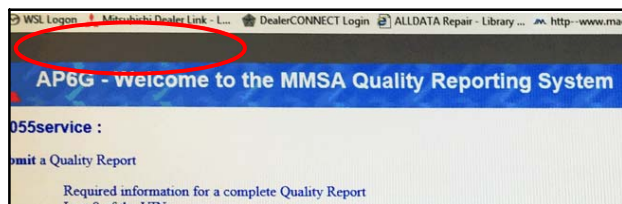
To access PQR from MDL, click on service → systems → Quality Reporting (PQR).



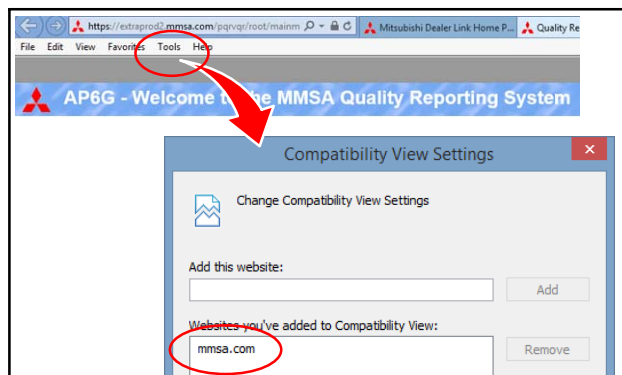
Click the "Entry" button to begin a new report.



NOTE: If the “Entry” button is not visible at the top of the screen, you may need to add “mmsa.com” to the list of trusted sites on your PC.



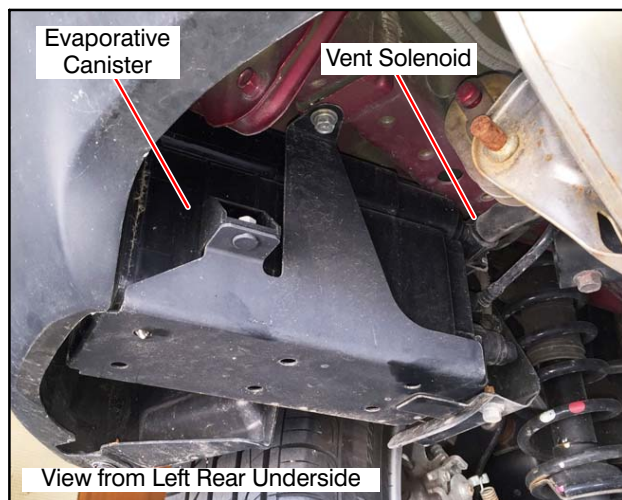
Click on “Tools” and select Compatibility View Settings. Type in “mmsa.com” under “Add this website” and click “Add.”



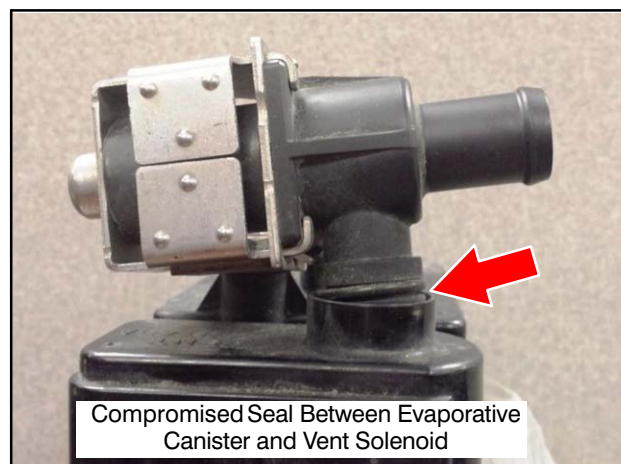
GROUP 13 – Fuel and GROUP 17 – Engine and Emission Control

EVAPORATIVE EMISSION CONTROL SYSTEM LEAK DUE TO VENT SOLENOID BRACKET BENT; DTCs P0442/P0455/P0456 — 2013–15 Outlander Sport/RVR.

The vent solenoid bracket attached to the evaporative canister may be susceptible to bending, particularly if the vehicle is impacted or backed into an object at the left rear corner. An impact to the left rear corner of the vehicle can force the canister to move and cause the vent solenoid bracket to become bent.



When diagnosing evaporative emission DTCs for leak concerns perform a visual inspection of the sealing surface for the vent solenoid to the evaporative canister. If the vent solenoid bracket is bent it can cause the vent solenoid to not properly seal to the canister.



If this condition is found, please attempt to remove and straighten the vent solenoid bracket to correct the sealing concern. In most cases the evaporative canister does not need to be replaced for this condition.

Using the MUT-3 you can force the monitor to run and determine if the repair was effective. Damage to the vehicle due to an outside impact should not be covered under warranty.

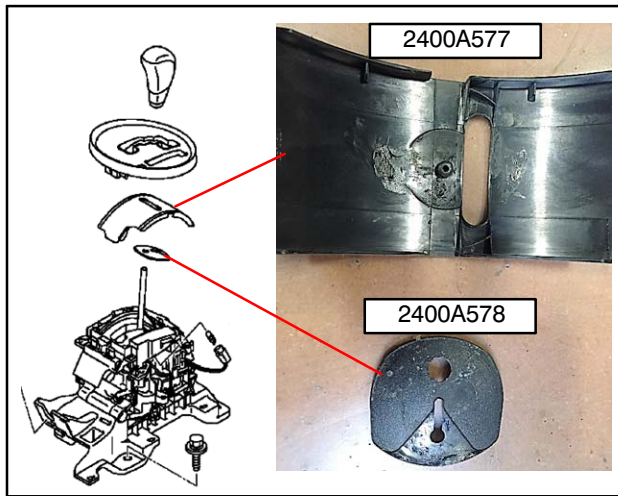


GROUP 23 – Automatic Transmission

SHIFT LEVER DIFFICULT TO MOVE — 2013–15 Outlander Sport/RVR.

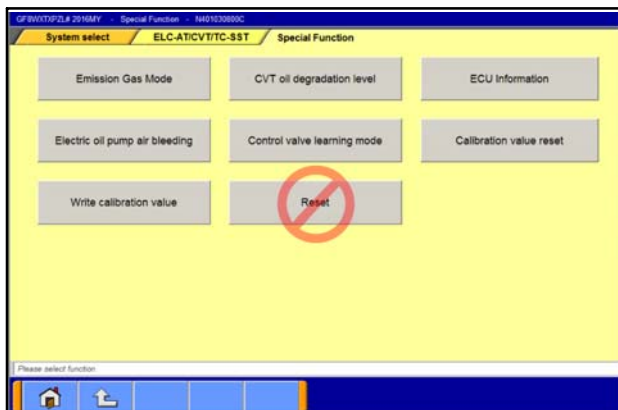
If the shift sliders become contaminated or damaged it can cause the shift lever to become difficult to move. It is no longer necessary to replace the complete shift lever assembly if the repair can be completed with replacement of the gearshift lever cover (P/N 2400A577) and A/T

shift indicator slider (P/N 2400A578). These parts are available as service parts. Be sure to engage the slider into the lever cover pin.



RESET BUTTON ERASES TCM PROGRAMMING (CVT8) — 2015-17 Outlander Sport/RVR (2.0L engine), 2016-17 Outlander (2.4L engine), All 2016-17 Lancer.

When diagnosing or servicing vehicles equipped with a CVT8 transmission, do NOT push the RESET button on the Special Function page of ELC-AT/CVT/TC-SST system in MUT-III. **This WILL erase programming in the TCM.**



If this button is pushed in error, the gear indication on the MID will be blank and the vehicle will be locked in Park. If this happens, follow the steps in TSB-15-23-001 to resolve the issue.

GROUP 42A – Body

HEADLAMP LENS CRACKING OR SPIDER WEBBING APPEARANCE — All models with composite headlamp lenses.

Use of harsh chemicals to clean headlamp lenses may lead to a “spider webbing” or “cracking” appearance. Chemicals used in products such as (but not limited to) tar and road oil remover, tire cleaners and rubbing compounds may cause damage to lenses. Dealers should inspect lenses closely before replacing them. On the headlamp in the photo, a residue trail can be seen running down the lower portion of the lens and collecting at the bottom of the assembly. Damage to lenses due to harsh chemicals being used on the surface should NOT be covered under warranty.



GROUP 52A – Interior

OUTER REAR SEAT BELT TONGUE SLIDES DOWN SEAT BELT — 2013-15 Outlander Sport/RVR.

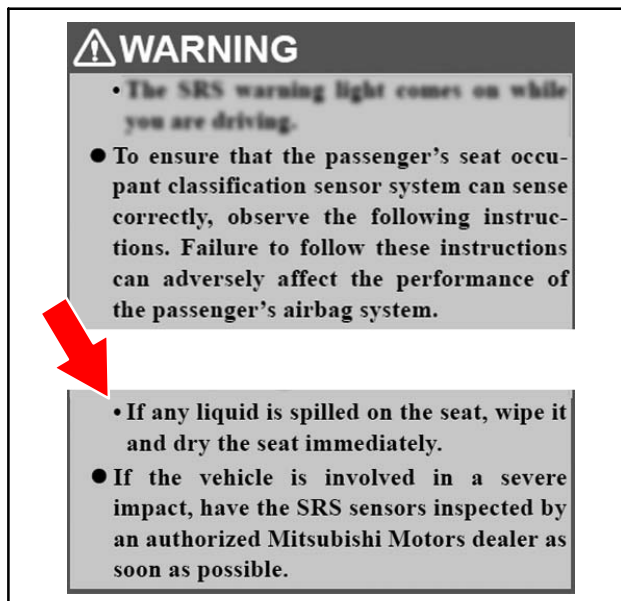
If the outer rear seat belt tongue is able to slide down the seat belt without hindrance, it can cause interference between the seat cushion and interior trim. Installation of a rear seat belt stopper button (P/N 7000A360) can correct this condition. Please reference TSB-13-52A-001 for more information.

GROUP 52B – Supplemental Restraint System

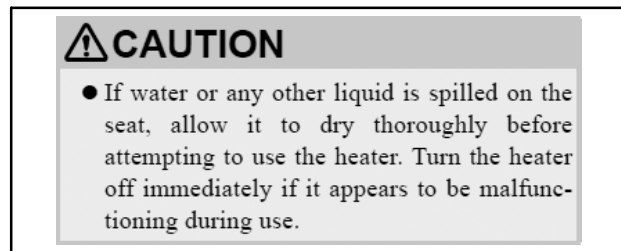
DTC B1691 & B1558 FOUND IN SRS ECU AND OCM ECU MEMORY — 2012–16 i-MiEV, 2014–17 Mirage, 2017 Mirage G4, 2014–16 Outlander.

The subject DTCs are set when the Occupant Classification Module (OCM) communicates a fault to the SRS ECU. If you find B1558 (“OCM [Occupant Classification ECU] DTC Present”) in SRS ECU memory and B1691 (“Occupant Sensing Antenna”) in OCM ECU memory, check the front passenger seat for signs of water or liquid spillage. If not easily detected, question the customer if any liquids were spilled on the front passenger seat. These DTCs set as an intended function of design to detect water intrusion.

DO NOT replace the front passenger seat bottom assembly for these DTCs. Dry the front passenger seat (if wet) and clear the DTCs to address the concern. The Owner’s Manual (Seat & Restraint Systems/SRS section) contains a warning message which advises the owner to wipe and dry the seat immediately if liquid is spilled.



Additionally, the Owner’s Manual cautions to turn off the seat heater in the event of liquid spilling on the seat.



GROUP 54 – Chassis Electrical

✓ **FUSE HANDS FREE LINK SYSTEM: SOFTWARE UPDATE** — 2012–16 i-MiEV, 2011–15 Lancer, 2011–15 Lancer Ralliart, 2011–14 Lancer Sportback, 2011 Lancer Sportback Ralliart, 2011–15 Lancer Evolution, 2014–15 Mirage (ES, Non Navi), 2010–16 Outlander, 2011–16 Outlander Sport/RVR.

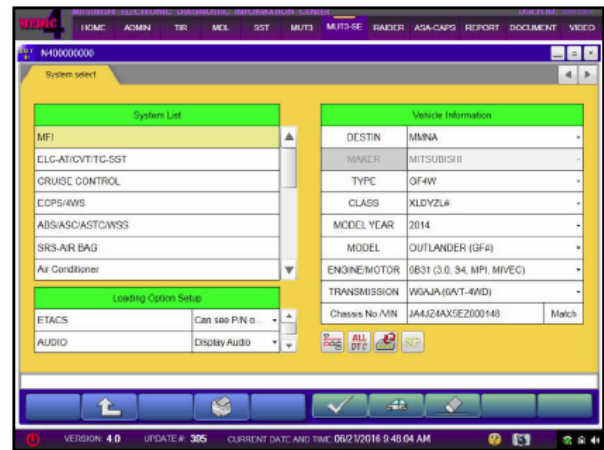
A software update is available to address multiple FUSE issues including unstable connectivity and issues with music playing via the USB connection. Please refer to TSB-16-54-001 for details and instructions on how to update the Hands Free Module (HFM) software. DO NOT replace the HFM before attempting to address these concerns with the software update. Remember, a JCI case number is required for HFM replacement.



<h1>MEDIC Information</h1> <p>MEDIC Hotline (800) 846-7575</p>	 <p>HOURS OF OPERATION: Monday — Friday 7:00 am – 4:00 pm Pacific Time</p> <p>MEDIC Hotline will assist with MEDIC & Scan Tool hardware or software issues.</p>
---	---

NEW MUT-III SE SCAN TOOL SOFTWARE

Mitsubishi will launch our latest scan tool software version, MUT-III SE (Second Edition) on August 1, 2016. SE provides many advantages over MUT-III – including automatic VIN reading and faster processing speed – increasing your technician efficiency! SE is included on your MEDIC4 computer (Toughbook® or Toughpad®) on its own tab and used to diagnose certain past and present as well as all future vehicle systems.



The majority of diagnosis will now be conducted using MUT-III SE with full software implementation expected in the near future.

- The RAIDER scan tool remains unchanged and accessed on its own tab in MEDIC4.
- ECU Reprogramming continues to be performed with MUT-III for the foreseeable future.
- Oscilloscope and multi-meter functions are still supported with MUT-III and the VCI.

Refer to the attached documents which illustrate unique circumstances where MUT-III will be used instead of MUT-III SE. To provide your technicians ready access to this information in a format suitable for the shop environment, laminated copies of the usage and PS charts have been mailed to the dealership service manager.

MUT-III SE will assist your dealership in fulfilling our “Customer First” philosophy and enable your technicians to fix customer vehicles right the first time and on time.

MUT–III and VCI Usage Chart

VEHICLE	PLATFORM	LAUNCH	END	MUT-III Version
3000GT	R24	1990	1999	MUT-III + VCI-Lite
3000GT SPYDER	R28	1995	1996	(A/C, SRS, Cruise Control need VCI)
DIAMANTE	J42	1989	1996	MUT-III + VCI
	YR42	1996	2004	MUT-III + VCI-Lite (A/C, SRS, Cruise Control, SWS need VCI)
DIAMANTE WAGON	J45	1993	1995	MUT-III + VCI
ECLIPSE	H24	1988	1994	MUT-III + VCI
	F24S	1994	1999	MUT-III + VCI-Lite (SRS, Cruise Control need VCI)
	F28	1994	1998	MUT-III + VCI-Lite (SRS, Cruise Control need VCI)
	ST24S / ST28	1999	2005	MUT-III + VCI-Lite (SRS, Cruise Control, SWS need VCI)
	PS24S / PS28 * (see PS chart)	2005	2012	MUT-III + VCI-Lite (SWS need VCI) and MUT-III-SE + VCI-Lite
ENDEAVOR	PSU * (see PS chart)	2003	2011	MUT-III + VCI-Lite (SWS need VCI) and MUT-III-SE + VCI-Lite
EXPO	CZL	1991	1996	MUT-III + VCI
EXPO-LRV	CZ	1991	1994	MUT-III + VCI
GALANT	YF41	1983	1987	MUT not supported
	H41	1988	1993	MUT-III + VCI
	F41	1993	1998	MUT-III + VCI-Lite (SRS, Cruise Control need VCI)
	ST41	1998	2003	MUT-III + VCI-Lite (SRS, Cruise Control, SWS need VCI)
	PS41 * (see PS chart)	2003	2012	MUT-III + VCI-Lite (SWS need VCI) and MUT-III-SE + VCI-Lite
GALANT-SIGMA	YF42	1987	1990	MUT not supported
I-MIEV	TQ-MIEV	2012	CURRENT	MUT-III-SE + VCI-Lite
LANCER	JT41	2001	2006	MUT-III + VCI-Lite (Cruise Control, SWS need VCI)
	GS41	2007	CURRENT	MUT-III-SE + VCI-Lite
LANCER EVO.	JTEVO	2001	2005	MUT-III + VCI-Lite (Cruise Control, SWS need VCI)
	JTEVO	2005	2006	MUT-III + VCI-Lite (Cruise Control, SWS need VCI)
	GSEVO	2007	CURRENT	MUT-III-SE + VCI-Lite
LANCER SPORTBACK	JT45	2003	2004	MUT-III + VCI-Lite (Cruise Control, SWS need VCI)
	GS44S	2009	CURRENT	MUT-III-SE + VCI-Lite
MIRAGE	LA	1983	1988	MUT not supported
	C41D	1991	1992	MUT-III + VCI
	C2441	1988	1992	MUT-III + VCI
	E2141	1992	1996	MUT-III + VCI
	MG21	1996	2002	MUT-III + VCI-Lite (SRS, Cruise Control need VCI)
	MG41	1996	2002	MUT-III + VCI-Lite (SRS, Cruise Control need VCI)
	EL and ELL	2014	CURRENT	MUT-III-SE + VCI-Lite
MIGHTY MAX	SH27	1988	1995	MUT-III + VCI
MONTERO	SJ	1983	1991	MUT not supported
	Q45	1991	1999	MUT-III + VCI-Lite (SRS, Cruise Control need VCI)
	CK45	2000	2002	MUT-III + VCI-Lite (A/C, Cruise Control, SWS need VCI)
MONTERO SPORT	P45	1996	2004	MUT-III + VCI or VCI-Lite (SRS, Cruise Control, SWS need VCI)
OUTLANDER	NQZ	2002	2006	MUT-III + VCI-Lite (A/C, Cruise Control, SWS need VCI)
	GS45X	2007	2013	MUT-III-SE + VCI-Lite
	RE45	2014	CURRENT	MUT-III-SE + VCI-Lite
OUTLANDER SPORT	ZC45X	2011	CURRENT	MUT-III-SE + VCI-Lite
PRECIS	PRX3	1989	1994	MUT not supported
RAIDER	NM	2005	2009	RAIDER + VCI-Lite
STARION	YDC	1983	1989	MUT not supported
TREDIA/CORDIA	NF41	1983	1987	MUT not supported
TRUCK	SP	1983	1986	MUT not supported
	PB	1986	1996	MUT not supported
VAN-WAGON	DE	1986	1990	MUT not supported

Specific PS Vehicles, MY, and System Requiring MUT—III

Vehicle	MY	System
ENDEAVOR	2006	MF1
ENDEAVOR	2006	IMMOBILIZER
ENDEAVOR	2006	ELC-AT/CVT/TC-SST
ENDEAVOR	2006	TCL/STABILITY CONTROL
ENDEAVOR	2006	CRUISE CONTROL
ENDEAVOR	2006	ABS/ASC/ASTC/WSS
ENDEAVOR	2006	SRS-AIR BAG
ENDEAVOR	2006	Air Conditioner
ENDEAVOR	2006	SWS
ENDEAVOR	2006	ETACS
ENDEAVOR	2006	TPMS
ENDEAVOR	2006	Meter
ENDEAVOR	2006	Display
ENDEAVOR	2006	Steering Angle Sensor
ENDEAVOR	2007	TCL/STABILITY CONTROL
ENDEAVOR	2007	ABS/ASC/ASTC/WSS
ENDEAVOR	2007	Air Conditioner
ENDEAVOR	2007	SWS
ENDEAVOR	2007	Display
ENDEAVOR	2007	Steering Angle Sensor
ENDEAVOR	2008	TCL/STABILITY CONTROL
ENDEAVOR	2008	ABS/ASC/ASTC/WSS
ENDEAVOR	2008	Air Conditioner
ENDEAVOR	2008	SWS
ENDEAVOR	2008	Display
ENDEAVOR	2008	Steering Angle Sensor
ENDEAVOR	2009	TCL/STABILITY CONTROL
ENDEAVOR	2009	ABS/ASC/ASTC/WSS
ENDEAVOR	2009	Air Conditioner
ENDEAVOR	2009	SWS
ENDEAVOR	2009	Display
ENDEAVOR	2009	Steering Angle Sensor
ENDEAVOR	2010	ABS/ASC/ASTC/WSS
ENDEAVOR	2010	Air Conditioner
ENDEAVOR	2010	SWS
ENDEAVOR	2010	Display
ENDEAVOR	2010	Steering Angle Sensor
ENDEAVOR	2011	ABS/ASC/ASTC/WSS
ENDEAVOR	2011	Air Conditioner
ENDEAVOR	2011	SWS
ENDEAVOR	2011	Display
ENDEAVOR	2011	Steering Angle Sensor

Vehicle	MY	System
GALANT	2006	SWS
GALANT	2006	TPMS
GALANT	2007	SWS
GALANT	2007	Display
GALANT	2008	SWS
GALANT	2008	Display
GALANT	2009	SWS
GALANT	2009	Display
GALANT	2010	SWS
GALANT	2010	Display
GALANT	2010	Steering Angle Sensor
GALANT	2011	SWS
GALANT	2011	Display
GALANT	2011	Steering Angle Sensor
GALANT	2012	SWS
GALANT	2012	Display
GALANT	2012	Steering Angle Sensor

Vehicle	MY	System
ECLIPSE	2006	SWS
ECLIPSE & SPYDER	2007	SWS
ECLIPSE & SPYDER	2008	SWS
ECLIPSE & SPYDER	2008	Steering Angle Sensor
ECLIPSE & SPYDER	2009	SWS
ECLIPSE & SPYDER	2009	Steering Angle Sensor
ECLIPSE & SPYDER	2010	SWS
ECLIPSE & SPYDER	2010	Steering Angle Sensor
ECLIPSE & SPYDER	2011	SWS
ECLIPSE & SPYDER	2011	Steering Angle Sensor
ECLIPSE & SPYDER	2012	SWS
ECLIPSE & SPYDER	2012	Steering Angle Sensor

Questions and Answers

Q: How do I start MUT-III SE?

A: Confirm neither MUT-III nor RAIDER scan tools are running. Touch the MUT3-SE tab in MEDIC4 to start MUT-III SE.

Q: After I exit MUT-III SE, a blank screen remains displayed. What do I do now?

A: Touch the MEDIC4 HOME tab to continue. Once the HOME screen is displayed, any MEDIC4 function can be selected.

Q: After I exit MUT-III, how long does it take before I see the MEDIC4 HOME screen?

A: Wait for the MEDIC4 HOME screen to automatically display in about 30 seconds.

Q: When I open a diagnosis function within MUT-III SE, it displays that function on a new tab. Can I switch between these tabs at will?

A: Yes

Q: I remember a Job Aid was available for MUT-III to remind me of icon/button functions. Is there a similar Job Aid for MUT-III SE?

A: No, but if the mouse cursor is hovered over the icon/button, a screen tip is displayed with its definition. If a mouse is not connected to the Toughpad®, press and hold the icon/button until the screen tip is displayed then slide your finger away from the icon without removing your finger from the screen. Doing this prevents activating the function when only the definition is desired.

Q: How will I know which systems cannot be diagnosed with MUT-III?

A: MUT-III SE should be used as the primary scan tool for all Mitsubishi vehicles (except RAIDER). Systems that require MUT-III to diagnose will be greyed-out on the System Select screen. (See EXAMPLE 1 on page 9.)

Q: How will I know which systems to diagnose with MUT-III SE?

A: If MUT-III is connected to a vehicle which requires MUT-III SE, a dialog box appears alerting the technician to switch scan tools. (See EXAMPLE 2 on page 9.) Be certain to select the cancel button in the dialog box, not the check mark. If the check mark is accidentally selected, the computer may lock up requiring MEDIC4 to be restarted.

Q: Am I able to use the MUT-III oscilloscope and multi-meter with MUT-III SE?

A: No. If these tools are needed, use MUT-III and the VCI.

Q: I can't change the numeric MIN and MAX values while using the Data List function in MUT-III SE.

A: This will be corrected in a future enhancement of MUT-III SE.

Q: Where is the All DTC check? With MUT-III it was located in Special Function.

A: All DTC check, CAN Bus check, ECU Reprogramming, and Special Function are small icons located below the VIN on the System Select screen in MUT-III SE.

Q: Why did a recent TSB tell me to use MUT-III to reprogram an ECU instead of MUT-III SE?

A: Currently, ECU re-flashes will be performed with MUT-III only.

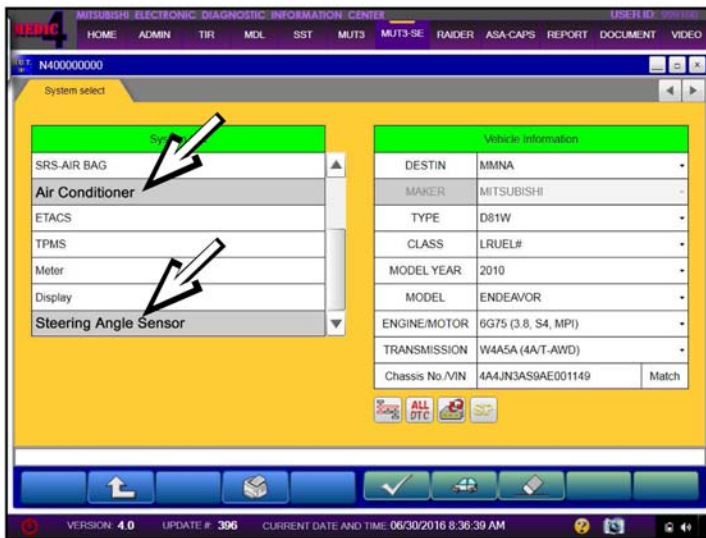
Q: Why is the All DTC icon on the System Select screen sometimes greyed-out?

A: When connected to certain vehicles, MUT-III SE displays the Loading Option Setup menu located beneath the Systems List. If the All DTC icon is greyed-out, not all selections have been completed in the Loading Option Setup menu. Scroll down to ensure all selections are made.

Q: Can I continue to use MUT-III only?

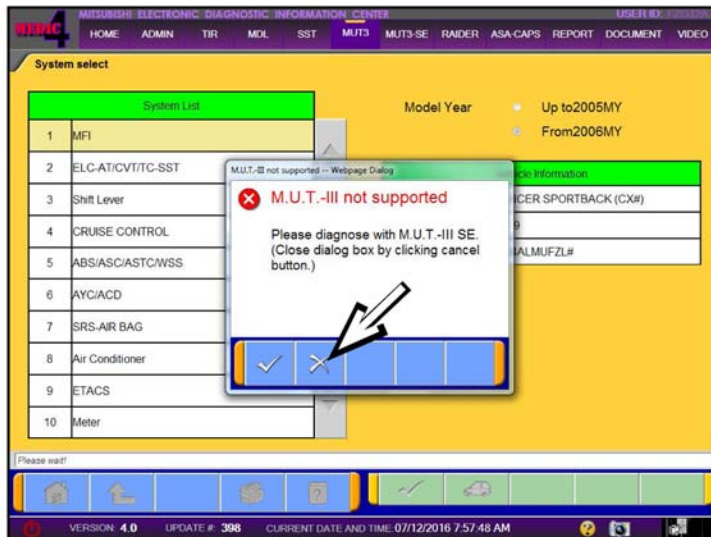
A: No. Late model vehicles will require MUT-III SE.

MUT-III SE and MUT-III Screen Displays



EXAMPLE 1:

In this example, MUT-III SE is connected to a 2010 Endeavor. Systems diagnosed with MUT-III (Air Conditioner and Steering Angle Sensor, for example) are greyed-out on the MUT-III SE System List. If diagnosing one of these systems, the technician should close MUT-III SE completely and use MUT-III to continue.



EXAMPLE 2:

If diagnosis requires MUT-III SE but MUT-III is used instead, a dialog box alerts the technician to exit MUT-III completely and use MUT-III SE.

Touch the X (cancel button) to clear the dialog box.

NOTE: MUT-III SE, MUT-III, and RAIDER cannot run at the same time. Technicians must fully exit one scan tool before starting another.

Loading Option Setup

Due to an ETACS supplier change, technicians must confirm they can see the **ETACS P/N** laser etched on the **ETACS assembly** when completing the Loading Option Setup menu for the following vehicles. See pages 10-13 for details.

- 2008-2017 Lancer
- 2009-2015 Lancer Evolution
- 2007-2013 Outlander
- 2009-2017 Lancer Sportback (Canada only)
- 2011-2017 Outlander Sport/RVR
- 2014-2016 Outlander

This applies to replacement ETACS assemblies as well as original equipment parts.

LOCAL INTERCONNECT NETWORK (LIN) DIAGNOSIS

DIAGNOSIS FUNCTION

HOW TO READ DIAGNOSIS CODE

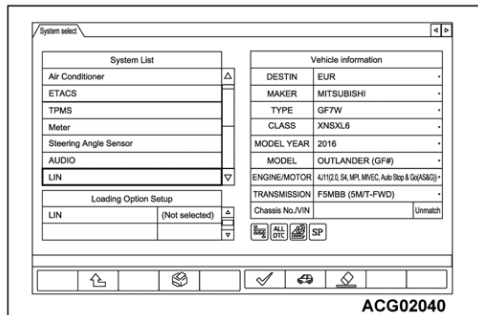
Refer to GROUP 00 – How to use troubleshooting/Inspection service point – Diagnosis function .

HOW TO ERASE DIAGNOSIS CODE

Refer to GROUP 00 – How to use troubleshooting/inspection service points – Diagnosis function .

Precautions on system select screen

Before using the diagnosis function for LIN, observe the steps below on "System Select" screen:

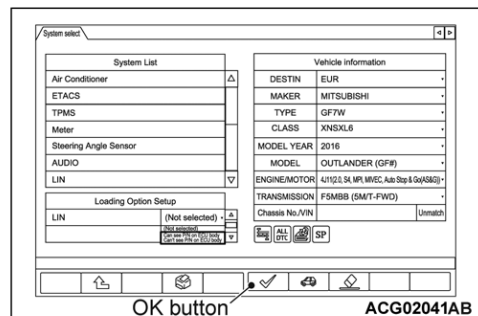
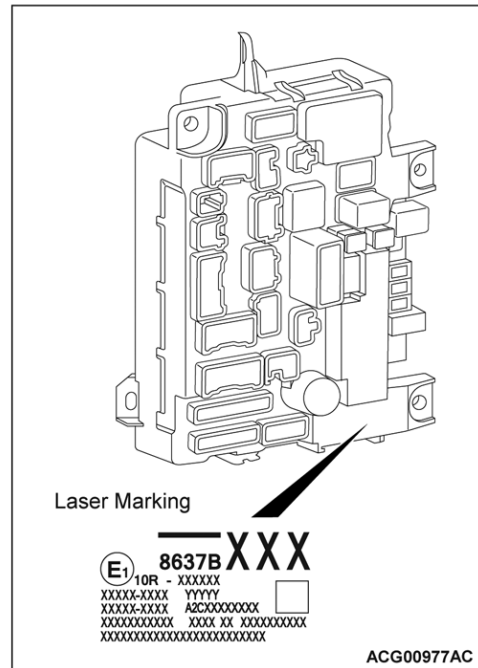


1. Select "LIN."

CAUTION

When you select a wrong item, you cannot obtain a proper result.

A part number (laser marking) must be visible in the area shown on the ETACS-ECU.



- When you activate "LIN" in "Loading Option Setup", you can select "Can see P/N on ECU body" or "Can't see P/N on ECU body." If the laser marking is visible, select "Can see P/N on ECU body." If not, select "Can't see P/N on ECU body."
- Confirm with the OK button to proceed to a diagnosis function screen.

TIRE PRESSURE MONITORING SYSTEM (TPMS) DIAGNOSIS

DIAGNOSIS FUNCTION

M1311002600179

HOW TO READ DIAGNOSIS CODE

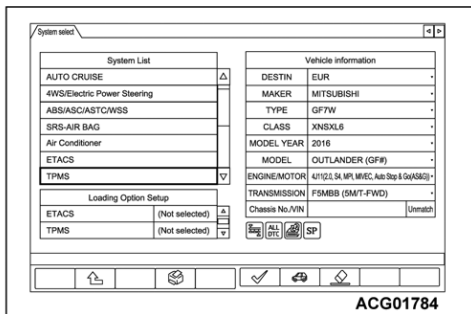
Refer to GROUP 00 – Diagnosis function .

HOW TO ERASE DIAGNOSIS CODE

Refer to GROUP 00 – Diagnosis function .

Precautions on system select screen

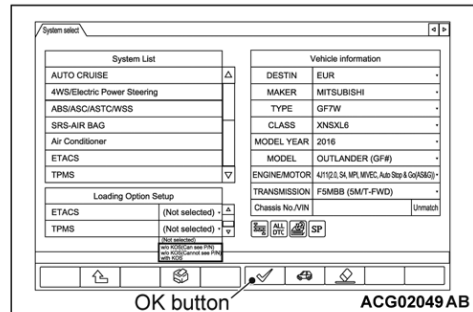
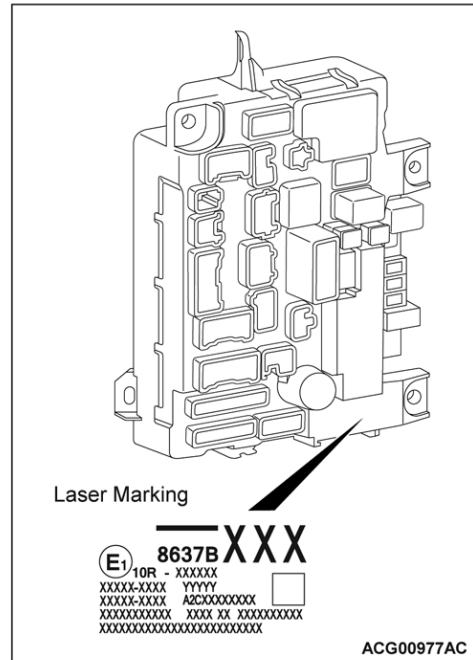
Before using the diagnosis function for TPMS, observe the steps below on "System Select" screen:



1. Select "TPMS."

CAUTION

When you select a wrong item, you cannot obtain a proper result. A part number (laser marking) must be visible in the area shown on the ETACS-ECU.



2. When you activate "TPMS" in "Loading Option Setup", you can select "w/o KOS (Can see P/N)" or "w/o KOS (Cannot see P/N)." If the laser marking is visible, select "w/o KOS (Can see P/N)." If not, select "w/o KOS (Cannot see P/N)."
3. Confirm with the OK button to proceed to a diagnosis function screen.

KEYLESS ENTRY SYSTEM <Vehicles without keyless operation system>

DIAGNOSIS FUNCTION

HOW TO READ DIAGNOSIS CODE

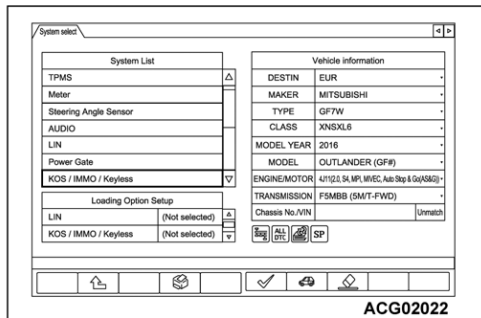
Refer to GROUP 00 – How to use troubleshooting/Inspection service point –Diagnosis function .

HOW TO ERASE DIAGNOSIS CODE

Refer to GROUP 00 – How to use troubleshooting/inspection service points – Diagnosis function .

Precautions on system select screen

Before using the diagnosis function for the keyless entry system, observe the steps below on "System Select" screen:

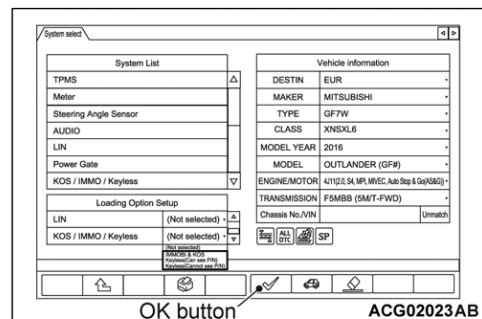
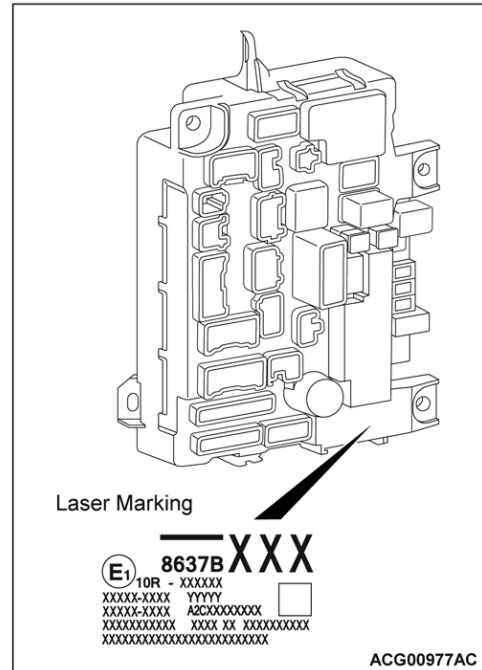


1. Select "KOS/IMMO/Keyless."

CAUTION

When you select a wrong item, you cannot obtain a proper result.

A part number (laser marking) must be visible in the area shown on the ETACS-ECU.



2. When you activate "KOS/IMMO/Keyless" in "Loading Option Setup", you can select "Keyless (Can see P/N)" or "Keyless (Cannot see P/N)." If the laser marking is visible, select "Keyless (Can see P/N)." If not, select "Keyless (Cannot see P/N)."
3. Confirm with the OK button to proceed to a diagnosis function screen.

IMMOBILIZER SYSTEM <Vehicles without KOS>

DIAGNOSIS FUNCTION

M1541100500277

HOW TO READ DIAGNOSIS CODE

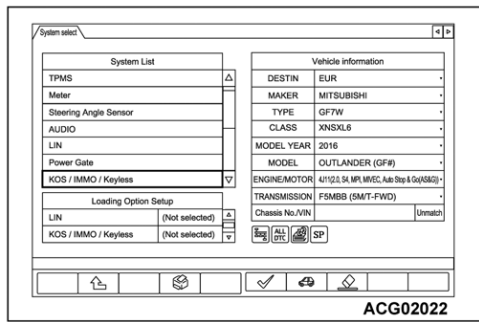
Refer to GROUP 00 – How to use troubleshooting/Inspection service point –Diagnosis function .

HOW TO ERASE DIAGNOSIS CODE

Refer to GROUP 00 – How to use troubleshooting/inspection service points – Diagnosis function .

Precautions on system select screen

Before using the diagnosis function for the immobilizer system, observe the steps below on "System Select" screen:

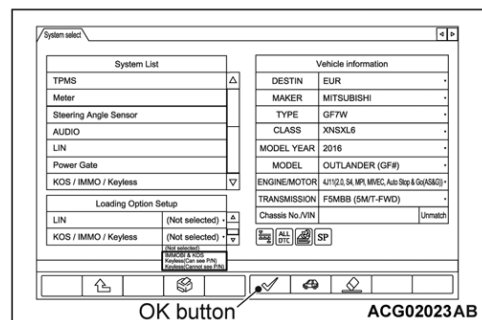
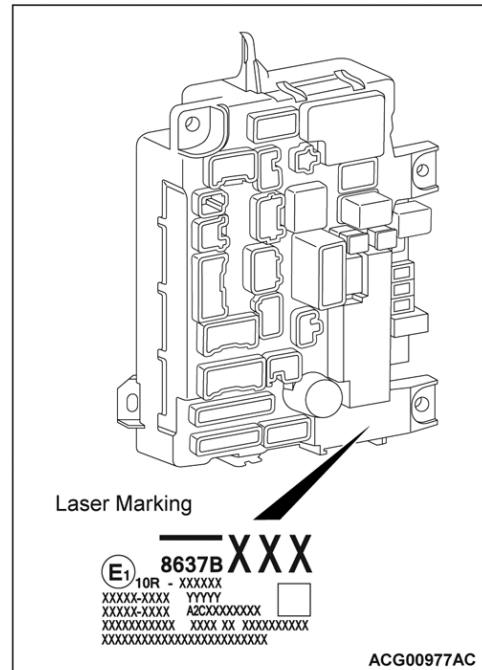


1. Select "KOS/IMMO/Keyless."

CAUTION

When you select a wrong item, you cannot obtain a proper result.

A part number (laser marking) must be visible in the area shown on the ETACS-ECU.



- When you activate "KOS/IMMO/Keyless" in "Loading Option Setup", you can select "Keyless (Can see P/N)" or "Keyless (Cannot see P/N)." If the laser marking is visible, select "Keyless (Can see P/N)." If not, select "Keyless (Cannot see P/N)."
- Confirm with the OK button to proceed to a diagnosis function screen.



Training News



Technical Training Schedule August 2016 – September 2016

Always check MDL for schedule updates. Since Mobile Training does not appear on the calendars below, contact your District Parts & Service Manager for information about Mobile Training in your area.

EASTERN ZONE

New Jersey Technical Training Center

August					September				
M	T	W	Th	F	M	T	W	Th	F
1	2	3	4	5	29	30	31	1	2
		MFIT2							
8	9	10	11	12	5	6	7	8	9
		AT2		AT3				ABS2	
15	16	17	18	19	12	13	14	15	16
22	23	24	25	26	19	20	21	22	23
	CVTT					EN1			ASCF
29	30	31	1	2	26	27	28	29	30

Atlanta Technical Training Center

August					September				
M	T	W	Th	F	M	T	W	Th	F
1	2	3	4	5	29	30	31	1	2
8	9	10	11	12	5	6	7	8	9
		MFIT2					EN1		
15	16	17	18	19	12	13	14	15	16
		AT2		AT3			MED4	STV4	CVTT
22	23	24	25	26	19	20	21	22	23
	ABS2		ES3			AED			ASCF
29	30	31	1	2	26	27	28	29	30

WESTERN ZONE

Dallas Technical Training Center

August					September				
M	T	W	Th	F	M	T	W	Th	F
1	2	3	4	5	29	30	31	1	2
	CC1		TC-SST				ABS2		
	MTT2			ASCF			AT2		AT3
8	9	10	11	12	5	6	7	8	9
					H		EN1		
15	16	17	18	19	12	13	14	15	16
STV4	MED4	ES2					AED		
		MFIT2							
22	23	24	25	26	19	20	21	22	23
MEVTT		ES3				CVTT		TC-SST	
29	30	31	1	2	26	27	28	29	30
		ABS2		AT3		STV4	MED4	MEVTT	
		AT2							

California Technical Training Center

August					September				
M	T	W	Th	F	M	T	W	Th	F
1	2	3	4	5	29	30	31	1	2
8	9	10	11	12	5	6	7	8	9
	ES3		ASCF		H				
15	16	17	18	19	12	13	14	15	16
							MFIT2		
22	23	24	25	26	19	20	21	22	23
29	30	31	1	2	26	27	28	29	30

Days	Code	Prerequisites	Days	Code	Prerequisites
Automatic Transaxles			Manual Transaxles		
40/50 Series Diagnosis & Repair	3	AT2T ATFT1 or ATFWE or ATFB	Manual Transaxles, Transfer Cases, Diff Control	3	MTT2 MTFW, ES1W, ME3W, MED4, STV4
50 Series 5-speed Diagnosis & Repair	1	AT3 AT2T	Twin Clutch Sportronic Shift Transmission	2	TC-SST AESP, ES1W, ES2, STV4, ME3W, MED4, ATFWE, MTT2
CVT Diagnosis & Repair	2	CVTT ATFT1 or ATFWE or ATFB	Vehicle Specific		
Brakes			Eclipse Spyder Convertible Top (Top Stack)	1	SP3 No Prerequisites
Antilock Brakes	2	ABS2 ES1W	2014 Outlander Technology	1	141 ES1W, MED4, ME3W, STV4
Electrical Systems			Mitsubishi Electric Vehicle Technician Training	2	MEVTT AESP, ES1W, ES2, STV4, ME3W, MED4, 120
Electrical Systems 2	3	ES2 ES1W	Vehicle Diagnostics		
Electrical Systems 3	2	ES3 ES1W	Advanced Electronic Service Procedures	-	AESP No Prerequisites
Engine Performance			Advanced Safety & Convenience Features	1	ASCF ES1W, ME3W, MED4, STV4
Advanced Emission Diagnosis	3	AED ES1W, STV4, MFIT2	MEDIC4	1	MED4 ME3W
Engine Technology & Diagnosis	3	EN1 No Prerequisites	Scan Tool Viewer 4	1	STV4 No Prerequisites
Multiport Fuel Injection	4	MFIT2 ES1W, STV4			
Heating & A/C Systems					
Climate Control	2	CC1 MACW, ES1W, ME3W, MED4, STV4			

TECHLINE

(800) 446-6064



HOURS OF OPERATION:
Monday — Friday 6:30 am – 3:30 pm
Pacific Time

Techline is closed every THURSDAY
9:30 – 10:30 A.M for a staff meeting.

Bulletin Review



Since Tech Talk 221, the following
bulletins have been released.

2016 Technical Service Bulletins, Safety Recalls, & Service Campaigns

Date Posted	Publication Number	Publication Title	Applicable Models
7/8/2016	TSB-16-22-001	TC-SST Transmission Clutch Assembly Replacement Procedures – Revised	2008–15 Lancer Evolution, 2009–15 Lancer Ralliart, 2009–11 Lancer Sportback Ralliart
7/8/2016	TSB-16-22-002	TC-SST Transmission Gear Noise After Cold Engine Start (2009–2010 Models) – Revised	2009–10 Lancer Evolution, Lancer Ralliart, Lancer Sportback Ralliart
7/8/2016	TSB-16-22-003	TC-SST Transmission & Mechatronic Assembly Diagnosis & Repair – Revised	2008–15 Lancer Evolution, 2009–15 Lancer Ralliart, 2009–11 Lancer Sportback Ralliart
7/14/2016	SR-16-002	Lancer Passenger Side Frontal Air Bag Inflator – Safety Recall Campaign	2006–07 Lancer
7/25/2016	SR-16-005	Transmission Fluid Hose Clamp Not Released – Safety Recall Campaign	2015 Outlander Sport/RVR

TIN/ATIN Review



Since Tech Talk 221, the following
TINs/ ATINs have been released.

2016 Technical Information Notices, Advance Technical Information Notices

Date Posted	Publication Number	Publication Title	Applicable Models
7/14/2016	ATIN-16-SR-002A	Lancer Passenger Side Frontal Air Bag Inflator – Safety Recall Campaign	2006–07 Lancer
7/25/2016	ATIN-16-SR-005A	Transmission Fluid Hose Clamp Not Released – Safety Recall Campaign	2015 Outlander Sport/RVR

