



Innovation that excites

NISSAN BULLETIN

Center Seat Quality Assurance Hold

Reference: PC469
Date: August 17, 2016

Attention: Dealer Principal, Sales, Service & Parts Managers

UPDATE August 17, 2016

The announcement from August 1st, 2016 has been revised to include:

- Repair, parts, and claims information for the previously announced quality hold

Affected Models/Years:	Affected Population:	Dealer Inventory:	SERVICE COMM Activation date:
MY2016 Titan (A61 & A61D)	NA	23	July 14, 2016

***** Detailed Information *****

Nissan is now requesting dealers to replace the front center seat assembly on specific vehicles identified in Service Comm.

***** What Dealers Should Do *****

1. Verify if vehicles currently in dealer inventory are affected by this QA Hold using Service Comm I.D. **PC469.**
2. Please repair any affected vehicles in Dealer Inventory using the attached procedure.
3. Once repaired, dealer should submit a warranty claim and release the vehicle.

***** Release Schedule *****

Parts	• Parts will start to arrive at dealers beginning August 18, 2016.
Repair	• Follow the procedure included in this announcement.

Thank you for your prompt attention to this matter.

NISSAN NORTH AMERICA, INC.
Aftersales DIVISION

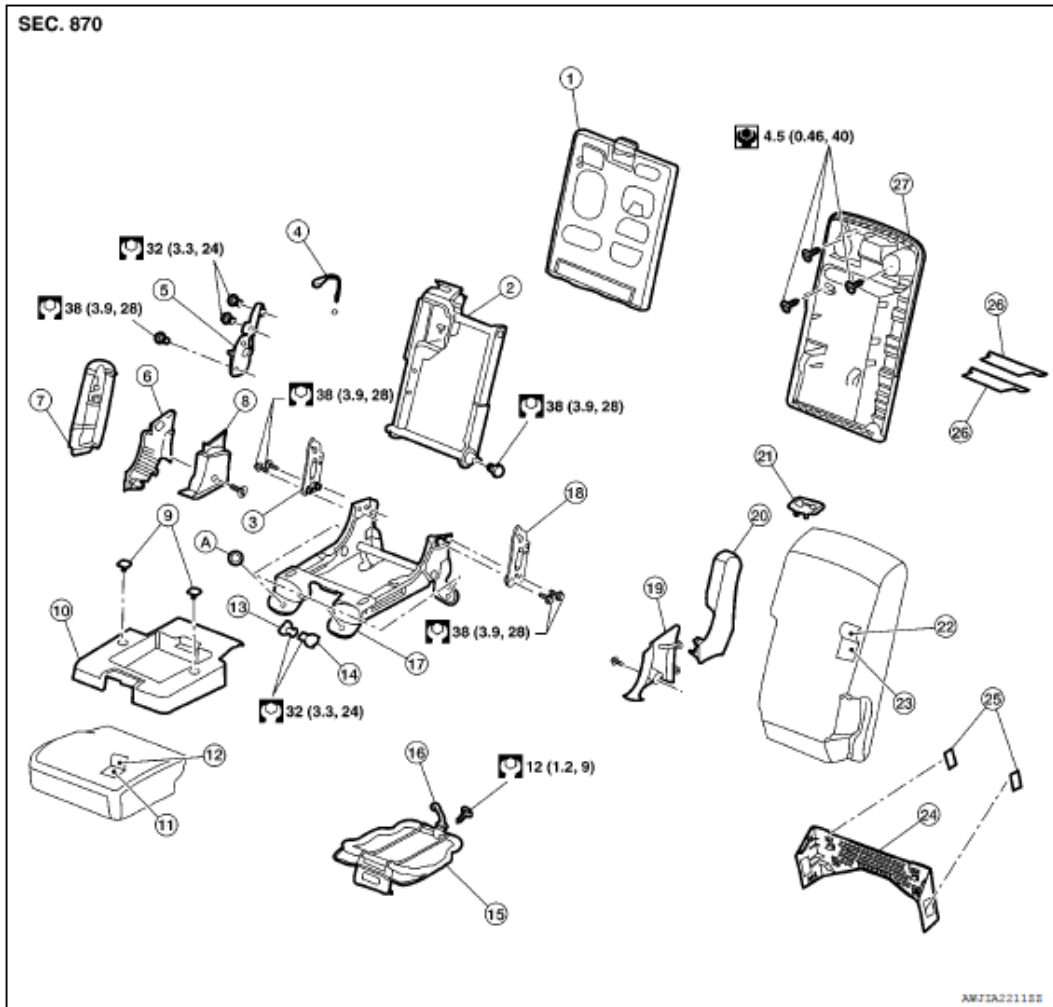


PC469 - 2016 Titan (A61) Center Seat Replacement

FRONT SEAT

< REMOVAL AND INSTALLATION >

Center Seat



- | | | |
|--|--|--|
| 1. Armrest lid | 2. Armrest frame | 3. Armrest pivot arm bracket (RH) |
| 4. Armrest release strap | 5. Armrest pivot arm | 6. Armrest outer lower pivot finisher (RH) |
| 7. Armrest outer upper pivot finisher (RH) | 8. Armrest inner lower pivot finisher (RH) | 9. Rubber bumper (LH/RH) |
| 10. Storage bin | 11. Seat cushion pad | 12. Seat cushion trim |
| 13. Storage bin stopper (RH) | 14. Storage bin stopper (LH) | 15. Seat cushion frame |
| 16. Seat cushion strap | 17. Storage bin frame | 18. Armrest pivot arm bracket (LH) |
| 19. Armrest inner pivot finisher (LH) | 20. Armrest outer pivot finisher (LH) | 21. Seat belt guide |
| 22. Armrest trim | 23. Armrest pad | 24. Rear leg finisher |
| 25. Rear leg finisher caps | 26. Drawer divider | 27. Armrest drawer |
| A. Refer to INSTALLATION | | |

Removal and Installation - Center Seat

REMOVAL

CAUTION:

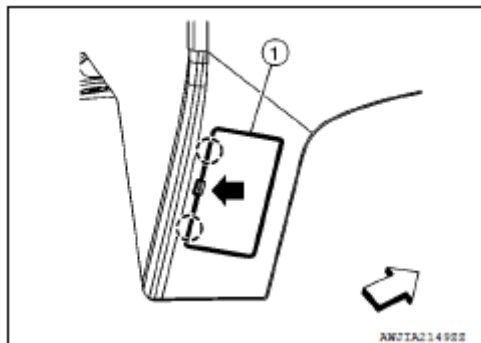
- When removing or installing seat trim, handle it carefully to keep dirt out and to avoid damage.
- Do not drop, tilt, or bump side air bag module while installing seat. Always handle it with care.
- When removing and installing seat, use shop cloths to protect components from damage.

1. Remove center seat front bolts.
2. Slide front seats (LH/RH) to the fully forward position.
3. Using suitable tool where shown (), release pawls, then remove rear leg finisher cap (1).

NOTE:

RH shown, LH similar.

- : Pawl
- ⇐ : Front



4. Remove center seat rear bolts and center seat.

5. Remove the rear leg finisher and install on the new replacement seat.

Rear Leg Finisher



INSTALLATION

Installation is in the reverse order of removal.

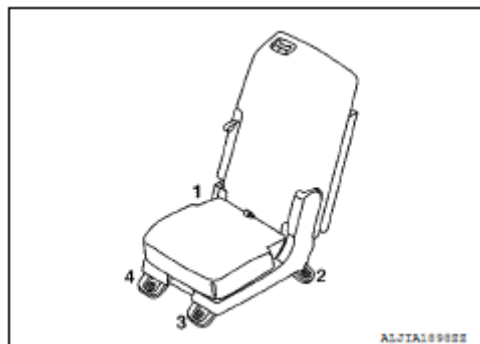
CAUTION:

Make sure that the floor carpet is not damaged during installation.

NOTE:

- When installing center seat, hand-tighten bolt (4), then tighten to specification in the order shown.

Center seat bolt torque : 48 Nm (4.9 kg-m, 35 ft-lb)



PARTS INFORMATION: Only one of the seat part numbers listed below is needed.

Description	Quantity	Part #
SEAT ASSY - VINYL (CHARCOAL)	1	87040-EZ00A
SEAT ASSY - CLOTH (CHARCOAL)	1	87040-EZ10A
SEAT ASSY - CLOTH (BEIGE)	1	87040-EZ10B

CLAIMS INFORMATION

Submit claim using the following claims coding:

Work Order Line Type: "CM" Campaign

Campaign: PC469

Claim Type:	CM			
PNC:	PC469			
Symptom:	ZZ			
Diagnosis:	99			
Description:	Op Codes	Flat Rate Time	Parts Required on claim	Expense Code Required
Replace Center Front Seat Assembly	PC4690	0.3 hrs.	Yes	No