

AIRSTREAM

Service awareness Bulletin

Bulletin number: 168 **Date:** 12/21/2016

Product line: Airstream Base Camp Demo

Subject: Demo Unit Modifications

Attn: Service

Airstream Base Camp Demo Unit Check List



The Base Camps on your lot need to be checked to verify these items are correct. There were several variations of production vehicles released. Please complete this check list and return it to Airstream to verify that the units on your lot are up to production standards. If any of these are not up to date, please use the included instructions to complete. **Use Operation Code TTSBR8356079 for all jobs.**

Unit # _____

AIRSTREAM

Service awareness Bulletin

Bulletin number: 168 **Date:** 12/21/2016

Product line: Airstream Base Camp Demo

Subject: Demo Unit Modifications

Attn: Service

1. Check the first cross member on the A-Frame, does the ground location look like this?

Yes

No



AIRSTREAM

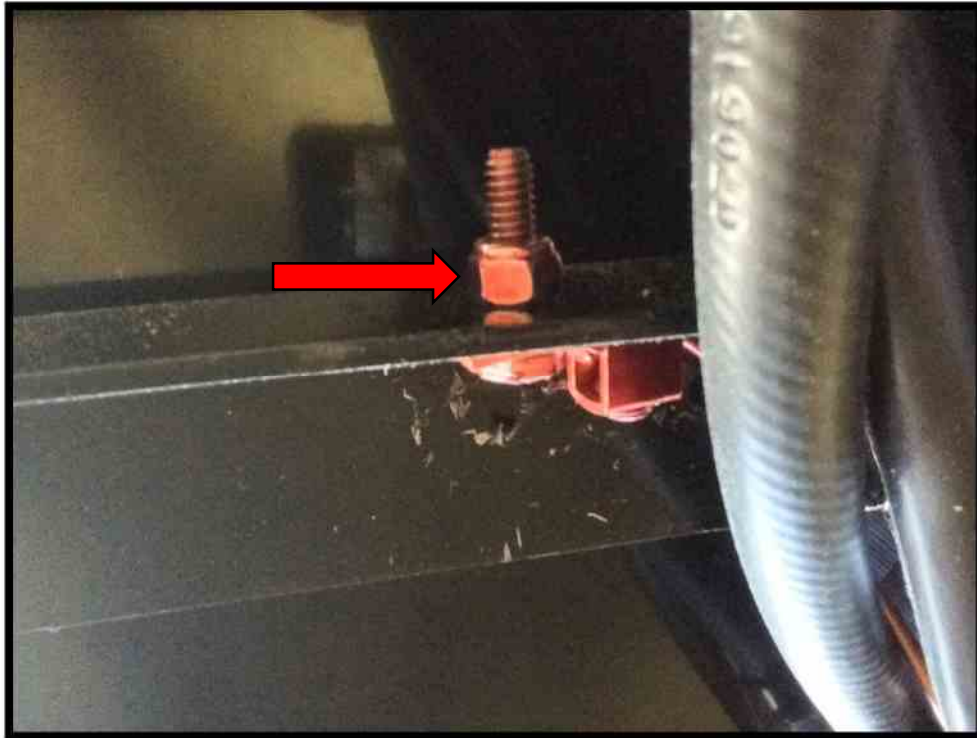
Service awareness Bulletin

Bulletin number: 168 Date: 12/21/2016

Product line: Airstream Base Camp Demo

Subject: Demo Unit Modifications

Attn: Service



If You Answered "No":

The wire may be long enough to reach the cross bar, if it is not, run a new copper wire from the inside ground to a new location on the A-frame. The bolt head and the nut for the ground need to be accessible.

Materials Needed:

6' Copper Wire- Part # 500837

Flat Rate Time to Complete:

.30 to relocate if the wire is long enough

.70 to run new copper wire to ground

AIRSTREAM

Bulletin number: 168 Date: 12/21/2016

Product line: Airstream Base Camp Demo

Subject: Demo Unit Modifications

Attn: Service

Service awareness Bulletin

2. Open the rear door and check the seals. Does it have 3 seals like this?

Yes

No



AIRSTREAM

Bulletin number: 168 Date: 12/21/2016

Product line: Airstream Base Camp Demo

Subject: Demo Unit Modifications

Attn: Service

Service awareness Bulletin

If you answered "No":

- Take off rear door gaskets and install new. Make sure to clean off any residue left by old gaskets.
- First, install the trim lock, putting the seam centered at the bottom of the door. Make sure it is tightly together.
 - Start the D seal at the bottom center of the door. Leave a $\frac{1}{4}$ " gap in the middle.
- Start the main door gasket at the bottom of top hinge and run it around the top of the door jamb. Stop in the same location on the other side.

Materials Needed:



AIRSTREAM

Bulletin number: 168 Date: 12/21/2016

Product line: Airstream Base Camp Demo

Subject: Demo Unit Modifications

Attn: Service

Service awareness Bulletin

Flat Rate Time to Complete: 1.00 Hours

3. While you are at the rear door verify that the latch cup on the lower section of the frame has been installed. Is this latch cup installed?

Yes

No



If You Answered "No":

- Cut hole in area above drain. The new latch cup will need to fit between the bolts.
- Seal around the new latch cup after installed.

Materials Needed:

Latch Cup- Part # **455250**

2- SS Screws- Part # **320111**

Flat Rate Time to Complete: .50 Hours

Operation Code:

AIRSTREAM

Bulletin number: 168 Date: 12/21/2016

Product line: Airstream Base Camp Demo

Subject: Demo Unit Modifications

Attn: Service

Service awareness Bulletin

4. Also on the back door, look at the top of the door jam. Is an eyebrow installed over the door?

Yes

No



If You Answered "No":

- Place the new eyebrow over the door as pictured. Mark the holes.
 - Pre drill your holes with a # 30 bit.
- Place foam tape on the back of the eyebrow.
 - Install eyebrow using SS screws.
- Seal over top of eyebrow with Acryl-R.

Materials Needed:

5'- Foam Tape- Pat # **365334**

Eye brow- Part # **115869**

AIRSTREAM

Bulletin number: 168 Date: 12/21/2016

Product line: Airstream Base Camp Demo

Subject: Demo Unit Modifications

Attn: Service

Service awareness Bulletin

12- SS Screws- Part # **320111**

Flat Rate Time to Complete: .50 Hours

5. Look at the latches on the LP tank cover. Are they installed with a screw, like this?

Yes

No



If You Answered "No":

- Undo latch, lift up lid. Drill out rivets on lower latch pictured above.
- Re-install lower latches with nuts and bolts

AIRSTREAM

Bulletin number: 168 **Date:** 12/21/2016

Product line: Airstream Base Camp Demo

Subject: Demo Unit Modifications

Attn: Service

Service awareness Bulletin

- Place new metal strip behind where the lower LP cover hinge attaches (see picture below), clamp in place (you can use putty tape on the metal strip as well). Using the hinge as a template, drill through the metal plate. Rivet hinge and metal plate into place.



Materials Needed:

4- Bolts- Part # **350022**

4 -Nuts- Part # **682401**

Metal Plate- Part # **115867**

10- Rivets- Part # **682632**

Flat Rate Time to Complete: .60 Hours

AIRSTREAM

Bulletin number: 168 Date: 12/21/2016

Product line: Airstream Base Camp Demo

Subject: Demo Unit Modifications

Attn: Service

Service awareness Bulletin

6. Open the shower door. Does it have the new style of seal like the one pictured on the right?

Yes

No

Old Style

New Style



If you answered "no":

- Remove existing gasket from the door jamb. Clean off any residue left from old gasket.
 - Scuff edge of interior door frame.
 - Install new, larger D-Seal gasket.

Materials Needed:

16'- D-Seal- Part # **381665**

Flat Rate Time to Complete: .50 Hours

Operation Code:

AIRSTREAM

Bulletin number: 168 **Date:** 12/21/2016

Product line: Airstream Base Camp Demo

Subject: Demo Unit Modifications

Attn: Service

Service awareness Bulletin

7. Close the shower door with the SEA latches on the top and bottom corners from the inside and the outside. Do the latches close the door snugly?

Yes

No



If You Answered "No":

- Remove outside part of SEA latch, there should be a screw under the head of the latch
- Remove the screw and pull out the latch.
- Trim the spacer on the latch to about ¼"
- Re-install the latch

Flat Rate Time to Complete: 0.30 Hours

AIRSTREAM

Bulletin number: 168 Date: 12/21/2016

Product line: Airstream Base Camp Demo

Subject: Demo Unit Modifications

Attn: Service

Service awareness Bulletin

8. Open the side windows and look at the screens. Do the screens look like this, with a finished edge?

Yes

No



If You Answered "No":

- Open the window

- From outside the unit, apply 1" Bias tape with emblem tape as adhesive to edge of screen

Materials Needed:

4'- 1" Bias Tape- Part # **704360**

4'- Emblem Tape- Part # **365215**

Flat Rate Time to Complete: .50 hours